



# Anark Core MBEWeb

GE Gas Power

Nov 11, 2020

# History

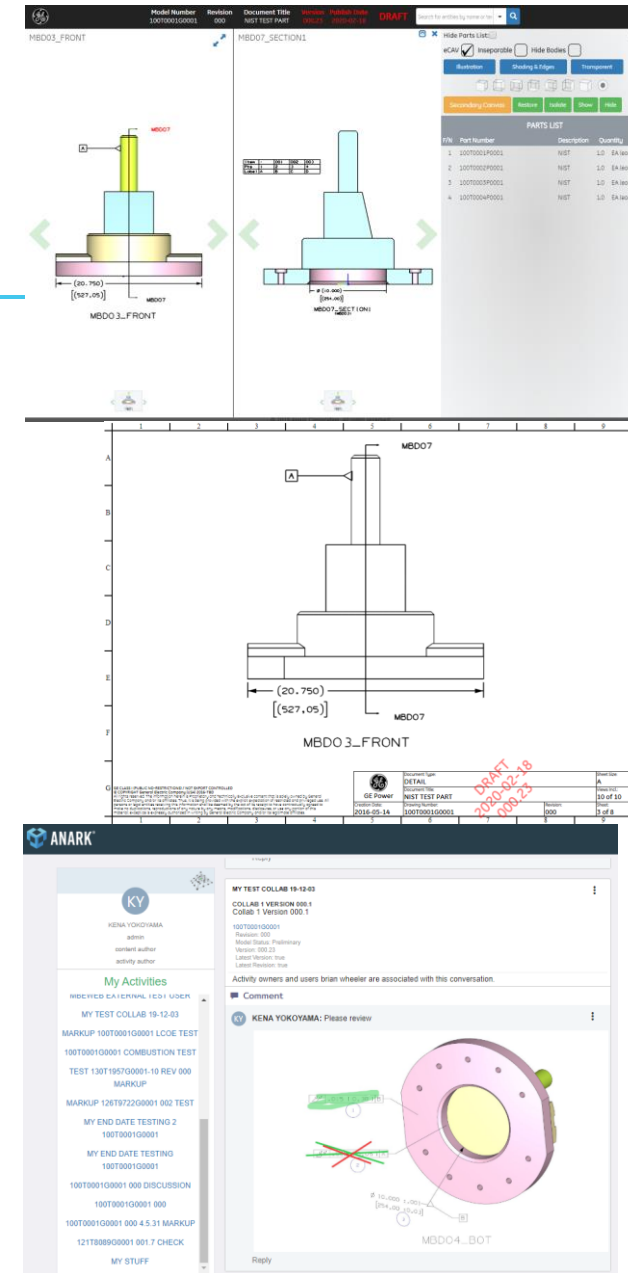
<b>Date</b>	<b>Author</b>	<b>Description of Changes</b>	<b>Revision</b>
1/17/20	Kena Yokoyama	Initial Release	1.0
2/26/20	Kena Yokoyama	Updated Why Anark Core MBEWeb slide	1.1
5/28/20	Kena Yokoyama	Updated for Production MBEWeb External	1.2
6/22/20	Kena Yokoyama	Updated for posting to external Supplier website	1.3
11/11/20	Kena Yokoyama	Updated through Nov '20 PLM & Anark releases	1.4



# Why Anark Core MBEWeb?

## 3D-PDF to Anark Core MBEWeb

Feedback	3D-PDF Status	Anark Core MBEWeb Capability
Files too big	3MB-1.2GB download	Preview & navigate w/o full download
Navigation too slow	Slower the bigger the file	10x+ faster, 2D option
Can't search	Not in our template	By PMI type, text, point name, eCAV Balloon #, Rev Triangle
Can't open on my device	Computers need Adobe Reader XI	Viewable on business computer, tablet, smartphone
Difficult to navigate	1 view at a time	Side by side w/ hyperlinks, thumbnails, search
Too much paper	1 view per sheet	Flexible # of views/order, MBD Layout
Printing too slow	1 page at a time	Printing now from saved 2D images
Markups impossible	Tedious	Collaborative, searchable, 2D option
New functionality	Need to republish	New functionality quickly applied to content w/o the need to republish
Support documents	Posted on Box	Linked in content and collaboration



# Allowed Data

---

- **GE Internal Users** and **External Supply Chain Users**.
- **Class II Non-Export Controlled** content only. Restricted Class II such as PSM and Class III **are allowed**. Class IV and Export Controlled **are not allowed** in Anark Core MBEWeb.  
**Markups, comments and pictures added to Anark Core MBEWeb Collaboration must not include Class IV or Export Controlled information.**
- **PLM/SDX Access and an Active PO, RFQ or SDX folder are required.** Because the content translated into Anark Core MBEWeb is managed by PLM, Anark Core MBEWeb access authenticates in PLM. If you have access to the CAD model and can download the 3DPDF from PLM/SDX, you will have access in Anark Core MBEWeb.



# Accessing Anark Core MBEWeb

## Content link in the PDDR for each Model-Based CAD Model

Part Definition Data Report for - 100T0001G0001 rev 000										Wed Feb 13 16:46:52 EST 2019					
Level	F/N	BOM Prefix	Part Number	Part Rev	Qty	UOM	EID	Document Name	Doc Rev	Description	Type	State	Original / Replacement Part	Part Attributes	MBEWEB External Link
1			100T0001G0001	0		EA (each)				NIST TEST PART	Part	Release			
							CADModel	100T0001G0001	0	NIST TEST PART	UG Model	Release			<a href="https://mbe-ext.gepower.cc">https://mbe-ext.gepower.cc</a>
							COMDOC	348A9200	M	APPLIED PRACTICES GENERAL MACHINING	GE Technical Document	Release			
2	1		100T0001P0001	0	1	EA (each)				NIST	Part	Release			
							CADModel	100T0001P0001	0	NIST	UG Model	Release			
							COMDOC	348A9200	M	APPLIED PRACTICES GENERAL MACHINING	GE Technical Document	Release			
2	2		100T0002P0001	0	1	EA (each)				NIST	Part	Release			
							CADModel	100T0002P0001	0	NIST	UG Model	Release			

- There is a security issue which results in no access errors when you click on the MBEWeb link in Excel. **Please Copy and Paste the URL into your Browser rather than clicking the link.**
- SSOs entered into MBEWeb are case sensitive (PLM login is not case sensitive).
- MBEWeb subscription licenses are available for purchase directly from Anark. Please visit the Anark website for details at: <https://anark.com/landing/ge-suppliers/>

**404 Not Found**

nginx/1.12.2

If the Anark Core MBEWeb link results in an error, contact GE. The PDDR may have out of date links.



# Anark Core MBEWeb Content

- Title block including name, rev, description, date published to Anark Core MBEWeb, classification, export status, copyright.
- ? Link to Help Documentation
- Search to filter to views that contain the searched content
- Quick Print to print to physical printer or 2DPDF
- Thumbnails for quick browsing. Click on a thumbnail to open the 3D interactive view
- Show 2D to navigate with slower connections

The screenshot displays the Anark Core MBEWeb interface. At the top, there is a navigation bar with the Anark logo and a search bar. Below this, a header section contains metadata: Model Number (100T0001G0001), Revision (000), Document Title (NIST TEST PART), Version (000.03), and Publish Date (2020-11-10). The document is marked as 'DRAFT'. A search bar is also present with the text 'Search for entities by name or text'. Below the header, there is a section for 'Creation Date' (2016-05-14), 'Created By' (NIST), 'Approved By', and 'Document Type' (DETAIL). A 'Quick Print' button and an 'Attachments' dropdown are also visible.

The main content area is divided into several sections:

- Legal Notice:** GE CLASS I (PUBLIC NO-RESTRICTIONS) / NOT EXPORT CONTROLLED. © COPYRIGHT General Electric Company (USA) 2016-TBD. All rights reserved. The information herein is Proprietary and Technically Exclusive content that is solely owned by General Electric Company and/or its affiliates.
- Published with Anark Core version 4.5.49.23637**
- Show 2D:** A button to toggle between 2D and 3D views.
- Thumbnail Size:** A dropdown menu set to 'Medium'.
- 3D Model View:** A 3D rendering of a component labeled 'MBD01\_PRIMARY'. Below it is a revision table:

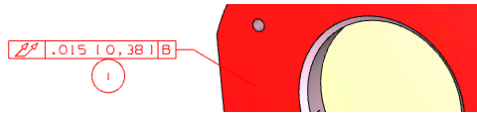
REV	MBD VIEW	DESCRIPTION	DATE (YYYY-MM-DD)	APPROVAL
MBD01	LE (END)		2016-03-17	CHUNMI K. YOKOYAMA
MBD02	11. REVISED			END INSET
	21. ADDED			
	31. DELETED			
- Notes:** A list of seven notes defining the model and material specifications.
  1. THE CAD MODEL IN THIS FILE FULLY DEFINES THE CAD MODEL WITH THE EXCEPTION OF THE FOLLOWING NOTES.
  2. FOR MATERIAL, SEE PDR.
  3. APPROXIMATE WT: 1.5 KG
  4. FOR APPLIED PRACTICES, SEE ITEM APPLIED PRACTICES
  5. THIS DOCUMENT ISSUED IN ACCORDANCE WITH GSEI 114.9-2009C.
  6. UNLESS OTHERWISE SPECIFIED, DIMENSIONS ARE IN MILLIMETERS (MM) AND SURFACE FINISH IS SPIRIT FINISH.  
DIMENSIONS IN PARENTHESIS ARE IN INCHES (IN).  
DIMENSIONS IN SQUARE BRACKETS ARE IN MILLIMETERS (MM).  
DIMENSIONS IN PARENTHESIS ARE IN INCHES (IN).  
DIMENSIONS IN PARENTHESIS ARE IN MILLIMETERS (MM) AND SURFACE FINISH IS SPIRIT FINISH.  
DIMENSIONS IN PARENTHESIS ARE IN INCHES (IN).  
DIMENSIONS IN PARENTHESIS ARE IN MILLIMETERS (MM) AND SURFACE FINISH IS SPIRIT FINISH.
  7. UNLESS OTHERWISE SPECIFIED, DIMENSIONS ARE IN MILLIMETERS (MM) AND SURFACE FINISH IS SPIRIT FINISH.
- Dimensional Table:** A table listing dimensions and their values.

D	VALUE
D	MBD06_1 ISO
C	MBD05_TOP
B	MBD04_BOT
A	MBD03_FRONT
DATUM	MODEL VIEW
- Other Views:** Two additional 2D views of the component, one showing a side view and another showing a top view.

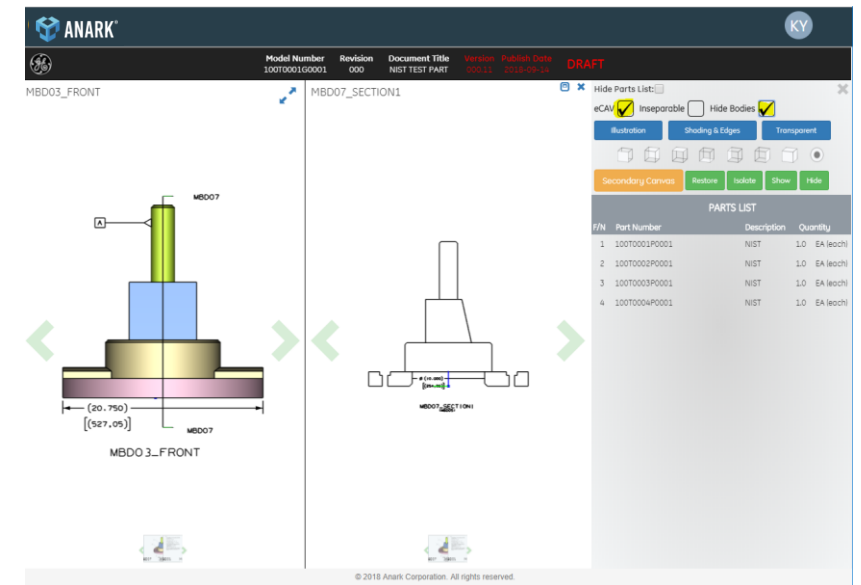
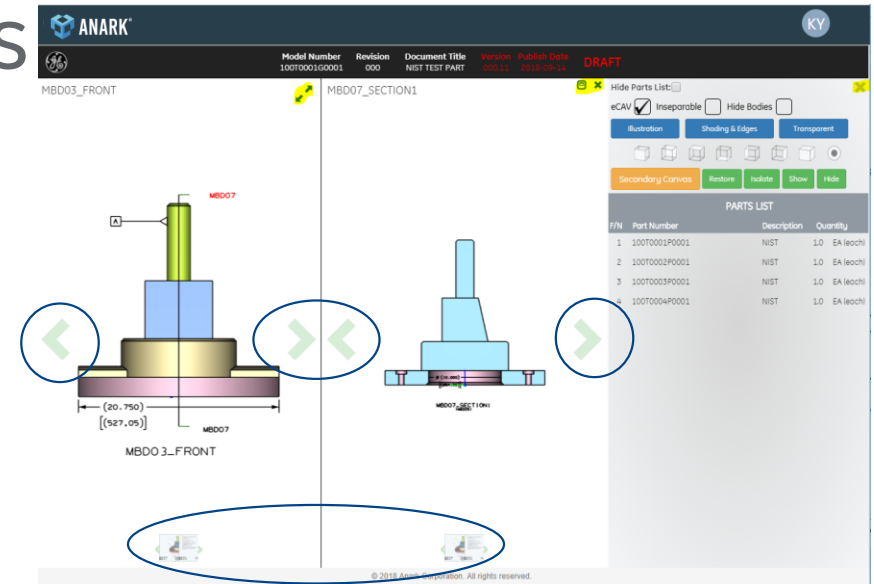


# Anark Core MBEWeb 3D Views

- Arrows, Xs and buttons to navigate, open/close, expand/reduce, show/hide, orient and change display mode for views, bodies, background geometry, eCAV balloons
- X in upper right corner to return to thumbnails
- Secondary Canvas to open side-by-side views
- MBD and See Note Hyperlinks to open related section view, parent view, notes view in secondary canvas
- Select PMI to highlight associated objects just like in 3DPDF. Select eCAV balloons to highlight related PMI and referenced geometry.



- Select from parts list to highlight listed component
- Rotate the view with the right mouse button, zoom in or out with the scroll button and pan by holding down the scroll button.



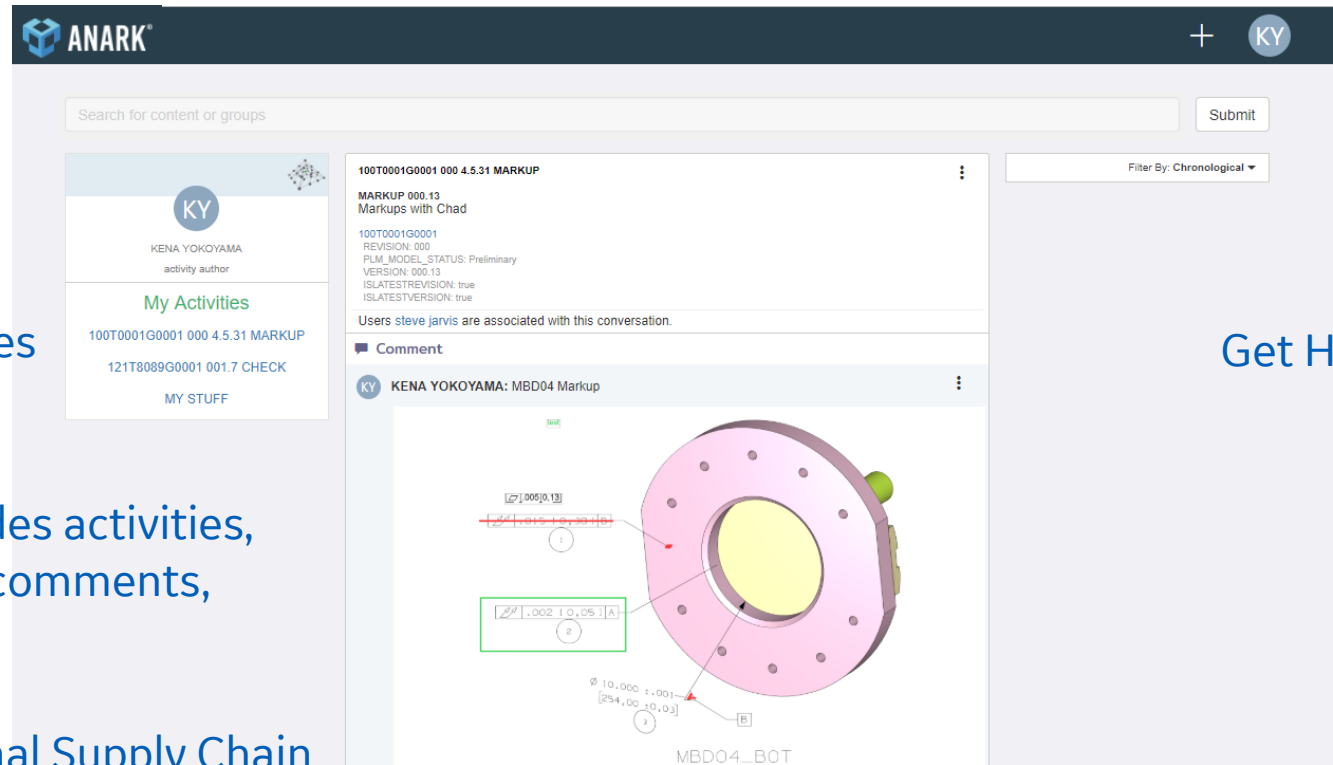
# Anark Core MBEWeb Collaboration

Click on the Anark logo from any page to get to the Anark Core MBEWeb Collaboration Homepage

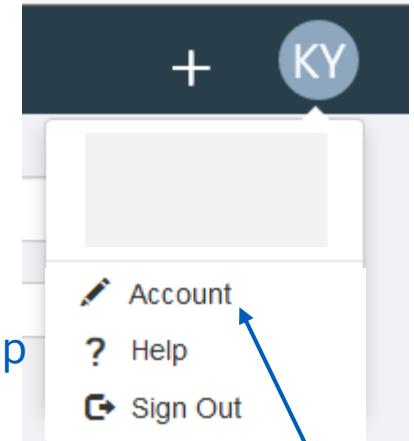
List of Activities

Activity Feed, includes activities, conversations and comments, newest to oldest.

GE will invite External Supply Chain users to collaborate



Get Help



Click Account to turn off or on all collaboration emails

Preferences

Email Notifications:





# Training Video

---

- <https://www.ge.com/power/about/suppliers>

Includes MBEWeb Training video and how get access to PLM/SDX



# Future Updates

---

- Streamlining collaboration workflows and email notifications (2021)
- Integration with new PLM version (2021)
- Measurement capability (2021)



# Please provide feedback

---

- What is working, not working?
- What recommendations do you have?

