



Cross-Fleet Solutions

SGT-800[†]

Unlock the potential of your fleet with industry-proven expertise and technology.

[†]Trademark of Siemens Energy.

www.gepower.com



GE IS YOUR TRUSTED PARTNER

With the capabilities to enhance the performance of your assets, plus commercial solutions to help you protect your investment.

GE Cross-Fleet Solutions is draws on decades of experience to deliver proven, scalable technology to a broader portion of the gas turbine installed base, advancing the performance and availability of other OEM fleets, including the SGT-800[†].

Our comprehensive services portfolio consists of:

- Planning & inspections
- Maintenance & repairs
- Advanced technology upgrades
- Outcome-based service agreements
- Scalable plant-level solutions

CROSS-FLEET SERVICES PORTFOLIO



Turbine Upgrade



Outage Services



Digital Solutions



Multi-Year Agreements

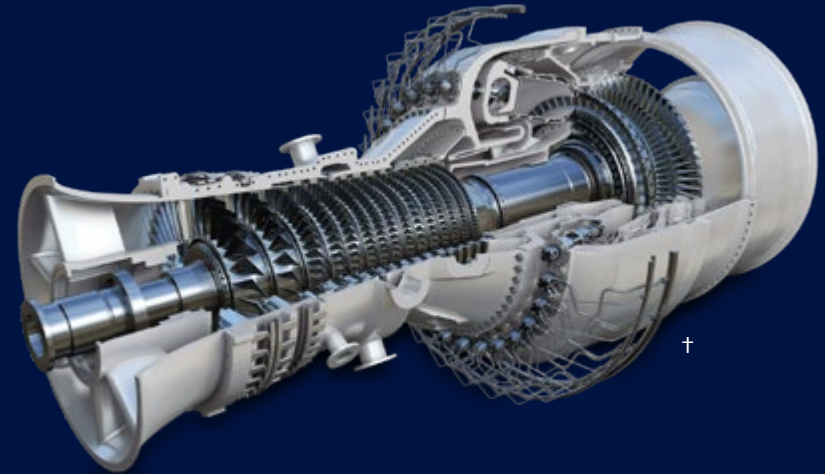


Plant-wide Support

TURBINE HARDWARE UPGRADE

Patented and proprietary GE technologies such as advanced coatings, stronger alloys and enhanced cooling help **extend maintenance intervals** and **increase the performance** of your equipment:

- Maintains best-in-class Reliability
- Additional power production capability
- Increased availability and flexibility in outage timing



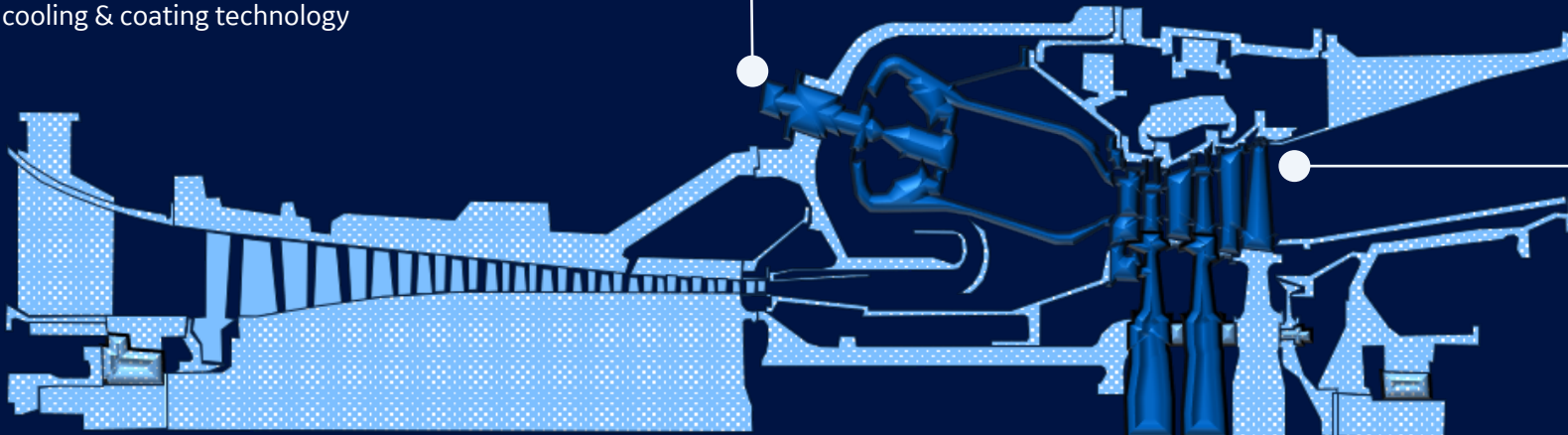
Modular Combustor and Turbine hardware

Combustor Module

- Improved emissions < 15ppm NOx
- Improved part load operation stability down to 40% load
- Extended parts life through use of GE materials, cooling & coating technology

Turbine Module

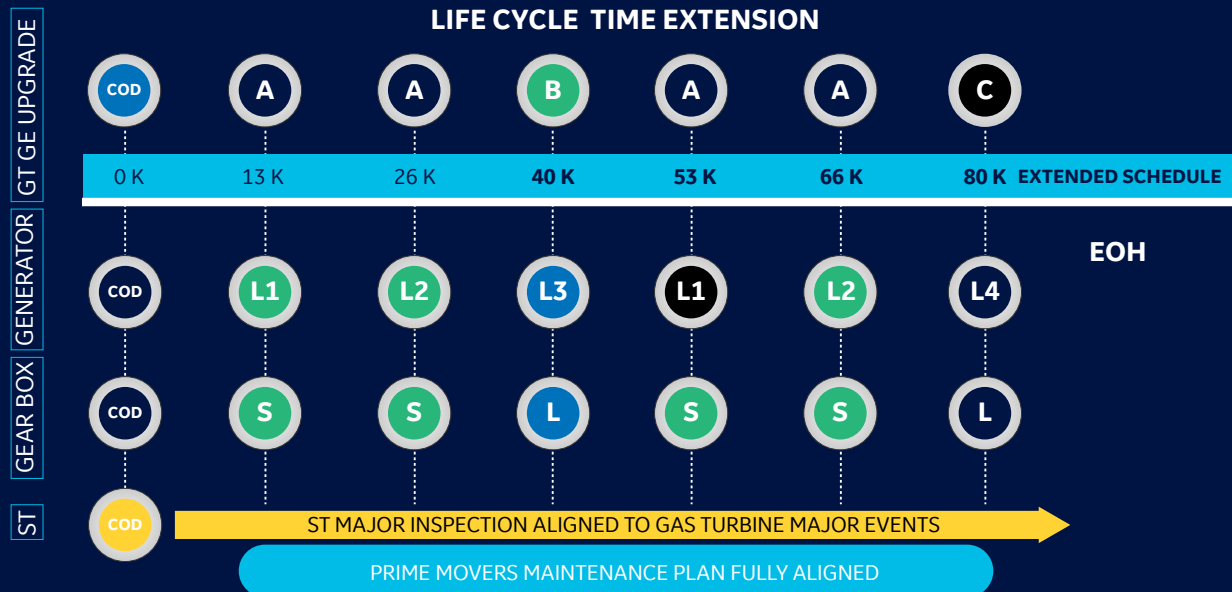
- Proven GE F-class cooling technology
- Multi-tour parts using nickel-based superalloys
- Extended parts life through use of thermal barrier coatings (TBC) and aluminide
- Improved sealing for performance improvement



GE Maintenance Alignment Plan

Improve availability and lower plant maintenance cost

As part of our long-term service relationship with an owner/operator, we work to align maintenance cycles for prime movers.



OUTAGE SERVICES

Solutions that can improve maintenance cycles and system performance.

- **Long-standing history of outage management** expertise and prioritization of quality and safety
- **Dedicated field service** and service engineering support for SGT-800[†] maintenance and upgrades
- Access to GE's repair network, **ensuring global reach and local presence**
- **Complete work on full range of services** including inspections, new hardware install, and controls integration
- **Experienced field execution teams** performing work using GE standards and protocols for quality and safety

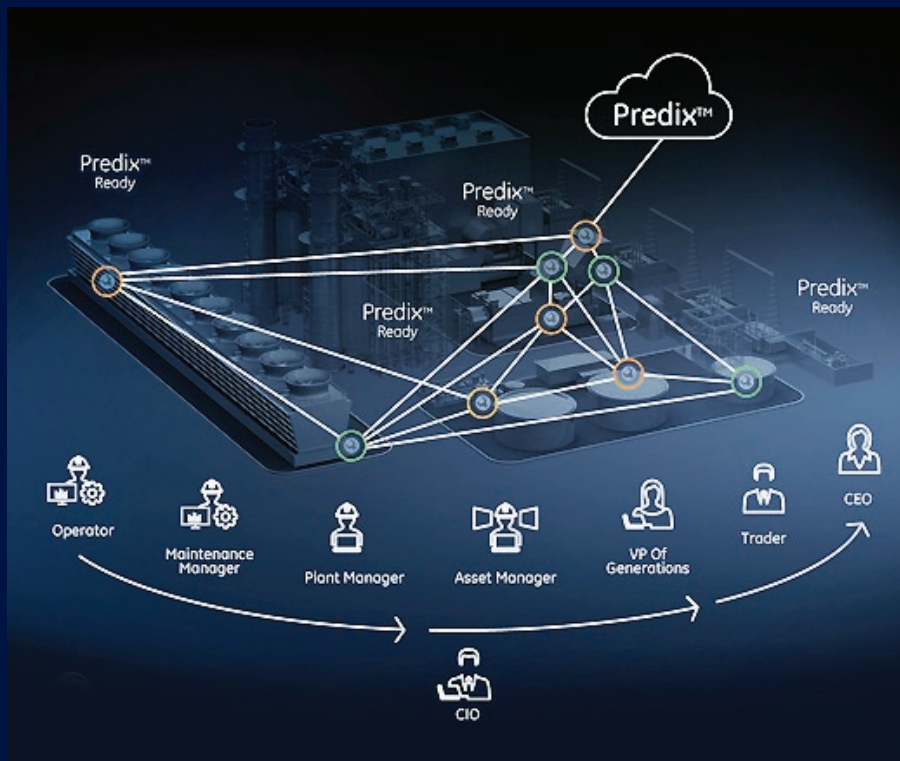


[†]Trademark of Siemens Energy.

DIGITAL SOLUTIONS

Solutions that connect and visualize your power operations

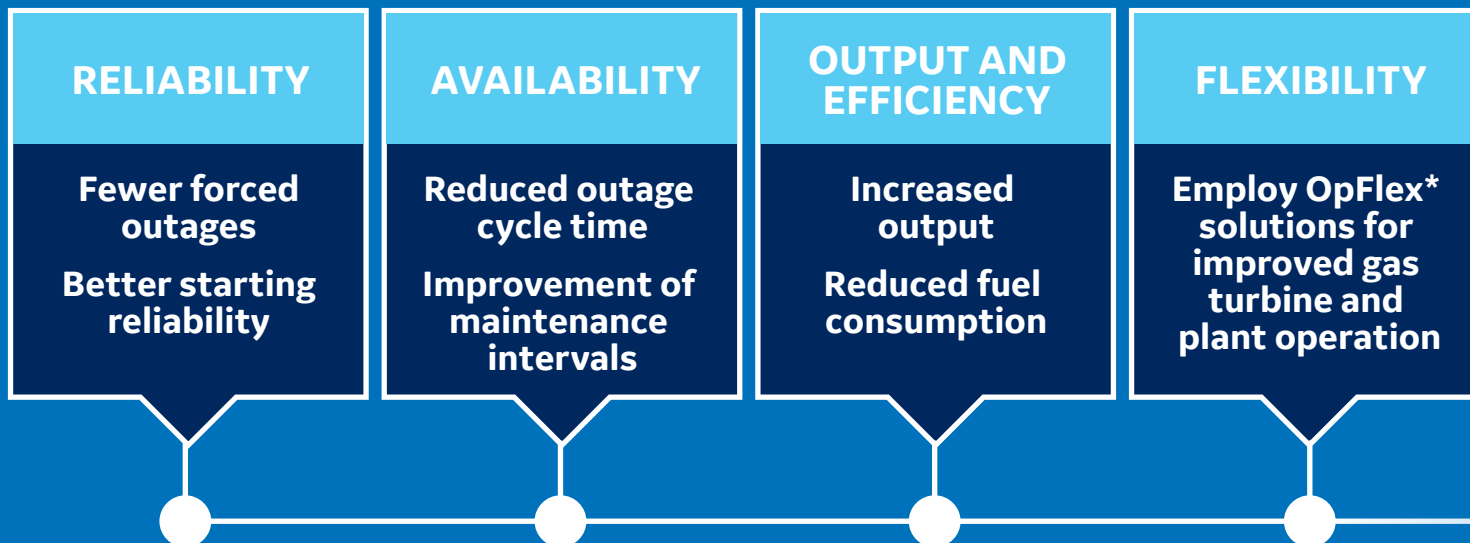
- Employ **advanced predictive analytics** using 24/7 Monitoring and Diagnostics (M&D)
- **Expand plant capability** and **reduce operating costs** leveraging controls and automation solutions
- Access to **operational advisors** providing insights and trade-off information
- Protect your plant against multiple attack vectors with our **Cyber-Security solutions**

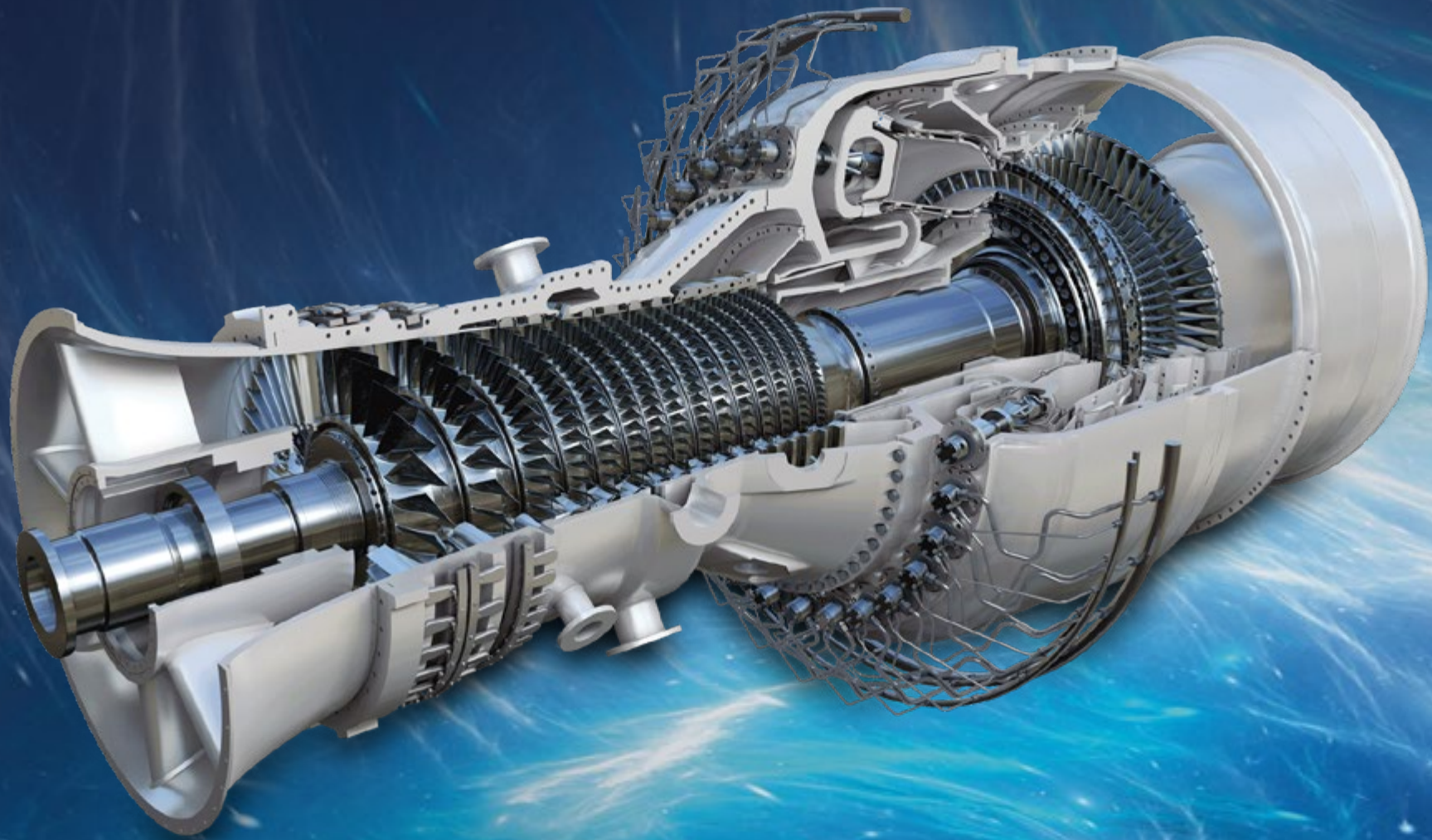


MULTI-YEAR AGREEMENTS

Guarantee outcomes and deliver profitable growth, while managing risk

- Flexible service agreements to meet changing operational and business needs
- Deliver customer value over the long term throughout asset life cycles
- Maintain total plant needs by incorporating extensive solutions to increase performance





COMPREHENSIVE PLANT COVERAGE AND EXPERTISE

- 230+ years of “plant-as-a-system” expertise
- 90+ OEM brands services
- 120+ million hours of operating data analyzed
- 1 partner to deliver all of your plant solutions

GENERATOR

- Both Generator makes supported
- Condition assessment package to reduce outage periods by up to 40%

GEARBOX

- Complete coverage of parts and services
- Vacuum gearbox upgrade (power loss reduction ~300kW)

DIGITAL SOLUTIONS

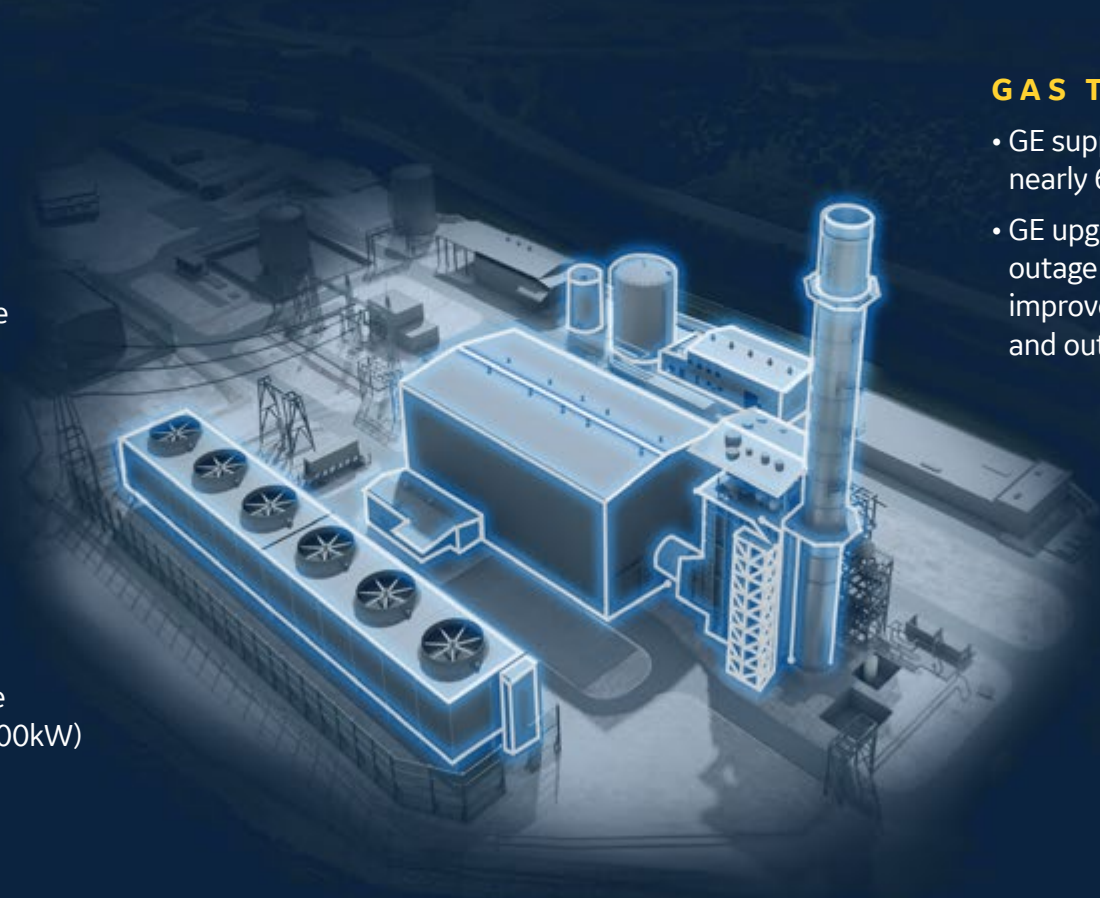
- Customers can harness insights from the analysis of 120+ million hours operating data
- GE has one of the world’s largest fleets of monitored gas plant assets – 3,200+

GAS TURBINE

- GE supports a global fleet of nearly 6,000 gas turbines
- GE upgrade for SGT-800[†] extends outage intervals up to 40 kEOH, improved heat rate of up to -3.4% and output up to +12%

GAS ACCESSORIES

- Coverage of all components
- Upgrade for specific components (VIGV)



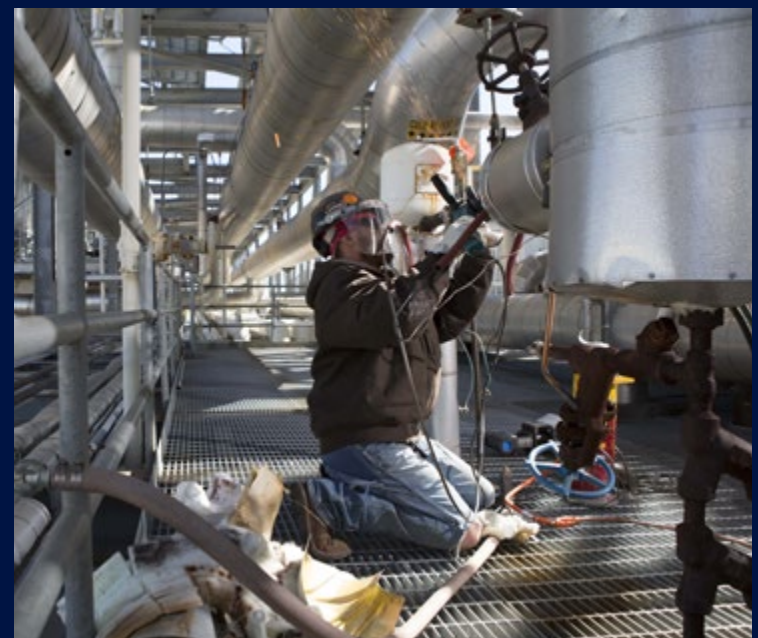
[†]Trademark of Siemens Energy.

INNOVATION THAT COMES WITH YEARS OF EXPERIENCE...

GE engineers are constantly working on technologies that solve customer needs in an ever-changing world.

Adapting proven F-class technology to cross-fleet turbines will allow customers to upgrade their entire fleet with patented solutions that deliver improvements in flexibility, reliability, availability and performance.

- 230 years of power generation services experience
- Plant solutions for 90+ OEM brands
- 5,500+ engineers globally
- 50+ repair shops in 25 countries
- 3,200+ monitored gas plant assets across numerous OEMs
- 24/7 Monitoring and Diagnostics



To find out more about this offering, contact your
Power Services sales representative or visit www.gepower.com

