



# Advanced Steam Path (ASP) Lite

## *A partial steam path upgrade*



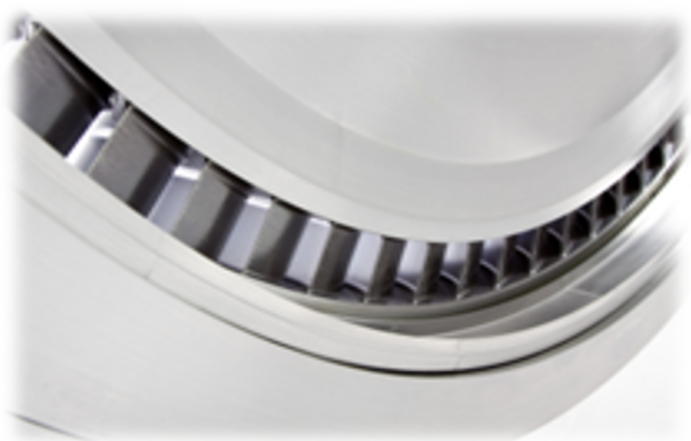
**Availability/Reliability** - addresses multiple TILs relating to diaphragm dishing and N2 packing head cracking. Up to 20-day reduction in outage duration.



**Output** - up to 0.9% ST output increase



**Efficiency** - up to 0.3% CC heat rate improvement



## Key Features

- New rotating blades for at least the first two stages of the HP & IP sections.
- New singlet diaphragms, if dished more than 0.1 inches
- Refurbished diaphragms, if dished between 0.06 inches – 0.1 inches
- Modern seals with improved clearances
- New N2 packing head

The ASP “Lite” upgrade addresses multiple TILs with a solution that includes improved materials, blade profiles, and advanced sealing for improved thermal efficiency. The new steam path provides improved reliability, availability, thermal efficiency for increased MW output, and reduced plant heat rate.



## Key Benefits

- Improves reliability for units without rotor bow
- Output & heat rate improvement
- Reduced outage duration
- Accommodates GT uprate with minor tuning of HP/IP swallowing capacity
- Lower cost option vs. full ASP

## Proven Technologies

Pre-engineered solutions available for D10 & D11 steam turbines operating at 50 Hz and 60 Hz.

Eight services applications of partial steam path upgrades with new or refurbished diaphragms installed since 2017.

To learn more about this offering, contact your GE sales representative or visit [powergen.gepower.com](http://powergen.gepower.com).

Information contained in this document is indicative. No representation or warranty is given or should be relied on. Information provided is subject to change without notice.

© 2019 General Electric Company. All rights reserved.

GEA34284 (05/2019)