



GE VERNOVA

HITACHI

FACT SHEET

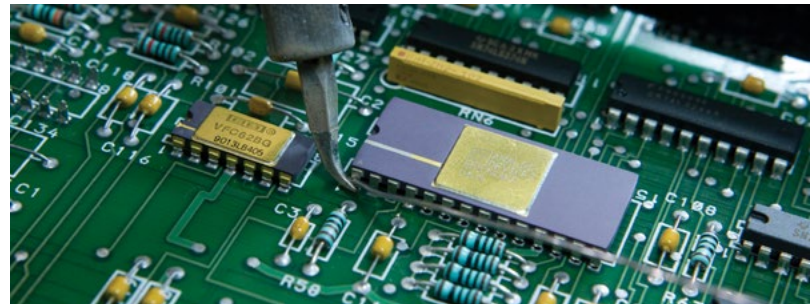
# ELECTRONICS REPAIR SERVICES

GE Vernova Hitachi Nuclear Energy (GVH) supports all the utilities with BWR – GVH design by offering a Refurbishment Service under the GVH – Parts Electronics product line. This service is being enhanced with a new option for the customer.

Traditionally, Refurbishment Service orders enable the customer to learn what is wrong with a part via a diagnostic test/evaluation done by GVH and then to elect to have the part fully refurbished and tested to the latest GVH drawing revisions. Refurbishment costs are usually 60-75% of a new part price. Based on feedback from utilities, customers simply want their electronic parts repaired and returned as quickly and cost effectively as possible.

Now, a new Repair Only service option has been introduced to permit a more efficient repair process for the customer. Under this new option, GVH still performs the diagnostic test/evaluation, but then replaces ONLY the components that are defective. Full refurbishment is not required. The card is repaired, tested, and then returned to the customer at the “as-received” drawing revisions.

During the quoting phase, GVH will identify the part as either a simple “S” or complex “C” electronic card. The initial customer PO will be issued with a “not to exceed” price. Once the repair is complete, GVH provides the customer the final repair price and requests a change order prior to shipment. Repair pricing under the new model will be 15-35% of a new build price. The Repair Only service is not available for a chassis.



## Reduced Risk

Because GVH is the OEM of the BWR design, GVH is in the best position to guarantee that a repair meets all intended specifications and design characteristics, unlike 3rd party repair operations. In addition to meeting the original design bases, GVH can provide a level of service that few, if any, 3rd party service providers can match, let alone beat.

## Key Benefits

- Less expensive than refurbishing same part
- Reduced lead-time (6-8 weeks)
- Repaired parts are tested to the highest standards and latest test procedures commonly used in the industry
- Repaired parts have the same extended warranty coverage as refurbished and new build parts
- All repairs completed by GVH are to original design basis
- Quality of the service and product are maintained under the new process.

Learn more at [governova.com/nuclear](https://governova.com/nuclear)

