

## Additional References Available

### Electrical Utility Reference Guide

(Publication No. CS00A42014)

Includes 600 V - 34.5 kV  
*Indoor* & *Outdoor* CT's & VT's

### FT & RT Test Switches & Plugs

(Publication No. CS00A42015)

## Transformer Selection Information

To select the proper transformer for each application, considerable information concerning the conditions under which the transformer is to be used must be made available to the person selecting the transformer. This is particularly true in those cases where special transformers for unusual applications are required. Often an ITI Application Engineer, familiar with instrument transformers, can suggest relatively slight changes in the conditions of application that will make possible the use of a standard transformer for special requirements provided he is given complete information. For these reasons, it is suggested that complete information accompany every request for selection of instrument transformers for a particular application.

The following information is typically required:

***System Voltage***  
***Type of Circuit (Grounding Conditions)***  
***Ratio***  
***Frequency***  
***Indoor or Outdoor***  
***Burden Values***  
***Accuracy Requirements***  
***Minimum Window Size***  
***Maximum Overall Dimensions***

For prices, assistance in selection, and availability, please contact your nearest GE/ITI Representative or visit [www.GEGridSolutions.com/iti](http://www.GEGridSolutions.com/iti)

# INDEX

Primary Current	Window Diameter (inches)	Model	Page Number
<b>600 Volt Current Transformers</b>			
50-2000	2.50	180SHT	4
200-4000	4.25	170SHT	4
200-3000	4.00	100	4
200-3000	4.00	110	4
50-2000	1.50-3.75	296-300	6-8
50-4000	2.25-4.62	112-117	8-10
600-4000	6.31	125	10
200-4000	5.75	120	10
200-4000	5.75	130	12
50-5000	5.75	135	12
50-5000	6.50	139	12
200-5000	5.25	203	12
50-5000	5.50	137	14
50-6000	8.13	140	14
50-6000	8.13	141	14
50-6000	6.00	144	16
50-6000	6.00	145	16
2000-10000	10.00	147	16

<b>Low Voltage Switchgear Current Transformers</b>			
100-2500	3.19	352M/352R	18
200-4000	3.05	353M/353R	18
200-4000	3.80	354M/354R	20
400-2000	3.12	197	20
100-3000	3.31	350	20
2400-5000	6.31	360	22
2500-6000	6.41	365	22
250-2000	3.67	3P668	22
1600-4000	2.87 x 6.30	3P669	22
100-4000	3.25 x 4.25	560	22
100-4000	3.25 x 4.25	561	24
2000-4000	4.00 x 5.38	562	24
2000-4000	2.00 x 5.38	563	24
1000-6000	2.00 x 5.25	576	24

<b>Medium Voltage Switchgear Current Transformers (600 V)</b>			
50-6000	7.25	142	26
50-6000	7.31	143	26
200-3500	4.50	306	26
200-3500	4.50	307	28
200-4000	5.75	308	28
200-4000	5.75	309	28
50-5000	7.02	680	30
600-4000	7.02	681MR	30
50-4000	7.02	685	30
600-4000	7.02	686MR	30
50-4000	7.62	682	32
50-4000	7.62	687	32
50-6000	6.50	780	32
600-4000	6.50	781MR	34
50-4000	6.50	785	34
600-4000	6.50	786MR	34

<b>Ground Fault Sensors (600 V)</b>			
50-100	7.31	143	34
50-500	4.28 x 11.28	590	36
50-600	5.00 x 14.00	592	36
50-500	8.06 x 22.06	593	36
50-500	8.06 x 20.06	594	36
2000	3.25 (83mm)	HGF2	36
2000	4.25 (108mm)	HGF3C	37
2000	6.31 (160mm)	HGF5C	36
2000	8.13 (207mm)	HGF8	37

<b>600 Volt Voltage Transformers</b>		
Primary Voltage	Model	Page Number
69.3-600	460	38
69.3-600	460F & FF	38
110-660	460I (IEC Rated 50 Hz)	38
69.3-600	475, F & FF	38
110-660	475I (IEC Rated 50 Hz)	40
69.3-600	450, F & FF	40
110-660	450I (IEC Rated 50 Hz)	40
69.3-600	2VT460	40
69.3-346	3VTN460	42
120-600	3VTL460	42

<b>5kV thru 34.5kV Current Transformers</b>		
Primary Current	Model	Page Number
5-1200	CTWH3-60-T100	42
5-1200	CTWH4-75-T100	44
5-1200	CTWH5-B-110-T200	44
40-1200	CTWH5-S-110	44
10-600	CTW6-125-T100/200	46
800-3000	CTWH6-125-T200	46
10-600	CTW7-150-T100/200	46
800-3000	CTWH7-150-T200	48

<b>5 kV thru 34.5 kV Voltage Transformers</b>		
Primary Voltage	Model	Page Number
2400-4800	PTG3-1-60 & PTG3-2-60	48
2400-4800	PTW3-1-60 & PTW3-2-60	48
4200-8400	PTG4-1-75 & PTG4-2-75	50
4200-8400	PTW4-1-75 & PTW4-2-75	50
7200-14400	PTG5-1-110 & PTG5-2-110	52
7200-14400	PTW5-1-110 & PTW5-2-110	52
10200-24000	PT6-1-125	54
18000-24000	PT6-2-125	54
15240-34500	PT7-1-150	54
24000-34500	PT7-2-150 & PT7-2-200	54

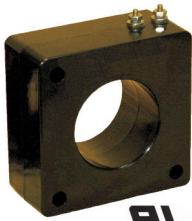
<b>5kV thru 34.5kV Control Power Transformers</b>		
Primary Voltage	Model	Page Number
2400-14400	CPTS3-60-5 & CPTS5-95-5	56
2400-14400	CPTS3-60-10 & CPTS5-95-10	56
2400-14400	CPTS3-60-15 & CPTS5-95-15	56
2400-4800	CPT3-60-25	56
7200-14400	CPTN5-95-25	58
2400-4800	CPT3-60-37.5	58
7200-14400	CPTN5-95-37.5	58
2400-14400	CPTD3-60-50 & CPTD5-95-50	58
19920-34500	CPTD7-150-25/37.5/50	60

<b>OEM Accessories</b>	
Series 95 Control Switches & Lockout Relays	60
Series FT Test Switches	61
Series RT Rack Mounted Test Switches	60
Open Circuit Protectors	61
Capacitor Trip Devices	61

<b>Accuracy Standards (IEEE C57.13)</b>	62-63
---	-------

# 600 Volt Current Transformers

## Model 180 SHT Window Diameter: 2.50"



Ratio	Continuous Thermal Current Rating Factor	
	Ambient	
	30°C	55°C
50:5-1500:5	1.33	1.0
1600:5	1.25	1.0
2000:5	1.0	0.75



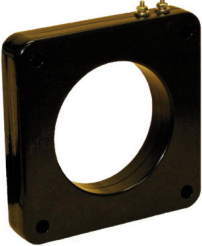
600 Volts Indoor  
10 kV BIL  
25 - 400 Hz

Height: 4.94" Depth: 2.19"  
Width: 4.50" Weight: 3.5 lbs.

\*IC Approved (T-189)

CATALOG NUMBER	CURRENT RATIO	RELAY CLASS	ANSI METERING CLASS AT 60HZ				
			B0.1	B0.2	B0.5	B0.9	B1.8
180SHT-500	50:5		2.4	—	—	—	—
180SHT-750	75:5		1.2	2.4	—	—	—
180SHT-101	100:5		1.2	2.4	4.8	—	—
180SHT-151	150:5 *		0.6	1.2	2.4	4.8	—
180SHT-201	200:5 *		0.6	0.6	1.2	2.4	—
180SHT-251	250:5 *		0.3	0.3	0.6	1.2	—
180SHT-301	300:5 *		0.3	0.3	0.6	1.2	2.4
180SHT-401	400:5 *		0.3	0.3	0.3	0.6	1.2
180SHT-501	500:5 *		0.3	0.3	0.3	0.6	1.2
180SHT-601	600:5 *		0.3	0.3	0.3	0.6	1.2
180SHT-751	750:5 *		0.3	0.3	0.3	0.6	1.2
180SHT-801	800:5 *		0.3	0.3	0.3	0.6	1.2
180SHT-102	1000:5 *		0.3	0.3	0.3	0.3	0.6
180SHT-122	1200:5 *		0.3	0.3	0.3	0.3	0.3
180SHT-152	1500:5 *		0.3	0.3	0.3	0.3	0.3
180SHT-162	1600:5 *		0.3	0.3	0.3	0.3	0.3
180SHT-202	2000:5 *		0.3	0.3	0.3	0.3	0.3

## Model 170 SHT Window Diameter: 4.25"



Ratio	Continuous Thermal Current Rating Factor	
	Ambient	
	30°C	55°C
200:5-400:5	2.0	2.0
500:5-800:5	2.0	1.5
1000:5-1600:5	1.33	1.0
2000:5-2500:5	1.0	0.8
3000:5	1.0	1.0
3500:5-4000:5	1.0	0.8



600 Volts Indoor, 10 kV BIL  
25 - 400 Hz

Height: 7.17" Depth: 1.28"  
Width: 6.73" Weight: 3.0 lbs.

170SHT-201	200:5		0.6	1.2	2.4	—	—
170SHT-251	250:5		0.6	0.6	1.2	2.4	—
170SHT-301	300:5		0.6	0.6	1.2	2.4	—
170SHT-401	400:5		0.3	0.3	0.6	1.2	2.4
170SHT-501	500:5		0.3	0.3	0.6	1.2	1.2
170SHT-601	600:5		0.3	0.3	0.6	0.6	1.2
170SHT-751	750:5		0.3	0.3	0.3	0.6	0.6
170SHT-801	800:5		0.3	0.3	0.3	0.6	0.6
170SHT-102	1000:5		0.3	0.3	0.3	0.6	0.6
170SHT-122	1200:5		0.3	0.3	0.3	0.3	0.6
170SHT-152	1500:5		0.3	0.3	0.3	0.3	0.6
170SHT-162	1600:5		0.3	0.3	0.3	0.3	0.6
170SHT-202	2000:5		0.3	0.3	0.3	0.3	0.3
170SHT-252	2500:5		0.3	0.3	0.3	0.3	0.3
170SHT-302	3000:5		0.3	0.3	0.3	0.3	0.3
170SHT-352	3500:5		0.3	0.3	0.3	0.3	0.3
170SHT-402	4000:5		0.3	0.3	0.3	0.3	0.3

## Model 100 Window Diameter: 4.00"



Ratio	Continuous Thermal Current Rating Factor	
	Ambient	
	30°C	55°C
200:5-400:5	2.0	2.0
500:5-600:5	2.0	1.5
800:5-1600:5	1.5	1.0
2000:5-3000:5	1.0	0.8



600 Volts Indoor, 10 kV BIL  
50 - 400 Hz

Height: 7.44" Depth: 5.00"  
Width: 7.00" Weight: 9.5 lbs.

\*IC Approved (T-153)

100-201	200:5	C10	0.6	0.6	1.2	2.4	—
100-301	300:5 *	C10	0.3	0.3	0.6	1.2	—
100-401	400:5 *	C20	0.3	0.3	0.6	0.6	1.2
100-501	500:5 *	C20	0.3	0.3	0.6	0.6	1.2
100-601	600:5 *	C20	0.3	0.3	0.3	0.6	0.6
100-801	800:5 *	C20	0.3	0.3	0.3	0.3	0.6
100-102	1000:5 *	C50	0.3	0.3	0.3	0.3	0.3
100-122	1200:5 *	C20	0.3	0.3	0.3	0.3	0.3
100-152	1500:5 *	C20	0.3	0.3	0.3	0.3	0.3
100-162	1600:5 *	C50	0.3	0.3	0.3	0.3	0.3
100-202	2000:5 *	C50	0.3	0.3	0.3	0.3	0.3
100-252	2500:5 *	C50	0.3	0.3	0.3	0.3	0.3
100-302	3000:5 *	C50	0.3	0.3	0.3	0.3	0.3

## Model 110 Window Diameter: 4.00"



Ratio	Continuous Thermal Current Rating Factor	
	Ambient	
	30°C	55°C
200:5-400:5	2.0	2.0
500:5-600:5	2.0	1.5
800:5	1.5	1.33
1000:5-1200:5	1.5	1.0
1500:5	1.33	1.0
1600:5	1.0	1.0
2000:5-2500:5	1.0	0.8
3000:5	1.0	0.6



600 Volts Indoor  
10 kV BIL 50 - 400 Hz

Height: 7.44" Width: 7.00"  
Depth: 2.88" Weight: 13.0 lbs.

110-201	200:5	C10	0.6	1.2	1.2	2.4	—
110-301	300:5	C20	0.3	0.6	0.6	1.2	2.4
110-401	400:5	C20	0.3	0.3	0.3	0.6	1.2
110-501	500:5	C20	0.3	0.3	0.3	0.6	0.6
110-601	600:5	C50	0.3	0.3	0.3	0.3	0.3
110-801	800:5	C50	0.3	0.3	0.3	0.3	0.3
110-102	1000:5	C100	0.3	0.3	0.3	0.3	0.6
110-122	1200:5	C50	0.3	0.3	0.3	0.3	0.3
110-152	1500:5	C100	0.3	0.3	0.3	0.3	0.3
110-162	1600:5	C100	0.3	0.3	0.3	0.3	0.3
110-202	2000:5	C100	0.3	0.3	0.3	0.3	0.3
110-252	2500:5	C100	0.3	0.3	0.3	0.3	0.3
110-302	3000:5	C100	0.3	0.3	0.3	0.3	0.3

# 600 Volt Current Transformers

## Model 296 Window Diameter: 1.50"



Ratio	Continuous Thermal Current Rating Factor	
	Ambient	
	30°C	55°C
50:5-250:5	2.0	2.0
300:5-400:5	2.0	1.5
500:5	1.5	1.5
600:5	1.5	1.33
750:5-800:5	1.5	1.0
1000:5	1.33	1.0

**RU** E93779  
 \*IC Approved (T-202) 600 Volts Indoor, 10 kV BIL Height: 6.75" Depth: 3.00"  
 50 - 400 Hz Width: 5.96" Weight: 18.0 lbs.

CATALOG NUMBER	CURRENT RATIO	RELAY CLASS	ANSI METERING CLASS AT 60HZ				
			B0.1	B0.2	B0.5	B0.9	B1.8
296-500	50:5	C10	1.2	2.4	4.8	—	—
296-750	75:5	C10	0.6	1.2	2.4	4.8	—
296-101	100:5 *	C20	0.6	0.6	1.2	2.4	4.8
296-151	150:5 *	C20	0.3	0.3	0.6	1.2	2.4
296-201	200:5 *	C20	0.3	0.3	0.6	0.6	1.2
296-251	250:5 *	C50	0.3	0.3	0.3	0.3	0.6
296-301	300:5 *	C50	0.3	0.3	0.3	0.3	0.6
296-401	400:5 *	C100	0.3	0.3	0.3	0.3	0.3
296-501	500:5	C50	0.3	0.3	0.3	0.3	0.3
296-601	600:5	C100	0.3	0.3	0.3	0.3	0.3
296-751	750:5	C100	0.3	0.3	0.3	0.3	0.3
296-801	800:5	C100	0.3	0.3	0.3	0.3	0.3
296-102	1000:5	C100	0.3	0.3	0.3	0.3	0.3

## Model 297 Window Diameter: 2.25"



Ratio	Continuous Thermal Current Rating Factor	
	Ambient	
	30°C	55°C
50:5-250:5	2.0	2.0
300:5-500:5	2.0	1.5
600:5	1.5	1.33

**RU** E93779  
 \*IC Approved (T-203) 600 Volts Indoor, 10 kV BIL Height: 6.75" Depth: 3.00"  
 50 - 400 Hz Width: 5.96" Weight: 15.0 lbs.

297-500	50:5	—	2.4	4.8	—	—	—
297-750	75:5	C10	1.2	2.4	4.8	4.8	—
297-101	100:5	C10	0.6	1.2	2.4	4.8	4.8
297-151	150:5 *	C20	0.6	0.6	1.2	2.4	2.4
297-201	200:5 *	C20	0.3	0.6	0.6	1.2	2.4
297-251	250:5 *	C20	0.3	0.3	0.3	0.6	1.2
297-301	300:5 *	C50	0.3	0.3	0.3	0.6	1.2
297-401	400:5 *	C50	0.3	0.3	0.3	0.3	0.6
297-501	500:5 *	C50	0.3	0.3	0.3	0.3	0.3
297-601	600:5 *	C100	0.3	0.3	0.3	0.3	0.3

## Model 298 Window Diameter: 3.00"



Ratio	Continuous Thermal Current Rating Factor	
	Ambient	
	30°C	55°C
50:5-300:5	2.0	2.0
400:5-500:5	2.0	1.5
600:5	1.5	1.33
750:5-800:5	1.5	1.0

**RU** E93779  
 \*IC Approved (T-204) 600 Volts Indoor, 10 kV BIL Height: 6.75" Depth: 3.00"  
 50 - 400 Hz Width: 5.96" Weight: 12.0 lbs.

298-500	50:5	—	2.4	4.8	—	—	—
298-750	75:5	—	1.2	1.2	4.8	—	—
298-101	100:5	C10	0.6	0.6	2.4	4.8	—
298-151	150:5 *	C10	0.6	0.6	1.2	2.4	4.8
298-201	200:5 *	C20	0.6	0.6	0.6	1.2	2.4
298-251	250:5 *	C20	0.3	0.3	0.6	1.2	2.4
298-301	300:5 *	C20	0.3	0.3	0.6	0.6	1.2
298-401	400:5 *	C20	0.3	0.3	0.3	0.3	0.6
298-501	500:5 *	C50	0.3	0.3	0.3	0.3	0.6
298-601	600:5 *	C50	0.3	0.3	0.3	0.3	0.3
298-751	750:5 *	C50	0.3	0.3	0.3	0.3	0.3
298-801	800:5 *	C50	0.3	0.3	0.3	0.3	0.3

## Model 299 Window Diameter: 3.38"



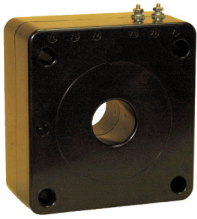
Ratio	Continuous Thermal Current Rating Factor	
	Ambient	
	30°C	55°C
50:5-300:5	2.0	2.0
400:5-500:5	2.0	1.5
600:5	1.5	1.33
750:5-800:5	1.5	1.0

**RU** E93779  
 \*IC Approved (T-205) 600 Volts Indoor, 10 kV BIL Height: 6.75" Depth: 3.00"  
 50 - 400 Hz Width: 5.96" Weight: 10.0 lbs.

299-500	50:5	—	4.8	4.8	—	—	—
299-750	75:5	—	1.2	2.4	4.8	—	—
299-101	100:5	—	0.6	1.2	2.4	4.8	—
299-151	150:5 *	C10	0.6	0.6	1.2	2.4	4.8
299-201	200:5 *	C10	0.6	0.6	1.2	1.2	2.4
299-251	250:5 *	C20	0.3	0.3	0.6	1.2	2.4
299-301	300:5 *	C20	0.3	0.3	0.3	0.6	1.2
299-401	400:5 *	C20	0.3	0.3	0.3	0.6	0.6
299-501	500:5 *	C20	0.3	0.3	0.3	0.3	0.6
299-601	600:5 *	C50	0.3	0.3	0.3	0.3	0.3
299-751	750:5 *	C50	0.3	0.3	0.3	0.3	0.3
299-801	800:5 *	C50	0.3	0.3	0.3	0.3	0.3

# 600 Volt Current Transformers

## Model 300 Window Diameter: 3.75"



\*IC Approved (T-206)

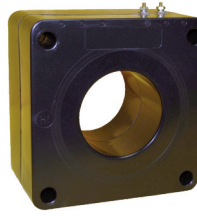
Ratio	Continuous Thermal Current Rating Factor	
	Ambient	
	30°C	55°C
50:5-300:5	2.0	2.0
400:5-500:5	2.0	1.5
600:5	1.5	1.33
750:5-800:5	1.5	1.0
1000:5-1200:5	1.33	1.0
1500:5	1.0	1.0
1600:5-2000:5	1.0	0.8

600 Volts Indoor, 10 kV BIL  
50 - 400 Hz

Height: 6.75" Depth: 3.00"  
Width: 5.96" Weight: 9.0 lbs.

CATALOG NUMBER	CURRENT RATIO	RELAY CLASS	ANSI METERING CLASS AT 60HZ				
			B0.1	B0.2	B0.5	B0.9	B1.8
300-500	50:5	—	4.8	—	—	—	—
300-750	75:5	—	2.4	2.4	—	—	—
300-101	100:5	—	2.4	2.4	4.8	—	—
300-151	150:5 *	—	0.6	0.6	2.4	2.4	4.8
300-201	200:5 *	C10	0.6	0.6	1.2	2.4	4.8
300-251	250:5 *	C10	0.3	0.6	1.2	1.2	2.4
300-301	300:5 *	C10	0.3	0.3	0.3	0.6	1.2
300-401	400:5 *	C20	0.3	0.3	0.3	0.6	1.2
300-501	500:5 *	C20	0.3	0.3	0.3	0.6	0.6
300-601	600:5 *	C20	0.3	0.3	0.3	0.3	0.6
300-751	750:5 *	C20	0.3	0.3	0.3	0.3	0.3
300-801	800:5 *	C50	0.3	0.3	0.3	0.3	0.3
300-102	1000:5 *	C50	0.3	0.3	0.3	0.3	0.3
300-122	1200:5 *	C10	0.3	0.3	0.3	0.3	0.3
300-152	1500:5 *	C10	0.3	0.3	0.3	0.3	0.3
300-162	1600:5 *	C10	0.3	0.3	0.3	0.3	0.3
300-202	2000:5 *	C20	0.3	0.3	0.3	0.3	0.3

## Model 112 Window Diameter: 2.25"



\*IC Approved (AE-0837)

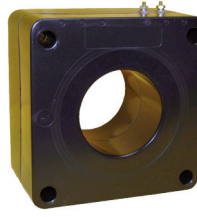
Ratio	Continuous Thermal Current Rating Factor	
	Ambient	
	30°C	55°C
50:5-300:5	2.0	2.0
400:5-500:5	2.0	1.5
600:5	1.5	1.33
750:5-800:5	1.5	1.0
1000:5-1200:5	1.33	1.0

600 Volts Indoor, 10 kV BIL  
50 - 400 Hz

Height: 7.56" Depth: 4.00"  
Width: 7.00" Weight: 25.0 lbs.

112-500	50:5	C10	1.2	2.4	—	—	—
112-750	75:5	C20	0.6	1.2	2.4	4.8	—
112-101	100:5 *	C20	0.6	0.6	2.4	2.4	4.8
112-151	150:5 *	C50	0.3	0.6	1.2	1.2	2.4
112-201	200:5 *	C50	0.3	0.3	0.6	0.6	1.2
112-251	250:5 *	C50	0.3	0.3	0.3	0.3	0.6
112-301	300:5 *	C100	0.3	0.3	0.3	0.3	0.6
112-401	400:5 *	C100	0.3	0.3	0.3	0.3	0.3
112-501	500:5 *	C100	0.3	0.3	0.3	0.3	0.3
112-601	600:5 *	C100	0.3	0.3	0.3	0.3	0.3
112-751	750:5 *	C200	0.3	0.3	0.3	0.3	0.3
112-801	800:5 *	C200	0.3	0.3	0.3	0.3	0.3
112-102	1000:5 *	C200	0.3	0.3	0.3	0.3	0.3
112-122	1200:5 *	C200	0.3	0.3	0.3	0.3	0.3

## Model 113 Window Diameter: 2.75"



\*IC Approved (T-190)

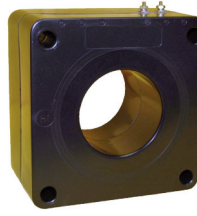
Ratio	Continuous Thermal Current Rating Factor	
	Ambient	
	30°C	55°C
50:5-300:5	2.0	2.0
400:5-500:5	2.0	1.5
600:5	1.5	1.33
750:5-800:5	1.5	1.0
1000:5-1200:5	1.33	1.0
1500:5	1.0	0.8

600 Volts Indoor, 10 kV BIL  
50 - 400 Hz

Height: 7.56" Depth: 4.00"  
Width: 7.00" Weight: 13.0 lbs.

113-500	50:5	C10	2.4	4.8	—	—	—
113-750	75:5	C10	0.6	1.2	4.8	4.8	—
113-101	100:5	C20	0.6	0.6	2.4	2.4	4.8
113-151	150:5	C20	0.3	0.3	0.6	1.2	2.4
113-201	200:5 *	C20	0.3	0.3	0.6	0.6	1.2
113-251	250:5 *	C50	0.3	0.3	0.6	0.6	1.2
113-301	300:5 *	C50	0.3	0.3	0.3	0.6	1.2
113-401	400:5 *	C100	0.3	0.3	0.3	0.3	0.6
113-501	500:5 *	C100	0.3	0.3	0.3	0.3	0.3
113-601	600:5 *	C100	0.3	0.3	0.3	0.3	0.3
113-751	750:5 *	C200	0.3	0.3	0.3	0.3	0.3
113-801	800:5 *	C200	0.3	0.3	0.3	0.3	0.3
113-102	1000:5 *	C200	0.3	0.3	0.3	0.3	0.3
113-122	1200:5 *	C200	0.3	0.3	0.3	0.3	0.3
113-152	1500:5 *	C200	0.3	0.3	0.3	0.3	0.3

## Model 114 Window Diameter: 3.25"



\*IC Approved (T-191)

Ratio	Continuous Thermal Current Rating Factor	
	Ambient	
	30°C	55°C
50:5-300:5	2.0	2.0
400:5-500:5	2.0	1.5
600:5	1.5	1.33
750:5-1000:5	1.5	1.0
1200:5	1.33	1.0
1500:5-1600:5	1.0	0.8

600 Volts Indoor, 10 kV BIL  
50 - 400 Hz

Height: 7.56" Depth: 4.00"  
Width: 7.00" Weight: 22.0 lbs.

114-500	50:5	C10	2.4	4.8	—	—	—
114-750	75:5	C10	1.2	2.4	4.8	—	—
114-101	100:5	C10	1.2	1.2	2.4	4.8	—
114-151	150:5 *	C20	0.6	0.6	1.2	2.4	4.8
114-201	200:5 *	C20	0.3	0.3	0.6	1.2	2.4
114-251	250:5 *	C50	0.3	0.3	0.6	1.2	1.2
114-301	300:5 *	C50	0.3	0.3	0.6	0.6	1.2
114-401	400:5 *	C100	0.3	0.3	0.3	0.3	0.6
114-501	500:5 *	C100	0.3	0.3	0.3	0.3	0.6
114-601	600:5 *	C100	0.3	0.3	0.3	0.3	0.3
114-751	750:5 *	C100	0.3	0.3	0.3	0.3	0.3
114-801	800:5 *	C200	0.3	0.3	0.3	0.3	0.3
114-102	1000:5 *	C100	0.3	0.3	0.3	0.3	0.3
114-122	1200:5 *	C200	0.3	0.3	0.3	0.3	0.3
114-152	1500:5 *	C200	0.3	0.3	0.3	0.3	0.3
114-162	1600:5 *	C200	0.3	0.3	0.3	0.3	0.3

# 600 Volt Current Transformers

## Model 115 Window Diameter: 4.00"



\*IC Approved (T-192)

Ratio	Continuous Thermal Current Rating Factor	
	Ambient	
	30°C	55°C
50:5-400:5	2.0	2.0
500:5-600:5	2.0	1.5
750:5	1.5	1.33
800:5-1000:5	1.5	1.0
1200:5	1.33	1.0
1500:5-2500:5	1.0	0.8
3000:5-3200:5	0.8	0.6

600 Volts Indoor, 10 kV BIL      Height: 6.75"    Depth: 3.00"  
50 - 400 Hz                              Width: 5.96"    Weight: 19.0 lbs.

CATALOG NUMBER	CURRENT RATIO	RELAY CLASS	ANSI METERING CLASS AT 60HZ				
			B0.1	B0.2	B0.5	B0.9	B1.8
115-500	50:5	—	2.4	4.8	—	—	—
115-750	75:5	—	1.2	2.4	4.8	—	—
115-101	100:5	C10	1.2	1.2	2.4	4.8	—
115-151	150:5 *	C10	0.6	0.6	1.2	2.4	4.8
115-201	200:5 *	C20	0.3	0.6	0.6	1.2	2.4
115-251	250:5 *	C20	0.3	0.3	0.6	1.2	2.4
115-301	300:5 *	C20	0.3	0.3	0.3	0.6	1.2
115-401	400:5 *	C50	0.3	0.3	0.3	0.3	0.6
115-501	500:5 *	C50	0.3	0.3	0.3	0.3	0.3
115-601	600:5 *	C50	0.3	0.3	0.3	0.3	0.3
115-751	750:5 *	C100	0.3	0.3	0.3	0.3	0.3
115-801	800:5 *	C100	0.3	0.3	0.3	0.3	0.3
115-102	1000:5 *	C100	0.3	0.3	0.3	0.3	0.3
115-122	1200:5 *	C100	0.3	0.3	0.3	0.3	0.3
115-152	1500:5 *	C100	0.3	0.3	0.3	0.3	0.3
115-162	1600:5 *	C100	0.3	0.3	0.3	0.3	0.3
115-202	2000:5 *	C200	0.3	0.3	0.3	0.3	0.3
115-252	2500:5 *	C100	0.3	0.3	0.3	0.3	0.3
115-302	3000:5 *	C200	0.3	0.3	0.3	0.3	0.3
115-322	3200:5 *	C200	0.3	0.3	0.3	0.3	0.3

## Model 117 Window Diameter: 4.62"



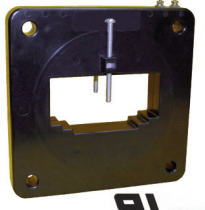
\*IC Approved (T-193)

Ratio	Continuous Thermal Current Rating Factor	
	Ambient	
	30°C	55°C
50:5-400:5	2.0	2.0
500:5-600:5	2.0	1.5
750:5-800:5	1.5	1.33
1000:5	1.5	1.0
1200:5-1500:5	1.33	1.0
1600:5	1.0	0.8
2000:5-3200:5	1.0	0.6
4000:5	0.8	0.6

600 Volts Indoor, 10 kV BIL      Height: 6.75"    Depth: 3.00"  
50 - 400 Hz                              Width: 5.96"    Weight: 13.0 lbs.

117-500	50:5	—	2.4	4.8	—	—	—
117-750	75:5	—	0.6	1.2	4.8	4.8	—
117-101	100:5	—	0.6	0.6	2.4	2.4	—
117-151	150:5	C10	0.3	0.3	0.6	1.2	4.8
117-201	200:5	C10	0.3	0.3	0.6	0.6	4.8
117-251	250:5 *	C20	0.3	0.3	0.6	0.6	2.4
117-301	300:5 *	C20	0.3	0.3	0.3	0.3	2.4
117-401	400:5 *	C20	0.3	0.3	0.3	0.3	1.2
117-501	500:5 *	C20	0.3	0.3	0.3	0.3	0.6
117-601	600:5 *	C20	0.3	0.3	0.3	0.3	0.6
117-751	750:5 *	C50	0.3	0.3	0.3	0.3	0.3
117-801	800:5 *	C50	0.3	0.3	0.3	0.3	0.3
117-102	1000:5 *	C50	0.3	0.3	0.3	0.3	0.3
117-122	1200:5 *	C100	0.3	0.3	0.3	0.3	0.3
117-152	1500:5 *	C50	0.3	0.3	0.3	0.3	0.3
117-162	1600:5 *	C50	0.3	0.3	0.3	0.3	0.3
117-202	2000:5 *	C100	0.3	0.3	0.3	0.3	0.3
117-252	2500:5 *	C100	0.3	0.3	0.3	0.3	0.3
117-302	3000:5 *	—	0.3	0.3	0.3	0.3	0.3
117-322	3200:5 *	—	0.3	0.3	0.3	0.3	0.3
117-402	4000:5 *	—	0.3	0.3	0.3	0.3	0.3

## Model 125 Window Diameter: 6.31"



Shown with Bus Bar Mounting Kit. P/N 0221A26076

Ratio	Continuous Thermal Current Rating Factor	
	Ambient	
	30°C	55°C
600:5-1600:5	1.5	1.33
2000:5	1.5	1.0
2500:5-3500:5	1.33	1.0
4000:5	1.0	0.8

600 Volts Indoor, 10 kV BIL      Height: 8.94"    Depth: 1.28"  
50 - 400 Hz                              Width: 8.50"    Weight: 3.0 lbs.

125-601	600:5	0.3	0.3	0.3	1.2	1.2	2.4
125-751	750:5	0.3	0.3	0.3	0.6	1.2	2.4
125-801	800:5	0.3	0.3	0.3	0.6	1.2	2.4
125-102	1000:5	0.3	0.3	0.3	0.3	0.6	1.2
125-122	1200:5	0.3	0.3	0.3	0.3	0.6	1.2
125-152	1500:5	0.3	0.3	0.3	0.3	0.3	0.6
125-162	1600:5	0.3	0.3	0.3	0.3	0.3	0.6
125-202	2000:5	0.3	0.3	0.3	0.3	0.3	0.6
125-252	2500:5	0.3	0.3	0.3	0.3	0.3	0.6
125-302	3000:5	0.3	0.3	0.3	0.3	0.3	0.6
125-352	3500:5	0.3	0.3	0.3	0.3	0.3	0.3
125-402	4000:5	0.3	0.3	0.3	0.3	0.3	0.3

## Model 120 Window Diameter: 5.75"



\*IC Approved (T-154)

Ratio	Continuous Thermal Current Rating Factor	
	Ambient	
	30°C	55°C
200:5-600:5	2.0	2.0
800:5	2.0	1.5
1000:5	1.5	1.5
1200:5	1.5	1.33
1500:5	1.5	1.0
1600:5-2000:5	1.33	1.0
2500:5-4000:5	1.0	0.8

600 Volts Indoor, 10 kV BIL      Height: 8.94"    Depth: 2.17"  
50 - 400 Hz                              Width: 8.50"    Weight: 11.0 lbs.

120-201	200:5	—	1.2	1.2	2.4	4.8	4.8
120-301	300:5 *	C10	0.3	0.3	1.2	0.6	2.4
120-401	400:5 *	C10	0.3	0.3	0.6	0.6	2.4
120-501	500:5 *	C20	0.3	0.3	0.6	0.6	1.2
120-601	600:5 *	C20	0.3	0.3	0.3	0.6	0.6
120-801	800:5 *	C20	0.3	0.3	0.3	0.3	0.6
120-102	1000:5 *	C20	0.3	0.3	0.3	0.3	0.6
120-122	1200:5 *	C50	0.3	0.3	0.3	0.3	0.3
120-152	1500:5 *	C50	0.3	0.3	0.3	0.3	0.3
120-162	1600:5 *	C50	0.3	0.3	0.3	0.3	0.3
120-202	2000:5 *	C50	0.3	0.3	0.3	0.3	0.3
120-252	2500:5 *	C50	0.3	0.3	0.3	0.3	0.3
120-302	3000:5 *	C50	0.3	0.3	0.3	0.3	0.3
120-352	3500:5 *	C20	0.3	0.3	0.3	0.3	0.3
120-402	4000:5 *	C50	0.3	0.3	0.3	0.3	0.3

# 600 Volt Current Transformers

## Model 130 Window Diameter: 5.75"



Ratio	Continuous Thermal Current Rating Factor	
	Ambient	
	30°C	55°C
200:5-500:5	2.0	2.0
600:5-800:5	2.0	1.5
1000:5	1.5	1.33
1200:5-1500:5	1.5	1.0
1600:5-2000:5	1.33	1.0
2500:5-3000:5	1.0	0.8
4000:5	1.0	0.6

600 Volts Indoor, 10 kV BIL  
50 - 400 Hz  
Height: 8.94" Depth: 2.90"  
Width: 8.50" Weight: 18.0 lbs.

CATALOG NUMBER	CURRENT RATIO	RELAY CLASS	ANSI METERING CLASS AT 60HZ				
			B0.1	B0.2	B0.5	B0.9	B1.8
130-201	200:5	C10	0.6	0.6	2.4	2.4	4.8
130-301	300:5	C20	0.3	0.3	1.2	1.2	2.4
130-401	400:5	C20	0.3	0.3	0.6	1.2	1.2
130-501	500:5	C20	0.3	0.3	0.3	0.6	1.2
130-601	600:5	C20	0.3	0.3	0.3	0.6	1.2
130-801	800:5	C50	0.3	0.3	0.3	0.3	0.6
130-102	1000:5	C50	0.3	0.3	0.3	0.3	0.3
130-122	1200:5	C100	0.3	0.3	0.3	0.3	0.3
130-152	1500:5	C100	0.3	0.3	0.3	0.3	0.3
130-162	1600:5	C100	0.3	0.3	0.3	0.3	0.3
130-202	2000:5	C100	0.3	0.3	0.3	0.3	0.3
130-252	2500:5	C100	0.3	0.3	0.3	0.3	0.3
130-302	3000:5	C100	0.3	0.3	0.3	0.3	0.3
130-402	4000:5	C100	0.3	0.3	0.3	0.3	0.3

## Model 135 Window Diameter: 5.75"

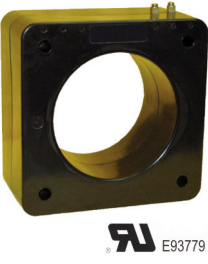


Ratio	Continuous Thermal Current Rating Factor	
	Ambient	
	30°C	55°C
50:5-600:5	2.0	2.0
750:5-800:5	2.0	1.5
1000:5-1200:5	1.5	1.33
1500:5-1600:5	1.5	1.0
2000:5	1.33	1.0
2500:5-3500:5	1.0	0.8
4000:5-5000:5	1.0	0.6

\*IC Approved (T-194)  
600 Volts Indoor, 10 kV BIL  
50 - 400 Hz  
Height: 9.65" Depth: 3.00"  
Width: 9.21" Weight: 18.0 lbs.

135-500	50:5	—	4.8	—	—	—	—
135-750	75:5	—	2.4	4.8	—	—	—
135-101	100:5	—	1.2	2.4	4.8	—	—
135-151	150:5	C10	0.6	1.2	2.4	4.8	—
135-201	200:5 *	C10	0.6	0.6	1.2	2.4	4.8
135-251	250:5 *	C20	0.6	0.6	1.2	2.4	2.4
135-301	300:5 *	C20	0.3	0.3	0.6	1.2	2.4
135-401	400:5 *	C20	0.3	0.3	0.3	0.6	1.2
135-501	500:5 *	C50	0.3	0.3	0.3	0.3	0.6
135-601	600:5 *	C50	0.3	0.3	0.3	0.3	0.6
135-751	750:5 *	C50	0.3	0.3	0.3	0.3	0.6
135-801	800:5 *	C50	0.3	0.3	0.3	0.3	0.6
135-102	1000:5 *	C100	0.3	0.3	0.3	0.3	0.3
135-122	1200:5 *	C100	0.3	0.3	0.3	0.3	0.3
135-152	1500:5 *	C100	0.3	0.3	0.3	0.3	0.3
135-162	1600:5 *	C100	0.3	0.3	0.3	0.3	0.3
135-202	2000:5 *	C100	0.3	0.3	0.3	0.3	0.3
135-252	2500:5 *	C200	0.3	0.3	0.3	0.3	0.3
135-302	3000:5 *	C200	0.3	0.3	0.3	0.3	0.3
135-322	3200:5 *	C200	0.3	0.3	0.3	0.3	0.3
135-352	3500:5 *	C200	0.3	0.3	0.3	0.3	0.3
135-402	4000:5 *	C200	0.3	0.3	0.3	0.3	0.3
135-502	5000:5 *	C200	0.3	0.3	0.3	0.3	0.3

## Model 139 Window Diameter: 6.50"

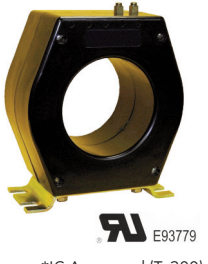


Ratio	Continuous Thermal Current Rating Factor	
	Ambient	
	30°C	55°C
50:5-800:5	2.0	2.0
1000:5	1.5	1.5
1200:5	1.5	1.33
1500:5-2500:5	1.5	1.0
3000:5	1.33	1.0
3500:5	1.0	1.0
4000:5-5000:5	1.0	0.8

600 Volts Indoor, 10 kV BIL  
50 - 400 Hz  
Height: 10.32" Depth: 5.00"  
Width: 9.88" Weight: 40.0 lbs.

139-500	50:5	C10	4.8	—	—	—	—
139-750	75:5	C10	2.4	4.8	—	—	—
139-101	100:5	C20	1.2	2.4	4.8	4.8	—
139-151	150:5	C20	0.6	1.2	2.4	2.4	4.8
139-201	200:5	C20	0.6	0.6	1.2	2.4	2.4
139-251	250:5	C50	0.3	0.6	1.2	1.2	2.4
139-301	300:5	C50	0.3	0.3	0.6	1.2	1.2
139-401	400:5	C50	0.3	0.3	0.3	0.6	1.2
139-501	500:5	C100	0.3	0.3	0.3	0.3	0.6
139-601	600:5	C100	0.3	0.3	0.3	0.3	0.6
139-751	750:5	C100	0.3	0.3	0.3	0.3	0.3
139-801	800:5	C100	0.3	0.3	0.3	0.3	0.3
139-102	1000:5	C200	0.3	0.3	0.3	0.3	0.3
139-122	1200:5	C200	0.3	0.3	0.3	0.3	0.3
139-152	1500:5	C200	0.3	0.3	0.3	0.3	0.3
139-162	1600:5	C200	0.3	0.3	0.3	0.3	0.3
139-202	2000:5	C200	0.3	0.3	0.3	0.3	0.3
139-252	2500:5	C200	0.3	0.3	0.3	0.3	0.3
139-302	3000:5	C400	0.3	0.3	0.3	0.3	0.3
139-352	3500:5	C200	0.3	0.3	0.3	0.3	0.3
139-402	4000:5	C200	0.3	0.3	0.3	0.3	0.3
139-502	5000:5	C400	0.3	0.3	0.3	0.3	0.3

## Model 203 Window Diameter: 5.25"



Ratio	Continuous Thermal Current Rating Factor	
	Ambient	
	30°C	55°C
200:5-800:5	2.0	2.0
1000:5-1200:5	2.0	1.5
1500:5-1600:5	1.33	1.0
2000:5-2500:5	1.0	0.8
3000:5-4000:5	1.0	0.6
5000:5	0.8	0.3

\*IC Approved (T-200)  
600 Volts Indoor, 10 kV BIL  
50 - 400 Hz  
Height: 10.15" Depth: 4.62"  
Width: 8.38" Weight: 26.0 lbs.

203-201	200:5 *	C20	0.6	0.6	1.2	2.4	—
203-251	250:5 *	C20	0.3	0.6	1.2	1.2	2.4
203-301	300:5 *	C50	0.3	0.3	0.6	1.2	1.2
203-401	400:5 *	C50	0.3	0.3	0.3	0.6	1.2
203-501	500:5 *	C50	0.3	0.3	0.3	0.3	0.6
203-601	600:5 *	C100	0.3	0.3	0.3	0.3	0.6
203-751	750:5 *	C100	0.3	0.3	0.3	0.3	0.3
203-801	800:5 *	C100	0.3	0.3	0.3	0.3	0.3
203-102	1000:5 *	C100	0.3	0.3	0.3	0.3	0.3
203-122	1200:5 *	C200	0.3	0.3	0.3	0.3	0.3
203-152	1500:5 *	C200	0.3	0.3	0.3	0.3	0.3
203-162	1600:5 *	C200	0.3	0.3	0.3	0.3	0.3
203-202	2000:5 *	C200	0.3	0.3	0.3	0.3	0.3
203-252	2500:5 *	C200	0.3	0.3	0.3	0.3	0.3
203-302	3000:5 *	C200	0.3	0.3	0.3	0.3	0.3
203-402	4000:5 *	C100	0.3	0.3	0.3	0.3	0.3
203-502	5000:5 *	C100	0.3	0.3	0.3	0.3	0.3

## 600 Volt Current Transformers

### Model 137

Window Diameter: 5.50"



**RU** E93779

Ratio	Continuous Thermal Current Rating Factor	
	Ambient	
	30°C	55°C
50:5-800:5	2.0	2.0
1000:5-1200:5	2.0	1.5
1500:5-1600:5	1.5	1.33
2000:5-2500:5	1.5	1.0
3000:5	1.33	1.0
3500:5-4000:5	1.0	0.8
5000:5	0.6	0.3

600 Volts Indoor, 10 kV BIL  
50 - 400 Hz

Height: 10.32" Depth: 5.00"  
Width: 9.88" Weight: 50.0 lbs.

\*IC Approved (T-260)

CATALOG NUMBER	CURRENT RATIO	RELAY CLASS	ANSI METERING CLASS AT 60HZ				
			B0.1	B0.2	B0.5	B0.9	B1.8
137-500	50:5	C10	2.4	4.8	—	—	—
137-750	75:5	C20	1.2	2.4	4.8	—	—
137-101	100:5	C20	1.2	1.2	2.4	4.8	—
137-151	150:5 *	C20	0.6	0.6	1.2	2.4	4.8
137-201	200:5 *	C50	0.3	0.6	1.2	1.2	2.4
137-251	250:5 *	C50	0.3	0.3	0.6	1.2	1.2
137-301	300:5 *	C100	0.3	0.3	0.6	0.6	1.2
137-401	400:5 *	C100	0.3	0.3	0.3	0.3	0.6
137-501	500:5 *	C100	0.3	0.3	0.3	0.3	0.6
137-601	600:5 *	C200	0.3	0.3	0.3	0.3	0.3
137-751	750:5 *	C200	0.3	0.3	0.3	0.3	0.3
137-801	800:5 *	C200	0.3	0.3	0.3	0.3	0.3
137-102	1000:5 *	C200	0.3	0.3	0.3	0.3	0.3
137-122	1200:5 *	C400	0.3	0.3	0.3	0.3	0.3
137-152	1500:5 *	C400	0.3	0.3	0.3	0.3	0.3
137-162	1600:5 *	C400	0.3	0.3	0.3	0.3	0.3
137-202	2000:5 *	C400	0.3	0.3	0.3	0.3	0.3
137-252	2500:5 *	C400	0.3	0.3	0.3	0.3	0.3
137-302	3000:5 *	C400	0.3	0.3	0.3	0.3	0.3
137-352	3500:5 *	C400	0.3	0.3	0.3	0.3	0.3
137-402	4000:5 *	C400	0.3	0.3	0.3	0.3	0.3
137-502	5000:5 *	C400	0.3	0.3	0.3	0.3	0.3

### Model 140

Window Diameter: 8.13"



**RU** E93779

Ratio	Continuous Thermal Current Rating Factor	
	Ambient	
	30°C	55°C
50:5-800:5	2.0	2.0
1000:5	2.0	1.5
1200:5	1.5	1.5
1500:5	1.5	1.0
2000-2500:5	1.33	1.0
3000:5-5000:5	1.0	0.8
6000:5	1.0	0.6

\*IC Approved (AE-0658)

600 Volts Indoor, 10 kV BIL  
50 - 400 Hz

Height: 11.91" Depth: 3.00"  
Width: 11.10" Weight: 22.0 lbs.

140-500	50:5	—	—	—	—	—	—
140-101	100:5	—	2.4	4.8	—	—	—
140-201	200:5	C10	1.2	1.2	2.4	4.8	—
140-251	250:5	C20	1.2	1.2	2.4	2.4	4.8
140-301	300:5	C20	0.6	1.2	1.2	2.4	2.4
140-401	400:5 *	C20	0.3	0.3	0.6	1.2	2.4
140-501	500:5 *	C20	0.3	0.3	0.6	1.2	1.2
140-601	600:5 *	C50	0.3	0.3	0.3	0.6	1.2
140-801	800:5 *	C50	0.3	0.3	0.3	0.3	0.6
140-102	1000:5 *	C50	0.3	0.3	0.3	0.3	0.6
140-122	1200:5 *	C100	0.3	0.3	0.3	0.3	0.3
140-152	1500:5 *	C100	0.3	0.3	0.3	0.3	0.3
140-202	2000:5 *	C100	0.3	0.3	0.3	0.3	0.3
140-252	2500:5 *	C100	0.3	0.3	0.3	0.3	0.3
140-302	3000:5 *	C100	0.3	0.3	0.3	0.3	0.3
140-402	4000:5 *	C200	0.3	0.3	0.3	0.3	0.3
140-502	5000:5 *	C50	0.3	0.3	0.3	0.3	0.3
140-602	6000:5 *	C100	0.3	0.3	0.3	0.3	0.3

### Model 141

Window Diameter: 8.13"



**RU** E93779

Ratio	Continuous Thermal Current Rating Factor	
	Ambient	
	30°C	55°C
50:5-500:5	2.0	2.0
600:5-1200:5	2.0	1.5
1500:5	1.5	1.0
2000:5	1.33	1.0
2500:5	1.5	1.33
3000:5	1.5	1.0
4000:5-5000:5	1.0	0.8
6000:5	1.0	0.6

\*IC Approved (AE-0658)

600 Volts Indoor, 10 kV BIL  
50 - 400 Hz

Height: 11.91" Depth: 6.00"  
Width: 11.10" Weight: 44.0 lbs.

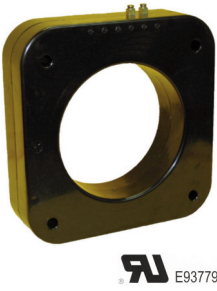
141-500	50:5	C10	4.8	—	—	—	—
141-101	100:5	C10	2.4	2.4	—	—	—
141-201	200:5	C20	0.6	1.2	1.2	2.4	4.8
141-301	300:5	C50	0.6	0.6	1.2	1.2	2.4
141-401	400:5 *	C50	0.3	0.3	0.6	0.6	1.2
141-501	500:5 *	C100	0.3	0.3	0.3	0.6	0.6
141-601	600:5 *	C100	0.3	0.3	0.3	0.3	0.6
141-801	800:5 *	C100	0.3	0.3	0.3	0.3	0.3
141-102	1000:5 *	C200	0.3	0.3	0.3	0.3	0.3
141-122	1200:5 *	C200	0.3	0.3	0.3	0.3	0.3
141-152	1500:5 *	C400	0.3	0.3	0.3	0.3	0.3
141-202	2000:5 *	C400	0.3	0.3	0.3	0.3	0.3
141-252	2500:5 *	C400	0.3	0.3	0.3	0.3	0.3
141-302	3000:5 *	C400	0.3	0.3	0.3	0.3	0.3
141-402	4000:5 *	C400	0.3	0.3	0.3	0.3	0.3
141-502	5000:5 *	C400	0.3	0.3	0.3	0.3	0.3
141-602	6000:5 *	C400	0.3	0.3	0.3	0.3	0.3



## 600 Volt Current Transformers

### Model 144

Window Diameter: 6.00"



Ratio	Continuous Thermal Current Rating Factor	
	Ambient	
	30°C	55°C
50:5-500:5	2.0	2.0
600:5	2.0	1.5
750:5	2.0	2.0
800:5-1000:5	2.0	1.5
1200:5	1.5	1.33
1500:5-2000:5	1.5	1.0
2500:5	1.33	1.0
3000:5-4000:5	1.0	0.8
5000:5	1.0	0.6
6000:5	0.8	0.6

600 Volts Indoor, 10 kV BIL  
50 - 400 Hz

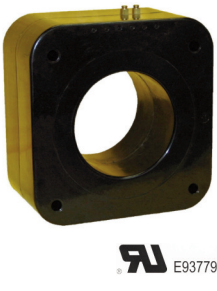
Height: 11.91" Depth: 3.00"  
Width: 11.10" Weight: 40.0 lbs.

\*IC Approved (AE-0642)

CATALOG NUMBER	CURRENT RATIO	RELAY CLASS	ANSI METERING CLASS AT 60HZ				
			B0.1	B0.2	B0.5	B0.9	B1.8
144-500	50:5	C10	2.4	4.8	—	—	—
144-750	75:5	C10	1.2	2.4	—	—	—
144-101	100:5 *	C10	1.2	1.2	2.4	4.8	—
144-151	150:5 *	C20	0.6	0.6	1.2	2.4	4.8
144-201	200:5 *	C20	0.6	0.6	1.2	2.4	2.4
144-251	250:5 *	C50	0.3	0.3	0.6	1.2	2.4
144-301	300:5 *	C50	0.3	0.3	0.6	0.6	1.2
144-401	400:5 *	C50	0.3	0.3	0.3	0.6	0.6
144-501	500:5 *	C100	0.3	0.3	0.3	0.6	0.6
144-601	600:5 *	C100	0.3	0.3	0.3	0.3	0.6
144-751	750:5 *	C100	0.3	0.3	0.3	0.3	0.3
144-801	800:5 *	C100	0.3	0.3	0.3	0.3	0.3
144-102	1000:5 *	C200	0.3	0.3	0.3	0.3	0.3
144-122	1200:5 *	C200	0.3	0.3	0.3	0.3	0.3
144-152	1500:5 *	C200	0.3	0.3	0.3	0.3	0.3
144-162	1600:5 *	C200	0.3	0.3	0.3	0.3	0.3
144-202	2000:5 *	C200	0.3	0.3	0.3	0.3	0.3
144-252	2500:5 *	C400	0.3	0.3	0.3	0.3	0.3
144-302	3000:5 *	C400	0.3	0.3	0.3	0.3	0.3
144-322	3200:5 *	C400	0.3	0.3	0.3	0.3	0.3
144-352	3500:5 *	C200	0.3	0.3	0.3	0.3	0.3
144-402	4000:5 *	C400	0.3	0.3	0.3	0.3	0.3
144-502	5000:5 *	C400	0.3	0.3	0.3	0.3	0.3
144-602	6000:5 *	C400	0.3	0.3	0.3	0.3	0.3

### Model 145

Window Diameter: 6.00"



Ratio	Continuous Thermal Current Rating Factor	
	Ambient	
	30°C	55°C
50:5-400:5	2.0	2.0
500:5-800:5	2.0	1.5
1000:5	1.5	1.33
1200:5-1500:5	1.5	1.0
1600:5-2000:5	1.33	1.0
2500:5-3500:5	1.0	0.8
4000:5	1.0	0.6
5000:5-6000:5	0.8	0.6

600 Volts Indoor, 10 kV BIL  
50 - 400 Hz

Height: 11.91" Depth: 6.00"  
Width: 11.10" Weight: 83.0 lbs.

\*IC Approved (AE-0651)

145-500	50:5	C20	1.2	4.8	—	—	—
145-750	75:5	C20	1.2	2.4	4.8	4.8	—
145-101	100:5 *	C50	0.6	1.2	2.4	4.8	4.8
145-151	150:5 *	C50	0.6	0.6	1.2	2.4	2.4
145-201	200:5 *	C100	0.3	0.6	0.6	1.2	2.4
145-251	250:5 *	C100	0.3	0.3	0.6	0.6	1.2
145-301	300:5 *	C100	0.3	0.3	0.3	0.6	1.2
145-401	400:5 *	C200	0.3	0.3	0.3	0.6	0.6
145-501	500:5 *	C200	0.3	0.3	0.3	0.3	0.3
145-601	600:5 *	C200	0.3	0.3	0.3	0.3	0.3
145-751	750:5 *	C400	0.3	0.3	0.3	0.3	0.3
145-801	800:5 *	C400	0.3	0.3	0.3	0.3	0.3
145-102	1000:5 *	C400	0.3	0.3	0.3	0.3	0.3
145-122	1200:5 *	C400	0.3	0.3	0.3	0.3	0.3
145-152	1500:5 *	C800	0.3	0.3	0.3	0.3	0.3
145-162	1600:5 *	C800	0.3	0.3	0.3	0.3	0.3
145-202	2000:5 *	C800	0.3	0.3	0.3	0.3	0.3
145-252	2500:5 *	C400	0.3	0.3	0.3	0.3	0.3
145-302	3000:5 *	C800	0.3	0.3	0.3	0.3	0.3
145-322	3200:5 *	C800	0.3	0.3	0.3	0.3	0.3
145-352	3500:5 *	C800	0.3	0.3	0.3	0.3	0.3
145-402	4000:5 *	C800	0.3	0.3	0.3	0.3	0.3
145-502	5000:5 *	C800	0.3	0.3	0.3	0.3	0.3
145-602	6000:5 *	C800	0.3	0.3	0.3	0.3	0.3

### Model 147

Window Diameter: 10.00"



Ratio	Continuous Thermal Current Rating Factor	
	Ambient	
	30°C	55°C
2000:5-5000:5	2.0	-
6000:5	1.5	-
8000:5-10000:5	1.0	-

600 Volts Indoor, 10 kV BIL  
50 - 400 Hz

Height: 14.50" Depth: 3.50"  
Width: 14.50" Weight: 50.0 lbs.

147-202	2000:5	C200	0.3	0.3	0.3	0.3	0.3
147-252	2500:5	C200	0.3	0.3	0.3	0.3	0.3
147-302	3000:5	C200	0.3	0.3	0.3	0.3	0.3
147-402	4000:5	C200	0.3	0.3	0.3	0.3	0.3
147-502	5000:5	C200	0.3	0.3	0.3	0.3	0.3
147-602	6000:5	C400	0.3	0.3	0.3	0.3	0.3
147-802	8000:5	C400	0.3	0.3	0.3	0.3	0.3
147-103	10000:5	C400	0.3	0.3	0.3	0.3	0.3

# Low Voltage Switchgear Current Transformers

## Models 352M & 352R Window Diameter: 3.19"



Ratio	Continuous Thermal Current Rating Factor	
	Ambient	
	30°C	55°C
100:5-2500:5	1.33	1.0

Window opening to accommodate 3.00" X 0.50" bus.  
Horizontal or Vertical

600 Volts Indoor, 10 kV BIL  
50 - 400 Hz

Outside Dia: 6.00" Depth: 4.50"  
Weight:  
352M-8.0 lbs.  
352R-18.0 lbs.

CATALOG NUMBER	CURRENT RATIO	RELAY CLASS	ANSI METERING CLASS AT 60HZ				
			B0.1	B0.2	B0.5	B0.9	B1.8
352M-101	100:5	-	1.2	2.4	—	—	—
352M-151	150:5	-	1.2	2.4	—	—	—
352M-201	200:5	-	1.2	1.2	—	—	—
352M-251	250:5	-	0.6	1.2	—	—	—
352M-301	300:5	-	0.6	0.6	1.2	—	—
352M-401	400:5	-	0.6	0.6	1.2	—	—
352M-501	500:5	-	0.6	0.6	0.6	—	—
352M-601	600:5	-	0.3	0.6	0.6	1.2	—
352M-751	750:5	-	0.3	0.3	0.6	0.6	—
352M-801	800:5	-	0.3	0.3	0.6	0.6	—
352M-102	1000:5	-	0.3	0.3	0.3	0.6	1.2
352M-122	1200:5	-	0.3	0.3	0.3	0.6	1.2
352M-152	1500:5	-	0.3	0.3	0.3	0.3	0.6
352M-162	1600:5	-	0.3	0.3	0.3	0.3	0.6
352M-202	2000:5	-	0.3	0.3	0.3	0.3	0.6
352M-252	2500:5	-	0.3	0.3	0.3	0.3	0.3

352R-101	100:5	-	1.2	2.4	4.8	—	—
352R-151	150:5	C10	1.2	1.2	2.4	4.8	—
352R-201	200:5	C20	0.6	1.2	2.4	2.4	—
352R-251	250:5	C20	0.6	0.6	1.2	2.4	4.8
352R-301	300:5	C20	0.3	0.6	1.2	1.2	2.4
352R-401	400:5	C50	0.3	0.3	0.6	1.2	2.4
352R-501	500:5	C50	0.3	0.3	0.6	0.6	1.2
352R-601	600:5	C50	0.3	0.3	0.3	0.6	0.6
352R-751	750:5	C20	0.3	0.3	0.3	0.6	0.6
352R-801	800:5	C20	0.3	0.3	0.3	0.6	0.6
352R-102	1000:5	C50	0.3	0.3	0.3	0.3	0.6
352R-122	1200:5	C50	0.3	0.3	0.3	0.3	0.3
352R-152	1500:5	C50	0.3	0.3	0.3	0.3	0.3
352R-162	1600:5	C50	0.3	0.3	0.3	0.3	0.3
352R-202	2000:5	C20	0.3	0.3	0.3	0.3	0.3
352R-252	2500:5	C20	0.3	0.3	0.3	0.3	0.3

## Models 353M & 353R Window Diameter: 3.05"



Ratio	Thermal Rating	
	Ambient	
	30°C	55°C
200:5-4000:5	1.33	1.0

600 Volts Indoor, 10 kV BIL  
50 - 400 Hz

Outside Dia: 7.00" Depth: 3.88"  
Weight:  
353M-12.0 lbs.  
353R-18.0 lbs.

353M-201	200:5	-	0.6	0.6	1.2	2.4	—
353M-251	250:5	-	0.6	0.6	0.6	1.2	2.4
353M-301	300:5	-	0.3	0.6	1.2	1.2	2.4
353M-401	400:5	-	0.3	0.3	0.6	0.6	1.2
353M-501	500:5	-	0.3	0.3	0.3	0.3	0.6
353M-601	600:5	-	0.3	0.3	0.3	0.3	0.3
353M-751	750:5	-	0.3	0.3	0.3	0.3	0.3
353M-801	800:5	-	0.3	0.3	0.3	0.3	0.3
353M-102	1000:5	-	0.3	0.3	0.3	0.3	0.3
353M-122	1200:5	-	0.3	0.3	0.3	0.3	0.3
353M-152	1500:5	-	0.3	0.3	0.3	0.3	0.3
353M-162	1600:5	-	0.3	0.3	0.3	0.3	0.3
353M-202	2000:5	-	0.3	0.3	0.3	0.3	0.3
353M-252	2500:5	-	0.3	0.3	0.3	0.3	0.3
353M-302	3000:5	-	0.3	0.3	0.3	0.3	0.3
353M-322	3200:5	-	0.3	0.3	0.3	0.3	0.3
353M-402	4000:5	-	0.3	0.3	0.3	0.3	0.3

353R-201	200:5	C20	0.6	0.6	1.2	2.4	2.4
353R-251	250:5	C20	0.6	0.6	1.2	1.2	2.4
353R-301	300:5	C20	0.3	0.6	0.6	1.2	1.2
353R-401	400:5	C50	0.3	0.3	0.6	0.6	1.2
353R-501	500:5	C50	0.3	0.3	0.3	0.6	0.6
353R-601	600:5	C50	0.3	0.3	0.3	0.3	0.6
353R-751	750:5	C100	0.3	0.3	0.3	0.3	0.3
353R-801	800:5	C100	0.3	0.3	0.3	0.3	0.3
353R-102	1000:5	C100	0.3	0.3	0.3	0.3	0.3
353R-122	1200:5	C50	0.3	0.3	0.3	0.3	0.3
353R-152	1500:5	C100	0.3	0.3	0.3	0.3	0.3
353R-162	1600:5	C100	0.3	0.3	0.3	0.3	0.3
353R-202	2000:5	C100	0.3	0.3	0.3	0.3	0.3
353R-252	2500:5	C100	0.3	0.3	0.3	0.3	0.3
353R-302	3000:5	C50	0.3	0.3	0.3	0.3	0.3
353R-322	3200:5	C50	0.3	0.3	0.3	0.3	0.3
353R-402	4000:5	C50	0.3	0.3	0.3	0.3	0.3

# Low Voltage Switchgear Current Transformers

## Models 354M & 354R Window Diameter: 3.80"



Ratio	Continuous Thermal Current Rating Factor	
	Ambient	
	30°C	55°C
200:5-4000:5	1.33	1.0

600 Volts Indoor, 10 kV BIL  
50 - 400 Hz

Outside Dia: 7.00"  
Depth: 3.88"  
Weight: 354M- 9.0 lbs.  
354R-16.0 lbs.

CATALOG NUMBER	CURRENT RATIO	RELAY CLASS	ANSI METERING CLASS AT 60HZ				
			B0.1	B0.2	B0.5	B0.9	B1.8
354M-201	200:5	-	0.6	0.6	1.2	2.4	—
354M-251	250:5	-	0.6	0.6	0.6	1.2	2.4
354M-301	300:5	-	0.3	0.6	1.2	1.2	2.4
354M-401	400:5	-	0.3	0.3	0.6	0.6	1.2
354M-501	500:5	-	0.3	0.3	0.3	0.3	0.6
354M-601	600:5	-	0.3	0.3	0.3	0.3	0.3
354M-751	750:5	-	0.3	0.3	0.3	0.3	0.3
354M-801	800:5	-	0.3	0.3	0.3	0.3	0.3
354M-102	1000:5	-	0.3	0.3	0.3	0.3	1.2
354M-122	1200:5	-	0.3	0.3	0.3	0.3	1.2
354M-152	1500:5	-	0.3	0.3	0.3	0.3	0.6
354M-162	1600:5	-	0.3	0.3	0.3	0.3	0.6
354M-202	2000:5	-	0.3	0.3	0.3	0.3	0.6
354M-252	2500:5	-	0.3	0.3	0.3	0.3	0.3
354M-302	3000:5	-	0.3	0.3	0.3	0.3	0.3
354M-322	3200:5	-	0.3	0.3	0.3	0.3	0.3
354M-402	4000:5	-	0.3	0.3	0.3	0.3	0.3

354R-201	200:5	C20	0.6	0.6	1.2	2.4	2.4
354R-251	250:5	C20	0.6	0.6	1.2	1.2	2.4
354R-301	300:5	C20	0.3	0.6	0.6	1.2	1.2
354R-401	400:5	C50	0.3	0.3	0.6	0.6	1.2
354R-501	500:5	C50	0.3	0.3	0.3	0.6	0.6
354R-601	600:5	C50	0.3	0.3	0.3	0.3	0.6
354R-751	750:5	C100	0.3	0.3	0.3	0.3	0.3
354R-801	800:5	C100	0.3	0.3	0.3	0.3	0.3
354R-102	1000:5	C100	0.3	0.3	0.3	0.3	0.3
354R-122	1200:5	C50	0.3	0.3	0.3	0.3	0.3
354R-152	1500:5	C100	0.3	0.3	0.3	0.3	0.3
354R-162	1600:5	C100	0.3	0.3	0.3	0.3	0.3
354R-202	2000:5	C100	0.3	0.3	0.3	0.3	0.3
354R-252	2500:5	C100	0.3	0.3	0.3	0.3	0.3
354R-302	3000:5	C50	0.3	0.3	0.3	0.3	0.3
354R-322	3200:5	C50	0.3	0.3	0.3	0.3	0.3
354R-402	4000:5	C50	0.3	0.3	0.3	0.3	0.3

## Model 197 Window Diameter: 3.12"



Ratio	Continuous Thermal Current Rating Factor	
	Ambient	
	30°C	55°C
400:5-2000:5	1.33	1.0

600 Volts Indoor, 10 kV BIL  
50 - 400 Hz

Height: 5.36"  
Depth: 2.19"  
Width: 4.54"  
Weight: 2.0 lbs.

197-401	400:5	-	0.3	0.3	0.6	1.2	—
197-501	500:5	-	0.3	0.3	0.6	0.6	—
197-601	600:5	-	0.3	0.3	0.3	0.6	1.2
197-751	750:5	-	0.3	0.3	0.3	0.6	1.2
197-801	800:5	-	0.3	0.3	0.3	0.6	1.2
197-102	1000:5	-	0.3	0.3	0.3	0.3	1.2
197-122	1200:5	-	0.3	0.3	0.3	0.3	1.2
197-152	1500:5	-	0.3	0.3	0.3	0.3	1.2
197-162	1600:5	-	0.3	0.3	0.3	0.3	0.6
197-202	2000:5	-	0.3	0.3	0.3	0.3	0.6

## Model 350 Window Diameter: 3.31"



Ratio	Continuous Thermal Current Rating Factor	
	Ambient	
	30°C	55°C
100:5-3000:5	1.33	1.0

600 Volts Indoor, 10 kV BIL  
50 - 400 Hz

Height: 6.93"  
Depth: 1.50"  
Width: 6.93"  
Weight: 2.5 lbs.

350-101	100:5	-	1.2	—	—	—	—
350-151	150:5	-	1.2	—	—	—	—
350-201	200:5	-	1.2	1.2	—	—	—
350-251	250:5	-	0.6	1.2	2.4	—	—
350-301	300:5	-	0.6	0.3	1.2	2.4	—
350-401	400:5	-	0.3	0.3	1.2	1.2	—
350-501	500:5	-	0.3	0.3	0.6	1.2	2.4
350-601	600:5	-	0.3	0.3	0.6	1.2	1.2
350-751	750:5	-	0.3	0.3	0.3	0.6	1.2
350-801	800:5	-	0.3	0.3	0.3	0.6	1.2
350-102	1000:5	-	0.3	0.3	0.3	0.6	0.6
350-122	1200:5	-	0.3	0.3	0.3	0.3	0.6
350-152	1500:5	-	0.3	0.3	0.3	0.3	0.6
350-162	1600:5	-	0.3	0.3	0.3	0.3	—
350-202	2000:5	-	0.3	0.3	0.3	0.3	—
350-252	2500:5	-	0.3	0.3	0.3	0.3	—
350-302	3000:5	-	0.3	0.3	0.3	0.3	—

## Low Voltage Switchgear Current Transformers

### Model 360 Window Diameter: 6.31"



Ratio	Continuous Thermal Current Rating Factor	
	Ambient	
	30°C	55°C
2400:5-5000:5	1.33	1.0

600 Volts Indoor, 10 kV BIL  
50 - 400 Hz  
Height: 9.00" Depth: 1.50"  
Width: 9.00" Weight: 5.5 lbs.



CATALOG NUMBER	CURRENT RATIO	RELAY CLASS	ANSI METERING CLASS AT 60HZ				
			B0.1	B0.2	B0.5	B0.9	B1.8
360-242	2400:5	-	0.3	0.3	0.3	0.3	0.3
360-252	2500:5	-	0.3	0.3	0.3	0.3	0.3
360-302	3000:5	-	0.3	0.3	0.3	0.3	0.3
360-322	3200:5	-	0.3	0.3	0.3	0.3	0.3
360-352	3500:5	-	0.3	0.3	0.3	0.3	0.3
360-402	4000:5	-	0.3	0.3	0.3	0.3	0.3
360-502	5000:5	-	0.3	0.3	0.3	0.3	0.3

### Model 365 Window Diameter: 6.41"



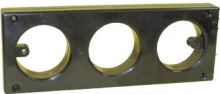
Ratio	Continuous Thermal Current Rating Factor	
	Ambient	
	30°C	55°C
2500:5-6000:5	1.33	1.0

600 Volts Indoor, 10 kV BIL  
50 - 400 Hz  
Height: 10.44" Depth: 1.89"  
Width: 9.93" Weight: 5.5 lbs.



365-252	2500:5	-	0.3	0.3	0.3	0.3	0.3
365-302	3000:5	-	0.3	0.3	0.3	0.3	0.3
365-322	3200:5	-	0.3	0.3	0.3	0.3	0.3
365-352	3500:5	-	0.3	0.3	0.3	0.3	0.3
365-402	4000:5	-	0.3	0.3	0.3	0.3	0.3
365-502	5000:5	-	0.3	0.3	0.3	0.3	0.3
365-602	6000:5	-	0.3	0.3	0.3	0.3	0.3

### Model 3P668 Window Diameter: 3.67"



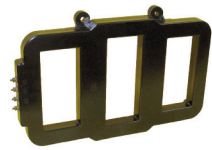
Ratio	Continuous Thermal Current Rating Factor	
	Ambient	
	30°C	55°C
250:5-2000:5	-	-

\*IC Approved (AE-0636)  
600 Volts Indoor, 10 kV BIL  
50 - 400 Hz  
Height: 5.65" Depth: 1.75"  
Width: 15.84" Weight: 7.5 lbs.



3P668-251	250:5	-	0.6	1.2	2.4	-	-
3P668-301	300:5	-	0.6	0.6	1.2	2.4	-
3P668-401	400:5	-	0.3	0.6	1.2	1.2	-
3P668-501	500:5	-	0.3	0.3	0.6	1.2	-
3P668-601	600:5	-	0.3	0.3	0.6	1.2	-
3P668-751	750:5	-	0.3	0.3	0.3	0.6	1.2
3P668-801	800:5	-	0.3	0.3	0.3	0.6	1.2
3P668-102	1000:5	-	0.3	0.3	0.3	0.6	0.6
3P668-122	1200:5	-	0.3	0.3	0.6	1.2	1.2
3P668-152	1500:5	-	0.3	0.3	0.3	0.6	1.2
3P668-162	1600:5	-	0.3	0.3	0.3	0.6	1.2
3P668-202	2000:5	-	0.3	0.3	0.3	0.3	0.6

### Model 3P669 Window Size: 2.87" x 6.30"



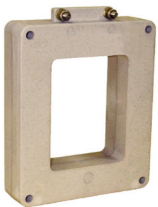
Ratio	Continuous Thermal Current Rating Factor	
	Ambient	
	30°C	55°C
1600:5-4000:5	-	-

600 Volts Indoor, 10 kV BIL  
50 - 400 Hz  
Height: 9.75" Depth: 1.63"  
Width: 16.19" Weight: 5.5 lbs.



3P669-162	1600:5	-	0.3	0.3	0.6	1.2	2.4
3P669-202	2000:5	-	0.3	0.3	0.3	0.6	1.2
3P669-242	2400:5	-	0.3	0.3	0.3	0.6	1.2
3P669-252	2500:5	-	0.3	0.3	0.3	0.6	1.2
3P669-302	3000:5	-	0.3	0.3	0.3	0.6	0.6
3P669-322	3200:5	-	0.3	0.3	0.3	0.3	0.6
3P669-352	3500:5	-	0.3	0.3	0.3	0.3	0.6
3P669-402	4000:5	-	0.3	0.3	0.3	0.3	0.6

### Model 560 Window Size: 3.25" x 4.25"



Ratio	Continuous Thermal Current Rating Factor	
	Ambient	
	30°C	55°C
100:5-4000:5	1.33	1.0

600 Volts Indoor, 10 kV BIL  
50 - 400 Hz  
Height: 7.38" Depth: 1.63"  
Width: 5.75" Weight: 6.0 lbs.



\*IC Approved (AE-0659)

560-101	100:5	-	2.4	-	-	-	-
560-151	150:5	-	1.2	2.4	-	-	-
560-201	200:5	-	1.2	1.2	-	-	-
560-251	250:5 *	-	0.6	1.2	2.4	-	-
560-301	300:5 *	-	0.6	0.6	1.2	-	-
560-401	400:5 *	-	0.6	0.6	1.2	2.4	-
560-501	500:5 *	-	0.3	0.3	0.6	1.2	2.4
560-601	600:5 *	-	0.3	0.3	0.6	1.2	1.2
560-751	750:5 *	-	0.3	0.3	0.3	0.6	1.2
560-801	800:5 *	-	0.3	0.3	0.3	0.6	0.6
560-102	1000:5 *	-	0.3	0.3	0.3	0.6	0.6
560-122	1200:5 *	-	0.3	0.3	0.3	0.3	0.6
560-152	1500:5 *	-	0.3	0.3	0.3	0.3	0.6
560-162	1600:5 *	-	0.3	0.3	0.3	0.3	0.6
560-202	2000:5 *	-	0.3	0.3	0.3	0.3	0.6
560-252	2500:5 *	-	0.3	0.3	0.3	0.3	0.3
560-302	3000:5 *	-	0.3	0.3	0.3	0.3	0.3
560-322	3200:5 *	-	0.3	0.3	0.3	0.3	0.3
560-402	4000:5 *	-	0.3	0.3	0.3	0.3	0.3

# Low Voltage Switchgear Current Transformers

## Model 561

Window Size: 3.25" x 4.25"



Ratio	Continuous Thermal Current Rating Factor	
	Ambient	
	30°C	55°C
100:5-4000:5	1.33	1.0

600 Volts Indoor, 10 kV BIL  
50 - 400 Hz

Height: 7.38" Depth: 2.88"  
Width: 5.75" Weight: 8.0 lbs.

CATALOG NUMBER	CURRENT RATIO	RELAY CLASS	ANSI METERING CLASS AT 60HZ				
			B0.1	B0.2	B0.5	B0.9	B1.8
561-101	100:5	-	2.4	2.4	—	—	—
561-151	150:5	C10	1.2	2.4	—	—	—
561-201	200:5	C10	0.6	1.2	2.4	2.4	—
561-251	250:5	C20	0.6	0.6	1.2	2.4	—
561-301	300:5	C20	0.3	0.6	1.2	1.2	2.4
561-401	400:5	C20	0.3	0.3	0.6	1.2	1.2
561-501	500:5	C20	0.3	0.3	0.3	0.6	0.6
561-601	600:5	C20	0.3	0.3	0.3	0.3	0.6
561-751	750:5	C50	0.3	0.3	0.3	0.3	0.6
561-801	800:5	C50	0.3	0.3	0.3	0.3	0.6
561-102	1000:5	C50	0.3	0.3	0.3	0.3	0.3
561-122	1200:5	C100	0.3	0.3	0.3	0.3	0.3
561-152	1500:5	C50	0.3	0.3	0.3	0.3	0.3
561-162	1600:5	C50	0.3	0.3	0.3	0.3	0.3
561-202	2000:5	C100	0.3	0.3	0.3	0.3	0.3
561-252	2500:5	C100	0.3	0.3	0.3	0.3	0.3
561-302	3000:5	C50	0.3	0.3	0.3	0.3	0.3
561-322	3200:5	C50	0.3	0.3	0.3	0.3	0.3
561-402	4000:5	C100	0.3	0.3	0.3	0.3	0.3

## Model 562

Window Size: 4.00" x 5.38"



Ratio	Continuous Thermal Current Rating Factor	
	Ambient	
	30°C	55°C
2000:5-4000:5	1.33	1.0

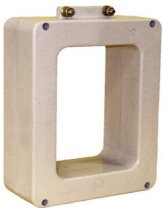
600 Volts Indoor, 10 kV BIL  
50 - 400 Hz

Height: 8.13" Depth: 1.63"  
Width: 6.30" Weight: 8.0 lbs.

562-202	2000:5	-	0.3	0.3	0.3	0.6	0.6
562-252	2500:5	-	0.3	0.3	0.3	0.3	0.6
562-302	3000:5	-	0.3	0.3	0.3	0.3	0.6
562-322	3200:5	-	0.3	0.3	0.3	0.3	0.6
562-352	3500:5	-	0.3	0.3	0.3	0.3	0.3
562-402	4000:5	-	0.3	0.3	0.3	0.3	0.3

## Model 563

Window Size: 4.00" x 5.38"



Ratio	Continuous Thermal Current Rating Factor	
	Ambient	
	30°C	55°C
2000:5-4000:5	1.33	1.0

600 Volts Indoor, 10 kV BIL  
50 - 400 Hz

Height: 8.13" Depth: 2.88"  
Width: 6.30" Weight: 12.0 lbs.

563-202	2000:5	C50	0.3	0.3	0.3	0.3	0.3
563-252	2500:5	C50	0.3	0.3	0.3	0.3	0.3
563-302	3000:5	C20	0.3	0.3	0.3	0.3	0.3
563-322	3200:5	C20	0.3	0.3	0.3	0.3	0.3
563-402	4000:5	C20	0.3	0.3	0.3	0.3	0.3

## Model 576

Window Size: 2.00" x 5.25"



Ratio	Continuous Thermal Current Rating Factor	
	Ambient	
	30°C	55°C
1000:5-3000:5	1.33	1.0
4000:5	0.62	1.0
5000:5-6000:5	0.55	1.0

600 Volts Indoor, 10 kV BIL  
50 - 400 Hz

Height: 8.69" Depth: 1.50"  
Width: 5.00" Weight: 3.5 lbs.

576-102	1000:5	-	0.3	0.3	0.6	-	-
576-122	1200:5	-	0.3	0.3	0.6	-	-
576-152	1500:5	-	0.3	0.3	0.6	-	-
576-162	1600:5	-	0.3	0.3	0.6	-	-
576-202	2000:5	-	0.3	0.3	0.3	-	-
576-252	2500:5	-	0.3	0.3	0.3	-	-
576-302	3000:5	-	0.3	0.3	0.3	-	-
576-402	4000:5	-	0.3	0.3	0.3	-	-
576-502	5000:5	-	0.3	0.3	0.3	-	-
576-602	6000:5	-	0.3	0.3	0.3	-	-

## Medium Voltage Switchgear Current Transformers

### Model 142

Window Diameter: 7.25"



**RU** E93779

\*IC Approved (AE-0650)

Ratio	Continuous Thermal Current Rating Factor	
	Ambient	
	30°C	55°C
50:5-600:5	2.0	2.0
750:5-1000:5	2.0	1.5
1200:5-1500:5	1.5	1.0
1600:5	1.33	1.0
2000:5	2.0	1.5
2500:5	1.5	1.0
3000:5-3500:5	1.0	0.8
4000:5-5000:5	1.33	1.0
6000:5	1.0	0.6

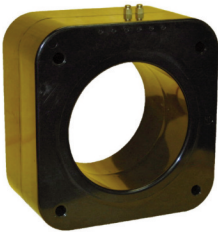
600 Volts Indoor, 10 kV BIL  
50 - 400 Hz

Height: 11.91" Depth: 3.00"  
Width: 11.10". Weight: 31.0 lbs.

CATALOG NUMBER	CURRENT RATIO	RELAY CLASS	ANSI METERING CLASS AT 60HZ				
			B0.1	B0.2	B0.5	B0.9	B1.8
142-500	50:5	-	-	-	-	-	-
142-750	75:5	-	2.4	4.8	-	-	-
142-101	100:5	C10	1.2	2.4	4.8	-	-
142-151	150:5	C10	1.2	1.2	2.4	4.8	-
142-201	200:5 *	C20	0.6	0.6	1.2	2.4	4.8
142-251	250:5 *	C20	0.6	0.6	1.2	1.2	2.4
142-301	300:5 *	C30	0.3	0.3	0.6	1.2	2.4
142-401	400:5 *	C50	0.3	0.3	0.3	0.6	1.2
142-501	500:5 *	C50	0.3	0.3	0.3	0.6	0.6
142-601	600:5 *	C50	0.3	0.3	0.3	0.3	0.6
142-751	750:5 *	C100	0.3	0.3	0.3	0.3	0.3
142-801	800:5 *	C100	0.3	0.3	0.3	0.3	0.3
142-102	1000:5 *	C100	0.3	0.3	0.3	0.3	0.3
142-122	1200:5 *	C100	0.3	0.3	0.3	0.3	0.3
142-152	1500:5 *	C200	0.3	0.3	0.3	0.3	0.3
142-162	1600:5 *	C200	0.3	0.3	0.3	0.3	0.3
142-202	2000:5 *	C200	0.3	0.3	0.3	0.3	0.3
142-252	2500:5 *	C200	0.3	0.3	0.3	0.3	0.3
142-302	3000:5 *	C200	0.3	0.3	0.3	0.3	0.3
142-322	3200:5 *	C200	0.3	0.3	0.3	0.3	0.3
142-352	3500:5 *	C200	0.3	0.3	0.3	0.3	0.3
142-402	4000:5 *	C200	0.3	0.3	0.3	0.3	0.3
142-502	5000:5 *	C200	0.3	0.3	0.3	0.3	0.3
142-602	6000:5 *	C200	0.3	0.3	0.3	0.3	0.3

### Model 143

Window Diameter: 7.31"



**RU** E93779

Ratio	Continuous Thermal Current Rating Factor	
	Ambient	
	30°C	55°C
50:5-500:5	2.0	2.0
600:5-800:5	2.0	1.5
1000:5	1.5	1.33
1200:5-1500:5	1.5	1.0
1600:5-2000:5	1.33	1.0
2500:5-3500:5	1.0	0.8
4000:5-5000:5	1.0	0.6
6000:5	0.8	0.6

600 Volts Indoor, 10 kV BIL  
50 - 400 Hz

Height: 11.91" Depth: 6.00"  
Width: 11.10". Weight: 60.0 lbs.

\*IC Approved (AE-0642)

143-500	50:5	C20	4.8	4.8	-	-	-
143-750	75:5	C20	2.4	2.4	-	-	-
143-101	100:5	C20	1.2	2.4	4.8	4.8	-
143-151	150:5 *	C50	0.6	0.6	1.2	2.4	4.8
143-201	200:5 *	C50	0.3	0.3	0.6	1.2	2.4
143-251	250:5 *	C50	0.3	0.3	0.6	1.2	2.4
143-301	300:5 *	C100	0.3	0.3	0.3	0.6	1.2
143-401	400:5 *	C100	0.3	0.3	0.3	0.3	0.6
143-501	500:5 *	C100	0.3	0.3	0.3	0.6	0.6
143-601	600:5 *	C200	0.3	0.3	0.3	0.3	0.3
143-751	750:5 *	C200	0.3	0.3	0.3	0.3	0.3
143-801	800:5 *	C200	0.3	0.3	0.3	0.3	0.3
143-102	1000:5 *	C200	0.3	0.3	0.3	0.3	0.3
143-122	1200:5 *	C400	0.3	0.3	0.3	0.3	0.3
143-152	1500:5 *	C400	0.3	0.3	0.3	0.3	0.3
143-162	1600:5 *	C400	0.3	0.3	0.3	0.3	0.3
143-202	2000:5 *	C400	0.3	0.3	0.3	0.3	0.3
143-252	2500:5 *	C400	0.3	0.3	0.3	0.3	0.3
143-302	3000:5 *	C800	0.3	0.3	0.3	0.3	0.3
143-322	3200:5 *	C800	0.3	0.3	0.3	0.3	0.3
143-352	3500:5 *	C800	0.3	0.3	0.3	0.3	0.3
143-402	4000:5 *	C800	0.3	0.3	0.3	0.3	0.3
143-502	5000:5 *	C800	0.3	0.3	0.3	0.3	0.3
143-602	6000:5 *	C800	0.3	0.3	0.3	0.3	0.3

### Model 306

Window Diameter: 4.50"



**RU** E93779

Ratio	Continuous Thermal Current Rating Factor	
	Ambient	
	30°C	55°C
200:5-500:5	2.0	2.0
600:5-800:5	2.0	1.5
1000:5	1.5	1.33
1200:5	1.5	1.0
1500:5-2000:5	1.33	1.0
2500:5	1.0	0.8
3000:5-3300:5	1.33	1.0
3500:5	1.0	0.8

600 Volts Indoor, 10 kV BIL  
50 - 400 Hz

Height: 11.42" Depth: 2.38"  
Width: 10.47". Weight: 27.0 lbs.

306-201	200:5	C20	0.6	0.6	1.2	2.4	2.4
306-251	250:5	C20	0.3	0.6	1.2	1.2	2.4
306-301	300:5	C20	0.3	0.6	0.6	1.2	1.2
306-401	400:5	C50	0.3	0.3	0.3	0.6	1.2
306-501	500:5	C50	0.3	0.3	0.3	0.3	0.6
306-601	600:5	C100	0.3	0.3	0.3	0.3	0.6
306-751	750:5	C100	0.3	0.3	0.3	0.3	0.3
306-801	800:5	C100	0.3	0.3	0.3	0.3	0.3
306-102	1000:5	C100	0.3	0.3	0.3	0.3	0.3
306-122	1200:5	C200	0.3	0.3	0.3	0.3	0.3
306-152	1500:5	C200	0.3	0.3	0.3	0.3	0.3
306-162	1600:5	C200	0.3	0.3	0.3	0.3	0.3
306-202	2000:5	C400	0.3	0.3	0.3	0.3	0.3
306-252	2500:5	C400	0.3	0.3	0.3	0.3	0.3
306-302	3000:5	C400	0.3	0.3	0.3	0.3	0.3
306-322	3300:5	C400	0.3	0.3	0.3	0.3	0.3
306-352	3500:5	C400	0.3	0.3	0.3	0.3	0.3

## Medium Voltage Switchgear Current Transformers

### Model 307 Window Diameter: 4.50"



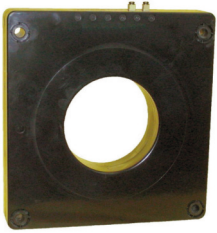
Ratio	Continuous Thermal Current Rating Factor	
	Ambient	
	30°C	55°C
200:5-400:5	2.0	2.0
500:5-800:5	2.0	1.5
1000:5-1200:5	1.5	1.33
1500:5-1600:5	1.33	1.0
2000:5	1.0	1.0
2500:5-3200:5	1.0	0.8
3500:5	1.0	0.6

600 Volts Indoor, 10 kV BIL  
50 - 400 Hz

Height: 11.42" Depth: 4.09"  
Width: 10.47" Weight: 53.0 lbs.

CATALOG NUMBER	CURRENT RATIO	RELAY CLASS	ANSI METERING CLASS AT 60HZ				
			B0.1	B0.2	B0.5	B0.9	B1.8
307-201	200:5	C50	0.3	0.6	0.6	1.2	2.4
307-251	250:5	C50	0.3	0.6	0.6	0.6	1.2
307-301	300:5	C100	0.3	0.3	0.6	0.6	1.2
307-401	400:5	C100	0.3	0.3	0.3	0.6	0.6
307-501	500:5	C100	0.3	0.3	0.3	0.3	0.6
307-601	600:5	C200	0.3	0.3	0.3	0.3	0.3
307-751	750:5	C200	0.3	0.3	0.3	0.3	0.3
307-801	800:5	C200	0.3	0.3	0.3	0.3	0.3
307-102	1000:5	C200	0.3	0.3	0.3	0.3	0.3
307-122	1200:5	C400	0.3	0.3	0.3	0.3	0.3
307-152	1500:5	C400	0.3	0.3	0.3	0.3	0.3
307-162	1600:5	C400	0.3	0.3	0.3	0.3	0.3
307-202	2000:5	C800	0.3	0.3	0.3	0.3	0.3
307-252	2500:5	C800	0.3	0.3	0.3	0.3	0.3
307-302	3000:5	C800	0.3	0.3	0.3	0.3	0.3
307-322	3200:5	C800	0.3	0.3	0.3	0.3	0.3
307-352	3500:5	C800	0.3	0.3	0.3	0.3	0.3

### Model 308 Window Diameter: 5.75"



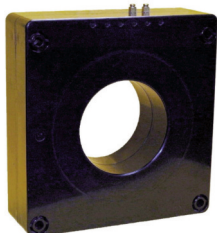
Ratio	Continuous Thermal Current Rating Factor	
	Ambient	
	30°C	55°C
200:5-800:5	2.0	2.0
1000:5-1200:5	2.0	1.5
1500:5-1600:5	1.5	1.33
2000:5-2500:5	1.5	1.0
3000:5	1.33	1.0
3200:5-4000:5	1.0	0.8

600 Volts Indoor, 10 kV BIL  
50 - 400 Hz

Height: 13.39" Depth: 2.40"  
Width: 12.45" Weight: 34.0 lbs.

308-201	200:5	C20	0.6	1.2	2.4	2.4	-
308-251	250:5	C20	0.6	0.6	1.2	2.4	2.4
308-301	300:5	C20	0.3	0.6	1.2	1.2	2.4
308-401	400:5	C50	0.3	0.3	0.6	1.2	2.4
308-501	500:5	C50	0.3	0.3	0.3	0.6	1.2
308-601	600:5	C100	0.3	0.3	0.3	0.3	0.6
308-751	750:5	C100	0.3	0.3	0.3	0.3	0.6
308-801	800:5	C100	0.3	0.3	0.3	0.3	0.3
308-102	1000:5	C100	0.3	0.3	0.3	0.3	0.3
308-122	1200:5	C200	0.3	0.3	0.3	0.3	0.3
308-152	1500:5	C200	0.3	0.3	0.3	0.3	0.3
308-162	1600:5	C200	0.3	0.3	0.3	0.3	0.3
308-202	2000:5	C400	0.3	0.3	0.3	0.3	0.3
308-252	2500:5	C400	0.3	0.3	0.3	0.3	0.3
308-302	3000:5	C400	0.3	0.3	0.3	0.3	0.3
308-322	3200:5	C400	0.3	0.3	0.3	0.3	0.3
308-352	3500:5	C400	0.3	0.3	0.3	0.3	0.3
308-402	4000:5	C400	0.3	0.3	0.3	0.3	0.3

### Model 309 Window Diameter: 5.75"



Ratio	Continuous Thermal Current Rating Factor	
	Ambient	
	30°C	55°C
200:5-600:5	2.0	2.0
750:5-1200:5	2.0	1.5
1500:5	1.5	1.33
1600:5-2000:5	1.5	1.0
2500:5	1.33	1.0
3000:5-4000:5	1.0	0.8

600 Volts Indoor, 10 kV BIL  
50 - 400 Hz

Height: 13.39" Depth: 4.12"  
Width: 12.45" Weight: 62.0 lbs.

309-201	200:5	C50	0.3	0.6	1.2	1.2	2.4
309-251	250:5	C50	0.3	0.3	0.6	1.2	1.2
309-301	300:5	C100	0.3	0.3	0.6	0.6	1.2
309-401	400:5	C100	0.3	0.3	0.3	0.3	0.6
309-501	500:5	C100	0.3	0.3	0.3	0.3	0.6
309-601	600:5	C200	0.3	0.3	0.3	0.3	0.3
309-751	750:5	C200	0.3	0.3	0.3	0.3	0.3
309-801	800:5	C200	0.3	0.3	0.3	0.3	0.3
309-102	1000:5	C200	0.3	0.3	0.3	0.3	0.3
309-122	1200:5	C400	0.3	0.3	0.3	0.3	0.3
309-152	1500:5	C400	0.3	0.3	0.3	0.3	0.3
309-162	1600:5	C400	0.3	0.3	0.3	0.3	0.3
309-202	2000:5	C800	0.3	0.3	0.3	0.3	0.3
309-252	2500:5	C800	0.3	0.3	0.3	0.3	0.3
309-302	3000:5	C800	0.3	0.3	0.3	0.3	0.3
309-322	3200:5	C800	0.3	0.3	0.3	0.3	0.3
309-352	3500:5	C800	0.3	0.3	0.3	0.3	0.3
309-402	4000:5	C800	0.3	0.3	0.3	0.3	0.3

## Medium Voltage Switchgear Current Transformers

### Model 680 Window Diameter: 7.02"



Ratio	Continuous Thermal Current Rating Factor	
	Ambient	
	30°C	55°C
50:5-2000:5	2.0	1.5
2500:5-4000:5	1.33	1.0
5000:5	1.0	0.75

600 Volts Indoor, 10 kV BIL  
50 - 400 Hz

Height: 10.75" Depth: 3.50"  
Width: 10.75" Weight: 34.0 lbs.

\*IC Approved (AE-0644)

CATALOG NUMBER	CURRENT RATIO	RELAY CLASS	ANSI METERING CLASS AT 60HZ				
			B0.1	B0.2	B0.5	B0.9	B1.8
680-500	50:5	—	4.8	4.8	—	—	—
680-750	75:5	C10	1.2	2.4	—	—	—
680-101	100:5	C10	1.2	1.2	4.8	—	—
680-151	150:5 *	C20	0.6	1.2	2.4	4.8	4.8
680-201	200:5 *	C20	0.6	1.2	1.2	2.4	4.8
680-251	250:5 *	C20	0.6	0.6	1.2	2.4	2.4
680-301	300:5 *	C20	0.3	0.6	0.6	1.2	2.4
680-401	400:5 *	C50	0.3	0.3	0.6	0.6	1.2
680-501	500:5 *	C50	0.3	0.3	0.3	0.6	0.6
680-601	600:5 *	C100	0.3	0.3	0.3	0.3	0.6
680-751	750:5 *	C100	0.3	0.3	0.3	0.3	0.6
680-801	800:5 *	C100	0.3	0.3	0.3	0.3	0.3
680-102	1000:5 *	C100	0.3	0.3	0.3	0.3	0.3
680-122	1200:5 *	C200	0.3	0.3	0.3	0.3	0.3
680-152	1500:5 *	C200	0.3	0.3	0.3	0.3	0.3
680-202	2000:5 *	C200	0.3	0.3	0.3	0.3	0.3
680-252	2500:5 *	C200	0.3	0.3	0.3	0.3	0.3
680-302	3000:5 *	C200	0.3	0.3	0.3	0.3	0.3
680-402	4000:5 *	C200	0.3	0.3	0.3	0.3	0.3
680-502	5000:5 *	C200	0.3	0.3	0.3	0.3	0.3

### Model 681MR Window Diameter: 7.02"



Ratio	Continuous Thermal Current Rating Factor	
	Ambient	
	30°C	55°C
600:5MR-2000:5MR	2.0	1.5
3000:5MR-4000:5MR	1.33	1.0

600 Volts Indoor, 10 kV BIL  
50 - 400 Hz

Height: 10.75" Depth: 3.50"  
Width: 10.75" Weight: 34.0 lbs.

681-601MR	600:5MR	C100	0.3	0.3	0.3	-	-
681-122MR	1200:5MR	C200	0.3	0.3	0.3	0.3	0.3
681-202MR	2000:5MR	C200	0.3	0.3	0.3	0.3	0.3
681-302MR	3000:5MR	C200	0.3	0.3	0.3	0.3	0.3
681-402MR	4000:5MR	C200	0.3	0.3	0.3	0.3	0.3

### Model 685 Window Diameter: 7.02"



Ratio	Continuous Thermal Current Rating Factor	
	Ambient	
	30°C	55°C
50:5-2000:5	2.0	1.5
2500:5-4000:5	1.33	1.0

600 Volts Indoor, 10 kV BIL  
50 - 400 Hz

Height: 10.75" Depth: 7.00"  
Width: 10.75" Weight: 64.0 lbs.

\*IC Approved (AE-0646)

685-500	50:5	C10	4.8	4.8	-	-	-
685-750	75:5	C20	2.4	2.4	4.8	-	-
685-101	100:5	C20	1.2	2.4	2.4	4.8	-
685-151	150:5 *	C20	0.6	1.2	1.2	2.4	4.8
685-201	200:5 *	C50	0.6	0.6	1.2	1.2	2.4
685-251	250:5 *	C50	0.3	0.6	0.6	1.2	2.4
685-301	300:5 *	C100	0.3	0.3	0.6	0.6	1.2
685-401	400:5 *	C100	0.3	0.3	0.3	0.6	0.6
685-501	500:5 *	C100	0.3	0.3	0.3	0.3	0.6
685-601	600:5 *	C200	0.3	0.3	0.3	0.3	0.3
685-801	800:5 *	C200	0.3	0.3	0.3	0.3	0.3
685-102	1000:5 *	C200	0.3	0.3	0.3	0.3	0.3
685-122	1200:5 *	C400	0.3	0.3	0.3	0.3	0.3
685-152	1500:5 *	C400	0.3	0.3	0.3	0.3	0.3
685-202	2000:5 *	C400	0.3	0.3	0.3	0.3	0.3
685-252	2500:5 *	C400	0.3	0.3	0.3	0.3	0.3
685-302	3000:5 *	C400	0.3	0.3	0.3	0.3	0.3
685-402	4000:5 *	C400	0.3	0.3	0.3	0.3	0.3

### Model 686MR Window Diameter: 7.02"



Ratio	Continuous Thermal Current Rating Factor	
	Ambient	
	30°C	55°C
600:5MR-2000:5MR	2.0	1.5
3000:5MR-4000:5MR	1.33	1.0

600 Volts Indoor, 10 kV BIL  
50 - 400 Hz

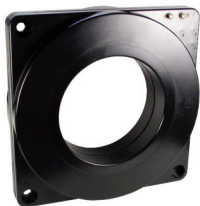
Height: 10.75" Depth: 7.00"  
Width: 10.75" Weight: 64.0 lbs.

686-601MR	600:5MR	C200	0.3	0.3	0.3	0.3	-
686-122MR	1200:5MR	C400	0.3	0.3	0.3	0.3	0.3
686-202MR	2000:5MR	C400	0.3	0.3	0.3	0.3	0.3
686-302MR	3000:5MR	C400	0.3	0.3	0.3	0.3	0.3
686-402MR	4000:5MR	C400	0.3	0.3	0.3	0.3	0.3



## Medium Voltage Switchgear Current Transformers

### Model 682 Window Diameter: 7.62"



Ratio	Continuous Thermal Current Rating Factor	
	Ambient	
	30°C	55°C
50:5-2000:5	2.0	1.5
2500:5-3500:5	1.33	1.0
4000:5	1.0	0.75



E93779

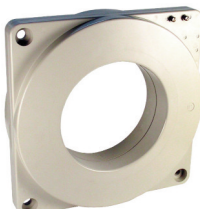
600 Volts Indoor, 10 kV BIL  
50 - 400 Hz

Height: 13.50" Depth: 3.00"  
Width: 13.50" Weight: 30.0 lbs.

\*IC Approved (AE-0646)

CATALOG NUMBER	CURRENT RATIO	RELAY CLASS	ANSI METERING CLASS AT 60HZ				
			B0.1	B0.2	B0.5	B0.9	B1.8
682-500	50:5	C5	4.8	—	—	—	—
682-750	75:5	C10	2.4	4.8	—	—	—
682-101	100:5	C10	2.4	4.8	—	—	—
682-151	150:5*	C20	0.6	1.2	2.4	—	—
682-201	200:5*	C25	0.6	1.2	2.4	—	—
682-251	250:5*	C35	0.6	0.6	1.2	2.4	—
682-301	300:5*	C40	0.6	0.6	1.2	1.2	2.4
682-351	350:5*	C55	0.3	0.6	0.6	1.2	2.4
682-401	400:5*	C60	0.3	0.6	0.6	1.2	1.2
682-501	500:5*	C75	0.3	0.3	0.3	0.6	1.2
682-601	600:5*	C100	0.3	0.3	0.3	0.6	1.2
682-751	750:5*	C100	0.3	0.3	0.3	0.6	0.6
682-801	800:5*	C130	0.3	0.3	0.3	0.6	0.6
682-102	1000:5*	C170	0.3	0.3	0.3	0.3	0.3
682-122	1200:5*	C200	0.3	0.3	0.3	0.3	0.3
682-152	1500:5*	C200	0.3	0.3	0.3	0.3	0.3
682-162	1600:5*	C200	0.3	0.3	0.3	0.3	0.3
682-202	2000:5*	C210	0.3	0.3	0.3	0.3	0.3
682-252	2500:5*	C300	0.3	0.3	0.3	0.3	0.3
682-302	3000:5*	C300	0.3	0.3	0.3	0.3	0.3
682-352	3500:5*	C300	0.3	0.3	0.3	0.3	0.3
682-402	4000:5*	C300	0.3	0.3	0.3	0.3	0.3

### Model 687 Window Diameter: 7.62"



Ratio	Continuous Thermal Current Rating Factor	
	Ambient	
	30°C	55°C
50:5-2000:5	2.0	1.5
2500:5-3500:5	1.33	1.0
4000:5	1.0	0.75



E93779

600 Volts Indoor, 10 kV BIL  
50 - 400 Hz

Height: 13.50" Depth: 3.00"  
Width: 13.50" Weight: 55.0 lbs.

687-500	50:5	C10	4.8	—	—	—	—
687-750	75:5	C15	2.4	4.8	—	—	—
687-101	100:5	C20	2.4	2.4	4.8	—	—
687-151	150:5	C35	1.2	1.2	2.4	4.8	4.8
687-201	200:5	C50	0.6	1.2	1.2	2.4	4.8
687-251	250:5	C70	0.6	0.6	1.2	1.2	2.4
687-301	300:5	C90	0.3	0.6	0.6	1.2	2.4
687-351	350:5	C100	0.3	0.3	0.6	1.2	1.2
687-401	400:5	C120	0.3	0.3	0.6	0.6	1.2
687-501	500:5	C150	0.3	0.3	0.3	0.6	0.6
687-601	600:5	C200	0.3	0.3	0.3	0.6	0.6
687-751	750:5	C230	0.3	0.3	0.3	0.6	0.6
687-801	800:5	C250	0.3	0.3	0.3	0.3	0.3
687-102	1000:5	C300	0.3	0.3	0.3	0.3	0.3
687-122	1200:5	C400	0.3	0.3	0.3	0.3	0.3
687-152	1500:5	C440	0.3	0.3	0.3	0.3	0.3
687-162	1600:5	C450	0.3	0.3	0.3	0.3	0.3
687-202	2000:5	C450	0.3	0.3	0.3	0.3	0.3
687-252	2500:5	C550	0.3	0.3	0.3	0.3	0.3
687-302	3000:5	C800	0.3	0.3	0.3	0.3	0.3
687-352	3500:5	C800	0.3	0.3	0.3	0.3	0.3
687-402	4000:5	C800	0.3	0.3	0.3	0.3	0.3

### Model 780 Window Diameter: 6.50"



Ratio	Continuous Thermal Current Rating Factor	
	Ambient	
	30°C	55°C
50:5-1200:5	2.0	1.5
1500:5-1600:5	1.5	1.33
2000:5	2.0	1.5
2500:5-3500:5	1.5	1.33
4000:5-6000:5	1.0	0.8



E93779

600 Volts Indoor, 10 kV BIL  
50 - 400 Hz

Height: 9.88" Depth: 3.38"  
Width: 9.88" Weight: 30.0 lbs.

\*IC Approved (AE-0656)

780-500	50:5	—	4.8	—	—	—	—
780-750	75:5	C10	4.8	4.8	—	—	—
780-101	100:5	C10	1.2	2.4	4.8	—	—
780-151	150:5*	C20	0.6	1.2	2.4	2.4	4.8
780-201	200:5*	C20	0.6	0.6	1.2	2.4	4.8
780-251	250:5*	C20	0.6	0.6	0.6	1.2	2.4
780-301	300:5*	C20	0.3	0.6	0.6	1.2	2.4
780-401	400:5*	C50	0.3	0.3	0.6	0.6	1.2
780-501	500:5*	C50	0.3	0.3	0.3	0.6	0.6
780-601	600:5*	C100	0.3	0.3	0.3	0.3	0.6
780-751	750:5*	C100	0.3	0.3	0.3	0.3	0.6
780-801	800:5*	C100	0.3	0.3	0.3	0.3	0.3
780-102	1000:5*	C100	0.3	0.3	0.3	0.3	0.3
780-122	1200:5*	C200	0.3	0.3	0.3	0.3	0.3
780-152	1500:5*	C200	0.3	0.3	0.3	0.3	0.3
780-162	1600:5*	C200	0.3	0.3	0.3	0.3	0.3
780-202	2000:5*	C200	0.3	0.3	0.3	0.3	0.3
780-252	2500:5*	C200	0.3	0.3	0.3	0.3	0.3
780-302	3000:5*	C200	0.3	0.3	0.3	0.3	0.3
780-322	3200:5*	C200	0.3	0.3	0.3	0.3	0.3
780-352	3500:5*	C200	0.3	0.3	0.3	0.3	0.3
780-402	4000:5*	C200	0.3	0.3	0.3	0.3	0.3
780-502	5000:5*	C200	0.3	0.3	0.3	0.3	0.3
780-602	6000:5*	C200	0.3	0.3	0.3	0.3	0.3

## Medium Voltage Switchgear Current Transformers

### Model 781MR Window Diameter: 6.50"



Ratio	Continuous Thermal Current Rating Factor	
	Ambient	
	30°C	55°C
600:5MR-2000:5MR	2.0	1.5
3000:5MR-4000:5MR	1.5	1.33

600 Volts Indoor, 10 kV BIL  
50 - 400 Hz

Height: 9.88" Depth: 3.38"  
Width: 9.88" Weight: 30.0 lbs.



CATALOG NUMBER	CURRENT RATIO	RELAY CLASS	ANSI METERING CLASS AT 60HZ				
			B0.1	B0.2	B0.5	B0.9	B1.8
781-601MR	600:5MR	C100	0.3	0.3	0.3	-	-
781-122MR	1200:5MR	C200	0.3	0.3	0.3	0.3	0.3
781-202MR	2000:5MR	C200	0.3	0.3	0.3	0.3	0.3
781-302MR	3000:5MR	C200	0.3	0.3	0.3	0.3	0.3
781-402MR	4000:5MR	C200	0.3	0.3	0.3	0.3	0.3

### Model 785 Window Diameter: 6.50"



Ratio	Continuous Thermal Current Rating Factor	
	Ambient	
	30°C	55°C
50:5-1200:5	2.0	1.5
1500:5-1600:5	1.5	1.33
2000:5	2.0	1.5
2500:5	1.5	1.33
3000:5-4000:5	1.33	1.0

600 Volts Indoor, 10 kV BIL  
50 - 400 Hz

Height: 9.88" Depth: 6.75"  
Width: 9.88" Weight: 58.0 lbs.



\*IC Approved (AE-0657)

785-500	50:5	C10	2.4	4.8	-	-	-
785-750	75:5	C20	1.2	1.2	2.4	-	-
785-101	100:5*	C20	0.6	1.2	2.4	-	-
785-151	150:5*	C50	0.6	0.6	1.2	2.4	-
785-201	200:5*	C50	0.3	0.3	0.6	1.2	2.4
785-251	250:5*	C50	0.3	0.3	0.6	1.2	2.4
785-301	300:5*	C100	0.3	0.3	0.3	0.6	1.2
785-401	400:5*	C100	0.3	0.3	0.3	0.6	1.2
785-501	500:5*	C100	0.3	0.3	0.3	0.3	0.6
785-601	600:5*	C200	0.3	0.3	0.3	0.3	0.6
785-751	750:5*	C200	0.3	0.3	0.3	0.3	0.3
785-801	800:5*	C200	0.3	0.3	0.3	0.3	0.3
785-102	1000:5*	C200	0.3	0.3	0.3	0.3	0.3
785-122	1200:5*	C400	0.3	0.3	0.3	0.3	0.3
785-152	1500:5*	C400	0.3	0.3	0.3	0.3	0.3
785-162	1600:5*	C400	0.3	0.3	0.3	0.3	0.3
785-202	2000:5*	C400	0.3	0.3	0.3	0.3	0.3
785-252	2500:5*	C400	0.3	0.3	0.3	0.3	0.3
785-302	3000:5*	C400	0.3	0.3	0.3	0.3	0.3
785-402	4000:5*	C400	0.3	0.3	0.3	0.3	0.3

### Model 786MR Window Diameter: 6.50"



Ratio	Continuous Thermal Current Rating Factor	
	Ambient	
	30°C	55°C
600:5MR-2000:5MR	2.0	1.5
3000:5MR-4000:5MR	1.33	1.0

600 Volts Indoor, 10 kV BIL  
50 - 400 Hz

Height: 9.88" Depth: 6.75"  
Width: 9.88" Weight: 58.0 lbs.



786-601MR	600:5MR	C200	0.3	0.3	0.3	0.3	-
786-122MR	1200:5MR	C400	0.3	0.3	0.3	0.3	0.3
786-202MR	2000:5MR	C400	0.3	0.3	0.3	0.3	0.3
786-302MR	3000:5MR	C400	0.3	0.3	0.3	0.3	0.3
786-402MR	4000:5MR	C400	0.3	0.3	0.3	0.3	0.3

## Ground Fault Sensors

### Model 143 Window Diameter: 7.31"



Ratio	Continuous Thermal Current Rating Factor	
	Ambient	
	30°C	55°C
50:5-100:5	2.0	2.0

600 Volts Indoor, 10 kV BIL  
50 - 400 Hz

Height: 11.91" Depth: 6.00"  
Width: 11.10" Weight: 60.0 lbs.



CATALOG NUMBER	CURRENT RATIO	RELAY CLASS	ANSI METERING CLASS AT 60HZ				
			B0.1	B0.2	B0.5	B0.9	B1.8
143-500	50:5	C20	4.8	4.8	-	-	-
143-101	100:5	C20	1.2	2.4	-	-	-

## Ground Fault Sensors

### Model 590 Window Size: 4.28" x 11.28"



**RU** E93779

Ratio	Continuous Thermal Current Rating Factor	
	Ambient	
	30°C	55°C
50:5-500:5	2.0	2.0

600 Volts Indoor, 10 kV BIL  
50 - 400 Hz  
Height: 7.48" Depth: 7.35"  
Width: 14.52" Weight: 70.0 lbs.

CATALOG NUMBER	CURRENT RATIO	RELAY CLASS	ANSI METERING CLASS AT 60HZ				
			B0.1	B0.2	B0.5	B0.9	B1.8
590-500	50:5	C15	-	-	-	-	-
590-750	75:5	C25	-	-	-	-	-
590-101	100:5	C35	-	-	-	-	-
590-151	150:5	C50	-	-	-	-	-
590-201	200:5	C70	-	-	-	-	-
590-301	300:5	C100	-	-	-	-	-
590-401	400:5	C150	-	-	-	-	-
590-501	500:5	C180	-	-	-	-	-

### Model 592 Window Size: 5.00" x 14.00"



**RU** E93779

Ratio	Continuous Thermal Current Rating Factor	
	Ambient	
	30°C	55°C
50:5-600:5	2.0	1.5

600 Volts Indoor, 10 kV BIL  
50 - 400 Hz  
Height: 23.00" Depth: 4.00"  
Width: 14.00" Weight: 150.0 lbs.

592-500	50:5	C15	-	-	-	-	-
592-101	100:5	C30	-	-	-	-	-
592-201	200:5	C60	-	-	-	-	-
592-301	300:5	C100	-	-	-	-	-
592-401	400:5	C120	-	-	-	-	-
592-501	500:5	C150	-	-	-	-	-
592-601	600:5	C200	-	-	-	-	-

### Model 593 Window Size: 8.06" x 22.06"



**RU** E93779

Ratio	Continuous Thermal Current Rating Factor	
	Ambient	
	30°C	55°C
50:5-500:5	2.0	2.0

600 Volts Indoor, 10 kV BIL  
50 - 400 Hz  
Height: 27.56" Depth: 5.50"  
Width: 13.58" Weight: 150.0 lbs.

593-500	50:5	C10	-	-	-	-	-
593-750	75:5	C20	-	-	-	-	-
593-101	100:5	C30	-	-	-	-	-
593-151	150:5	C50	-	-	-	-	-
593-201	200:5	C50	-	-	-	-	-
593-301	300:5	C100	-	-	-	-	-
593-401	400:5	C100	-	-	-	-	-
593-501	500:5	C200	-	-	-	-	-

### Model 594 Window Size: 8.06" x 20.06"



**RU** E93779

Ratio	Continuous Thermal Current Rating Factor	
	Ambient	
	30°C	55°C
50:5-500:5	2.0	2.0

600 Volts Indoor, 10 kV BIL  
50 - 400 Hz  
Height: 25.56" Depth: 5.50"  
Width: 13.58" Weight: 150.0 lbs.

594-500	50:5	C10	-	-	-	-	-
594-750	75:5	C20	-	-	-	-	-
594-101	100:5	C30	-	-	-	-	-
594-151	150:5	C50	-	-	-	-	-
594-201	200:5	C50	-	-	-	-	-
594-301	300:5	C100	-	-	-	-	-
594-401	400:5	C100	-	-	-	-	-
594-501	500:5	C200	-	-	-	-	-

### Model HGF2 Window Diameter: 3.25"(83mm)



**RU** E93779

Catalog Number: 8SHT-SD-13529  
Ratio: 2000:1 (50:0.025A)  
600 Volts Indoor, 10 kV BIL  
50 - 60 Hz  
Height: 6.17"(157) Depth: 1.15"(29.2)  
Width: 5.73"(146) Weight: 2.5 lbs.(1.2 kg)

### Model HGF3C Window Diameter: 4.25"(108mm)



**RU** E93779

Catalog Number: 19RT-SD-38137  
Ratio: 2000:1 (50:0.025A)  
**Replaces Multilin P/N HGF3**  
600 Volts Indoor, 10 kV BIL  
50 - 60 Hz  
Height: 6.38"(162) Depth: 1.81"(46)  
Width: 6.00"(152) Weight: 3.0 lbs.(1.4 kg)

### Model HGF5C Window Diameter: 6.31"(160mm)



**RU** E93779

Catalog Number: 125-SD-38591  
Ratio: 2000:1 (50:0.025A)  
**Replaces Multilin P/N HGF5**  
600 Volts Indoor, 10 kV BIL  
50 - 60 Hz  
Height: 8.94"(227) Depth: 1.28"(33)  
Width: 8.50"(216) Weight: 3.0 lbs.(1.4 kg)

### Model HGF8 Window Diameter: 8.13"(207mm)



**RU** E93779

Catalog Number: 140-SD-13526  
Ratio: 2000:1 (50:0.025A)  
**Replaces Multilin P/N HGF8 (0721A13526)**  
600 Volts Indoor, 10 kV BIL  
50 - 60 Hz  
Height: 11.91"(303) Depth: 3.00"(76)  
Width: 11.10"(282) Weight: 22.0 lbs.(10 kg)

## 600 Volt Voltage Transformers

### Model 460 (Unfused)



**RU** E93779

Ratio	Thermal Rating (VA)	
	Ambient	
	30°C	55°C
69.3:120-600:120	150	100

600 Volts Indoor, 10 kV BIL  
60 Hz, Acc. Class  
0.6W, 1.2X  
Height: 3.34"    Depth: 4.73"  
Width: 4.49"    Weight: 7.75 lbs.

These transformers are IEEE C57.13 group 1. Those marked \* are group 2.

CATALOG NUMBER	VOLTAGE RATIO	TURNS RATIO	REC. PRIMARY FUSE RATING
460-069	69.3:120	0.58:1	5.0
460-120	120:120	1:1	4.0
460-208	208:120	1.73:1	2.0
460-240	240:120	2:1	2.0
460-277	277:120	2.31:1	2.0
460-288	288:120	2.4:1	1.5
460-300	300:120	2.5:1	1.5
460-346	346:120	2.88:1	1.5
*460-480	*480:120	4:1	1.0
*460-600	*600:120	5:1	0.75

### Model 460 (Fused)



**RU** E93779

Ratio	Thermal Rating (VA)	
	Ambient	
	30°C	55°C
69.3:120-600:120	150	100

600 Volts Indoor, 10 kV BIL  
60 Hz, Acc. Class  
0.6W, 1.2X  
Height: 4.75"    Depth: 4.57"  
Width: 4.32"    Weight: 7.75 lbs.

These transformers are IEEE C57.13 group 1. Those marked \* are group 2.

PRIMARY FUSES ONLY	PRIMARY AND SECONDARY FUSES			
460-069F	460-069FF	69.3:120	0.58:1	5.0
460-120F	460-120FF	120:120	1:1	4.0
460-208F	460-208FF	208:120	1.73:1	2.0
460-240F	460-240FF	240:120	2:1	2.0
460-277F	460-277FF	277:120	2.31:1	2.0
460-288F	460-288FF	288:120	2.4:1	1.5
460-300F	460-300FF	300:120	2.5:1	1.5
460-346F	460-346FF	346:120	2.88:1	1.5
*460-480F	*460-480FF	*480:120	4:1	1.0
*460-600F	*460-600FF	*600:120	5:1	0.75

### Model 460I (Unfused) (IEC Rated 50 Hz)



**RU** E93779

Ratio	Thermal Rating (VA)	
	Ambient	
	30°C	55°C
110:110-660:110	125	75

720 Volts Indoor, 50Hz  
Acc. Class 10VA, CL0.5  
20VA, CL1.0  
Height: 3.34" (85)    Depth: 4.73" (120)  
Width: 4.49" (114)    Weight: 7.75 lbs. (3.5kg)

460I-110	110:110	1:1	3 amp.
460I-220	220:110	2:1	2 amp.
460I-380	380:110	3.45:1	1 amp
460I-400	400:110	3.64:1	1 amp
460I-416	416:110	3.78:1	1 amp
460I-440	440:110	4:1	1 amp
460I-550	550:110	5:1	0.75 amp.
460I-660	660:110	6:1	0.50 amp.

Above part numbers are available with 100 volt secondaries.

### Model 475



**RU** E93779

Ratio	Thermal Rating (VA)	
	Ambient	
	30°C	55°C
69.3:120-600:120	300	200

600 Volts Indoor, 10 kV BIL  
60 Hz, Acc. Class 0.3W, 0.6X,  
1.2M AT 60Hz  
Height: 6.50" W/COV    Depth: 4.38"  
Width: 4.75"    Weight: 12.5 lbs.

These transformers are IEEE C57.13 group 1. Those marked \* are group 2.

NOT FUSED	PRIMARY FUSES ONLY	PRIMARY & SECONDARY FUSES			
475-069	475-069F	475-069FF	69.3:120	0.58:1	10.0
475-120	475-120F	475-120FF	120:120	1:1	6.0
475-208	475-208F	475-208FF	208:120	1.73:1	4.0
475-240	475-240F	475-240FF	240:120	2:1	4.0
475-277	475-277F	475-277FF	277:120	2.31:1	4.0
475-288	475-288F	475-288FF	288:120	2.4:1	3.0
475-300	475-300F	475-300FF	300:120	2.5:1	3.0
475-346	475-346F	475-346FF	346:120	2.88:1	3.0
*475-480	*475-480F	*475-480FF	*480:120	4:1	2.0
*475-600	*475-600F	*475-600FF	*600:120	5:1	1.5

# 600 Volt Voltage Transformers

## Model 475I (IEC Rated 50 Hz)



**RU** E93779

Ratio	Thermal Rating (VA)	
	Ambient	
	30°C	55°C
110:110-660:110	225	150

720 Volts Indoor, 50 Hz  
Acc. Class 10VA, CL0.2  
20VA, CL0.5

Height: 6.50" W/COV Depth: 4.38"  
Width: 4.75" Weight: 12.5 lbs.  
(5.7 kg)

CATALOG NUMBER			VOLTAGE RATING	TURNS RATIO	REC. PRIMARY FUSE RATING
NOT FUSED	PRIMARY FUSES ONLY	PRIMARY AND SECONDARY FUSES			
475I-110	475I-110F	475I-110FF	110:110	1:1	4 amp.
475I-220	475I-220F	475I-220FF	220:110	2:1	3 amp.
475I-380	475I-380F	475I-380FF	380:110	3.45:1	2 amp.
475I-400	475I-400F	475I-400FF	400:110	3.64:1	2 amp.
475I-416	475I-416F	475I-416FF	416:110	3.78:1	2 amp.
475I-440	475I-440F	475I-440FF	440:110	4:1	2 amp.
475I-550	475I-550F	475I-550FF	550:110	5:1	1 amp.
475I-660	475I-660F	475I-660FF	660:110	6:1	1 amp.

## Model 450



**RU** E93779

Ratio	Thermal Rating (VA)	
	Ambient	
	30°C	55°C
69.3:120-600:120	750	500

600 Volts Indoor, 10 kV BIL  
60 Hz, Acc. Class 0.3W, X, M and Y;  
1.2Z  
Those marked \*\* are 0.3W,  
0.6 X, M & Y

Height: 6.50" W/COV Depth: 4.38"  
Width: 4.75" Weight: 25 lbs.

NOT FUSED	PRIMARY FUSES ONLY	PRIMARY AND SECONDARY FUSES			
**450-069	450-069F	450-069FF	69.3:120	0.58:1	15.0
**450-120	450-120F	450-120FF	120:120	1:1	10.0
450-208	450-208F	450-208FF	208:120	1.73:1	8.0
450-240	450-240F	450-240FF	240:120	2:1	8.0
450-277	450-277F	450-277FF	277:120	2.31:1	8.0
450-288	450-288F	450-288FF	288:120	2.4:1	6.0
450-300	450-300F	450-300FF	300:120	2.5:1	6.0
450-346	450-346F	450-346FF	346:120	2.88:1	5.0
*450-480	*450-480F	*450-480FF	*480:120	4:1	4.0
*450-600	*450-600F	*450-600FF	*600:120	5:1	3.0

## Model 450I (IEC Rated 50 Hz)



**RU** E93779

Ratio	Thermal Rating (VA)	
	Ambient	
	30°C	55°C
69.3:120-600:120	550	350

720 Volts Indoor, 0.72kV  
50 Hz, Acc. Class 40VA, CL0.2  
70VA, CL0.5

Height: 6.50" W/COV (161)  
Width: 4.75" (121)  
Depth: 4.38" (111)  
Weight: 25 lbs. (11.4 kg)

NOT FUSED	PRIMARY FUSES ONLY	PRIMARY AND SECONDARY FUSES			
450I-110	450I-110F	450I-110FF	110:110	1:1	10 amp.
450I-220	450I-220F	450I-220FF	220:110	2:1	6 amp.
450I-380	450I-380F	450I-380FF	380:110	3.45:1	3 amp.
450I-400	450I-400F	450I-400FF	400:110	3.64:1	3 amp.
450I-416	450I-416F	450I-416FF	416:110	3.78:1	3 amp.
450I-440	450I-440F	450I-440FF	440:110	4:1	3 amp.
450I-550	450I-550F	450I-550FF	550:110	5:1	2 amp.
450I-660	450I-660F	450I-660FF	660:110	6:1	2 amp.

## Model 2VT460

### For Open Delta Connection



**RU** E93779

Ratio	Thermal Rating (VA)	
	Ambient	
	30°C	55°C
69.3:120-600:120	150	100

600 Volts Indoor, 10 kV BIL  
60 Hz, Acc. Class 0.6W, 1.2X

Height: 5.38" Depth: 3.75"  
Width: 7.68" Weight: 15.5 lbs.

PRIMARY FUSES ONLY	PRIMARY AND SECONDARY FUSES			
2VT460-069F	2VT460-069FF	69.3:120	0.58:1	5.0
2VT460-120F	2VT460-120FF	120:120	1:1	4.0
2VT460-208F	2VT460-208FF	208:120	1.73:1	2.0
2VT460-240F	2VT460-240FF	240:120	2:1	2.0
2VT460-288F	2VT460-288FF	288:120	2.4:1	1.5
2VT460-300F	2VT460-300FF	300:120	2.5:1	1.5
2VT460-480F	2VT460-480FF	480:120	4:1	1.0
2VT460-600F	2VT460-600FF	600:120	5:1	0.75

## 600 Volt Voltage Transformers

### Model 3VTN460 For Line to Neutral Connection



**RJ** E93779

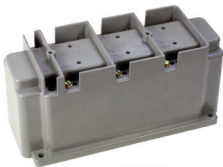
Ratio	Thermal Rating (VA)	
	Ambient	
	30°C	55°C
69.3:120-346:120	150	100

600 Volts Indoor, 10 kV BIL  
60 Hz, Acc.  
Class 0.6, 1.2 X

Height: 4.65"    Depth: 4.75"  
Width: 10.25"    Weight: 24 lbs.

CATALOG NUMBER		LINE TO NEUTRAL VOLTAGE RATING	TURNS RATIO	REC. PRIMARY FUSE RATING
PRIMARY FUSES ONLY	PRIMARY AND SECONDARY FUSES			
3VTN460-069F	3VTN460-069FF	69.3:120	0.58:1	5.0
3VTN460-120F	3VTN460-120FF	120:120	1:1	4.0
3VTN460-240F	3VTN460-240FF	240:120	2:1	2.0
3VTN460-277F	3VTN460-277FF	277:120	2.31:1	2.0
3VTN460-300F	3VTN460-300FF	300:120	2.5:1	1.5
3VTN460-346F	3VTN460-346FF	346:120	2.88:1	1.5

### Model 3VTL460 For Line to Line Connection



**RJ** E93779

Ratio	Thermal Factor (VA)	
	Ambient	
	30°C	55°C
120:120-600:120	150	100

600 Volts Indoor, 10 kV BIL  
60 Hz, Acc.  
Class 0.6W, 1.2 X

Height: 4.65"    Depth: 4.75"  
Width: 10.25"    Weight: 24 lbs.

3VTL460-120	120:120	1:1	4.0
3VTL460-208	208:120	1.73:1	2.0
3VTL460-240	240:120	2:1	2.0
3VTL460-288	288:120	2.4:1	1.5
3VTL460-480	480:120	4:1	1.0
3VTL460-600	600:120	5:1	0.75

## 5 kV thru 34.5 kV Current Transformers

### Model CTWH3-60-T100 5 kV



**RJ** E145172

Ratio	Continuous Thermal Current Rating Factor	
	Ambient	
	30°C	55°C
5:5-200:5	1.50	1.33
250:5	1.10	0.85
300:5-800:5	1.50	1.33
1000:5-1200:5	1.10	0.85

5.6 kV, 60 kV BIL  
50-400 Hz.

Height: 7.25"    Depth: 5.63"  
Width: 15.00"    Weight: 41 lbs.

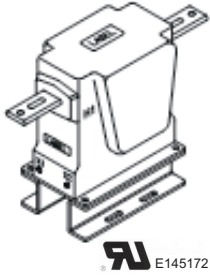
BAR SIZES		
PRIMARY CURRENT	DIMENSIONS (inches)	
	THICKNESS	WIDTH
5 TO 250A	0.25	1.50
300 TO 1200A	0.38	2.00

CATALOG NUMBER	CURRENT RATIO	RELAY CLASS	ANSI METERING CLASS AT 60HZ					* THERMAL CURRENT RATING 1 SECOND RMS AMPS
			B0.1	B0.2	B0.5	B0.9	B1.8	
CTWH3-60-T100-050	5:5	T100	0.3	0.3	0.3	0.3	0.3	470
CTWH3-60-T100-100	10:5	T100	0.3	0.3	0.3	0.3	0.3	900
CTWH3-60-T100-150	15:5	T100	0.3	0.3	0.3	0.3	0.3	1600
CTWH3-60-T100-200	20:5	T100	0.3	0.3	0.3	0.3	0.3	1900
CTWH3-60-T100-250	25:5	T100	0.3	0.3	0.3	0.3	0.3	2600
CTWH3-60-T100-300	30:5	T100	0.3	0.3	0.3	0.3	0.3	2900
CTWH3-60-T100-400	40:5	T100	0.3	0.3	0.3	0.3	0.3	3800
CTWH3-60-T100-500	50:5	T100	0.3	0.3	0.3	0.3	0.3	4700
CTWH3-60-T100-750	75:5	T100	0.3	0.3	0.3	0.3	0.3	5900
CTWH3-60-T100-101	100:5	T100	0.3	0.3	0.3	0.3	0.3	8600
CTWH3-60-T100-151	150:5	T100	0.3	0.3	0.3	0.3	0.3	12900
CTWH3-60-T100-201	200:5	T100	0.3	0.3	0.3	0.3	0.3	17200
CTWH3-60-T100-251	250:5	T100	0.3	0.3	0.3	0.3	0.3	17200
CTWH3-60-T100-301	300:5	T100	0.3	0.3	0.3	0.3	0.3	34500
CTWH3-60-T100-401	400:5	T100	0.3	0.3	0.3	0.3	0.3	34500
CTWH3-60-T100-601	600:5	T100	0.3	0.3	0.3	0.3	0.3	66200
CTWH3-60-T100-801	800:5	T100	0.3	0.3	0.3	0.3	0.3	66200
CTWH3-60-T100-102	1000:5	T100	0.3	0.3	0.3	0.3	0.3	66200
CTWH3-60-T100-122	1200:5	T100	0.3	0.3	0.3	0.3	0.3	66200

\* With a burden of B0.1 or greater connected to the secondary.

# 5 kV thru 34.5 kV Current Transformers

## Model CTWH4-75-T100 8.7 kV



Ratio	Continuous Thermal Current Rating Factor	
	Ambient	
	30°C	55°C
5:5-200:5	1.50	1.33
250:5-1000:5	1.10	0.85
1200:5	1.0	0.75

9.52 kV, 75 kV BIL  
50-400 Hz.      Height: 9.50"      Depth: 5.88"  
Width: 16.00"      Weight: 42 lbs.

BAR SIZES		
PRIMARY CURRENT	DIMENSIONS (inches)	
	THICKNESS	WIDTH
5 TO 200A	0.25	1.50
250 TO 1200A	0.38	2.00

CATALOG NUMBER	CURRENT RATIO	RELAY CLASS	ANSI METERING CLASS AT 60HZ					* THERMAL CURRENT RATING 1 SECOND RMS AMPS
			B0.1	B0.2	B0.5	B0.9	B1.8	
CTWH4-75-T100-050	5:5	T100	0.3	0.3	0.3	0.3	0.3	470
CTWH4-75-T100-100	10:5	T100	0.3	0.3	0.3	0.3	0.3	900
CTWH4-75-T100-150	15:5	T100	0.3	0.3	0.3	0.3	0.3	1600
CTWH4-75-T100-200	20:5	T100	0.3	0.3	0.3	0.3	0.3	1900
CTWH4-75-T100-250	25:5	T100	0.3	0.3	0.3	0.3	0.3	2600
CTWH4-75-T100-300	30:5	T100	0.3	0.3	0.3	0.3	0.3	2900
CTWH4-75-T100-400	40:5	T100	0.3	0.3	0.3	0.3	0.3	3800
CTWH4-75-T100-500	50:5	T100	0.3	0.3	0.3	0.3	0.3	4700
CTWH4-75-T100-750	75:5	T100	0.3	0.3	0.3	0.3	0.3	5900
CTWH4-75-T100-101	100:5	T100	0.3	0.3	0.3	0.3	0.3	8600
CTWH4-75-T100-151	150:5	T100	0.3	0.3	0.3	0.3	0.3	12900
CTWH4-75-T100-201	200:5	T100	0.3	0.3	0.3	0.3	0.3	17200
CTWH4-75-T100-251	250:5	T100	0.3	0.3	0.3	0.3	0.3	17200
CTWH4-75-T100-301	300:5	T100	0.3	0.3	0.3	0.3	0.3	34500
CTWH4-75-T100-401	400:5	T100	0.3	0.3	0.3	0.3	0.3	34500
CTWH4-75-T100-601	600:5	T100	0.3	0.3	0.3	0.3	0.3	66200
CTWH4-75-T100-801	800:5	T100	0.3	0.3	0.3	0.3	0.3	66200
CTWH4-75-T100-102	1000:5	T100	0.3	0.3	0.3	0.3	0.3	66200
CTWH4-75-T100-122	1200:5	T100	0.3	0.3	0.3	0.3	0.3	66200

\*With a burden of B0.1 or greater connected to the secondary.

## Model CTWH5-B-110-T200\*\* 15 kV



Ratio	Continuous Thermal Current Rating Factor	
	Ambient	
	30°C	55°C
5:5-600:5	1.50	1.33
800:5-1200:5	1.0	0.8

15.5 kV, 110 kV BIL  
50-400 Hz.      Height: 10.31"      Depth: 7.00"  
Width: 23.00"      Weight: 76 lbs.

BAR SIZES		
PRIMARY CURRENT	DIMENSIONS (inches)	
	THICKNESS	WIDTH
5 TO 200A	0.25	1.50
300 TO 1200A	0.38	2.00

\*\*\* Catalog Number

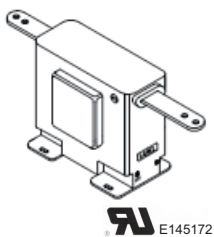
CTWH5-B-110-T200-050	5:5	T200	0.3	0.3	0.3	0.3	0.3	470
CTWH5-B-110-T200-100	*10:5	T200	0.3	0.3	0.3	0.3	0.3	950
CTWH5-B-110-T200-150	*15:5	T200	0.3	0.3	0.3	0.3	0.3	1440
CTWH5-B-110-T200-200	*20:5	T200	0.3	0.3	0.3	0.3	0.3	1840
CTWH5-B-110-T200-250	*25:5	T200	0.3	0.3	0.3	0.3	0.3	2670
CTWH5-B-110-T200-300	*30:5	T200	0.3	0.3	0.3	0.3	0.3	2920
CTWH5-B-110-T200-400	*40:5	T200	0.3	0.3	0.3	0.3	0.3	3700
CTWH5-B-110-T200-500	*50:5	T200	0.3	0.3	0.3	0.3	0.3	4700
CTWH5-B-110-T200-750	*75:5	T200	0.3	0.3	0.3	0.3	0.3	7575
CTWH5-B-110-T200-101	*100:5	T200	0.3	0.3	0.3	0.3	0.3	12940
CTWH5-B-110-T200-151	*150:5	T200	0.3	0.3	0.3	0.3	0.3	14375
CTWH5-B-110-T200-201	*200:5	T200	0.3	0.3	0.3	0.3	0.3	25875
CTWH5-B-110-T200-301	*300:5	T200	0.3	0.3	0.3	0.3	0.3	27520
CTWH5-B-110-T200-401	*400:5	T200	0.3	0.3	0.3	0.3	0.3	40350
CTWH5-B-110-T200-601	*600:5	T200	0.3	0.3	0.3	0.3	0.3	66225
CTWH5-B-110-T200-801	*800:5	T200	0.3	0.3	0.3	0.3	0.3	66225
CTWH5-B-110-T200-102	*1000:5	T200	0.3	0.3	0.3	0.3	0.3	66225
CTWH5-B-110-T200-122	*1200:5	T200	0.3	0.3	0.3	0.3	0.3	66225

\*All primary voltages marked with an (\*) are approved for revenue metering in Canada by Industry Canada, Approval No. AE-0640 Rev.1.

\*\*Replaces Model CTWH5-110-T200. A test card is provided with each unit.

\*\*\*With a burden of 0.35 Ohms or greater connected to the secondary.

## Model CTWH5-S-110 15 kV



Ratio	Continuous Thermal Current Rating Factor	
	Ambient	
	30°C	55°C
5:5-600:5	1.50	1.33
800:5-1200:5	1.0	0.8

15.5 kV, 110 kV BIL  
50-400 Hz.      Height: 10.31"      Depth: 7.00"  
Width: 21.62"      Weight: 75 lbs.

BAR SIZES		
PRIMARY CURRENT	DIMENSIONS (inches)	
	THICKNESS	WIDTH
40 TO 150A	0.25	2.00
200 TO 1200A	0.38	2.00

\* Thermal Current Rating 1 second RMS amps

\*\* Thermal Current Rating 1 Second RMS amps

\*\*\* Catalog Number

CTWH5-S-110-400	40:5	T20	1.2	-	-	-	-	*49000**10200
CTWH5-S-110-500	50:5	T30	0.6	2.4	-	-	-	*49000**12500
CTWH5-S-110-750	75:5	T45	0.6	1.2	2.4	-	-	*49000**11800
CTWH5-S-110-101	100:5	T60	0.6	0.6	1.2	2.4	-	*49000**15900
CTWH5-S-110-151	150:5	T100	0.3	0.3	0.6	1.2	2.4	*49000**23900
CTWH5-S-110-201	200:5	T120	0.3	0.3	0.3	0.6	1.2	*49000**30000
CTWH5-S-110-301	300:5	T100	0.3	0.3	0.6	1.2	2.4	*66200**47800
CTWH5-S-110-401	400:5	T80	0.3	0.3	0.3	0.3	0.6	*66200**51200
CTWH5-S-110-601	600:5	T100	0.3	0.3	0.3	0.3	0.3	*66200**60000
CTWH5-S-110-801	800:5	T120	0.3	0.3	0.3	0.3	0.3	*66200**60000
CTWH5-S-110-102	1000:5	T150	0.3	0.3	0.3	0.3	0.3	*66200**66200
CTWH5-S-110-122	1200:5	T200	0.3	0.3	0.3	0.3	0.3	*66200**66200

\*With a burden of B0.2 or greater connected to the secondary.

\*\*With secondary short circuited.

\*\*\*A test card is provided with each unit.

# 5 kV thru 34.5 kV Current Transformers

## Model CTW6-125-T100/200 25kV



Ratio	Thermal Rating	
	Ambient	
	30°C	55°C
10:5-600:5	1.50	1.33

25.5 kV, 125 kV BIL  
50-400 Hz.

Height: 13.60"    Depth: 8.50"  
Width: 13.75"    Weight:  
T100: 95 lbs.  
T200: 115 lbs.

CATALOG NUMBER	CURRENT RATIO	RELAY CLASS	ANSI METERING CLASS AT 60Hz					THERMAL CURRENT RATING 1 SECOND RMS AMPS
			B0.1	B0.2	B0.5	B0.9	B1.8	
CTW6-125-T100-100	10:5	T100	0.3	0.3	0.3	0.3	0.6	900*
CTW6-125-T100-150	15:5	T100	0.3	0.3	0.3	0.3	0.6	1700*
CTW6-125-T100-250	25:5	T100	0.3	0.3	0.3	0.3	0.6	2700*
CTW6-125-T100-500	50:5	T100	0.3	0.3	0.3	0.3	0.6	4700*
CTW6-125-T100-750	75:5	T100	0.3	0.3	0.3	0.3	0.6	12900*
CTW6-125-T100-101	100:5	T100	0.3	0.3	0.3	0.3	0.6	12900*
CTW6-125-T100-151	150:5	T100	0.3	0.3	0.3	0.3	0.6	23000*
CTW6-125-T100-201	200:5	T100	0.3	0.3	0.3	0.3	0.6	28200*
CTW6-125-T100-301	300:5	T100	0.3	0.3	0.3	0.3	0.6	48900*
CTW6-125-T100-401	400:5	T100	0.3	0.3	0.3	0.3	0.6	66200*
CTW6-125-T100-601	600:5	T100	0.3	0.3	0.3	0.3	0.6	66200*

\*With a burden of B0.2 or greater connected to the secondary.

CTW6-125-T200-100	10:5	T200	0.3	0.3	0.3	0.3	0.3	900**
CTW6-125-T200-150	15:5	T200	0.3	0.3	0.3	0.3	0.3	1700**
CTW6-125-T200-250	25:5	T200	0.3	0.3	0.3	0.3	0.3	2700**
CTW6-125-T200-500	50:5	T200	0.3	0.3	0.3	0.3	0.3	4700**
CTW6-125-T200-750	75:5	T200	0.3	0.3	0.3	0.3	0.3	12900**
CTW6-125-T200-101	100:5	T200	0.3	0.3	0.3	0.3	0.3	12900**
CTW6-125-T200-151	150:5	T200	0.3	0.3	0.3	0.3	0.3	23000**
CTW6-125-T200-201	200:5	T200	0.3	0.3	0.3	0.3	0.3	28200**
CTW6-125-T200-301	300:5	T200	0.3	0.3	0.3	0.3	0.3	48900**
CTW6-125-T200-401	400:5	T200	0.3	0.3	0.3	0.3	0.3	66200**
CTW6-125-T200-601	600:5	T200	0.3	0.3	0.3	0.3	0.3	66200**

\*\*With a burden of B0.5 or greater connected to the secondary.

## Model CTWH6-125-T200 25 kV



Ratio	Thermal Rating	
	Ambient	
	30°C	55°C
800:5-1500:5	1.50	1.33
2000:5	1.33	1.0
2500:5-3000:5	1.0	0.85

25.5 kV, 125 kV BIL  
50-400 Hz.

Height: 16.88"    Depth: 9.50"  
Width: 16.00"    Weight: 150 lbs.

CTWH6-125-T200-801-***	800:5	T200	0.3	0.3	0.3	0.3	0.3	87000*
CTWH6-125-T200-200-**	1000:5	T200	0.3	0.3	0.3	0.3	0.3	13300*
CTWH6-125-T200-122-**	1200:5	T200	0.3	0.3	0.3	0.3	0.3	13300*
CTWH6-125-T200-152-**	1500:5	T200	0.3	0.3	0.3	0.3	0.3	266000*
CTWH6-125-T200-202-**	2000:5	T200	0.3	0.3	0.3	0.3	0.3	266000*
CTWH6-125-T200-252-**	2500:5	T200	0.3	0.3	0.3	0.3	0.3	266000*
CTWH6-125-T200-302-**	3000:5	T200	0.3	0.3	0.3	0.3	0.3	358000*

\*With a burden of B0.1 or greater connected to the secondary.

\*\*Specify primary bus arrangement number (1 through 8).

## Model CTW7-150-T100/200 34.5 kV



Ratio	Continuous Thermal Current Rating Factor	
	Ambient	
	30°C	55°C
10:5-600:5	1.50	1.33

36.5 kV, 150 kV BIL  
50-400 Hz.

Height: 15.10"    Depth: 8.50"  
Width: 13.75"    Weight:  
T100: 125 lbs.  
T200: 155 lbs.

CTW7-150-T100-100	10:5	T100	0.3	0.3	0.3	0.3	0.6	900*
CTW7-150-T100-150	15:5	T100	0.3	0.3	0.3	0.3	0.6	1700*
CTW7-150-T100-250	25:5	T100	0.3	0.3	0.3	0.3	0.6	2700*
CTW7-150-T100-500	50:5	T100	0.3	0.3	0.3	0.3	0.6	4700*
CTW7-150-T100-750	75:5	T100	0.3	0.3	0.3	0.3	0.6	12900*
CTW7-150-T100-101	100:5	T100	0.3	0.3	0.3	0.3	0.6	12900*
CTW7-150-T100-151	150:5	T100	0.3	0.3	0.3	0.3	0.6	23000*
CTW7-150-T100-201	200:5	T100	0.3	0.3	0.3	0.3	0.6	28200*
CTW7-150-T100-301	300:5	T100	0.3	0.3	0.3	0.3	0.6	48900*
CTW7-150-T100-401	400:5	T100	0.3	0.3	0.3	0.3	0.6	66200*
CTW7-150-T100-601	600:5	T100	0.3	0.3	0.3	0.3	0.6	66200*

\*With a burden of B0.2 or greater connected to the secondary.

CTW7-150-T200-100	10:5	T200	0.3	0.3	0.3	0.3	0.3	900**
CTW7-150-T200-150	15:5	T200	0.3	0.3	0.3	0.3	0.3	1700**
CTW7-150-T200-250	25:5	T200	0.3	0.3	0.3	0.3	0.3	2700**
CTW7-150-T200-500	50:5	T200	0.3	0.3	0.3	0.3	0.3	4700**
CTW7-150-T200-750	75:5	T200	0.3	0.3	0.3	0.3	0.3	12900**
CTW7-150-T200-101	100:5	T200	0.3	0.3	0.3	0.3	0.3	12900**
CTW7-150-T200-151	150:5	T200	0.3	0.3	0.3	0.3	0.3	23000**
CTW7-150-T200-201	200:5	T200	0.3	0.3	0.3	0.3	0.3	28200**
CTW7-150-T200-301	300:5	T200	0.3	0.3	0.3	0.3	0.3	48900**
CTW7-150-T200-401	400:5	T200	0.3	0.3	0.3	0.3	0.3	66200**
CTW7-150-T200-601	600:5	T200	0.3	0.3	0.3	0.3	0.3	66200**

\*\*With a burden of B0.5 or greater connected to the secondary.



## 5 kV thru 34.5 kV Current Transformers

### Model CTWH7-150-T200

34.5 kV



**RU** E145172

Ratio	Thermal Rating	
	Ambient	
	30°C	55°C
800:5-1500:5	1.50	1.33
2000:5	1.33	1.0
2500:5-3000:5	1.0	0.85

36.5 kV, 150 kV BIL  
50-400 Hz.

Height: 18.38" Depth: 9.50"  
Width: 16.00" Weight: 180 lbs.

CATALOG NUMBER	CURRENT RATIO	RELAY CLASS	ANSI METERING CLASS AT 60HZ					* THERMAL CURRENT RATING 1 SECOND RMS AMPS
			B0.1	B0.2	B0.5	B0.9	B1.8	
CTWH7-150-T200-801-**	800:5	T200	0.3	0.3	0.3	0.3	0.3	87000
CTWH7-150-T200-200-**	1000:5	T200	0.3	0.3	0.3	0.3	0.3	133000
CTWH7-150-T200-122-**	1200:5	T200	0.3	0.3	0.3	0.3	0.3	133000
CTWH7-150-T200-152-**	1500:5	T200	0.3	0.3	0.3	0.3	0.3	266000
CTWH7-150-T200-202-**	2000:5	T200	0.3	0.3	0.3	0.3	0.3	266000
CTWH7-150-T200-252-**	2500:5	T200	0.3	0.3	0.3	0.3	0.3	266000
CTWH7-150-T200-302-**	3000:5	T200	0.3	0.3	0.3	0.3	0.3	358000

\*With a burden of B0.1 or greater connected to the secondary.

\*\*Specify primary bus arrangement number (1 through 8).

**Note:** 200 kV BIL is available for all ratios  
Except 3000:5.

## 5kV thru 34.5kV Voltage Transformers

### Models PTG3-1-60 & PTG3-2-60

5kV



**RU** E145172

Ratio	Thermal Rating	
	Ambient	
	30°C	55°C
20:1-40:1	750 VA	500 VA

Accuracy Class:  
0.3 WXY 1.2 Z at 100% rated  
voltage with 120V based ANSI  
burden.

5.6 kV, 60 kV BIL  
60 Hz.

Height: 6.61" Depth: 6.38"  
Unfused: 6.61" Weight: 34.0 lbs.  
Fused: 7.07" Unfused  
Width: 10.85"

0.6 WX, 1.2 MY at 58% rated  
voltage with 69.3V based ANSI  
burden.

TWO BUSHING				CATALOG NUMBERS			
GROUP	PRIMARY VOLTAGE	RATIO	SECONDARY VOLTAGE	UNFUSED	FUSES	FUSE CLIPS ONLY	SWITCHGEAR STYLE
1	*2400	20:1	120	PTG3-2-60-242	PTG3-2-60-242FF	PTG3-2-60-242CCS or CCL	PTG3-2-60-242SS
2	3300	30:1	110-50 Hz	PTG3-2-60-332	PTG3-2-60-332FF	PTG3-2-60-332CCS or CCL	PTG3-2-60-332SS
2	*4200	35:1	120	PTG3-2-60-422	PTG3-2-60-422FF	PTG3-2-60-422CCS or CCL	PTG3-2-60-422SS
2	*4800	40:1	120	PTG3-2-60-482	PTG3-2-60-482FF	PTG3-2-60-482CCS or CCL	PTG3-2-60-482SS

**NOTE:** All Primary voltages marked with an asterisk (\*) are approved for revenue metering in Canada by Industry Canada, Approval No. T-215 Rev. 02

FUSE FOR MODEL PTG3 TRANSFORMER	RATING VOLTS	INTERRUPTING AMPERES (SYM)	SUGGESTED RATING CONTINUOUS AMPERES	CAP DIA. INCHES (d)	LENGTH INCHES	CLIP CENTERS INCHES
2400:120V	5.5kV	45,000	2.0E	1.0	5.63	5.00
3300:110V	5.5kV	45,000	2.0E	1.0	5.63	5.00
4200:120V	5.5kV	45,000	1.0E	1.0	5.63	5.00
4800:120V	5.5kV	45,000	1.0E	1.0	5.63	5.00

ONE BUSHING				CATALOG NUMBERS			
GROUP	PRIMARY VOLTAGE	RATIO	SECONDARY VOLTAGE	R FR	FUSES	FUSE CLIPS ONLY	SWITCHGEAR STYLE
4A	*2400	20:1	120	230	PTG3-1-60-242F	PTG3-1-60-242CS or CL	PTG3-1-60-242S
4B	*4200	35:1	120	230	PTG3-1-60-422F	PTG3-1-60-422CS or CL	PTG3-1-60-422S
4B	*4800	40:1	120	230	PTG3-1-60-482F	PTG3-1-60-482CS or CL	PTG3-1-60-482S

### Models PTW3-1-60 & PTW3-2-60

5kV



**RU** E145172

Ratio	Thermal Rating	
	Ambient	
	30°C	55°C
20:1-40:1	750 VA	500 VA

Accuracy Class:  
0.3 WXY 1.2 Z at 100% rated  
voltage with 120V based ANSI  
burden.

5.6 kV, 60 kV BIL  
60 Hz.

Height: 6.61" Depth: 6.38"  
Unfused: 6.61" Weight: 34.0 lbs.  
One Fuse: 8.00" Unfused  
Two Fuse: 7.07" Unfused  
Width: 9.31"

0.6 WX, 1.2 MY at 58% rated  
voltage with 69.3V based ANSI  
burden.

TWO BUSHING				CATALOG NUMBERS			
GROUP	PRIMARY VOLTAGE	RATIO	SECONDARY VOLTAGE	UNFUSED	FUSES	FUSE CLIPS ONLY	SWITCHGEAR STYLE
1	*2400	20:1	120	PTW3-2-60-242	PTW3-2-60-242FF	PTW3-2-60-242CCS or CCL	PTW3-2-60-242SS
2	3300	30:1	110-50 Hz	PTW3-2-60-332	PTW3-2-60-332FF	PTW3-2-60-332CCS or CCL	PTW3-2-60-332SS
2	*4200	35:1	120	PTW3-2-60-422	PTW3-2-60-422FF	PTW3-2-60-422CCS or CCL	PTW3-2-60-422SS
2	*4800	40:1	120	PTW3-2-60-482	PTW3-2-60-482FF	PTW3-2-60-482CCS or CCL	PTW3-2-60-482SS

**NOTE:** All Primary voltages marked with an asterisk (\*) are approved for revenue metering in Canada by Industry Canada, Approval No. T-215 Rev. 02

FUSE FOR MODEL PTW3 TRANSFORMER	RATING VOLTS	INTERRUPTING AMPERES (SYM)	SUGGESTED RATING CONTINUOUS AMPERES	CAP DIA. INCHES (d)	LENGTH INCHES	CLIP CENTERS INCHES
2400:120V	5.5kV	45,000	2.0E	1.0	5.63	5.00
3300:110V	5.5kV	45,000	2.0E	1.0	5.63	5.00
4200:120V	5.5kV	45,000	1.0E	1.0	5.63	5.00
4800:120V	5.5kV	45,000	1.0E	1.0	5.63	5.00

ONE BUSHING				CATALOG NUMBERS			
GROUP	PRIMARY VOLTAGE	RATIO	SECONDARY VOLTAGE	R FR	FUSES	FUSE CLIPS ONLY (d)	SWITCHGEAR STYLE
4A	*2400	20:1	120	230	PTW3-1-60-242F	PTW3-1-60-242CS or CL	PTW3-1-60-242S
4B	*4200	35:1	120	230	PTW3-1-60-422F	PTW3-1-60-422CS or CL	PTW3-1-60-422S
4B	*4800	40:1	120	230	PTW3-1-60-482F	PTW3-1-60-482CS or CL	PTW3-1-60-482S

# 5kV thru 34.5kV Voltage Transformers

## Models PTG4-1-75 & PTG4-2-75 8.7kV



Ratio	Thermal Rating	
	Ambient	
	30°C	55°C
35:1-70:1	1500 VA	1000 VA



Accuracy Class:  
0.3 WXYM 1.2 ZZ at 100%  
rated voltage with 120V based  
ANSI burden.

9.52 kV, 75 kV BIL  
60 Hz.

Height: 9.25"  
Unfused: 9.87"  
One Fuse: 13.06"  
Two Fuse: 11.31"  
Width: 10.85"

Depth: 9.25"  
Weight: 85.0 lbs.  
Unfused  
Unfused

0.6 WXYM, 1.2 Z at 58% rated  
voltage with 69.3V based ANSI  
burden.

FUSE FOR MODEL PTG4 TRANSFORMER	RATING VOLTS	INTERRUPTING AMPERES (SYM)	SUGGESTED RATING CONTINUOUS AMPERES	CAP DIA. INCHES (d)	LENGTH INCHES	CLIP CENTERS INCHES
4200:120V	15.5kV	80,000	2.0E	1.63	13	11.50
4800:120V	15.5kV	80,000	2.0E	1.63	13	11.50
6600:110V	15.5kV	80,000	1.0E	1.63	13	11.50
7200:120V	15.5kV	80,000	1.0E	1.63	13	11.50
8400:120V	15.5kV	80,000	1.0E	1.63	13	11.50

TWO BUSHING				CATALOG NUMBERS			
GROUP	PRIMARY VOLTAGE	RATIO	SECONDARY VOLTAGE	UNFUSED	FUSES	FUSE CLIPS ONLY	SWITCHGEAR STYLE
1	*4200	35:1	120	PTG4-2-75-422	PTG4-2-75-422FF	PTG4-2-75-422CC	PTG4-2-75-422SS
2	*4800	40:1	120	PTG4-2-75-482	PTG4-2-75-482FF	PTG4-2-75-482CC	PTG4-2-75-482SS
2	6600	60:1	110-50 Hz	PTG4-2-75-662	PTG4-2-75-662FF	PTG4-2-75-662CC	PTG4-2-75-662SS
2	*7200	60:1	120	PTG4-2-75-722	PTG4-2-75-722FF	PTG4-2-75-722CC	PTG4-2-75-722SS
2	8400	70:1	120	PTG4-2-75-842	PTG4-2-75-842FF	PTG4-2-75-842CC	PTG4-2-75-842SS

**NOTE:** All Primary voltages marked with an asterisk (\*) are approved for revenue metering in Canada by Industry Canada, Approval No. AE-0429

ONE BUSHING				CATALOG NUMBERS			
GROUP	PRIMARY VOLTAGE	RATIO	SECONDARY VOLTAGE	R FR	FUSES	FUSE CLIPS ONLY	SWITCHGEAR STYLE
4A	*4200	35:1	120	65	PTG4-1-75-422F	PTG4-1-75-422C	PTG4-1-75-422S
4A	*4800	40:1	120	65	PTG4-1-75-482F	PTG4-1-75-482C	PTG4-1-75-482S
4B	6600	60:1	110-50 Hz	65	PTG4-1-75-662F	PTG4-1-75-662C	PTG4-1-75-662S
4B	*7200	60:1	120	65	PTG4-1-75-722F	PTG4-1-75-722C	PTG4-1-75-722S
4B	8400	70:1	120	65	PTG4-1-75-842F	PTG4-1-75-842C	PTG4-1-75-842S

## Models PTW4-1-75 & PTW4-2-75 8.7kV



Ratio	Thermal Rating	
	Ambient	
	30°C	55°C
35:1-70:1	1500 VA	1000 VA



Accuracy Class:  
0.3 WXYM 1.2 ZZ at 100%  
rated voltage with 120V based  
ANSI burden.

9.52 kV, 75 kV BIL  
60 Hz.

Height: 9.25"  
Unfused: 9.87"  
One Fuse: 12.17"  
Two Fuse: 11.31"  
Width: 10.85"

Depth: 9.25"  
Weight: 85.0 lbs.  
Unfused

0.6 WXYM, 1.2 Z at 58% rated  
voltage with 69.3V based ANSI  
burden.

FUSE FOR MODEL PTW4 TRANSFORMER	RATING VOLTS	INTERRUPTING AMPERES (SYM)	SUGGESTED RATING CONTINUOUS AMPERES	CAP DIA. INCHES (d)	LENGTH INCHES	CLIP CENTERS INCHES
4200:120V	15.5kV	80,000	2.0E	1.63	13	11.50
4800:120V	15.5kV	80,000	2.0E	1.63	13	11.50
6600:110V	15.5kV	80,000	1.0E	1.63	13	11.50
7200:120V	15.5kV	80,000	1.0E	1.63	13	11.50
8400:120V	15.5kV	80,000	1.0E	1.63	13	11.50

TWO BUSHING				CATALOG NUMBERS			
GROUP	PRIMARY VOLTAGE	RATIO	SECONDARY VOLTAGE	UNFUSED	FUSES	FUSE CLIPS ONLY	SWITCHGEAR STYLE
1	*4200	35:1	120	PTW4-2-75-422	PTW4-2-75-422FF	PTW4-2-75-422CC	PTW4-2-75-422SS
1	*4800	40:1	120	PTW4-2-75-482	PTW4-2-75-482FF	PTW4-2-75-482CC	PTW4-2-75-482SS
2	6600	60:1	110-50 Hz	PTW4-2-75-662	PTW4-2-75-662FF	PTW4-2-75-662CC	PTW4-2-75-662SS
2	*7200	60:1	120	PTW4-2-75-722	PTW4-2-75-722FF	PTW4-2-75-722CC	PTW4-2-75-722SS
2	8400	70:1	120	PTW4-2-75-842	PTW4-2-75-842FF	PTW4-2-75-842CC	PTW4-2-75-842SS

**NOTE:** All Primary voltages marked with an asterisk (\*) are approved for revenue metering in Canada by Industry Canada, Approval No. AE-0429

ONE BUSHING				CATALOG NUMBERS			
GROUP	PRIMARY VOLTAGE	RATIO	SECONDARY VOLTAGE	R FR	FUSES	FUSE CLIPS ONLY	SWITCHGEAR STYLE
4A	*4200	35:1	120	65	PTW4-1-75-422F	PTW4-1-75-422C	PTW4-1-75-422S
4A	*4800	40:1	120	65	PTW4-1-75-482F	PTW4-1-75-482C	PTW4-1-75-482S
4B	6600	60:1	110-50 Hz	65	PTW4-1-75-662F	PTW4-1-75-662C	PTW4-1-75-662S
4B	*7200	60:1	120	65	PTW4-1-75-722F	PTW4-1-75-722C	PTW4-1-75-722S
4B	8400	70:1	120	65	PTW4-1-75-842F	PTW4-1-75-842C	PTW4-1-75-842S

# 5kV thru 34.5kV Voltage Transformers

## Models PTG5-1-110 & PTG5-2-110

15kV



Ratio	Thermal Rating	
	Ambient	
	30°C	55°C
60:1-120:1	1500 VA	1000 VA



Accuracy Class:  
0.3 WXYZ 1.2 ZZ at 100%  
rated voltage with 120V based  
ANSI burden.

0.3 WXY, 1.2 Z at 58% rated  
voltage with 69.3V based ANSI  
burden.

15.5 kV, 110 kV BIL  
60 Hz.

Height: 9.25"  
Unfused: 9.87"      Depth: 9.25"  
One Fuse: 13.06"      Weight: 85.0 lbs.  
Two Fuse: 11.31"      Unfused  
Width: 13.13"

FUSE FOR MODEL PTG5 TRANSFORMER	RATING VOLTS	INTERRUPTING AMPERES (SYM)	SUGGESTED RATING CONTINUOUS AMPERES	CAP DIA. INCHES (d)	LENGTH INCHES	CLIP CENTERS INCHES
7200:120V	15.5kV	80,000	1.0E	1.63	13	11.50
4800:120V	15.5kV	80,000	1.0E	1.63	13	11.50
1100:120V	15.5kV	80,000	0.5E	1.63	13	11.50
12000:120V	15.5kV	80,000	0.5E	1.63	13	11.50
13200:120V	15.5kV	80,000	0.5E	1.63	13	11.50
14200:120V	15.5kV	80,000	0.5E	1.63	13	11.50

TWO BUSHING				CATALOG NUMBERS			
GROUP	PRIMARY VOLTAGE	RATIO	SECONDARY VOLTAGE	UNFUSED	FUSES	FUSE CLIPS ONLY	SWITCHGEAR STYLE
1	*7200	60:1	120	PTG5-2-110-722	PTG5-2-110-722FF	PTG5-2-110-722CC	PTG5-2-110-722SS
1	*8400	70:1	120	PTG5-2-110-842	PTG5-2-110-842FF	PTG5-2-110-842CC	PTG5-2-110-842SS
2	11000	100:1	110-50Hz	PTG5-2-110-113	PTG5-2-110-113FF	PTG5-2-110-113CC	PTG5-2-110-113SS
2	*12000	100:1	120	PTG5-2-110-123	PTG5-2-110-123FF	PTG5-2-110-123CC	PTG5-2-110-123SS
2	13200	110:1	120	PTG5-2-110-1322	PTG5-2-110-1322FF	PTG5-2-110-1322CC	PTG5-2-110-1322SS
2	*14400	120:1	120	PTG5-2-110-1442	PTG5-2-110-1442FF	PTG5-2-110-1442CC	PTG5-2-110-1442SS

**NOTE:** All Primary voltages marked with an asterisk (\*) are approved for revenue metering in Canada by Industry Canada, Approval No. AE-0431 Rev.01

ONE BUSHING				CATALOG NUMBERS			
GROUP	PRIMARY VOLTAGE	RATIO	SECONDARY VOLTAGE	R <sub>FR</sub>	FUSES	FUSE CLIPS ONLY	SWITCHGEAR STYLE
4A	*7200	60:1	120	65	PTG5-1-110-722F	PTG5-1-110-722C	PTG5-1-110-722S
4A	*8400	70:1	120	65	PTG5-1-110-842F	PTG5-1-110-842C	PTG5-1-110-842S
4B	11000	100:1	110-50Hz	65	PTG5-1-110-113F	PTG5-1-110-113C	PTG5-1-110-113S
4B	*12000	100:1	120	65	PTG5-1-110-123F	PTG5-1-110-123C	PTG5-1-110-123S
4B	13200	110:1	120	65	PTG5-1-110-1322F	PTG5-1-110-1322C	PTG5-1-110-1322S
4B	*14000	120:1	120	65	PTG5-1-110-1442F	PTG5-1-110-1442C	PTG5-1-110-1442S

## Models PTW5-1-110 & PTW5-2-110

15kV



Ratio	Thermal Rating	
	Ambient	
	30°C	55°C
60:1-120:1	1500 VA	1000 VA



Accuracy Class:  
0.3 WXY 1.2 ZZ at 100%  
rated voltage with 120V based  
ANSI burden.

0.6 WXY, 1.2 Z at 58% rated  
voltage with 69.3V based ANSI  
burden.

15.5 kV, 110 kV BIL  
60 Hz.

Height: 9.25"  
Unfused: 9.87"      Depth: 9.25"  
One Fuse: 12.17"      Weight: 85.0 lbs.  
Two Fuse: 11.31"      Unfused  
Width: 13.13"

FUSE FOR MODEL PTW5 TRANSFORMER	RATING VOLTS	INTERRUPTING AMPERES (SYM)	SUGGESTED RATING CONTINUOUS AMPERES	CAP DIA. INCHES (d)	LENGTH INCHES	CLIP CENTERS INCHES
7200:120V	15.5kV	80,000	1.0E	1.63	13	11.50
4800:120V	15.5kV	80,000	1.0E	1.63	13	11.50
11000:110V	15.5kV	80,000	0.5E	1.63	13	11.50
12000:120V	15.5kV	80,000	0.5E	1.63	13	11.50
13200:120V	15.5kV	80,000	0.5E	1.63	13	11.50
13200:120V	15.5kV	80,000	0.5E	1.63	13	11.50

TWO BUSHING				CATALOG NUMBERS			
GROUP	PRIMARY VOLTAGE	RATIO	SECONDARY VOLTAGE	UNFUSED	FUSES	FUSE CLIPS ONLY	SWITCHGEAR STYLE
1	*7200	60:1	120	PTW5-2-110-722	PTW5-2-110-722FF	PTW5-2-110-722CC	PTW5-2-110-722SS
1	*8400	70:1	120	PTW5-2-110-842	PTW5-2-110-842FF	PTW5-2-110-842CC	PTW5-2-110-842SS
2	11000	100:1	110-50Hz	PTW5-2-110-113	PTW5-2-110-113FF	PTW5-2-110-113CC	PTW5-2-110-113SS
2	*12000	100:1	120	PTW5-2-110-123	PTW5-2-110-123FF	PTW5-2-110-123CC	PTW5-2-110-123SS
2	13200	110:1	120	PTW5-2-110-1322	PTW5-2-110-1322FF	PTW5-2-110-1322CC	PTW5-2-110-1322SS
2	*14400	120:1	120	PTW5-2-110-1442	PTW5-2-110-1442FF	PTW5-2-110-1442CC	PTW5-2-110-1442SS

**NOTE:** All Primary voltages marked with an asterisk (\*) are approved for revenue metering in Canada by Industry Canada, Approval No. AE-0431 Rev.01

ONE BUSHING				CATALOG NUMBERS			
GROUP	PRIMARY VOLTAGE	RATIO	SECONDARY VOLTAGE	R <sub>FR</sub>	FUSES	FUSE CLIPS ONLY	SWITCHGEAR STYLE
4A	*7200	60:1	120	65	PTW5-1-110-722F	PTW5-1-110-722C	PTW5-1-110-722S
4A	*8400	70:1	120	65	PTW5-1-110-842F	PTW5-1-110-842C	PTW5-1-110-842S
4B	11000	100:1	110-50Hz	65	PTW5-1-110-113F	PTW5-1-110-113C	PTW5-1-110-113S
4B	*12000	100:1	120	65	PTW5-1-110-123F	PTW5-1-110-123C	PTW5-1-110-123S
4B	13200	110:1	120	65	PTW5-1-110-1322F	PTW5-1-110-1322C	PTW5-1-110-1322S
4B	*14000	120:1	120	65	PTW5-1-110-1442F	PTW5-1-110-1442C	PTW5-1-110-1442S

## 5kV thru 34.5kV Voltage Transformers

### Model PT6-1-125

25kV



**RU** E145172

Ratio	Thermal Rating	
	Ambient	
	30°C	55°C
85:1-200:1	1500 VA	1000 VA

Accuracy Class:  
0.3 WXYZ 1.2 ZZ at 100%  
rated voltage with 120V based  
ANSI burden.

0.3 WXYM, 1.2 Z at 58% rated  
voltage with 69.3V based ANSI  
burden.

25.5 kV, 125 kV BIL  
60 Hz.

Height: 13.44"  
Width: 13.75"  
Depth: 9.50"  
Weight: 125.0 lbs.

PRIMARY VOLTAGE	RATIO	SECONDARY VOLTAGE	CATALOG NUMBERS	R FR
10200	85:1	120	PT6-1-125-1022	86 ohms
*12000	100:1	120	PT6-1-125-123	86 ohms
13200	110:1	120	PT6-1-125-1322	86 ohms
13800	115:1	120	PT6-1-125-1382	86 ohms
*14400	120:1	120	PT6-1-125-1442	86 ohms
*18000	150:1	120	PT6-1-125-183	48 ohms
*21000	175:1	120	PT6-1-125-213	48 ohms
*24000	200:1	120	PT6-1-125-243	48 ohms

**NOTE:** All primary voltages marked with an asterisk (\*) are approved for revenue metering in Canada by industry Canada, Approval No. AE-0676 Rev.2

### Model PT6-2-125

25kV



**RU** E145172

Ratio	Thermal Rating	
	Ambient	
	30°C	55°C
150:1-200:1	1500 VA	1000 VA

Accuracy Class:  
0.3 WXYZ 1.2 ZZ at 100%  
rated voltage with 120V based  
ANSI burden.

0.3 WXYM, 1.2 Z at 58% rated  
voltage with 69.3V based ANSI  
burden.

25.5 kV, 125 kV BIL  
60 Hz.

Height: 13.44"  
Width: 13.75"  
Depth: 9.50"  
Weight: 125.0 lbs.

PRIMARY VOLTAGE	RATIO	SECONDARY VOLTAGE	150 kV BIL CATALOG NUMBERS
18000	150:1	120	PT6-2-125-183
21000	175:1	120	PT6-2-125-213
24000	200:1	120	PT6-2-125-243

Approved for revenue metering in Canada by industry Canada, Approval No. AE-0676 Rev.2

### Model PT7-1-150

34.5kV



**RU** E145172

Ratio	Thermal Rating	
	Ambient	
	30°C	55°C
127:1-300:1	1500 VA	1000 VA

Accuracy Class:  
0.3 WXYZ 1.2 ZZ at 100%  
rated voltage with 120V based  
ANSI burden.

0.3 WXYM, 1.2 Z at 58% rated  
voltage with 69.3V based ANSI  
burden.

PT7-1-150, 36.5 kV, 150 kV BIL  
PT7-1-200, 36.5 kV, 200 kV BIL  
60 Hz.

Height: 14.94"  
Width: 13.75"  
Depth: 9.50"  
Weight: 140.0 lbs.

PRIMARY VOLTAGE	RATIO	SECONDARY VOLTAGE	** 150kV BIL CATALOG NUMBERS	R FR
15240	127:1	120	PT7-1-150-SD01967	86 ohms
15600	130:1	120	PT7-1-150-SD03259	86 ohms
*16800	140:1	120	PT7-1-150-SD02381	86 ohms
19920	166:1	120	PT7-1-150-SD01620	86 ohms
*20125	175:1	115	PT7-1-150-2012A	86 ohms
24000	200:1	120	PT7-1-150-SD03289	48 ohms
26400	220:1	120	PT7-1-150-SD02085	48 ohms
27000	225:1	120	PT7-1-150-SD03158	48 ohms
27600	240:1	115	PT7-1-150-SD03449	48 ohms
34500	300:1	115	PT7-1-150-SD01617	48 ohms

**NOTE:** All primary voltages marked with an asterisk (\*) are approved for revenue metering in Canada by industry Canada, Approval No. AE-0677 Rev.1

\*\* Consult factory for 200kV BIL catalog numbers.

### Models PT7-2-150 & PT7-2-200

34.5kV



**RU** E145172

Ratio	Thermal Rating	
	Ambient	
	30°C	55°C
200:1-300:1	1500 VA	1000 VA

Accuracy Class:  
0.3 WXYZ 1.2 ZZ at 100%  
rated voltage with 120V based  
ANSI burden.

0.3 WXYM, 1.2 Z at 58% rated  
voltage with 69.3V based ANSI  
burden.

PT7-2-150, 36.5 kV, 150 kV BIL  
PT7-2-200, 36.5 kV, 200 kV BIL  
60 Hz.

Height: 15.75"  
Width: 16.25"  
\*PTS7: 12.97"  
Depth: 16.50"  
Weight: 175.0 lbs.

PRIMARY VOLTAGE	RATIO	SECONDARY VOLTAGE	150 kV BIL CATALOG NUMBERS	200 kV BIL CATALOG NUMBERS	*150 kV BIL CATALOG NUMBERS
24000	200:1	120	PT7-2-150-243	PT7-2-200-243	PTS7-2-150-243
27600	240:1	115	PT7-2-150-2762	PT7-2-200-2762	PTS7-2-150-2762
34500	300:1	115	PT7-2-150-3452	PT7-2-200-3452	PTS7-2-150-3452

Approved for revenue metering in Canada by industry Canada, Approval No. AE-0677 Rev. 1

\*Reduced width dimension for roll-out drawer or truck mounted installations.

## 5kV thru 34.5kV Control Power Transformers

### Model CPTS3-60-5 & CPTS5-95-5 5kV/15kV



Ratio	Thermal Rating	
	Ambient	
	30°C	55°C
20:1-120:1	5 kVA	4.3 kVA

CPTS3: 5 kV, 60 kV BIL  
 CPTS5: 15 kV, 95 kV BIL  
 60 Hz.      Height: 14.12"    Depth: 9.00"  
                                  Width: 17.00"    Weight: 165.0 lbs.

**CATALOG NUMBER	PRIMARY VOLTAGE	RATIO	SECONDARY VOLTAGE***
CPTS3-60-5-242**	2400	20:1	120/240
CPTS3-60-5-4161**	4160	34.7:1	120/240
CPTS3-60-5-482**	4800	40:1	120/240
CPTS5-95-5-722**	7200	60:1	120/240
CPTS5-95-5-842**	8400	70:1	120/240
CPTS5-95-5-123**	12000	100:1	120/240
CPTS5-95-5-1242**	12470	104:1	120/240
CPTS5-95-5-1322**	13200	110:1	120/240
CPTS5-95-5-1382**	13800	115:1	120/240
CPTS5-95-5-1442**	14400	120:1	120/240

Note all fuse rating are based on NEC transformer overcurrent protection recommendations. Specific applications may require other ratings.

\*\*For 1 ± 7 1/2% taps use suffix "A" after Catalog No.  
 \*\*For 2 ± 2 1/2% taps use suffix "B" after Catalog No.  
 \*\*\* For other secondary voltages, contact factory.

### Model CPTS3-60-10 & CPTS5-95-10 5kV/15kV



Ratio	Thermal Rating	
	Ambient	
	30°C	55°C
20:1-120:1	10 kVA	8.6 kVA

CPTS3: 5 kV, 60 kV BIL  
 CPTS5: 15 kV, 95 kV BIL  
 60 Hz.      Height: 15.38"    Depth: 11.50"  
                                  Width: 17.88"    Weight: 250.0 lbs.

CPTS3-60-10-242**	2400	20:1	120/240
CPTS3-60-10-4161**	4160	34.7:1	120/240
CPTS3-60-10-482**	4800	40:1	120/240
CPTS5-95-10-722**	7200	60:1	120/240
CPTS5-95-10-842**	8400	70:1	120/240
CPTS5-95-10-123**	12000	100:1	120/240
CPTS5-95-10-1242**	12470	104:1	120/240
CPTS5-95-10-1322**	13200	110:1	120/240
CPTS5-95-10-1382**	13800	115:1	120/240
CPTS5-95-10-1442**	14400	120:1	120/240

Note all fuse rating are based on NEC transformer overcurrent protection recommendations. Specific applications may require other ratings.

\*\*For 1 ± 7 1/2% taps use suffix "A" after Catalog No.  
 \*\*For 2 ± 2 1/2% taps use suffix "B" after Catalog No.  
 \*\*\* For other secondary voltages, contact the factory.

### Model CPTS3-60-15 & CPTS5-95-15 5kV/15kV



Ratio	Thermal Rating	
	Ambient	
	30°C	55°C
20:1-120:1	15 kVA	12.9 kVA

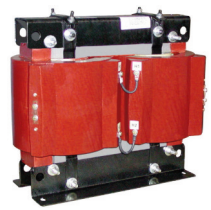
CPTS3: 5 kV, 60 kV BIL  
 CPTS5: 15 kV, 95 kV BIL  
 60 Hz.      Height: 15.38"    Depth: 11.50"  
                                  Width: 17.88"    Weight: 290.0 lbs.

CPTS3-60-15-242**	2400	20:1	120/240
CPTS3-60-15-4161**	4160	34.7:1	120/240
CPTS3-60-15-482**	4800	40:1	120/240
CPTS5-95-15-722**	7200	60:1	120/240
CPTS5-95-15-842**	8400	70:1	120/240
CPTS5-95-15-123**	12000	100:1	120/240
CPTS5-95-15-1242**	12470	104:1	120/240
CPTS5-95-15-1322**	13200	110:1	120/240
CPTS5-95-15-1382**	13800	115:1	120/240
CPTS5-95-15-1442**	14400	120:1	120/240

Note all fuse rating are based on NEC transformer overcurrent protection recommendations. Specific applications may require other ratings.

\*\*For 1 ± 7 1/2% taps use suffix "A" after Catalog No.  
 \*\*For 2 ± 2 1/2% taps use suffix "B" after Catalog No.  
 \*\*\* For other secondary voltages, contact the factory.

### Model CPT3-60-25 5kV



Ratio	Thermal Rating	
	Ambient	
	30°C	55°C
20:1-40:1	25 kVA	21.5 kVA

5 kV, 60 kV BIL  
 60 Hz.      Height: 20.25"    Depth: 11.50"  
                                  Width: 23.75"    Weight: 411.0 lbs.

CPT3-60-25-242**	2400V	20:1	120/240
CPT3-60-25-4161**	4160V	34.7:1	120/240
CPT3-60-25-482**	4800V	40:1	120/240

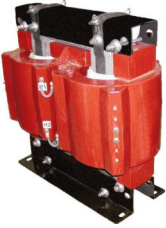
Note all fuse rating are based on NEC transformer overcurrent protection recommendations. Specific applications may require other ratings.

\*\*For 1 ± 7 1/2% taps use suffix "A" after Catalog No.  
 \*\*For 2 ± 2 1/2% taps use suffix "B" after Catalog No.  
 \*\*\* For other secondary voltages, contact the factory.

## 5kV thru 34.5kV Control Power Transformers

### Model CPTN5-95-25

15kV



Ratio	Thermal Rating	
	Ambient	
	30°C	55°C
60:1-120:1	25 kVA	21.5 kVA

15 kV, 95 kV BIL  
60 Hz.

Height: 23.38" Depth: 11.50"  
Width: 23.75" Weight: 450.0 lbs.

**CATALOG NUMBER	PRIMARY VOLTAGE	RATIO	SECONDARY VOLTAGE	*FUSE RATING
CPTN5-95-25-722**	7200	60:1	120/240	10E
CPTN5-95-25-842**	8400	70:1	120/240	10E
CPTN5-95-25-123**	12000	100:1	120/240	7E
CPTN5-95-25-1242**	12470	104:1	120/240	7E
CPTN5-95-25-1322**	13200	110:1	120/240	7E
CPTN5-95-25-1382**	13800	115:1	120/240	7E
CPTN5-95-25-1442**	14400	120:1	120/240	7E

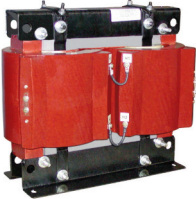
\*Note all fuse rating are based on NEC transformer overcurrent protection recommendations. Specific applications may require other ratings.

\*\*For 1 ± 7 1/2% taps use suffix "A" after Catalog No.

\*\*For 2 ± 2 1/2% taps use suffix "B" after Catalog No.

### Model CPT3-60-37.5

5kV



Ratio	Thermal Rating	
	Ambient	
	30°C	55°C
20:1-40:1	37.5 kVA	32.2 kVA

5 kV, 60 kV BIL  
60 Hz.

Height: 20.25" Depth: 11.50"  
Width: 23.75" Weight: 450.0 lbs.

CPT3-60-37.5-242**	2400	20:1	120/240	40E
CPT3-60-37.5-4161**	4160	34.7:1	120/240	20E
CPT3-60-37.5-482**	4800	40:1	120/240	20E

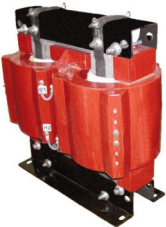
\*Note all fuse rating are based on NEC transformer overcurrent protection recommendations. Specific applications may require other ratings.

\*\*For 1 ± 7 1/2% taps use suffix "A" after Catalog No.

\*\*For 2 ± 2 1/2% taps use suffix "B" after Catalog No.

### Model CPTN5-95-37.5

15kV



Ratio	Thermal Rating	
	Ambient	
	30°C	55°C
60:1-120:1	37.5 kVA	32.2 kVA

15 kV, 95 kV BIL  
60 Hz.

Height: 23.38" Depth: 11.50"  
Width: 23.75" Weight: 450.0 lbs.

CPTN5-95-37.5-722**	7200	60:1	120/240	20E
CPTN5-95-37.5-842**	8400	70:1	120/240	20E
CPTN5-95-37.5-123**	12000	100:1	120/240	10E
CPTN5-95-37.5-1242**	12470	104:1	120/240	10E
CPTN5-95-37.5-1322**	13200	110:1	120/240	10E
CPTN5-95-37.5-1382**	13800	115:1	120/240	10E
CPTN5-95-37.5-1442**	14400	120:1	120/240	10E

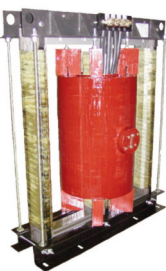
\*Note all fuse rating are based on NEC transformer overcurrent protection recommendations. Specific applications may require other ratings.

\*\*For 1 ± 7 1/2% taps use suffix "A" after Catalog No.

\*\*For 2 ± 2 1/2% taps use suffix "B" after Catalog No.

### Model CPTD3-60-50 & CPTD5-95-50

5kV/15kV



Ratio	Thermal Rating	
	Ambient	
	30°C	55°C
20:1-120:1	50 kVA	42.9 kVA

CPTD3-5 kV, 60 kV BIL  
CPTD5-15kV, 95 kV BIL  
60 Hz.

Height: 36.38" Depth: 17.75"  
Width: 29.25" Weight: 750.0 lbs.

CPTD3-60-50-242**	2400	20:1	120/240	40E
CPTD3-60-50-4161**	4160	34.7:1	120/240	25E
CPTD3-60-50-482**	4800	40:1	120/240	25E
CPTD5-95-50-722**	7200	60:1	120/240	25E
CPTD5-95-50-842**	8400	70:1	120/240	25E
CPTD5-95-50-123**	12000	100:1	120/240	15E
CPTD5-95-50-1242**	12470	104:1	120/240	15E
CPTD5-95-50-1322**	13200	110:1	120/240	10E
CPTD5-95-50-1382**	13800	115:1	120/240	10E
CPTD5-95-50-1442**	14400	120:1	120/240	10E

\*Note all fuse rating are based on NEC transformer overcurrent protection recommendations. Specific applications may require other ratings.

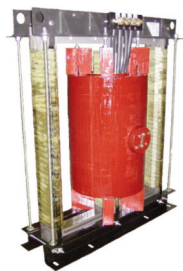
\*\*For 1 ± 7 1/2% taps use suffix "A" after Catalog No.

\*\*For 2 ± 2 1/2% taps use suffix "B" after Catalog No.

## 5kV thru 34.5kV Control Power Transformers

### Model CPTD7-150-25/ 37.5/ 50

34.5kV



Thermal Rating (VA)	
Ambient	
30°C	55°C
25 kVA	21.5 kVA
37.5 kVA	32.2 kVA
50 kVA	42.9 kVA

34.5 kV, 150 kV BIL  
60 Hz. Height: 41.75" Depth: 19.13"  
Width: 35.75" Weight: 750.0 lbs.

**Note: Contact factory for additional Single and Three phase models or visit [www.GEGridSolutions.com/iti](http://www.GEGridSolutions.com/iti)**

CATALOG NUMBER	PRIMARY VOLTAGE	SECONDARY VOLTAGE
<b>25 kVA</b>		
CPTD7-150-25-1992**	19920	120/240
CPTD7-150-25-2762**	27600	120/240
CPTD7-150-25-2882**	28800	120/240
CPTD7-150-25-3452**	34500	120/240
<b>37.5 kVA</b>		
CPTD7-150-37.5-1992**	19920	120/240
CPTD7-150-37.5-2762**	27600	120/240
CPTD7-150-37.5-2882**	28800	120/240
CPTD7-150-37.5-3452**	34500	120/240
<b>50 kVA</b>		
CPTD7-150-50-1992**	19920	120/240
CPTD7-150-50-2762**	27600	120/240
CPTD7-150-50-2882**	28800	120/240
CPTD7-150-50-3452**	34500	120/240

\*\*For 1 ± 7 1/2% taps use suffix "A" after Catalog No.  
\*\*For 2 ± 2 1/2% taps use suffix "B" after Catalog No.

## OEM Accessories

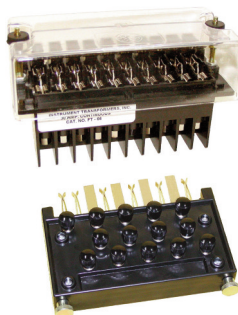
### Series 95 Selector Switches & Lockout Relays



Heavy industrial construction  
Rotary/ Double wiping knife blade design  
600 VAC, 30 amp continuous  
UL/ cUL recognized.  
Typically used in low & medium voltage switchgear, MCC's, and relay and control panels.

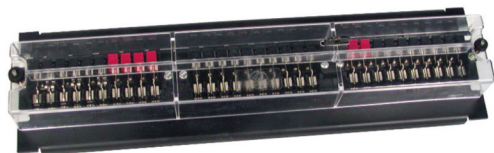


### Series FT Test Switches & Test Plugs



An industry standard for CT & VT isolation for instrument transformer and connected device testing.  
Up to 10 poles; Numerous configurations available.  
Typically mounted on switchgear and relay panels  
10 pole test plug available  
UL and cUL recognized  
Rated 600 volts and 30 amps continuous.

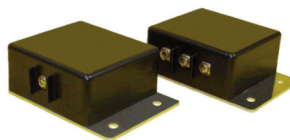
### Series RT Rack Mounted Test Switches



Up to three Series FT switches can be assembled on various size 19" wide panels.  
One piece clear cover standard  
Panels available in choice of colors and materials  
Typically rack mounted in relay panels  
UL & cUL recognized.

For more information see details at [www.GEGridSolutions.com/iti](http://www.GEGridSolutions.com/iti)

### Open Circuit Protectors



Connect across CT secondary terminals to prevent inadvertent open circuit conditions.  
C100 to C800. Single and three element options available.

### Capacitor Trip Devices



Provide a temporary source of energy for circuit breaker or switch trip coil operation during a loss of AC control power. Battery backup model available.

## Accuracy Standards (IEEE C57.13)

### IEEE Accuracy Standards for Voltage Transformers - For VT's with Rated Secondary Voltage Approx. 120 or 69.3 Volts

The method of classifying voltage transformers as to accuracy is as follows:

Since the accuracy is dependent on the burden, standard burdens have been designated, and these are the burdens at which the accuracy is to be classified.

The standard burdens have been chosen to cover the range normally encountered in service and are identified by the letters W, X, M, Y, Z, and ZZ as given in Table 1.

**Table 1**  
**IEEE Standard Burdens\***  
**for Voltage Transformers**

Burden	Volt-amperes at 120 or 69.3 Secondary Volts	Burden Power Factor
W	12.5	0.10
X	25.0	0.70
M	35.0	0.20
Y	75.0	0.85
Z	200.0	0.85
ZZ	400.0	0.85

\* Burden designations have no significance except at 60 Hz.

It should be pointed out that the burden of any specific meter or instrument may approximate, but seldom is the same as, any one of the standard burdens. The standard burden serves merely as a standardized reference point at which the accuracy of the transformer may be stated.

It should also be noted that each standard burden has the same VA at 120 or 69.3 secondary volts, and therefore has different impedances at the two voltages.

The accuracy classes with their limits of ratio correction factor and transformer correction factor are given in Table 2.

**Table 2**  
**IEEE Accuracy Classes**  
**for Voltage Transformers**

Accuracy Class	Limits of Correction Factor and Transformer Correction Factor*		Limits of Power Factor (Lagging) of Metered Power Load
	Minimum	Maximum	
0.3	0.997	1.003	0.6-1.0
0.6	0.994	1.006	0.6-1.0
1.2	0.988	1.012	0.6-1.0

\* The limits given for each accuracy class apply from 10 percent above rated voltage to 10 percent below rated voltage, at rated frequency, and from no burden on the voltage transformer to the specified burden, maintaining the power factor of the specified burden.

### IEEE Metering Accuracy Standards for Current Transformers- For CT's with Rated Secondary Current of 5 Amperes

The method of classifying current transformers as to accuracy is as follows:

Since the accuracy is dependent upon the burden, standard burdens have been designated. These are the burdens at which the accuracies are to be classified.

The standard burdens have been chosen to cover the range normally encountered in service and are designated as B-0.1, B-0.2, etc. as given in Table 3.

**Table 3**  
**IEEE Standard Burdens\***  
**for Current Transformers with 5 Ampere Secondaries**

Burden	Volt-amperes (at 5 Amp)	Power Factor	Resistance (Ohms)	Inductance (Milli-henrys)	Impedance (Ohms)
B0.1	2.5	0.9	0.09	0.116	0.1
B0.2	5.0	0.9	0.18	0.232	0.2
B0.5	12.5	0.9	0.45	0.580	0.5
B0.9	22.5	0.9	0.81	1.04	0.9
B1.8	45.0	0.9	1.62	2.08	1.8
B-1	25.0	0.5	0.5	2.3	1.0
B-2	50.0	0.5	1.0	4.6	2.0
B-4	100.0	0.5	2.0	9.2	4.0
B-8	200.0	0.5	4.0	18.4	8.0

\* Burden designations have no significance except at 60 Hz.

It should be pointed out that the burden of any specific meter or instrument may approximate, but seldom is the same as, any one of the standard burdens. The standard burden serves merely as a standardized reference point at which the accuracy of the transformer may be stated.

The accuracy classes with their limits of ratio correction factor and transformer correction factor are given in Table 4.

**Table 4**  
**IEEE Metering Accuracy Classes**  
**for Current Transformers**

Accuracy Class	Limits of Ratio Correction Factor and Transformer Correction Factor				Limits of Power Factor (Lagging) of Metered Power Load
	100% Rated Current*		10% Rated Current		
	Minimum	Maximum	Minimum	Maximum	
0.3	0.997	1.003	0.994	1.006	0.6-1.0
0.6	0.994	1.006	0.988	1.012	0.6-1.0
1.2	0.988	1.012	0.976	1.024	0.6-1.0

\* These limits also apply at the maximum continuous-thermal current, which is the product of rated current and the continuous-thermal-current rating factor.

**Consult Factory for Questions Concerning IEC & Other Standards**