

# Multilin USB-to-Serial Cable Driver v1.02

## Release Notes

GE Publication Number: GER-4731

Copyright © 2016 GE Multilin Inc.

## Overview

---

### Summary

GE Grid Solutions issues the Multilin USB-to-Serial Cable Driver version 1.02. Highlights of this release include:

- Support to Windows 7 (32-bit & 64-bit), Windows 8.1 (64-bit), and Windows 10 (32-bit & 64-bit) Operating systems

Release Date: **January 18, 2016**

Launch the USB-to-Serial Cable Driver by downloading directly from our website:

<http://www.geGridSolutions.com/app/ViewFiles.aspx?prod=usb2serial&type=7>

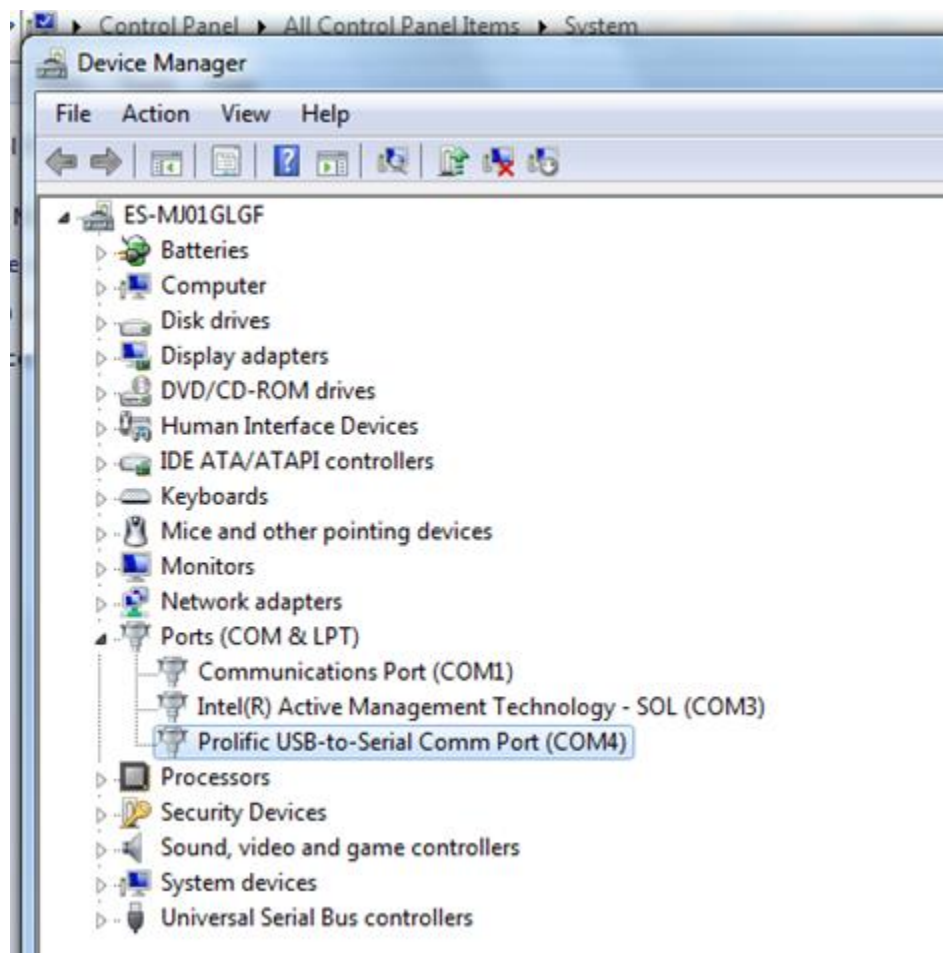
## Multilin USB-to-Serial Cable Driver Special Instructions

The required USB driver version is 3.3.2.102, dated 9/24/2008.

Check the driver version using the computer Control Panel:

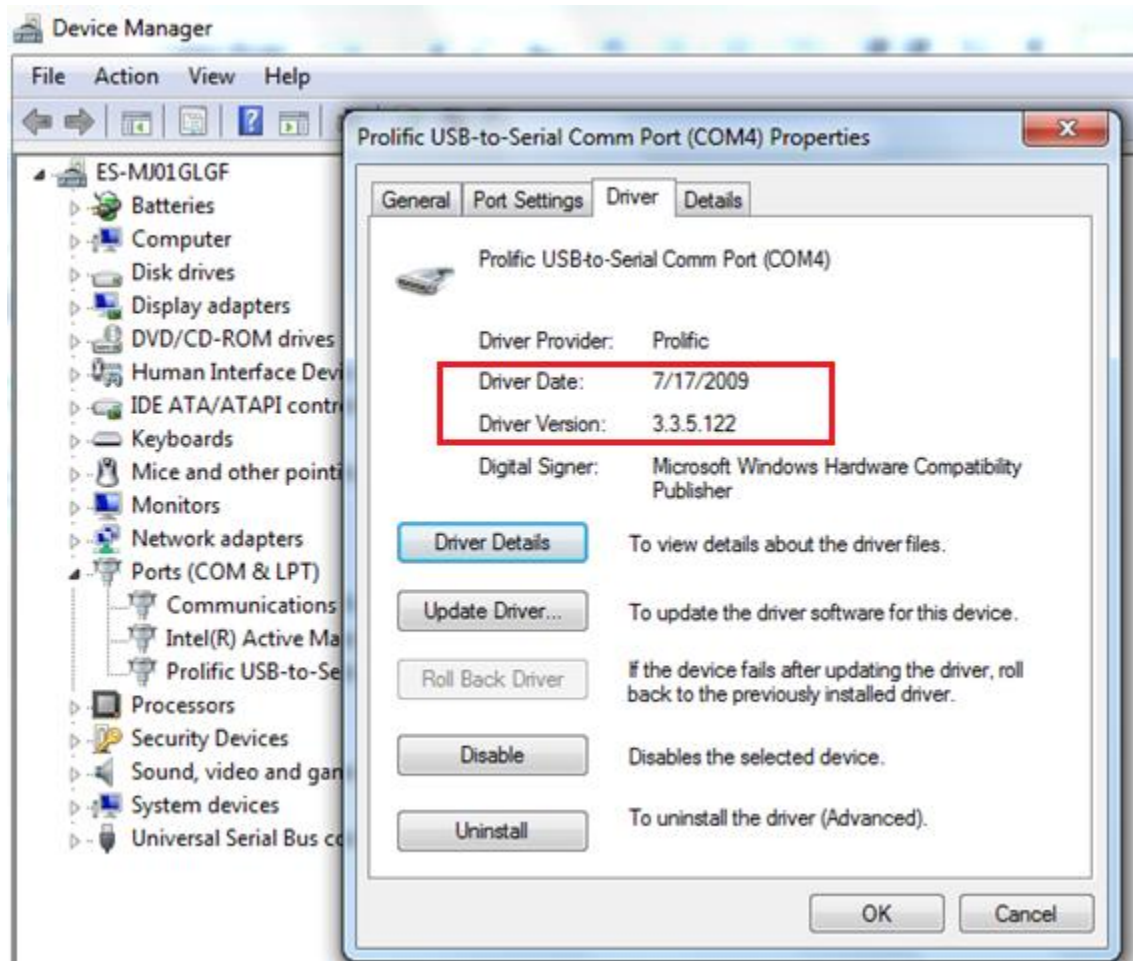
**Note:** The USB-to-Serial Cable must be plugged in for the computer to detect the hardware as a COM Port.

1. Select **Start > Control Panel > Device Manager > Ports (COM & LPT)**
2. Select **Prolific USB-to-Serial Comm Port** as shown.

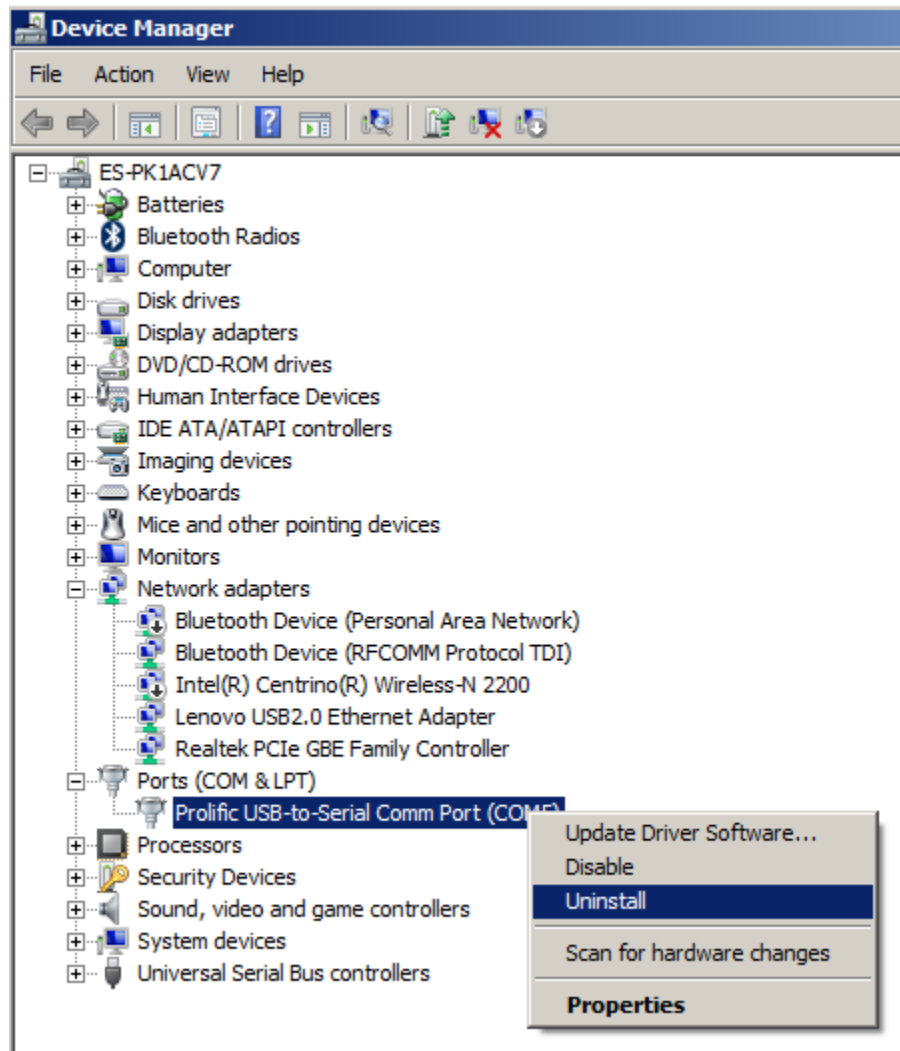


3. Right-click the Comm Port, select **Properties**, and click the **Driver** tab.
4. Confirm the USB Driver Version is 3.3.2.102, and Driver Date is 9/24/2008.

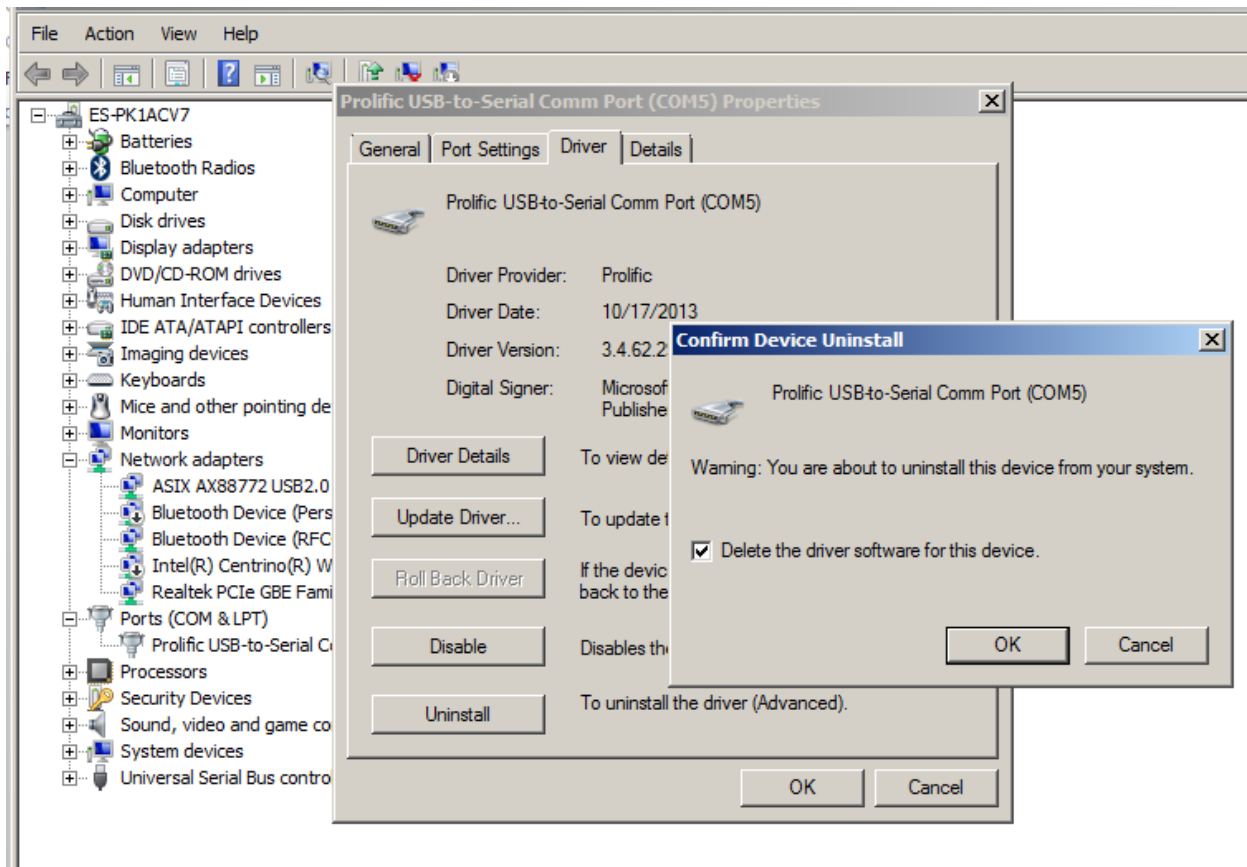
If the driver has different version number (as shown), uninstall the current driver and install the correct driver version.



5. If you have the wrong driver version, right-click the **Prolific USB-to-Serial Comm Port** and select **Uninstall**.



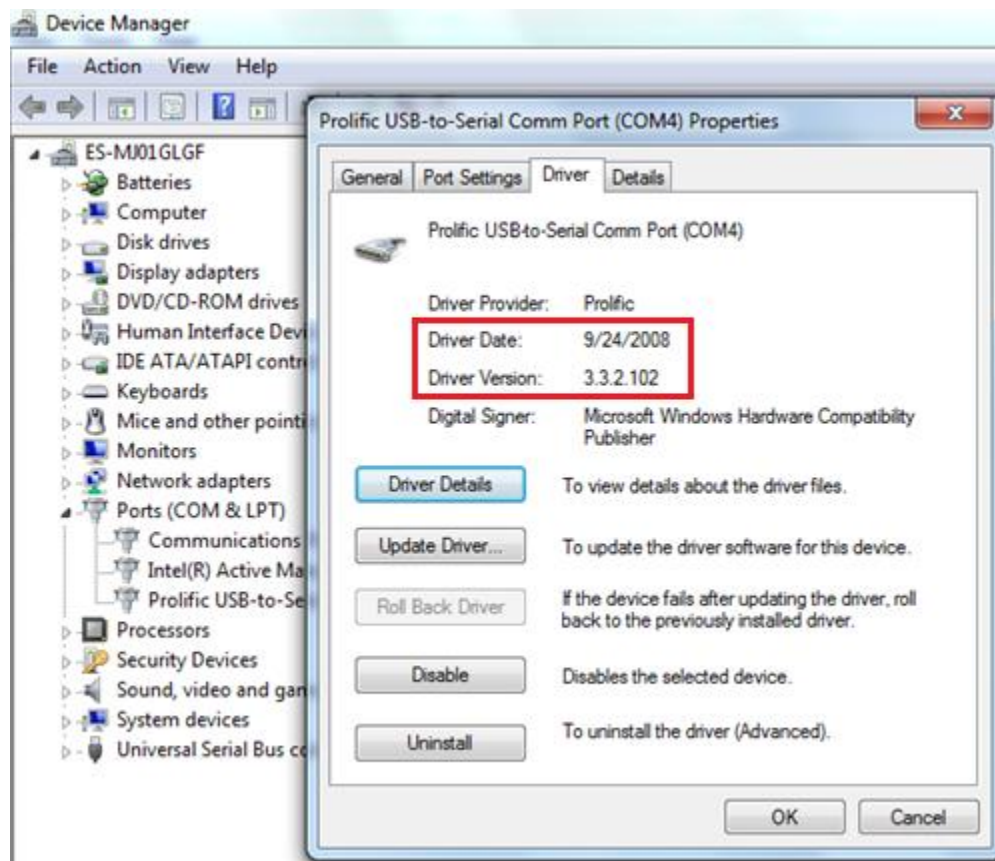
6. Check "Delete the driver software for the device" and click **OK**.



7. Existing driver will be removed.
8. Install the correct driver by running the USB driver installation utility.

9. Confirm the USB Driver Version is now 3.3.2.102, and Driver Date is 9/24/2008, by right-clicking "Prolific USB-to-Serial Comm Port", selecting **Properties**, and clicking the **Driver** tab.

**Note:** The required USB driver version is 3.3.2.102 dated 9/24/2008 (as shown).



## Release details

---

In the following change descriptions, a revision category letter is placed to the left of the description. Refer to the Appendix at the end of this document for additional details.

### **E**      **Compatibility with Windows**

USB-to-Serial drivers are now compatible with

- Windows 7 (SP1 or later) – 32 & 64 bit
- Windows 8.1- 64 bit
- Windows 10 32 & 64 bit

**Please contact your local Multilin sales representative or Multilin Customer Service Department (CST) for any questions regarding this upgrade.**

## Appendix

### Change categories

This document uses the following categories to classify the changes.

**Table 1: Revision categories**

Code	Category	Comments
N	New feature	A separate feature added to the relay. Changes to existing features even if they significantly expand the functionality are not in this category
G	Change	A neutral change that does not bring any new value and is not correcting any known problem
E	Enhancement	Modification of an existing feature bringing extra value to the application
D	Changed, incomplete or false faceplate indications	Changes to, or problems with text messages, LEDs and user pushbuttons
R	Changed, incomplete or false relay records	Changes to, or problems with relay records (oscillography, demand, fault reports, etc.)
C	Protocols and communications	Changes to, or problems with protocols or communication features
M	Metering	Metering out of specification or other metering problems
P	Protection out of specification	Protection operates correctly but does not meet published specifications (example: delayed trip)
U	Unavailability of protection	Protection not available in a self-demonstrating way so that corrective actions could be taken immediately
H	Hidden failure to trip	Protection may not operate when it should
F	False trip	Protection may operate when it should not
B	Unexpected restart	Relay restarts unexpectedly

The revision category letter is placed to the left of the change description.

### Multilin technical support

GE Grid Solutions - Multilin contact information and call center for product support is shown below:

GE Grid Solutions - Multilin  
650 Markland Street  
Markham, Ontario L6C0M1  
Canada

Telephone: 1- 905-927-7070 or 1-800-547-8629 (North America), +34 94 485 88 00 (Europe)  
Fax: 905-927-5098 (North America), +34 94 485 88 45 (Europe)

E-mail: [multilin.tech@ge.com](mailto:multilin.tech@ge.com)  
Home Page: <http://www.geGridSolutions.com/Multilin/>