

# GE

## Energy Connections

# Model 3P9

**Current Transformer**  
**Window Size 1.25" x 0.25" Full Radius**

### Application

3 phase metering and motor overload.

### Frequency

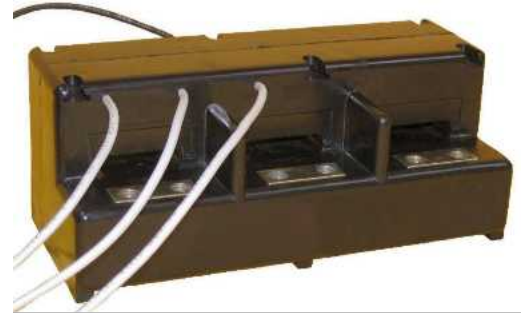
50-400 Hz.

### Insulation Level

600 Volts, 10 kV BIL full wave.

Secondary leads are UL 1015, 105°C.,  
CSA approved, No. 16 AWG, 24" long.

Approximate weight 6 lbs.



#### REGULATORY AGENCY APPROVALS



E93779



LR89403

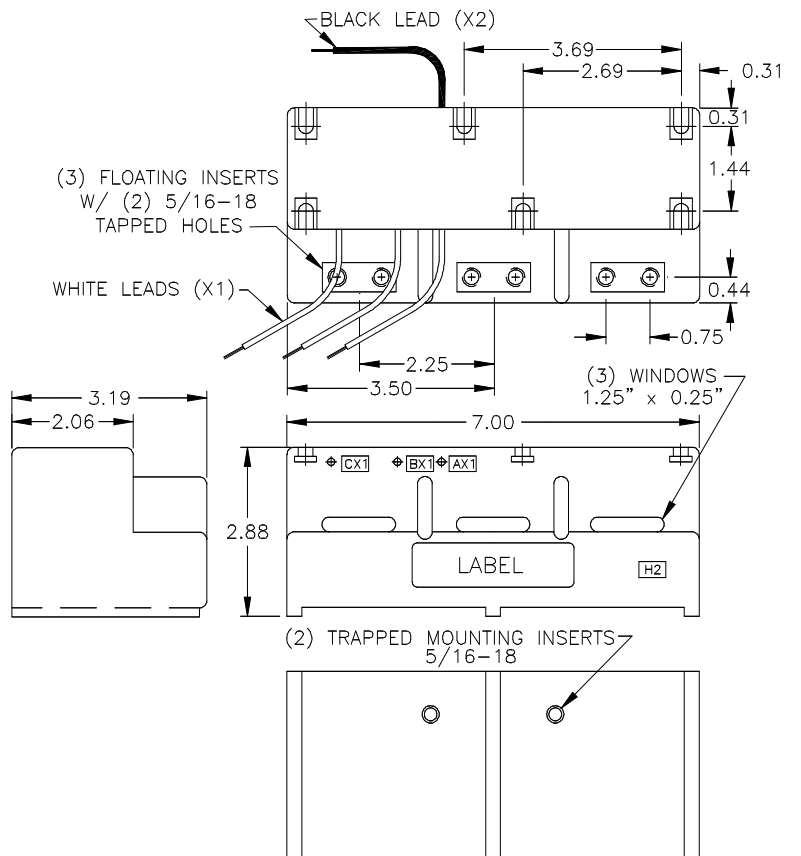
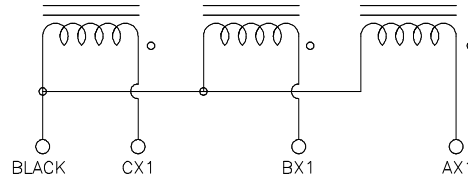
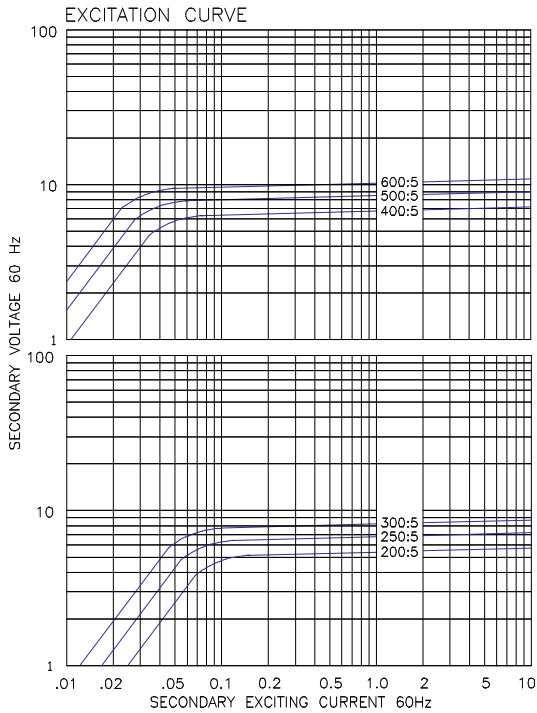
Manufactured to meet the requirements of ANSI/IEEE C57.13.  
Classified by U.L. in accordance with IEC 44-1

### Model 3P9

Catalog Number	Current Ratio	V.A. $\pm$ 1% Class	Secondary Winding Resistance ( $\Omega$ @ 75 °C)
3P9-201	200:5	12.5	0.062
3P9-251	250:5	15.0	0.077
3P9-301	300:5	20.0	0.092
3P9-401	400:5	12.5	0.117
3P9-501	500:5	15.0	0.146
3P9-601	600:5	20.00	0.176



# Model 3P9



CAUTION: Maximum torque on mounting inserts is 75 inch-pounds. DO NOT OVERTIGHTEN.

[GEGridSolutions.com](http://GEGridSolutions.com)

Grid-AIS-L4-ITL\_Model\_3P9-1538-2017\_05-EN. © Copyright 2017. General Electric Company and Instrument Transformers LLC reserve the right to change specifications of described products at any time without notice and without obligation to notify any person of such changes.

### Worldwide Contact Center

Web: [www.GEGridSolutions.com/contact](http://www.GEGridSolutions.com/contact)

Phone: +44 (0) 1785 250 070

USA and Canada: +1 (0) 800 547 8629

Europe, Middle East and Africa: +34 (0) 94 485 88 00

