

# Model PT6-2-125

## Indoor Voltage Transformer ANSI Group 2 Medium Voltage

### Accuracy Class

0.3 WXYZ 1.2ZZ at 100 % rated voltage with 120V based ANSI burden.

0.3 WXY, 1.2Z at 58 % rated voltage with 69.3V based ANSI burden..

### Frequency

60 Hz.

### Maximum System Voltage

25.5 kV, BIL 125 kV.

### Thermal Rating

1,500 VA 30 °C. amb.  
1,000 VA 55 °C. amb.

### Weight

Approximate weight 125 lbs.



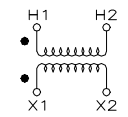
Two Bushings

#### REGULATORY AGENCY APPROVALS



Manufactured to meet the requirements of ANSI/IEEE C57.13.

### Product Data PT6-2

	Primary Voltage (a)	Ratio	Secondary Voltage	125 kV BIL Catalog Numbers
	18,000	150:1	120	PT6-2-125-183
	21,000	175:1	120	PT6-2-125-213
	24,000	200:1	120	PT6-2-125-243

Approved for revenue metering in Canada by industry Canada, Approval No. AE-0676 Rev.2

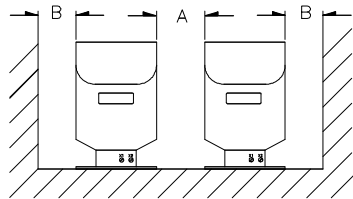
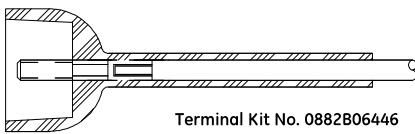
(a) Also available are other ratios and frequencies, double secondaries and units meeting IEC 44-2.

Note: It is recommended that the system line-to-line voltage not exceed transformer maximum system voltage level.



## Model PT6-2-125 Model PT6-2-125 ANSI Group 2

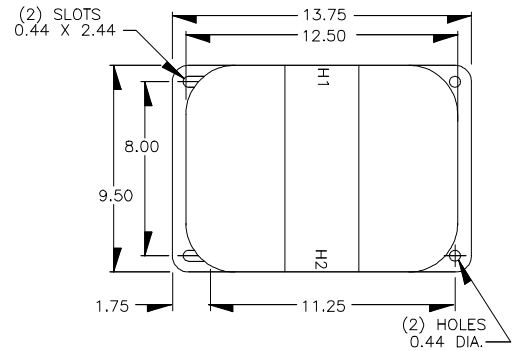
- Primary terminals are 3/8-16 brass screws with one flatwasher and lockwasher.
- Secondary terminals are 1/4-20 brass screws with one flatwasher and lockwasher.
- The core and coil assembly is vacuum encapsulated in polyurethane resin.
- Primary fuses are not supplied, but are recommended. Use 25 kV, 0.5E rated fuses.
- A test card is provided with each unit
- An insulated primary terminal kit part number 0882B06446 is an available option. Includes 2 each 3/8-16 terminals, terminal boots and 48" of No. 6 insulated lead wire. This lead wire is not fully insulated; therefore proper clearances and support methods must be implemented by the user. Lead wire must also be directed away from all surfaces of the transformer to avoid any partial discharge between the lead wire and the transformer.



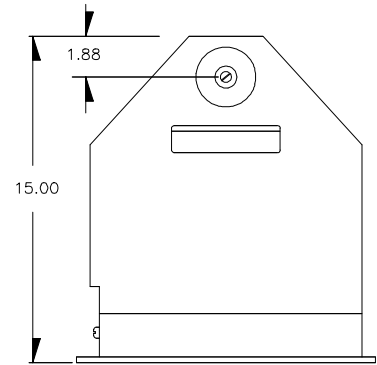
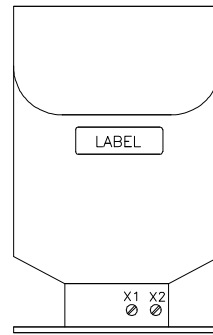
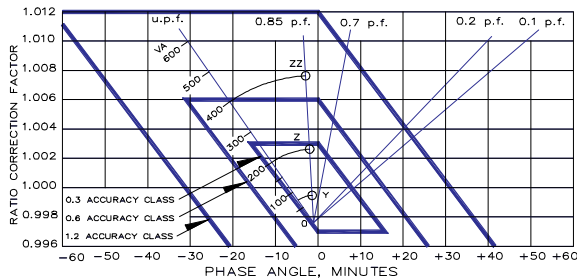
## Recommended Minimum Spacings

A = Unit to Unit = 1.50" minimum. (Open Delta Connection)  
 B = HV to Ground in Air = 8.50" minimum.

*Recommended spacings are for guidance only. User needs to select appropriate values to assure performance for high potential test, impulse test, high humidity, partial discharge, high altitude, specific configurations and other considerations.*



## Circle Diagram



The circle diagram can be used to predict the performance of a transformer for various loads and power factors. A convenient scale of volt-ampere is shown on the unity power factor line (u.p.f) and commences at the zero or no-load locus. To use the diagram, measure the known V.A. and scribe an arc about the "Zero" locus of a length that contains the angle of the burden power factor. The point at which the arc terminates is the error locus in phase angle minutes and ratio correction factor.

## GEGridSolutions.com

Grid-AIS-L4-ITL\_Model\_PT6-2-1564-2017\_07-EN. © Copyright 2017. General Electric Company and Instrument Transformers LLC reserve the right to change specifications of described products at any time without notice and without obligation to notify any person of such changes.

## Worldwide Contact Center

Web: [www.GEGridSolutions.com/contact](http://www.GEGridSolutions.com/contact)  
 Phone: +44 (0) 1785 250 070  
 USA and Canada: +1 (0) 800 547 8629  
 Europe, Middle East and Africa: +34 (0) 94 485 88 00

