

# Model JCR-0C

**Indoor/Outdoor Current Transformer**  
**600 V, 10 kV BIL, 100 to 400 A, Window Diameters 1.125", 1.50", 2.00"**

## Application

Designed for both indoor and outdoor service. Suitable for operating meters and instruments, on both single-phase two-wire circuits and polyphase circuits.

## Weight

(Approximate)  
Transformer, without base

|                      |         |
|----------------------|---------|
| 200:5                | 6.0 lbs |
| 300:5                | 3.8 lbs |
| 400:5                | 3.3 lbs |
| Low base, add        | 0.5 lbs |
| High (EEI) base, add | 6.0 lbs |

## Insulation Level

0.6 kV; BIL 10 kV full wave

## Frequency

50-60 Hz



## Reference Drawings

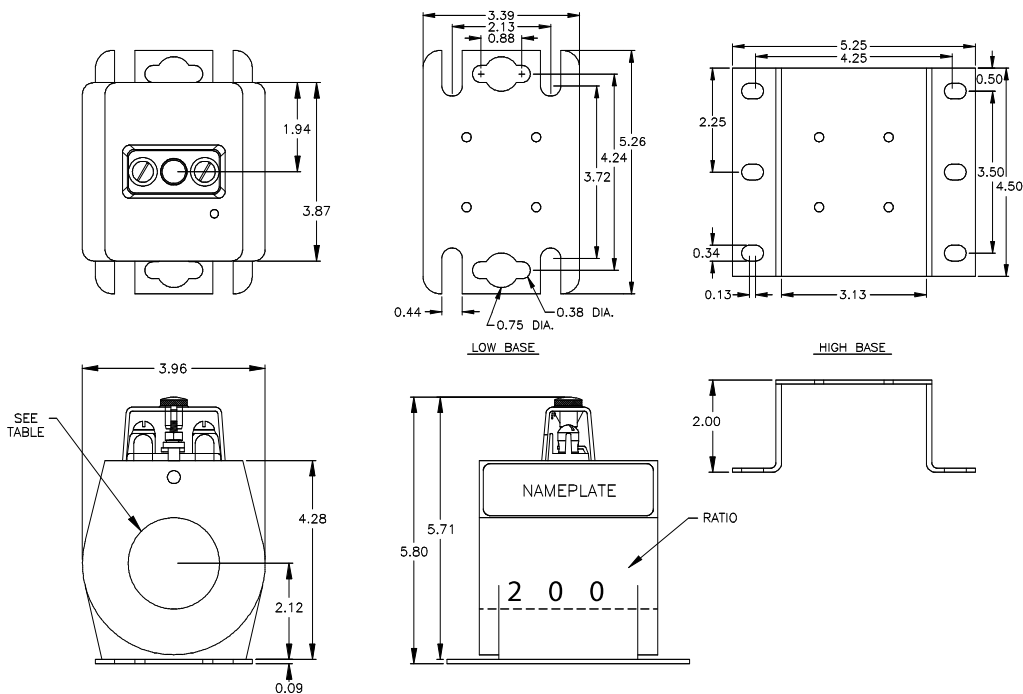
|                    |            |
|--------------------|------------|
| Outline            | 0121C33753 |
| Low Base Assembly  | 0221C36157 |
| High Base Assembly | 0221C36158 |

## Model JCR-0C Product Data

| Current Ratio<br>(Amps) Pri : Sec | ANSI Accuracy Class, 60 Hz Burden<br>Per ANSI |      |      | Continuous Thermal Current<br>Rating Factor |            | Window I.D.<br>(inches) | Catalog Number                          |  |
|-----------------------------------|---|------|------|---|------------|-------------------------|---|--|
|                                   | B0.1  | B0.2 | B0.5 | 30 °C Amb.                                  | 50 °C Amb. |                         | With Secondary<br>Hardware and<br>Cover | Without Secondary<br>Hardware and<br>Cover |
| <b>Without Base</b>               |   |      |      |   |            |                         |   |  |
| 100:5                             | 0.3   | 0.3  | 1.2  | 4.0   | 3.0        | 1.125                   | 750X134072                              | 750X134071                                 |
| 200:5                             | 0.3   | 0.3  | 0.6  | 3.0   | 2.0        | 1.50                    | 750X134053                              | 750X134052                                 |
| 300:5                             | 0.3   | 0.3  | 0.6  | 2.0   | 1.5        | 2.00                    | 750X134022                              | 750X134021                                 |
| 400:5                             | 0.3   | 0.3  | 0.6  | 2.0   | 1.5        | 2.00                    | 750X134004                              | 750X134002                                 |
| <b>With Low Base</b>              |   |      |      |   |            |                         |   |  |
| 100:5                             | 0.3   | 0.3  | 1.2  | 4.0   | 3.0        | 1.125                   | 750X134074                              | 750X134073                                 |
| 200:5                             | 0.3   | 0.3  | 0.6  | 3.0   | 2.0        | 1.50                    | 750X134055                              | 750X134054                                 |
| 300:5                             | 0.3   | 0.3  | 0.6  | 2.0   | 1.5        | 2.00                    | 750X134024                              | 750X134023                                 |
| 400:5                             | 0.3   | 0.3  | 0.6  | 2.0   | 1.5        | 2.00                    | 750X134008                              | 750X134006                                 |
| <b>With High (EEI) Base</b>       |   |      |      |   |            |                         |   |  |
| 100:5                             | 0.3   | 0.3  | 1.2  | 4.0   | 3.0        | 1.125                   | 750X134076                              | 750X134075                                 |
| 200:5                             | 0.3   | 0.3  | 0.6  | 3.0   | 2.0        | 1.50                    | 750X134057                              | 750X134056                                 |
| 300:5                             | 0.3   | 0.3  | 0.6  | 2.0   | 1.5        | 2.00                    | 750X134026                              | 750X134025                                 |
| 400:5                             | 0.3   | 0.3  | 0.6  | 2.0   | 1.5        | 2.00                    | 750X134012                              | 750X134010                                 |



## JCR-OC Dimensions



### Construction and Insulation

The core and coil are encapsulated in a polyurathane resin. This tough material has excellent electrical and mechanical properties over a wide temperature range, has low water absorption and is resistant to oil and a variety of chemicals.

### Core and Coils

The core is made from high quality grain oriented silicon steel, annealed under rigidly controlled factory conditions. The secondary winding is made of heavy enameled copper wire. The secondary windings are evenly distributed around the core for maximum accuracy and resistance to stray fields from adjacent conductors.

### Terminals

Secondary terminals are tin plated brass, compression type with a 0.275" diameter cross-hole for wiring and a 1/4-28 clamp screw. A shorting device is provided and interlocked to the terminal cover. The terminal cover is made of a clear plastic. Provision is made for sealing the cover.

### Polarity

The H1 polarity mark is molded into the transformer body, above the window at one end. The X1 polarity mark is also molded into the body adjacent to the secondary terminal. Both are identified with a white dot.

### Primary Window

The window has ample size to accommodate cables of current-carrying capacity equal to or greater than the transformer's thermal current rating.

### Nameplates

The nameplate is laser engraved aluminum. It is attached to the side of the unit and has provision for attaching the user's identifying tag. The nominal current rating is marked on both sides of the unit in large numerals.

### Baseplate and Mounting

The transformer can be mounted in any position and may be suspended from the bus-bar or cable. It has provision for attaching two optional bases. Bases are made from heavy steel and plated. The high base increases the transformer height by 2 inches and meets the dimensions specified in ANSI C12.11.

### Maintenance

These transformers require no maintenance, other than occasional cleaning, if installed where air contamination is severe.

### [GEGridSolutions.com](http://GEGridSolutions.com)

Grid-AIS-L4-ITI\_Model\_JCR\_OC-1400-2017\_07-EN. © Copyright 2017. General Electric Company and Instrument Transformers LLC reserve the right to change specifications of described products at any time without notice and without obligation to notify any person of such changes.

### Worldwide Contact Center

Web: [www.GEGridSolutions.com/contact](http://www.GEGridSolutions.com/contact)

Phone: +44 (0) 1785 250 070

USA and Canada: +1 (0) 800 547 8629

Europe, Middle East and Africa: +34 (0) 94 485 88 00

