

MODELS 10WP & 189

Current Transformers Wound Primary

Application

Ammeters and wattmeters.

Frequency

50-400 Hz.

Insulation Level

0.6 kV, BIL 10 kV full wave.

Model 10WP

CATALOG NUMBER	CURRENT RATIO	ANSI METERING CLASS AT 60 Hz	
		BO.1	BO.2
10WP-0025	2.5:5	0.6	0.6
10WP-005	5:5	0.6	0.6
10WP-0075	7.5:5	0.6	0.6
10WP-010	10:5	0.6	0.6
10WP-015	15:5	0.6	0.6
10WP-020	20:5	0.6	0.6
10WP-025	25:5	0.6	0.6
10WP-030	30:5	0.6	0.6
10WP-040	40:5	0.6	0.6



Continuous Thermal Current Rating Factor

1.33A at 30°C amb.,
1.0A at 55°C amb

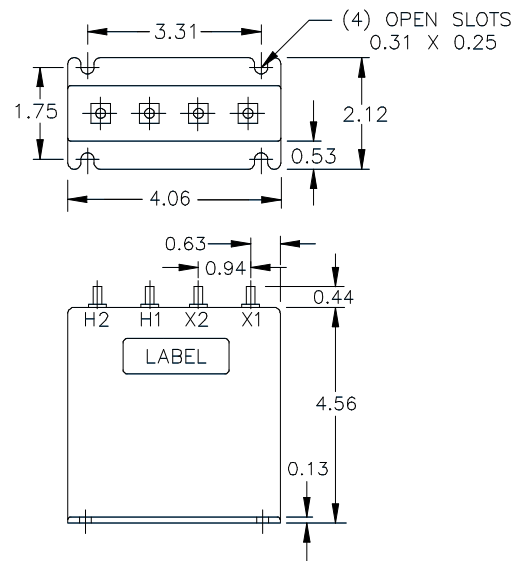
Approximate weight:
Model 10WP - 1.5 lbs.
Model 189 - 0.75 lbs.

Model 189

CATALOG NUMBER	CURRENT RATIO	ANSI METERING CLASS AT 60 Hz	
		BO.1	BO.2
189-0025	2.5:5	0.6	0.6
189-005	5:5	0.6	0.6
189-0075	7.5:5	0.6	0.6
189-010	10:5	0.6	0.6
189-015	15:5	0.6	0.6
189-020	20:5	0.6	0.6
189-025	25:5	0.6	0.6
189-030	30:5	0.6	0.6
189-040	40:5	0.6	0.6
189-050	50:5	0.6	0.6
189-060	60:5	0.6	0.6
189-075	75:5	0.6	0.6
189-080	80:5	0.6	0.6
189-101	100:5	0.6	0.6

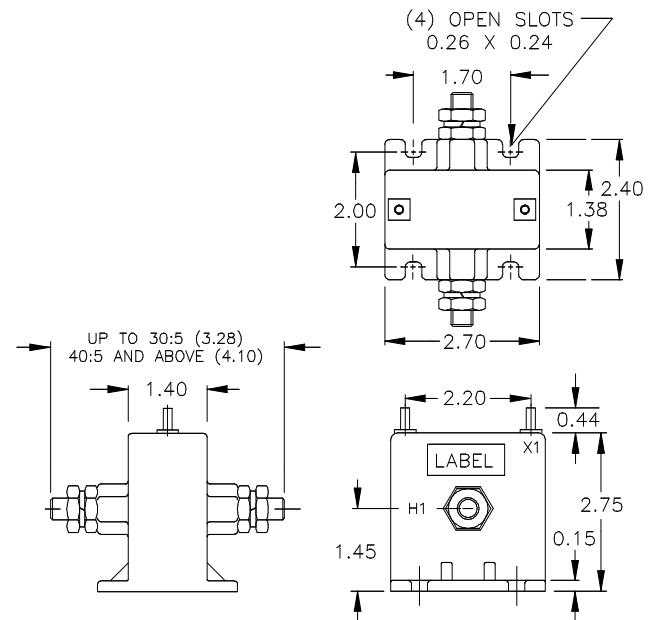
Model 10WP Wound Primary

The Model 10WP is a low ratio wound primary current transformer, suitable for primary currents up to 40 amperes. The table lists the most common current ratings. Primary terminals for the Model 10WP are: for ratios of 25:5 and below, No. 8-32 brass studs with one flatwasher and regular nut, for ratios of 30:5 and above, 1/4-20 brass studs with one flatwasher, lockers and regular nut.



Model 189 Wound Primary

The Model 189 is a low ratio wound primary current transformer, suitable for primary current up to 100 amperes. The table lists the most common current ratings. Primary terminals for the Model 189 for ratios of 30:5 and below are No. 10-32 brass screws with one lockwasher (Dimension A=3.28), for ratios 40:5 and above, 3/8-16 brass studs with one lockasher and regular nut (Dimension A=4.10).



For more information, visit
gevernova.com/grid-solutions

Instrument Transformers LLC reserve the right to change specifications of described products at any time without notice and without obligation to notify any person of such changes.

© 2025 GE Vernova and/or its affiliates. All rights reserved. GE and the GE Monogram are trademarks of General Electric Company used under trademark license.



GE VERNOVA

GEA-N50352
English
251008