

MODEL 2VT460

3 Phase Voltage Transformer



REGULATORY AGENCY APPROVALS



Manufactured to meet the requirements of ANSI/IEEE C57.13.
Classified by U.L. in accordance with IEC 44-1

Frequency

60 Hz.

Standard Secondary Voltage

120 Volts

Insulation Level

600 Volt, 10 kV BIL full wave.

Accuracy Class: (Per Phase)

0.6 W, 1.2 X

Thermal Rating: (Per Phase)

150 VA at 30°C. amb., 100 VA at 55°C. amb.

Terminals are brass screws No. 8-32 with one lockwasher and flatwasher.

Approximate weight 15.5 lbs.



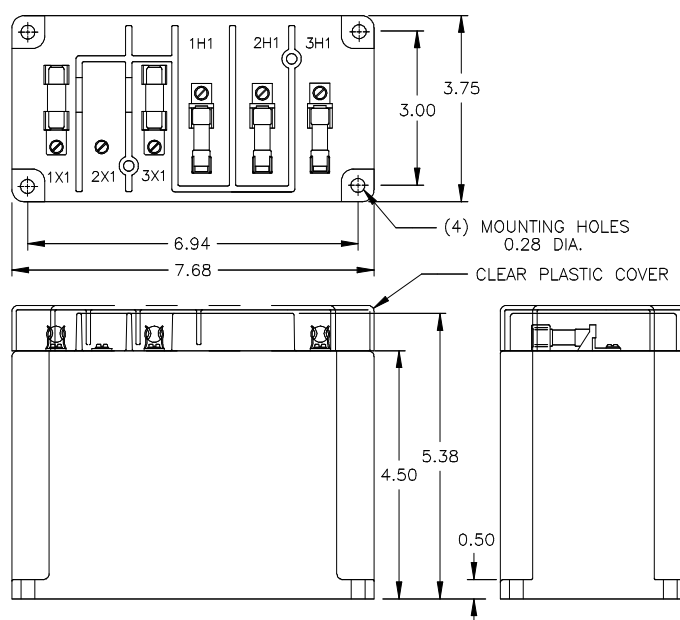
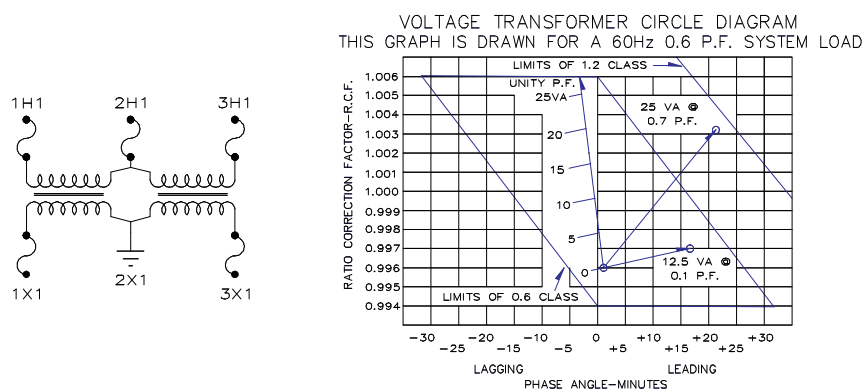
Clear Plastic Cover

Data Table

CATALOG NUMBER		VOLTAGE RATING	TURNS RATIO	REC. PRIMARY FUSE RATING
PRIMARY FUSES ONLY	PRIMARY AND SECONDARY FUSES			
2VT460-069F	2VT460-069FF	69.3:120	0.58:1	5.0
2VT460-120F	2VT460-120FF	120:120	1:1	4.0
2VT460-208F	2VT460-208FF	208:120	1.73:1	2.0
2VT460-240F	2VT460-240FF	240:120	2:1	2.0
2VT460-288F	2VT460-288FF	288:120	2.4:1	1.5
2VT460-300F	2VT460-300FF	300:120	2.5:1	1.5
2VT460-480F	2VT460-480FF	480:120	4:1	1.0
2VT460-600F	2VT460-600FF	600:120	5:1	0.75

Model 2VT460

- The Core and coil assembly is encased in a thermoplastic shell and filled with resin.
- Transformers are designed for open delta connection.
- Primary fuses are type CC rejection style. It is desirable to use a 1.6 amp BBS type or equal fuse in secondary to protect the transformer.
- Models designed specifically for 50 Hz operation are available with reduced performance. Consult factory for details.
- This page contains a circle diagram for the estimation of the errors or other than rated burdens.



For more information, visit
gevernova.com/grid-solutions

Instrument Transformers LLC reserve the right to change specifications of described products at any time without notice and without obligation to notify any person of such changes.

© 2025 GE Vernova and/or its affiliates. All rights reserved. GE and the GE Monogram are trademarks of General Electric Company used under trademark license.



GE VERNOVA

GEA-N50707
English
250916