

MODELS 3CPTDV3-60-75 & 3CPTDV5-95-75

Control Power Transformer Medium Voltage



For Vertical Mounting

Application

To provide control power in medium voltage switchgear.

Frequency

60 Hz.

Insulation Level

5 kV & 15 kV Class,
60 kV & 95 kV BIL, 150°C

Thermal Rating

75 kVA at 30°C. ambient.
64.3 kVA at 55°C. ambient.

H.V. Terminals are No. 8-2 connector.
L.V. Terminals are 1/2-13 brass studs.

Windings are encapsulated in epoxy resin. Mounting base is steel.

Assembly is varnish coated.
(6) Mounting slots are 0.37 × 0.75, Typ.

Low voltage available, 208 Y/120 V.

For indoor use.

Approximate weight 2,000 lbs.

Standard Typical Voltage - Consult Factory for Specials

Models 3CPTDV3-60-75 & 3CPTDV5-95-75

**CATALOG NUMBER	PRIMARY VOLTAGE	*FUSE RATING
3CPTDV3-60-75-4161 **	4,160	25E
3CPTDV3-60-75-482**	4,800	20E
3CPTDV5-95-75-722**	7,200	20E
3CPTDV5-95-75-842**	8,400	20E
3CPTDV5-95-75-123**	12,000	10E
3CPTDV5-95-75-1242**	12,470	10E
3CPTDV5-95-75-1322**	13,200	10E
3CPTDV5-95-75-1382**	13,800	10E

*Note all fuse rating are based on NEC transformer overcurrent protection recommendations. Specific applications may require other other ratings.

**For 1 ± 7 1/2% taps use suffix "A" after Catalog No.

**For 2 ± 2 1/2% taps use suffix "B" after Catalog No.



GE VERNOVA



Models 3CPTDV3-60-75 & 3CPTDV5-95-75 - for Vertical Mounting

PRIMARY VOLTS	CONNECT
107.5%	1 - 2
100%	2 - 3
92.5%	3 - 4

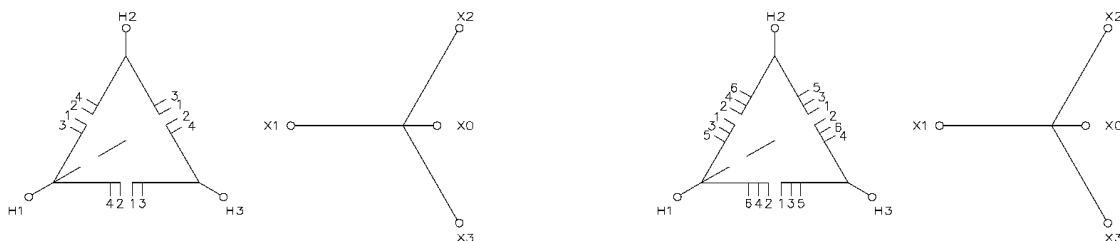
1 $\pm 7\frac{1}{2}\%$ PRIMARY TAPS
SUFFIX "A"

Connection Diagrams

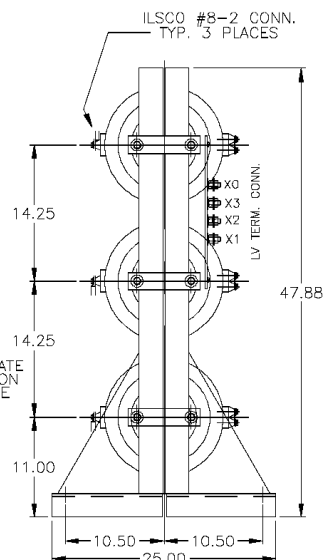
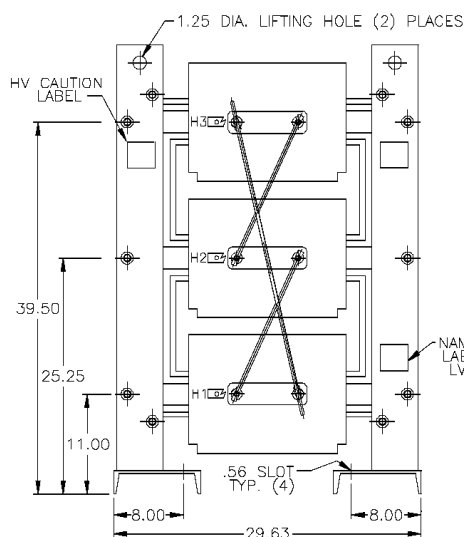
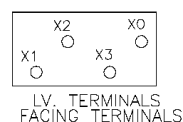
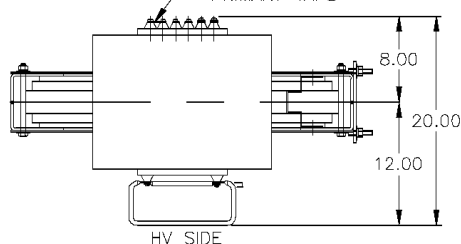
PRIMARY VOLTS	CONNECT
105%	1 - 2
102.5%	2 - 3
100%	3 - 4
97.5%	4 - 5
92.5%	5 - 6

2 $\pm 2\frac{1}{2}\%$ PRIMARY TAPS
SUFFIX "B"

For vertical mounting



NOTE: LV TERM. CONN. NOT SHOWN THIS VIEW
PRIMARY TAPS



For more information, visit
gevernova.com/grid-solutions

Instrument Transformers LLC reserve the right to change specifications of described products at any time without notice and without obligation to notify any person of such changes.

© 2025 GE Vernova and/or its affiliates. All rights reserved. GE and the GE Monogram are trademarks of General Electric Company used under trademark license.



GE VERNOVA

GEA-N50605
English
251017