

MODEL 3P56

Current Transformer

Window Diameter 2.13"



REGULATORY AGENCY APPROVALS



E93779

Manufactured to meet the requirements of ANSI/IEEE C57.13.
Classified by U.L. in accordance with IEC 44-1

Application

3 phase metering and other switchboard applications.

Features

50-400 Hz.

Insulation level

600 Volts, 10 kV BIL full wave.

Terminals are brass studs No. 8-32 with one flatwasher, lockwasher and regular nut.

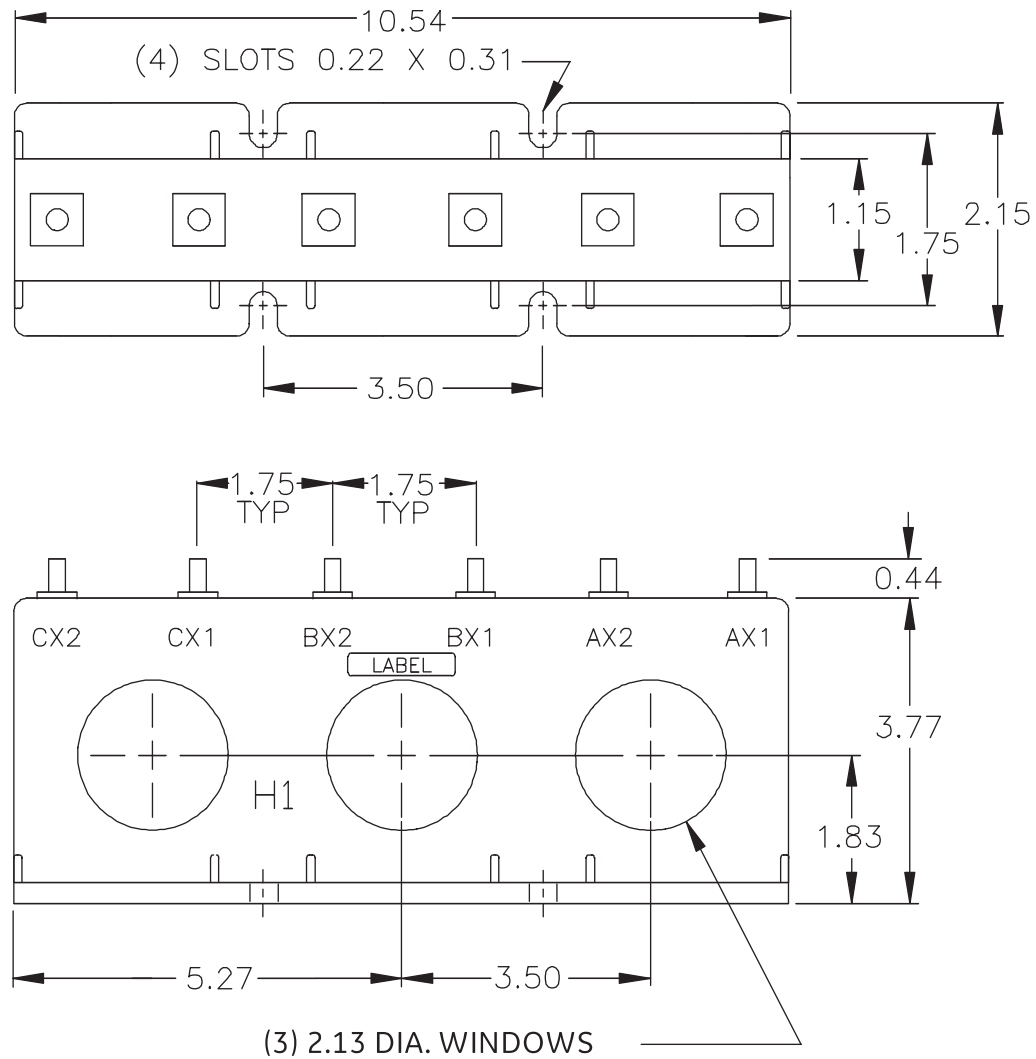
Transformers can be ordered with secondary leads configured in various ways (consult factory).

Approximate weight 2.0 lbs.

Model 3P56

CATALOG NUMBER	CURRENT RATIO	ACCURACY AT 60 Hz	BURDEN VA 60 Hz
3P56-500	50:5	± 3%	0.5
3P56-750	75:5	±1%	0.5
3P56-101	100:5	±1%	1.0
3P56-151	150:5	±1%	2.5
3P56-201	200:5	±1%	4.0
3P56-251	250:5	±1%	6.0
3P56-301	300:5	±1%	7.5
3P56-401	400:5	±1%	10.0
3P56-501	500:5	±1%	12.5
3P56-601	600:5	±1%	15.0
3P56-751	750:5	±1%	7.0
3P56-801	800:5	±1%	8.0
3P56-102	1000:5	±1%	10.0
3P56-122	1200:5	±1%	12.5

Model 3P56



For more information, visit
governova.com/grid-solutions

Instrument Transformers LLC reserve the right to change specifications of described products at any time without notice and without obligation to notify any person of such changes.

© 2025 GE Vernova and/or its affiliates. All rights reserved. GE and the GE Monogram are trademarks of General Electric Company used under trademark license.



GE VERNOVA

GEA-N50466
 English
 251013