

MODEL 3VTL460

3-Phase Voltage Transformer

For Line-to-Line Connection

Frequency

60 Hz.

Standard Secondary Voltage

120 Volts line-to-line

Insulation Level

600 Volt, 10 kV BIL full wave.

Model 3VTL460

CATALOG NUMBER	LINE TO LINE VOLTAGE RATING	TURNS RATIO	REC. PRIMARY FUSE RATING
3VTL460-120	120:120	1:1	4.0
3VTL460-208	208:120	1.73:1	2.0
3VTL460-240	240:120	2:1	2.0
3VTL460-288	288:120	2.4:1	1.5
3VTL460-480	480:120	4:1	1.0
3VTL460-600	600:120	5:1	0.75



Clear Plastic Cover

REGULATORY AGENCY APPROVALS



Manufactured to meet the requirements of ANSI/IEEE C57.13. Classified by U.L. in accordance with IEC 44-1

Accuracy Class: (Per Phase)

0.6 W, 1.2 X at 60 Hz.

Thermal Rating: (Per Phase)

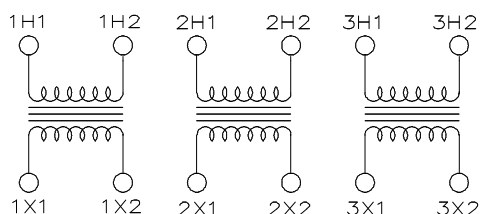
150 VA at 30°C. amb., 100 VA at 55°C. amb.

The primary and secondary terminals are No. 8-32 screws into 1/2" deep brass inserts and fitted with one lockwasher and flatwasher.

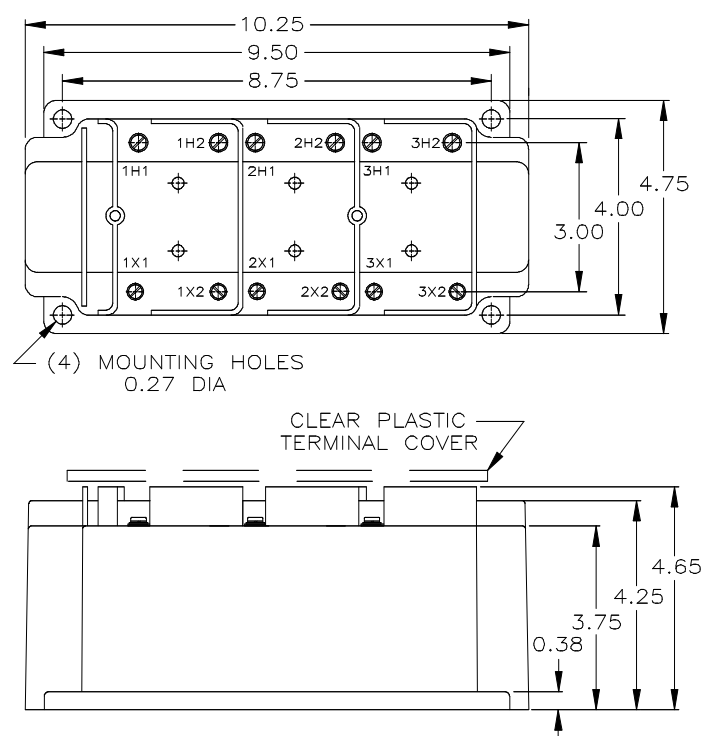
Approximate weight 24 lbs.

Model 3VTL460

- Model 3VTL460 is an assembly of three transformers in one case.
- The core and coil assembly is encased in a thermoplastic shell and filled with resin
- These transformers are designed for operation line to line. All terminals are accessible.
- Spacing between live parts per U.L. 1558.
- See page 7 of this section for a circle diagram for the estimation of the errors for other than rated burdens. See page 27 in this section for a description of its use.
- The transformer has a clear plastic cover.



Connection Diagram



For more information, visit
gevernova.com/grid-solutions

Instrument Transformers LLC reserve the right to change specifications of described products at any time without notice and without obligation to notify any person of such changes.

© 2025 GE Vernova and/or its affiliates. All rights reserved. GE and the GE Monogram are trademarks of General Electric Company used under trademark license.



GE VERNOVA

GEA-N50427
 English
 250916