

# MODEL 465

## Voltage Transformer



REGULATORY AGENCY APPROVALS

 E93779  LR89403

Manufactured to meet the requirements of ANSI/IEEE C57.13.  
Classified by U.L. in accordance with IEC 44-1

### Application

60 Hz.

### Standard Secondary Voltage

120 Volts.

### Insulation Level

600 Volt, 10 kV BIL full wave.

### Accuracy Class:

0.6 W, 1.2 X at 60 Hz.

### Thermal Rating:

150 VA at 30°C. amb.

100 VA at 55°C. amb.

Terminals are brass studs No. 10-32 with one lockwasher, flatwasher and regular nut.

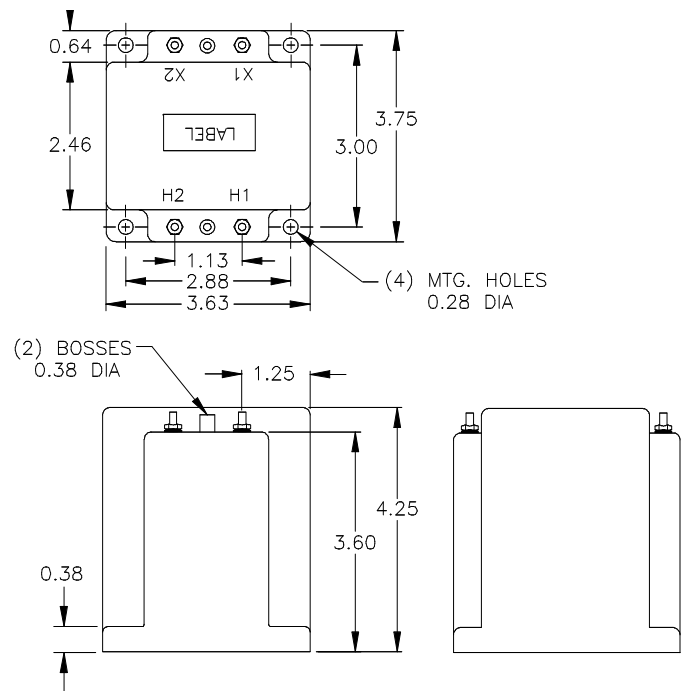
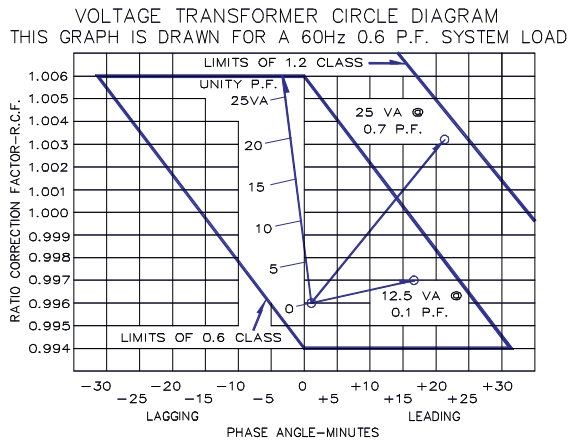
Approximate weight 7.75 lbs.

### Model 465

| CATALOG NUMBER | VOLTAGE RATIO | URNS RATIO | REC. PRIMARY FUSE RATING |
|----------------|---------------|------------|--------------------------|
| 465-069        | 69.3:120      | 0.58:1     | 5.0                      |
| 465-120        | 120:120       | 1:1        | 4.0                      |
| 465-208        | 208:120       | 1.73:1     | 2.0                      |
| 465-240        | 240:120       | 2:1        | 2.0                      |
| 465-277        | 277:120       | 2.31:1     | 2.0                      |
| 465-288        | 288:120       | 2.4:1      | 1.5                      |
| 465-300        | 300:120       | 2.5:1      | 1.5                      |
| 465-346        | 346:120       | 2.88:1     | 1.5                      |
| *465-480       | *480:120      | 4:1        | 1.0                      |
| *465-600       | *600:120      | 5:1        | 0.75                     |

## Model 465

- The core and coil assembly is encased in a thermoplastic shell and filled with resin.
- These transformers are designed for operation line-to-line. They may also be operated line-to-ground or line-to-neutral at reduced voltage, (58% of rated volts).
- It is desirable to use a 1.6 amp fuse in the secondary to protect the transformer.
- With two exceptions these transformer are ANSI C57.13 group 1. Those marked \* are group 2.
- Models designed specifically for 50Hz operation are available with reduced performance. Consult factory for details.
- This page contains a circle diagram for the estimation of the errors for other than rated burdens.
- See page 27 in this section for a description of its use.
- Each transformer has two plastic terminal cover.



For more information, visit  
[gevernova.com/grid-solutions](https://www.gevernova.com/grid-solutions)

Instrument Transformers LLC reserve the right to change specifications of described products at any time without notice and without obligation to notify any person of such changes.

© 2025 GE Vernova and/or its affiliates. All rights reserved. GE and the GE Monogram are trademarks of General Electric Company used under trademark license.



GE VERNOVA

GEA-N50349  
English  
251008