

MODEL 56

Current Transformer

Window Diameter 2.06"



Models 56RT & 56RL Shown



Application

With ammeters, wattmeters, and cross current compensation.

Frequency

50-400 Hz.

Insulation Level

600 Volt, 10 kV BIL full wave.

Flexible leads are UL 1015, 105 °C, CSA approved, #16 AWG, 24" long.

Non-standard, lead length can be specified.

Terminals are brass studs No. 8-32 with one flatwasher, lockwasher and regular nut.

SFT case styles also available as SFL with leads.

Approximate weight 0.6 lbs.

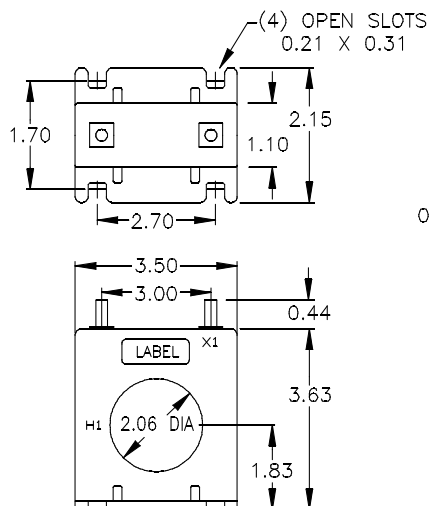
Data Table: Model 56

CATALOG NUMBER	CURRENT RATIO	ACCURACY AT 60 Hz	BURDEN VA AT 60 Hz
56**-500	50:5	±3%	0.5
56**-750	75:5	±1%	0.5
56**-101	100:5	±1%	1.0
56**-151	150:5	±1%	2.5
56**-201	200:5	±1%	4.0
56**-251	250:5	±1%	6.0
56**-301	300:5	±1%	7.5
56**-401	400:5	±1%	10.0
56**-501	500:5	±1%	12.5
56**-601	600:5	±1%	15.0
56**-751	750:5	±1%	7.0
56**-801	800:5	±1%	8.0
56**-102	1,000:5	±1%	10.0
56**-122	1,200:5	±1%	12.5

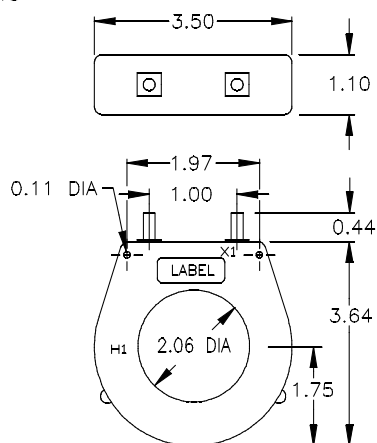
**Note: When ordering, prefix Cat No. with model designation required i.e. 56RL—101, 56RBL—251, etc.

Model 56

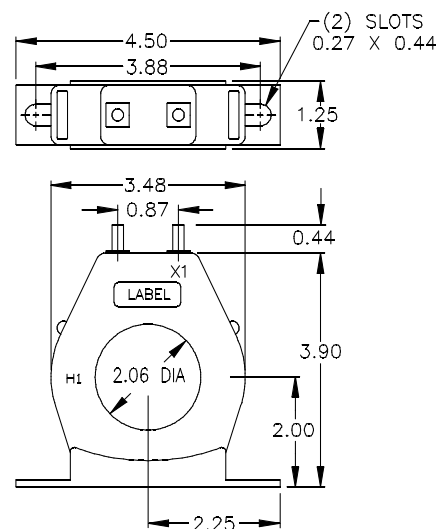
56SFT



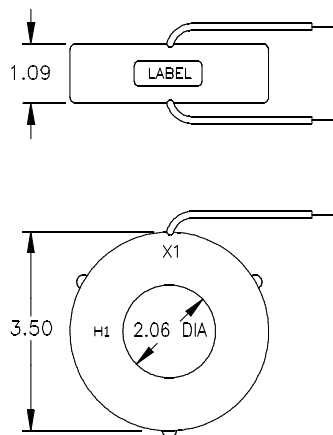
Model 56RT



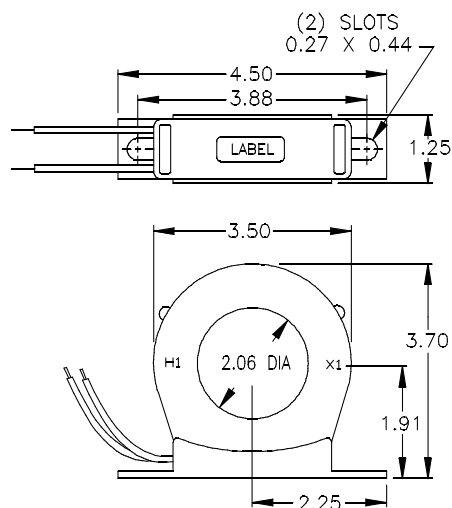
Model 56RBT



Model 56RL



Model 56RBL



For more information, visit
gevernova.com/grid-solutions

Instrument Transformers LLC reserve the right to change specifications of described products at any time without notice and without obligation to notify any person of such changes.

© 2025 GE Vernova and/or its affiliates. All rights reserved. GE and the GE Monogram are trademarks of General Electric Company used under trademark license.



GE VERNOVA

GEA-N50608
English
250911