

MODEL CPT3-60-1.5

Medium Voltage Control Power Transformer



Shown without Fuses

REGULATORY AGENCY APPROVALS



Application

To provide control power in distribution equipment and motor starters.

Frequency

See below.

Insulation Level

5 kV, 60 kV BIL full wave.

Thermal Factor

1.5 kVA at 30°C ambient.

Primary and secondary terminals are brass screws No. 10-32 with one flatwasher and lockwasher.

Windings are encapsulated in epoxy resin.

Mounting base is steel.

Assembly is varnish coated.

Corrosion resistant mounting base provided.

For indoor use.

Approximate weight 54 lbs.

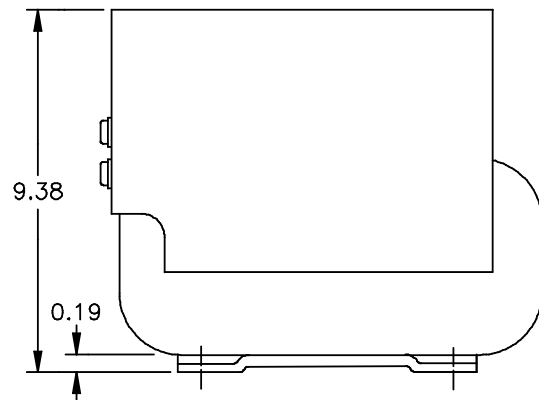
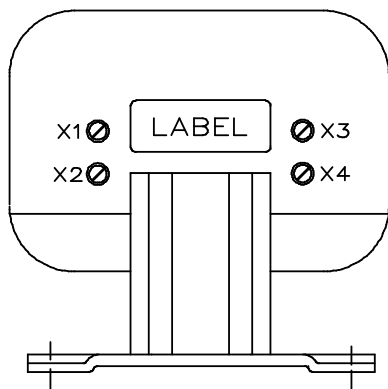
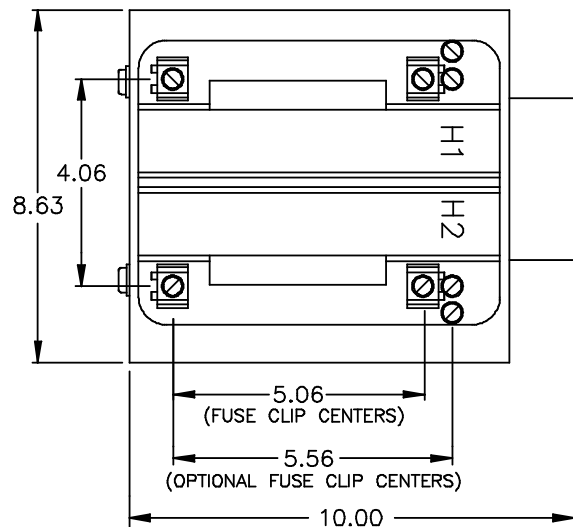
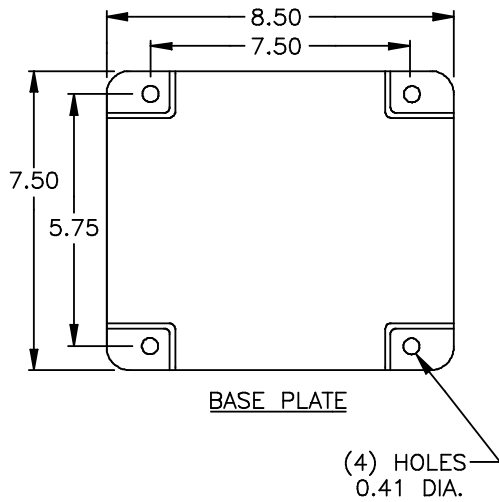
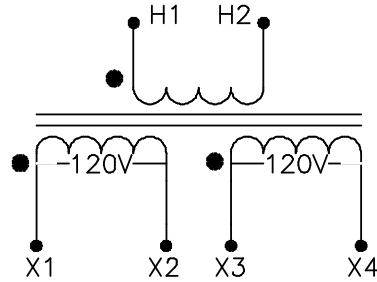
Model CPT3-60-1.5

*CATALOG NUMBER	PRIMARY VOLTAGE	RATIO	SECONDARY VOLTAGE	FREQUENCY	PRIMARY FUSE
CPT3-60-1.5-242FF	2400 V	20:1	120V/240 V	60 Hz	3E
CPT3 -60-1.5 -332FF	3300 V	30:1	110V/220 V	50 Hz	2E
CPT3-60-1.5 -4161FF	4160 V	34.7:1	120V/240 V	60 Hz	2E
CPT 3-60-1.5 -482FF	4800 V	40:1	120V/240 V	60 Hz	2E

**For fuse clips only, change FF to CC.*

Model CPT3-60-1.5

CONNECTION DIAGRAM



For more information, visit
gevernova.com/grid-solutions

Instrument Transformers LLC reserve the right to change specifications of described products at any time without notice and without obligation to notify any person of such changes.

© 2025 GE Vernova and/or its affiliates. All rights reserved. GE and the GE Monogram are trademarks of General Electric Company used under trademark license.



GE VERNOVA

GEA-N50533
 English
 251008