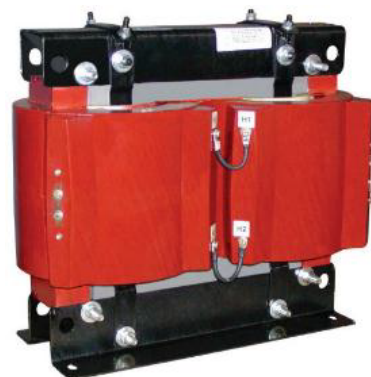


MODEL CPT3-60-25

Medium Voltage Control Power Transformer



Application

To provide control power in medium voltage switchgear.

Frequency

60 Hz.

Insulation Level

5 kV Class.
60 kV BIL full wave.

Thermal Rating

25 kVA at 30°C ambient.
21.5 kVA at 55°C ambient.

Primary terminals are brass screws
1/4-20 with one flatwasher and starwasher.

Secondary terminals are brass studs 1/2-13 with one flatwasher,
lockwasher and two nuts, plus series/parallel links.

Supplied with $1 \pm 7 \frac{1}{2}\%$ or $2 \pm 2 \frac{1}{2}\%$ taps above and below
nominal voltage on the primary winding.

Windings are encapsulated in epoxy resin.

Mounting base is steel.

Assembly is varnish coated.

Available as unfused only.

Self cooled.

For indoor use.

Approximate weight 411 lbs.

Model CPT3-60-25

*CATALOG NUMBER	PRIMARY VOLTAGE	RATIO	SECONDARY VOLTAGE	*FUSE RATING
CPT3-60-25-242**	2400V	20:1	120/240 V	25E
CPT3-60-25-4161**	4160V	34.7:1	120/240 V	15E
CPT3-60-25-482**	4800V	40:1	120/240 V	15E

**Note all fuse rating are based on NEC transformer overcurrent protection recommendations. Specific applications may require other other ratings.*

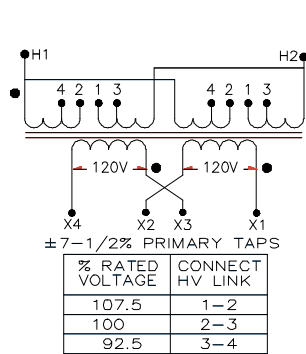
***For $1 \pm 7 \frac{1}{2}\%$ taps use suffix "A" after Catalog No.*

***For $2 \pm 2 \frac{1}{2}\%$ taps use suffix "B" after Catalog No.*

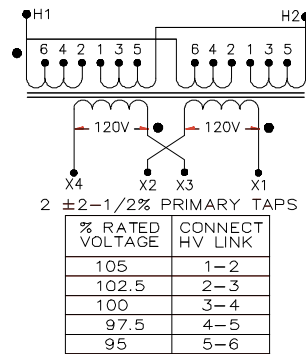


Model CPT3-60-25

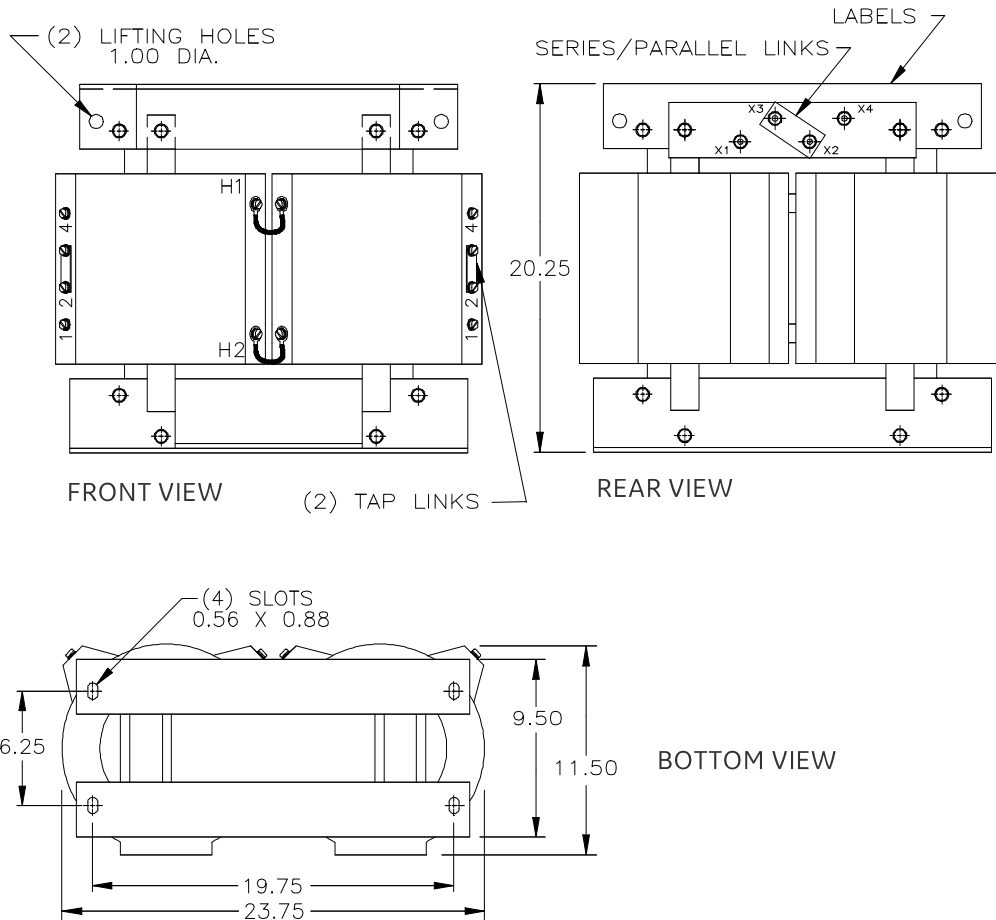
Connection Diagrams



CONNECTION DIAGRAM "A"



CONNECTION DIAGRAM "B"



For more information, visit
gevernova.com/grid-solutions

Instrument Transformers LLC reserve the right to change specifications of described products at any time without notice and without obligation to notify any person of such changes.

© 2025 GE Vernova and/or its affiliates. All rights reserved. GE and the GE Monogram are trademarks of General Electric Company used under trademark license.



GE VERNOVA

GEA-N50424
English
250916