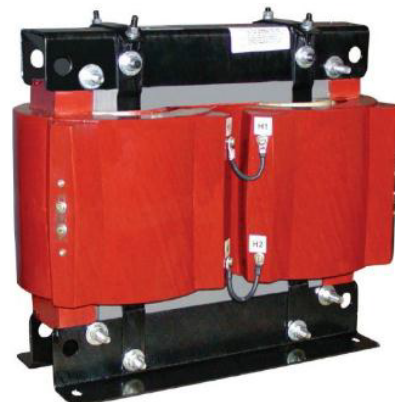


MODEL CPT3-60-37.5

Control Power Transformer Medium Voltage



Application

To provide control power in medium voltage switchgear.

Frequency

60 Hz.

Insulation Level

5 kV Class
60 kV BIL full wave.

Thermal Rating

37.5 kVA at 30°C ambient.
32.2 kVA at 55°C ambient.

Specifications

Primary terminals are brass screws 1/4-20 with one flatwasher and starwasher

Secondary terminals are 1/2-13 brass studs Supplied with $1 \pm 7 \frac{1}{2} \%$ or $2 \pm 2 \frac{1}{2} \%$ taps above and below nominal voltage on the primary winding.

Windings are encapsulated in epoxy resin.
Mounting base is steel.

Assembly is varnish coated.
Available as unfused only.

Self cooled.
For indoor use.

Approximate weight 450 lbs.

Model CPT3-60-37.5

**CATALOG NUMBER	PRIMARY VOLTAGE	RATIO	SECONDARY VOLTAGE	*FUSE RATING
CPT3-60-3 7.5-242**	2,400 V	20:1	120/240 V	40E
CPB-60-37.5-4161 **	4,160 V	34.7:1	120/240 V	20E
CPT3-60-3 7.5-482**	4,800 V	40:1	120/240 V	20E

*Note all fuse rating are based on NEC transformer overcurrent protection recommendations. Specific applications may require other other ratings.

**For $1 \pm 7 \frac{1}{2} \%$ taps use suffix "A" after Catalog No.

**For $2 \pm 2 \frac{1}{2} \%$ taps use suffix "B" after Catalog No.

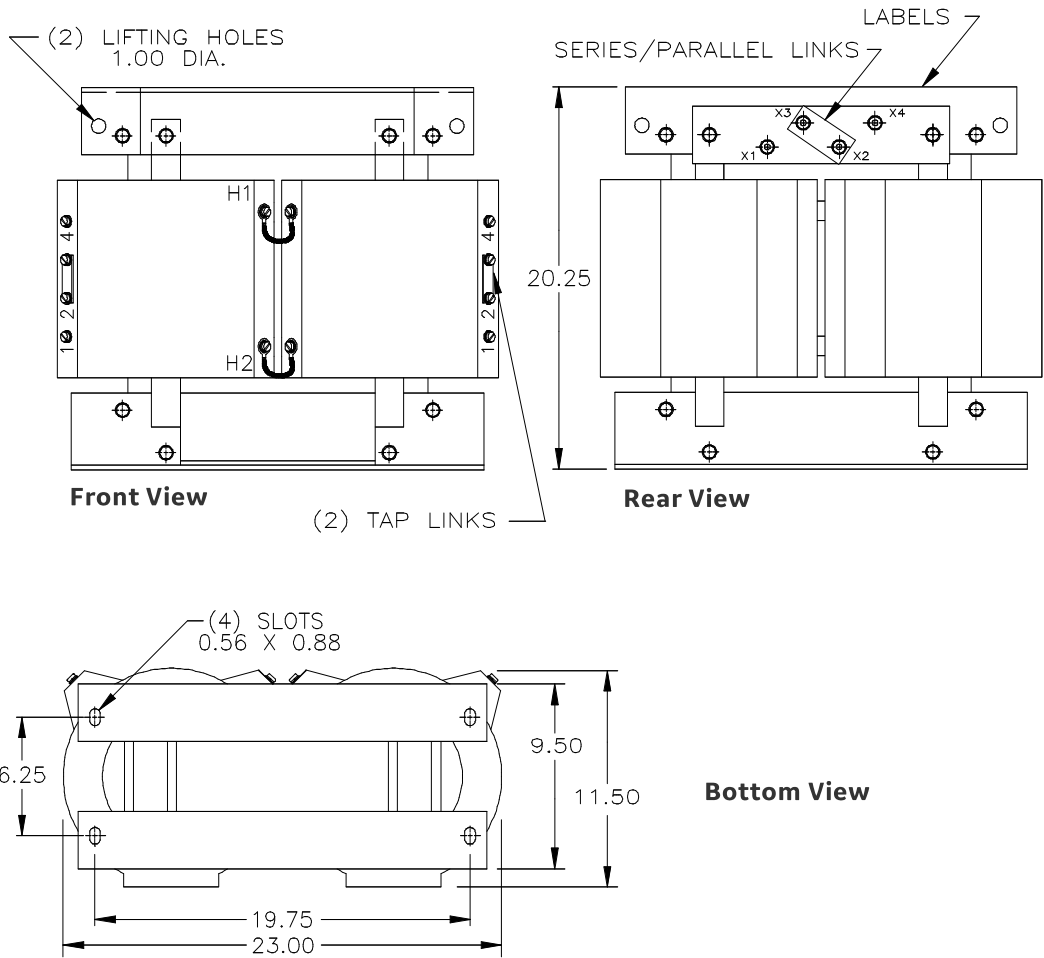
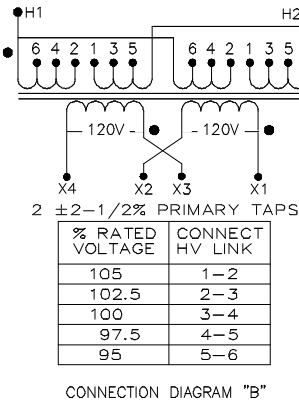
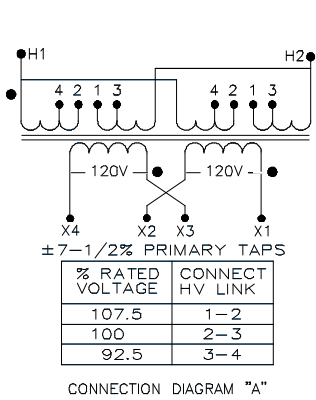


GE VERNOVA



Model CPT3-60-37.5

Connection Diagrams



For more information, visit
gevernova.com/grid-solutions

Instrument Transformers LLC reserve the right to change specifications of described products at any time without notice and without obligation to notify any person of such changes.

© 2025 GE Vernova and/or its affiliates. All rights reserved. GE and the GE Monogram are trademarks of General Electric Company used under trademark license.



GE VERNOVA

GEA-N50541
English
251008