

MODEL CPTN5-95-25

Control Power Transformer Medium Voltage



Application

To provide control power in medium voltage switchgear.

Frequency

60 Hz.

Insulation Level

15 kV Class

95 kV BIL full wave.

Thermal Rating

25 kVA at 30°C ambient.

21.5 kVA at 55°C ambient. 80°C rise.

Primary terminals are brass screws 1/4-20 with one flatwasher and starwasher

Secondary terminals are 1/2-13 brass studs.

Supplied with $1 \pm 7 \frac{1}{2}\%$ or $2 \pm 2 \frac{1}{2}\%$ taps above and below nominal voltage on the primary winding.

Windings are encapsulated in epoxy resin. Mounting base is steel. Assembly is varnish coated. Available as unfused only.

Self cooled.

For indoor use.

Approximate weight 450 lbs.

Model CPTN5-95-25

**CATALOG NUMBER	PRIMARY VOLTAGE	RATIO	SECONDARY VOLTAGE	*FUSE RATING
CPTN5-95-25-722**	7,200 V	60:1	120/240 V	10E
CPTN5-95-25-842**	8,400 V	70:1	120/240 V	10E
CPTN5-95-25-123**	12,000 V	100:1	120/240 V	7E
CPTN5-95-25-1242**	12,470 V	104:1	120/240 V	7E
CPTN5-95-25-1322**	13,200 V	110:1	120/240 V	7E
CPTN5-95-25-1382**	13,800 V	115:1	120/240 V	7E
CPTN5-95-25-1442**	14,400 V	120:1	120/240 V	7E

*Note all fuse rating are based on NEC transformer overcurrent protection recommendations. Specific applications may require other ratings.

**For $1 \pm 7 \frac{1}{2}\%$ taps use suffix "A" after Catalog No.

**For $2 \pm 2 \frac{1}{2}\%$ taps use suffix "B" after Catalog No.

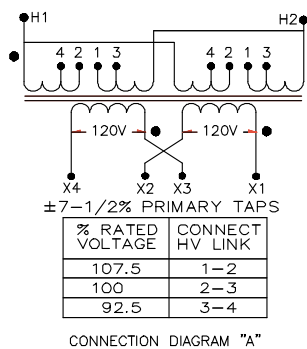


GE VERNOVA

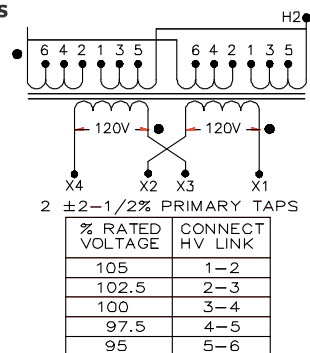


Model CPTN5-95-25

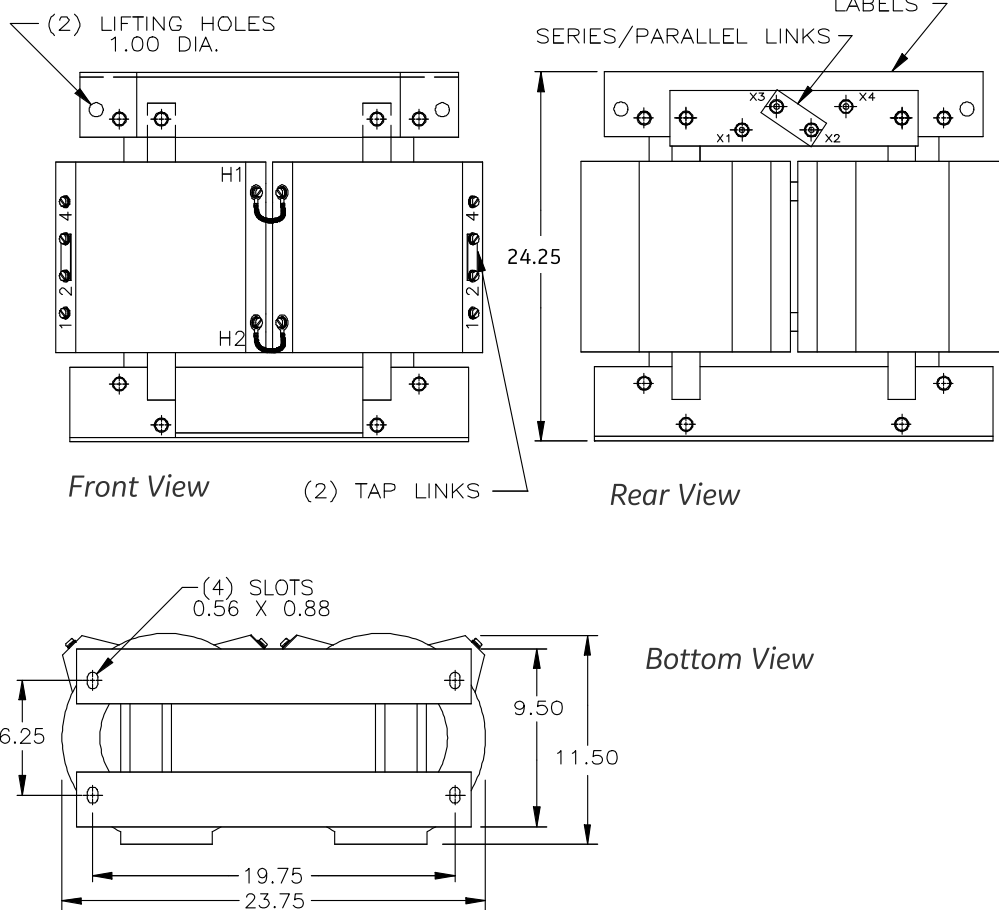
Connection Diagrams



CONNECTION DIAGRAM "A"



CONNECTION DIAGRAM "B"



For more information, visit
gevernova.com/grid-solutions

Instrument Transformers LLC reserve the right to change specifications of described products at any time without notice and without obligation to notify any person of such changes.

© 2025 GE Vernova and/or its affiliates. All rights reserved. GE and the GE Monogram are trademarks of General Electric Company used under trademark license.

GEA-N50742
English
250918



GE VERNOVA