

EB-1/2/4 TERMINAL BOARDS

Type EB-4 (600 Volts - 30 Amperes)

Where a large amount of small wiring is necessary on the back of switchboard, the terminal boards listed below will be found very convenient for attaching the wires, not to exceed No. 8 in size. Molded composition terminal boards make possible neat, compact arrangements on the back of the switchboard.

Type EB-1 and EB-2 (600 Volts - 100 Amperes)

Application

Where a high current rated block is necessary, such as in control power connections.

Description

The EB-1 is a one piece molded terminal board. Each is equipped with binding screws for circuit wire connections and a white marking strip for circuit identification. The EB-2 is of the same basic construction and dimensions as the EB-1 except that clamp (pressure) type connectors are furnished for circuit wire connections. Both the EB-1 and EB-2 will accommodate wires up to and including Number 4.

Type EB4

NO. OF STUDS ¹	CATALOG NUMBER	APPROX. SHIP. WT IN lbs (each)	DIMENSION IN INCHES (Fig.4)	
			A	B
2	2860351G1	¼	1¼	1¼
4	2860351G2	¼	2½	1¼
6	2860351G3	¼	3¾	1¼

¹ Boards for more than six circuits to be made up of combinations of 2-, 4- and 6-stud boards.

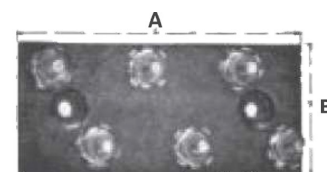


Fig. 4. 6-point terminal board, Type EB-4, Cat. 2860351G3



Fig. 5. EB-1 terminal board without cover.

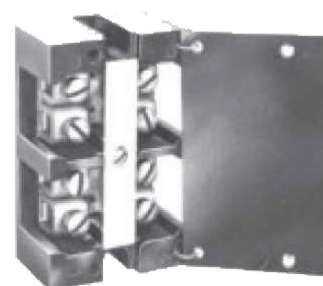


Fig. 6. EB-2 terminal board with cover.

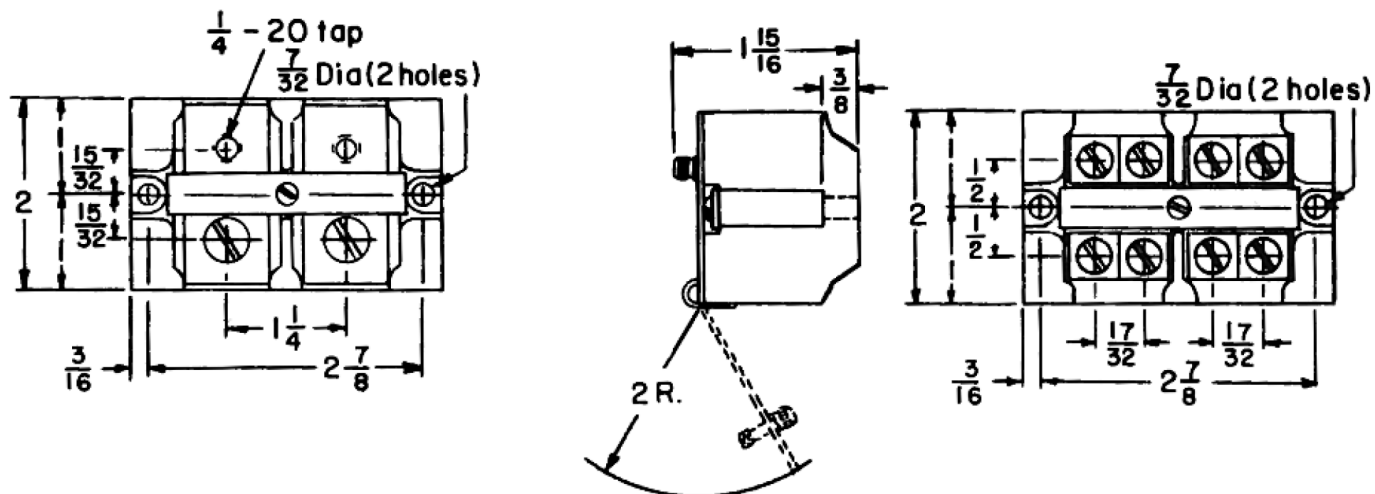


Type EB1 and EB2

NO. OF CIRCUITS	CATALOG NUMBER	TYPE	FIGURE NUMBER	TYPE OF CONNECTION	COVER
2	2648B903G-19	EB-1	7	(4) Screw	No
2	2648B903G-20	EB-1	7	(4) Screw	Yes
2	2648B903G-1	EB-2	8	(8) Pressure connector	No
2	2648B903G-3	EB-2	8	(8) Pressure connector	Yes

All EB-1 and EB-2 terminal boards furnished with white marking strip.

EB-1/2/4 Dimensions



Open Position of Cover when
furnished (EB-1 & EB-2)

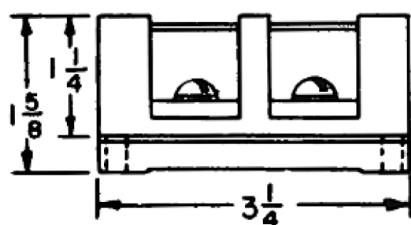


Fig. 7 Type EB-1

Note:
All dimensions in inches

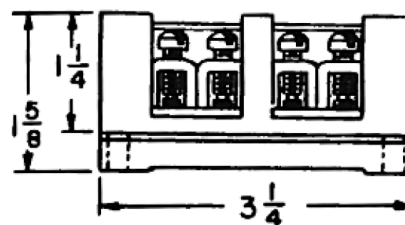


Fig. 8 Type EB-2

For more information, visit
gevernova.com/grid-solutions

Instrument Transformers LLC reserve the right to change specifications of described products at any time without notice and without obligation to notify any person of such changes.

© 2025 GE Vernova and/or its affiliates. All rights reserved. GE and the GE Monogram are trademarks of General Electric Company used under trademark license.



GE VERNOVA

GEA-N50355
English
250926