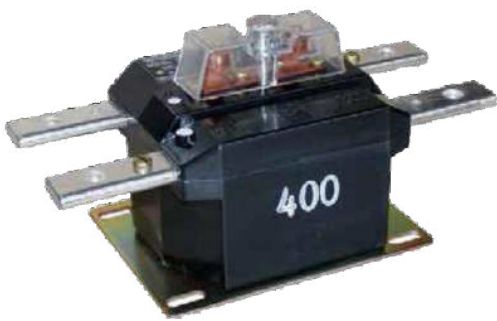


MODEL JCA-OC

Indoor Current Transformer

Wound Primary
600 V, 10 kV BIL, 50-1,200 A



Application

Designed for indoor service. Suitable for operating meters, relays and control devices.

Weight

(approximate)9 lbs

Insulation Level

0.6 kV; BIL 10 kV full wave

Frequency

50-60 Hz

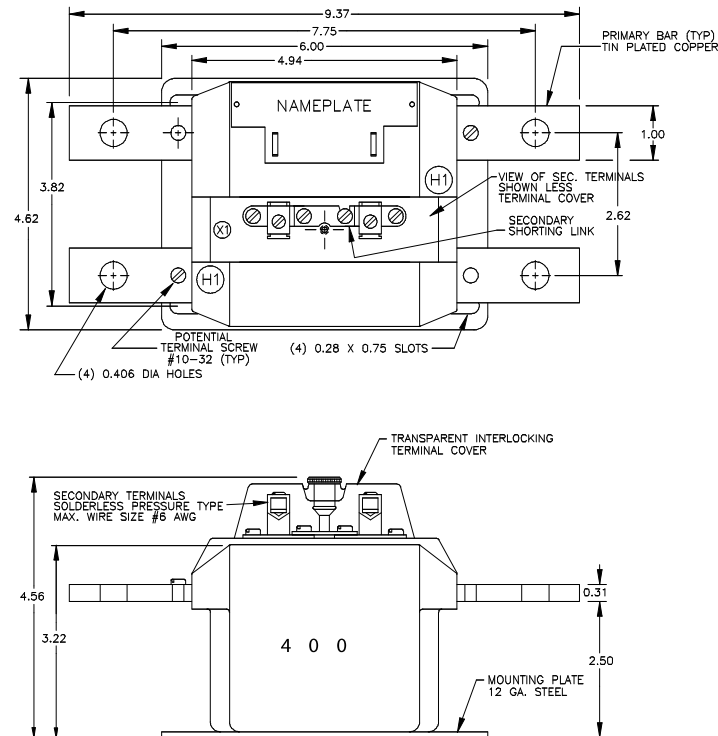
Reference Drawings

Outline
50-400 A0121C02960
500-1,200 A0121C02557

Model JCA-OC Product Data

| CURRENT RATIO (Amps) PRI: Sec | ANSI ACCURACY CLASS, 60 Hz BURDEN PER ANSI | | CONTINUOUS THERMAL CURRENT RATING FACTOR | CATALOG NUMBER |
|----------------------------------|--|------|---|----------------|
| | B0.1 | B0.2 | @ 30°C Amb. | |
| 50:5 & 50:5 | 0.3 | 0.3 | 1.5 | 750X130601 |
| 100:5 & 100:5 | 0.3 | 0.3 | 1.5 | 750X130602 |
| 150:5 & 150:5 | 0.3 | 0.3 | 1.5 | 750X130603 |
| 200:5 & 200:5 | 0.3 | 0.3 | 1.5 | 750X130604 |
| 300:5 & 300:5 | 0.3 | 0.3 | 1.5 | 750X130605 |
| 400:5 & 400:5 | 0.3 | 0.3 | 1.5 | 750X130606 |
| 500:5 & 500:5 | 0.3 | 0.3 | 1.5 | 750X130607 |
| 600:5 & 600:5 | 0.3 | 0.3 | 1.5 | 750X130608 |
| 800:5 & 800:5 | 0.3 | 0.3 | 1.5 | 750X130609 |
| 1,000:5 & 1,000:5 | 0.3 | 0.3 | 1.2 | 750X130610 |
| 1,200:5 & 1,200:5 | 0.3 | 0.3 | 1.0 | 750X130611 |

JCA-0C Dimensions



Construction and Insulation

The core and coil are encapsulated in polyurethane resin within a molded case. This material has excellent electrical and mechanical properties over a wide temperature range, has very low water absorption and is resistant to oil and a variety of chemicals.

Core and Coils

The core is made from high quality grain oriented silicon steel, annealed under rigidly controlled factory conditions. The secondary winding is made of heavy enameled copper wire. The secondary windings are evenly distributed around the core for maximum accuracy and resistance to stray fields from adjacent conductors.

Terminals

Secondary terminals are tin plated brass, compression type. A shorting device is provided and interlocked to the terminal cover in such a way as to prevent connection error. The terminal cover is made of a clear plastic. Provision is made for sealing the cover.

Primary Bars

The primary terminals are tin plated copper bars.
3/8" bolts - 400:5 and below,
1/2" bolts - 500:5 and above.

Polarity

Primary and secondary polarity marks H1, H2 and X1, X2 are molded into the case.

Nameplate

The nameplate is laser engraved aluminum. The nominal current rating of the transformer is marked on the side in large numerals.

Maintenance

These transformers require no maintenance, other than occasional cleaning, if installed where air contamination is severe.

For more information, visit
gevernova.com/grid-solutions

Instrument Transformers LLC reserve the right to change specifications of described products at any time without notice and without obligation to notify any person of such changes.

© 2025 GE Vernova and/or its affiliates. All rights reserved. GE and the GE Monogram are trademarks of General Electric Company used under trademark license.



GE VERNOVA

GEA-N50704
English
250916