

MODEL JVF-0C

Indoor/Outdoor Voltage Transformer

600 V, 10 kV BIL



Application

Designed for outdoor service; suitable for operating meters, instruments, relays and control devices.

Thermal Rating (Volt-Amperes)

55°C Rise above 30°C Ambient.....300 VA
30°C Rise above 55°C Ambient.....200 VA

Weight

(Approximate)
Unfused.....11.5 lbs

Reference Drawings

Outline.....0122C47835

Frequency

50/60 Hz

Model JVF-0C Product Data

LINE TO LINE CIRCUIT VOLTAGE			TRANSFORMER RATING ⁽²⁾		ANSI ACCURACY CLASSIFICATION 60 HZ BURDEN ⁽¹⁾		CATALOG NUMBER UNFUSED
$\Delta^{(1)}$	Y	Y ⁽³⁾	PRIMARY VOLTAGE	RATIO	W	X	
120	120	208	120	1:1	0.3	0.6	760X136001
240	240	416	240	2:1	0.3	0.6	760X136002
--	--	480	277	2.31:1	0.3	0.6	760X136003
--	--	480	288	2.4:1	0.3	0.6	760X136004
--	--	480	300	2.5:1	0.3	0.6	760X136005
360	360	--	360	3:1	0.3	0.6	760X136008
480	480	--	480	4:1	0.3	0.6	760X136006
600	600	--	600	5:1	0.3	0.6	760X136007

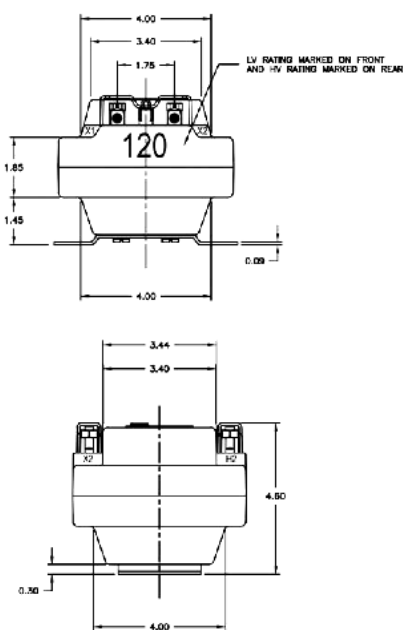
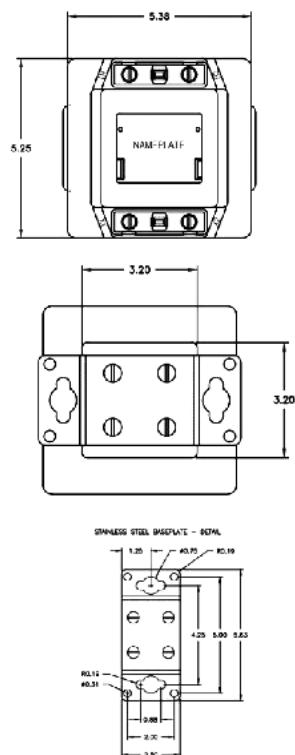
Notes:

1 Operated at rated voltage; secondary at 120 V.

2 For continuous operation, the transformer rated primary voltage should not be exceeded by more than 10%. Under emergency conditions, over-voltage must be limited to 1.25 times the transformer primary voltage rating.

3 For Y connections, it is preferred practice to connect one lead from each voltage transformer directly to the grounded neutral, using a fuse only in the line side of the primary. By this connection a transformer can never be "alive" from the line side by reason of a blown fuse on the grounded side.

JVF-0C Dimensions



Construction and Insulation

The core and coil are placed in a plastic shell made from GE Vernova Valox and encapsulated in a polyurethane.

Core and Coils

The primary and secondary coils are precision wound on an insulated spool. Once the coils are wound, a distributed gap, grain oriented silicone steel core is positioned through the center of and around the outside of this combined coil.

Primary Terminals

These compression terminals, identified as H1 and H2, are conveniently located on top of the transformer. They are fixed, tin plated, brass posts with holes to accommodate No. 6 to No. 14 wire sizes. The brass screws for securing wires to the posts are tin-plated.

Secondary Terminals

These compression terminals, identified as X1 and X2, are conveniently located on top of the transformer. They are fixed, tin plated, brass posts with holes to accommodate No. 6 to No. 14 wire sizes. The brass screws for securing wires to the posts are tin-plated.

Nameplates

The nameplate is laser engraved aluminum. It is mounted on the top of the transformer. Provision is made for attaching the user's identifying tag.

Cover

A transparent, plastic terminal cover is furnished over the primary and secondary terminals. This cover provides a safe means of observing the electrical connections without requiring its removal.

Maintenance

These transformers require no maintenance, other than occasional cleaning.

For more information, visit
gevernova.com/grid-solutions

Instrument Transformers LLC reserve the right to change specifications of described products at any time without notice and without obligation to notify any person of such changes.

© 2025 GE Vernova and/or its affiliates. All rights reserved. GE and the GE Monogram are trademarks of General Electric Company used under trademark license.

GEA-N50628
English
251015



GE VERNOVA