

MODELS 450, F & FF

Voltage Transformers



No Fuse

REGULATORY AGENCY APPROVALS
 E93779  LR89403
Manufactured to meet the requirements of ANSI/IEEE C57.13.
Classified by U.L. in accordance with IEC 44-1

Application

60 Hz.

Standard Secondary Voltage

120 Volts.

Insulation Level

600 Volt, 10 kV BIL full wave.

Accuracy Class:

0.3 W, X, M & Y, 1.2Z

Those marked ** are 0.3 W, 0.6 X, M & Y

Thermal Rating:

750 VA at 30 °C. amb., 500 VA at
55 °C. amb.

The primary and secondary terminals are No. 10-32 screws
into 3/8" deep brass inserts and fitted with one lockwasher and
flatwasher and are contained in a sealable terminal cover.

Approximate weight 25 lbs.



1 Fuse



2 Fuses



Clear Plastic Cover



GE VERNOVA

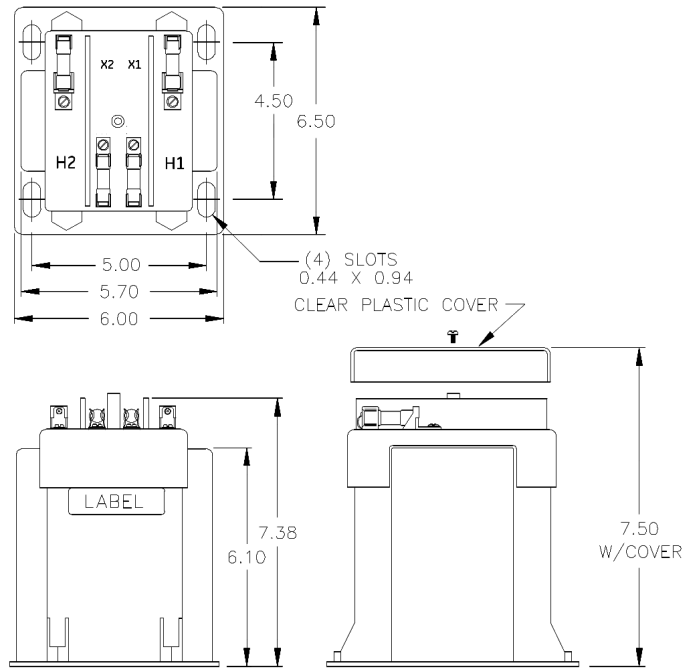
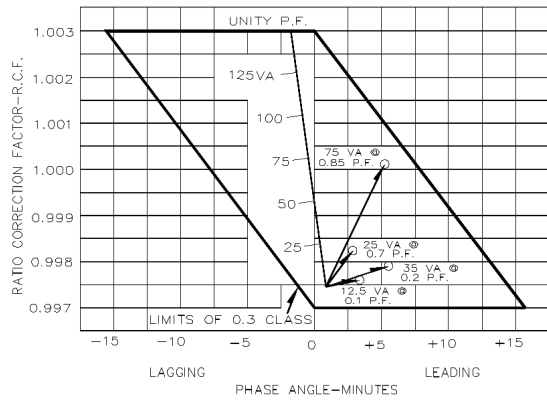
Model 450, F & FF

CATALOG NUMBER			VOLTAGE RATING	TURNS RATING	REC. PRIMARY FUSE RATING
NOT FUSED	PRIMARY FUSES ONLY	PRIMARY AND SECONDARY FUSES			
**450-069	450-069F	450-069FF	69.3:120	0.58:1	15.0
**450-120	450-120F	450-120FF	120:120	1:1	10.0
450-208	450-208F	450-208FF	208:120	1.73:1	8.0
450-240	450-240F	450-240FF	240:120	2:1	8.0
450-277	450-277F	450-277FF	277:120	2.31:1	8.0
450-288	450-288F	450-288FF	288:120	2.4:1	6.0
450-300	450-300F	450-300FF	300:120	2.5:1	6.0
450-346	450-346F	450-346FF	346:120	2.88:1	5.0
*450-480	*450-480F	*450-480FF	*480:120	4:1	4.0
*450-600	*450-600F	*450-600FF	*600:120	5:1	3.0

Models 450F & 450FF

- The core and coil assembly is encased in a thermoplastic shell and filled with resin.
- These transformers are designed for operation line-to-line. They may also be operated line-to-ground or line-to-neutral at reduced voltage, (58 % of rated volts).
- It is desirable to use a 8.0 amp BBS type or equal fuse in the secondary to protect the transformer.
- With two exceptions these transformer are ANSI C57.13 group 1. Those marked * are group 2.
- Models designed specifically for 50Hz operation are available with reduced performance. Consult factory for details.
- Fuse blocks containing type KTK-R (class CC) fuses can be fitted.
- When primary fuses are requested, the rating will be as given in the table.
- This page contains a circle diagram for the estimation of the errors for other than rated burdens. See page 27 in this section for a description of its use.
- When only one fuse is used, it must be connected into the line side (H1) terminal wiring. This will prevent the presence of voltage at the H1 terminal.

VOLTAGE TRANSFORMER CIRCLE DIAGRAM
THIS GRAPH IS DRAWN FOR A 60Hz 0.6 P.F. SYSTEM LOAD



For more information, visit
governova.com/grid-solutions

Instrument Transformers LLC reserve the right to change specifications of described products at any time without notice and without obligation to notify any person of such changes.

© 2025 GE Vernova and/or its affiliates. All rights reserved. GE and the GE Monogram are trademarks of General Electric Company used under trademark license.



GE VERNOVA

GEA-N50345
English
251008