

# EnerVista™ LAUNCHPAD



## Device Setup, Document & Site Management Toolset

The EnerVista™ Launchpad software is a powerful toolset used for the complete support and management of Multilin products. Support applications including product software, manuals, and setting files management used to ensure your important files are kept up-to-date and easily accessible. Site Management allows you to properly maintain your asset and devices by providing real-time diagnostic data and reports.

### Key Benefits

- Provides a simple and intuitive method for configuring all Multilin devices
- Ensures setup software, manuals and other support documentation is available to you and is always up to date
- Supplies all the tools necessary for analyzing faults to get your equipment back up and running
- Provides Asset and Device management capability at the click of a button

### Key Features

- Configure and access all your Multilin devices from a single application
- Create and edit setting files offline or in real-time directly to your relays and meters
- Manage all of your support documents in a single reference library
- Provides an intuitive device health logic tool, which helps you to maximize your device capability
- Receive automatic firmware, software, and hardware upgrade notices. Keep informed with the latest innovation and technology on your device when you register your Multilin products
- Contains real-time metering, fault diagnostic and maintenance data for each connected device





## Site Management

- Organize your protection devices with one interface
- Automated power system monitoring directly from Launchpad
- A management toolset for all Multilin devices settings
- Receive comprehensive Site and Device reports from Launchpad

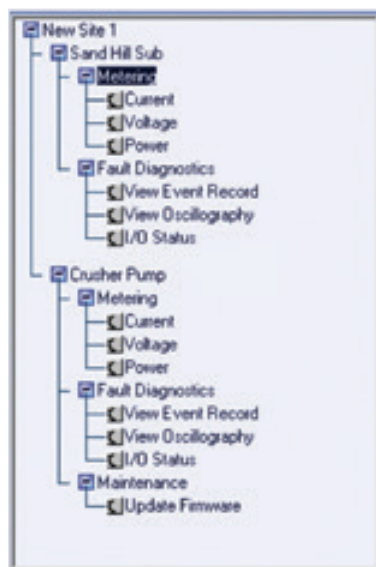
## Software & Document Management

- Instantly identify, download, and install new versions of setup software when available with a single click
- Directly install new setup software and support documents without having to navigate to the website

## Device Management & Health Logic

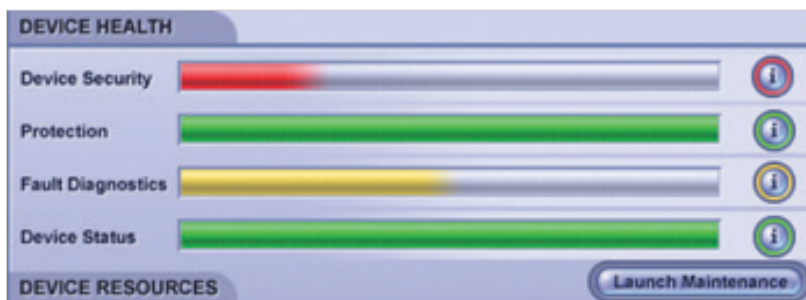
The device metering window provides system critical and diagnostics data such as Current, Voltages, and Event Records at your finger tips.

The device health logic monitors defined setpoints and actual values, then returns results in a graphical, user friendly display. This tool will help you maintain the minimum required setting and assist you to maximize your relay capabilities. The 4 categories that are monitored are:



Device Metering Window

1. Device Security – This tool will prevent unauthorized access to your relay setpoint file.
2. Protection – This tool ensures your relay is configured with the minimum required protection settings.
3. Fault Diagnostics – This feature monitors the main diagnostics tool in your relay and indicates when they are configured.
4. Device Status – Ensures your protection relay is online and ready to protect your valuable assets.



Device Health Logic

## Easily Configure and Manage your Multilin Setting Files

The setting file management tool comes standard with EnerVista Launchpad and provides a single platform to configure your Multilin protection device setting files. Additionally, you will have the ability to link related documents, such as specifications and equipment data sheets, to their respective protection device useful for day-to-day operation.

- Retrieve your device setting files and organize them according to the asset being protected
- Manage documents such as data sheets, and engineer white papers related to your protection device assets
- Access and save setpoint files for your devices regardless if the device is offline or online

## Site Reports

EnerVista Launchpad software can be used to generate comprehensive site reports for your install base and provide recommendations useful to determine upgrade and maintenance schedules for your assets and protection devices. With the click of a button, you can download critical data, which includes:

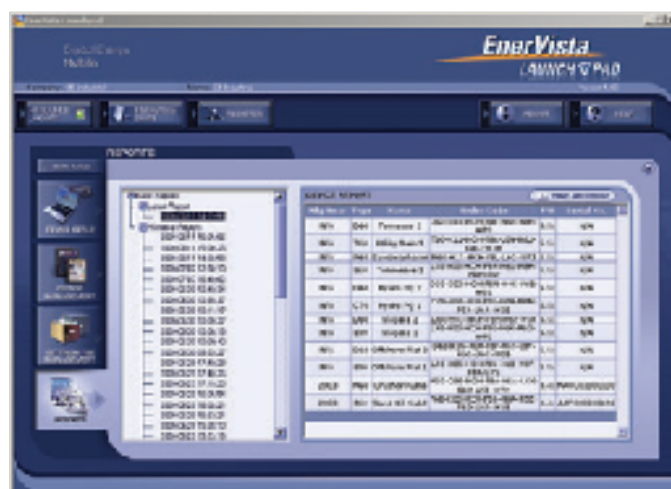
- Hardware upgrades and replacement recommendations
- Firmware upgrade recommendations, if applicable
- Complete Installed based configured by age and device type

## Device Setup

### Organize Your Installed Base Devices with a Single User-Friendly Interface.

Save precious time when establishing communications to your protection devices. Whether you have a small or large installed base, individual or networked connection, Device Setup will help you organize and manage your valuable assets:

- Manage your asset by organizing your site and protection device configurations
- Allows seamless communication with multiple devices
- Provides resources related to your protection scheme and individual protection device



## A Complete Up-To-Date Reference Library

EnerVista™ Launchpad will make sure that all necessary documents, setup programs and software tools are up-to-date by automatically retrieving them from our web site or Product CD, or by sending you an email whenever new information is available.

### Manage All of Your Support Documents in a Single Desktop Library

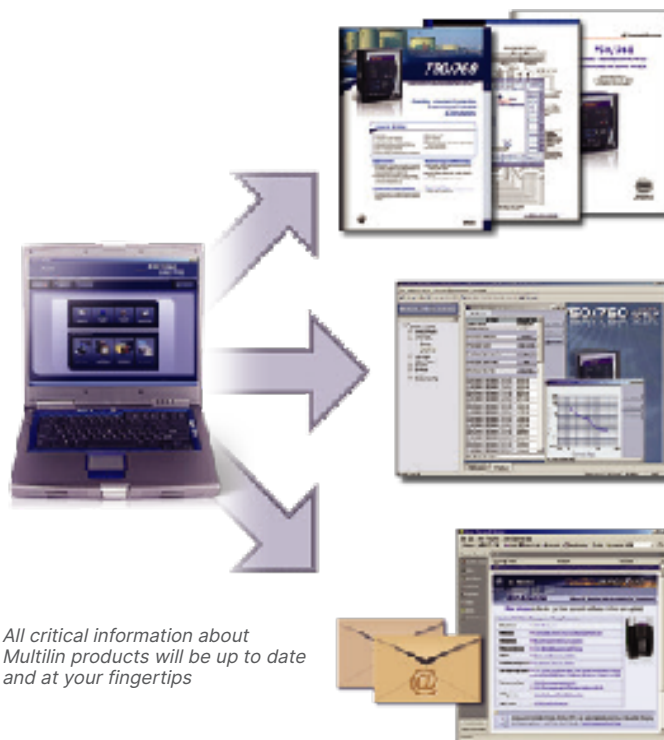
Launchpad offers a complete library of document resources that is automatically updated and organized for you.

The Document Library includes:

- Manuals
- Application Notes
- Service Bulletins
- Guideform Specifications
- Drawings
- Support Documents
- FAQ's
- Brochures

Launchpad's subscription application will keep you up-to-date on the new product resources as soon as they are available. Launchpad will allow you to sign up to receive notification about new information by one of the following methods:

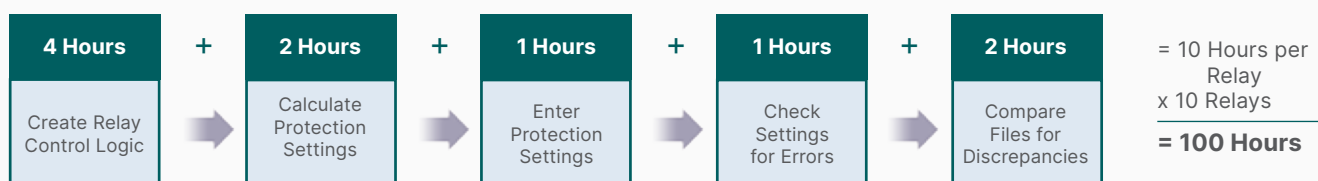
- Alerting you whenever you open up EnerVista™ Launchpad
- Emailing you about the new resource available
- Automatically downloading new documents into Launchpad



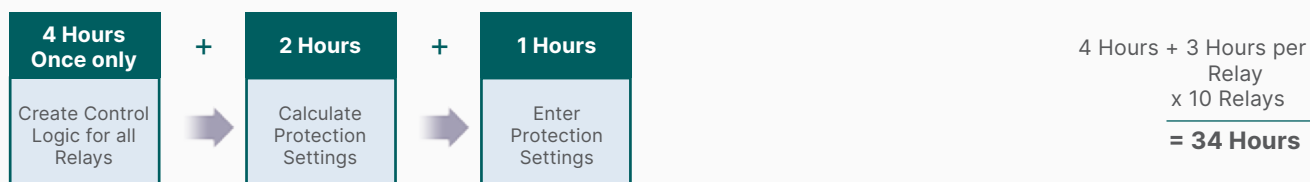
## Create Templates to Reduce Configuration Time

The template creation tool included with EnerVista™ Launchpad will greatly reduce the amount of time required to configure relays that are performing similar functions. The example below demonstrates how the time required to configure 10 similar relays can be reduced by up to one third using Launchpad templates.

### Traditional Device Configuration Method



### Launchpad Template Configuration Method





**GE VERNOVA**

For more information, visit  
**[gevernova.com/grid-solutions](https://gevernova.com/grid-solutions)**

© 2025 GE Vernova and/or its affiliates. All rights reserved. GE and the GE Monogram are trademarks of General Electric Company used under trademark license.

GEA-12900(E)  
English  
250909