

# MODEL JAB-OC 600V

## Indoor/Outdoor Current Transformer

10 kV BIL, 200-3,000 A  
Window Size 4.50" X 3.50"



### Application

Designed for both indoor and outdoor service; especially designed for installation over the secondary bushings of pad mounted transformers. For mounting and application information, including use at higher voltages, and matching the current rating to the pad transformer thermal capability, please refer to the Applications Information section of catalog GEP-9186.

### Weight

Approximately .....8.25 lbs

### Insulation Level

0.6 kV; BIL 10 kV full wave

### Reference Drawings

Outline 0121C33851  
Outline (Rectangular) 0121C34472  
Outline (2.88" cast) 0121C34503  
Outline (2.00" cast) 0121C34986  
Outline (2.50" cast) 0121C40892

### Frequency

50-60 Hz



## JAB-OC Data Table

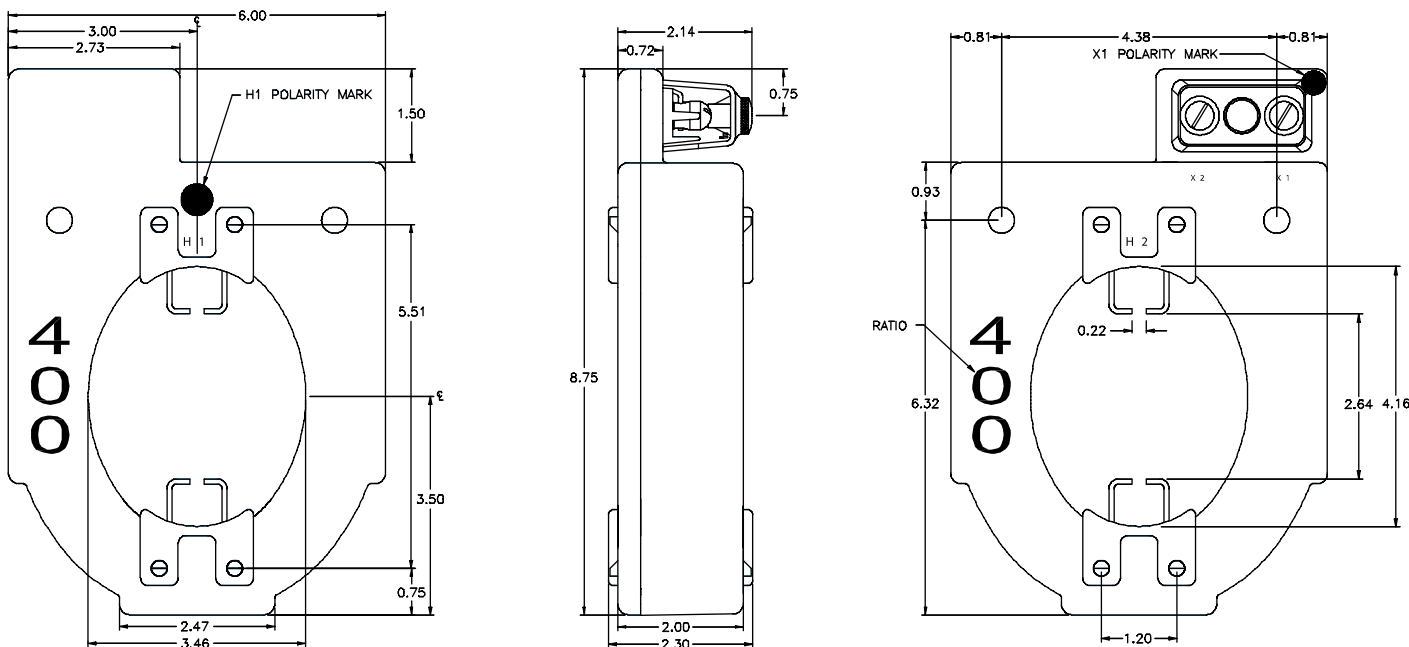
CURRENT RATIO (Amps) PRI: Sec	ANSI ACCURACY CLASS, 60 Hz BURDEN PER ANSI					CONTINUOUS THERMAL CURRENT RATING FACTORY		CATALOG NUMBER (WITH SECONDARY HARDWARE AND COVER)	CATALOG NUMBER FOR RECTANGULAR CAST JAB-OC
	B0.1	B0.2	B0.5	B0.9	B1.8	@ 30°C Amb.	@ 55°C Amb.		
*100:5	0.3	-	-	-	-	4.0	4.0	-	-
200:5	0.3	-	-	-	-	4.0	2.9	750X136202	750X136302
*200:5	0.3	0.3	-	-	-	4.0	4.0	750X136668	-
*300:5	0.3	0.3	0.3	-	-	3.0	2.2	750X136660	-
300:5	0.3	0.3	-	-	-	4.0	2.9	750X136203	750X136303
400:5	0.3	0.3	-	-	-	4.0	2.9	750X136204	750X136304
*400:5	0.3	0.3	0.3	-	-	4.0	2.9	750X136667	-
500:5	0.3	0.3	0.3	-	-	3.0	2.2	750X136205	750X136305
600:5	0.3	0.3	0.3	-	-	3.0	2.2	750X136206	750X136306
800:5	0.3	0.3	0.3	-	-	3.0	2.2	750X136208	750X136308
1,000:5	0.3	0.3	0.3	-	-	2.0	1.5	750X136210	750X136310
1,200:5	0.3	0.3	0.3	-	-	2.0	1.5	750X136212	750X136312
1,500:5	0.3	0.3	0.3	0.3	-	2.0	1.5	750X136215	750X136315
*1,500:5	0.3	0.3	0.3	0.3	-	3.0	2.4	750X136465	-
2,000:5	0.3	0.3	0.3	0.3	0.3	1.5	1.1	750X136220	750X136320
3,000:5	0.3	0.3	0.3	0.3	0.3	1.33	1.0	750X136230	750X136330
4,000:5	0.3	0.3	0.3	0.3	0.3	1.0	0.7	750X136655	750X136423

### Notes:

Ψ A high temperature version is available for use in locations with unusually high ambient temperatures. Consult factory for base plate provisions.

\* Grecian Urn Style available in cast version only. Consult factory for dimensions.

## Model JAB-0C



### Construction and Insulation

The core and coil assembly is encapsulated in resin within a molded case. The case is molded with GE Vernova Valox thermoplastic polyester resin. This tough material has excellent electrical and mechanical properties over a wide temperature range, has low water absorption and is resistant to oil and a variety of chemicals. The polyurethane resin filling completely encapsulates the winding, leads and terminals to form a waterproof unit. Cast units are molded in polyurethane resin and have slightly larger dimensions.

### Core and Coils

The core is made from high quality grain oriented silicon steel, annealed under rigidly controlled factory conditions. The secondary winding is made of heavy enameled copper wire. The secondary windings are evenly distributed around the core for maximum accuracy and resistance to stray fields from adjacent conductors.

### Terminals

Secondary terminals are tin plated brass, compression type with a 0.275" diameter cross-hole for wiring and a 1/4-28 clamp screw. A shorting device is provided and interlocked to the terminal cover. The terminal cover is made of a clear plastic. Provision is made for sealing the cover.

### Polarity

Primary and secondary marks H1, H2 and X1, X2 are molded into the case. In addition, H1 and X1 are identified by white dots. Cast units designate H1 with a white polarity mark only.

**Primary Conductor:** These transformers are primarily intended for installation over the bushing and terminal blade of pad mount transformers, which then forms the primary conductor.

### Nameplates

The nameplate is laser engraved aluminum. It is attached to the top of the unit and has provision for attaching the user's identifying tag. The nominal current rating is on both faces of the unit in large numerals.

### Mounting

The transformer can be mounted in any position but is usually installed on the pad mount transformer terminal blade using the Valox "grabbers". The grabbers are removable and the transformer also has two mounting holes allowing it to be attached to a mounting bracket.

### Maintenance

These transformers require no maintenance, other than occasional cleaning, if installed where air contamination is severe.

For more information, visit  
[gevernova.com/grid-solutions](http://gevernova.com/grid-solutions)

Instrument Transformers LLC reserve the right to change specifications of described products at any time without notice and without obligation to notify any person of such changes.

© 2025 GE Vernova and/or its affiliates. All rights reserved. GE and the GE Monogram are trademarks of General Electric Company used under trademark license.



GE VERNOVA

GEA-N50297  
English  
251009