

MODEL JCK-5CER

Outdoor Current Transformer

110 kV BIL,
2 to 1,500 A Range



Application

Designed for outdoor service; suitable for metering applications.

Weight & Dimensions

Height: 14.55"

Depth: 12.37"

Width: 10.88"

Weight (Approximate).....40 lbs

Insulation Level

15.5 kV; BIL: 110 kV per C57.13

Frequency

60 Hz

General Information

JCK-5C are manufactured in ITI's Clearwater, FL. plant utilizing state of the art Automated Pressure Gelation (APG) process and Hydrophobic Cycloaliphatic Epoxy (HCEP) for the entire line of outdoor current transformers. Insulation levels meet or exceed those specified in IEEE C57.13 and CSA CAN3-C13. Dimensions meet IEEE C12.11. Superior designs, HCEP epoxy, and the APG process are combined to produce the highest quality and reliability available in the industry for outdoor applications.

Extended Range

GE Vernova's Extended Range CT guarantees high accuracy performance over a wider range than the IEEE 0.15S accuracy class, further reducing the need for multiple ratios. For many metering applications, an increase in metered revenue can be expected when using an higher accuracy CT versus a standard CT. Extended Range units are particularly ideal for applications with a highly variable current load, such as renewable energy metering.

IEEE 0.15S Metering Class: $\pm 0.15\%$ Accuracy from $5\% I_{nom}$ to Rating Factor

GE Vernova Extended Range: $\pm 0.15\%$ Accuracy from $1\% I_{nom}$ to Rating Factor

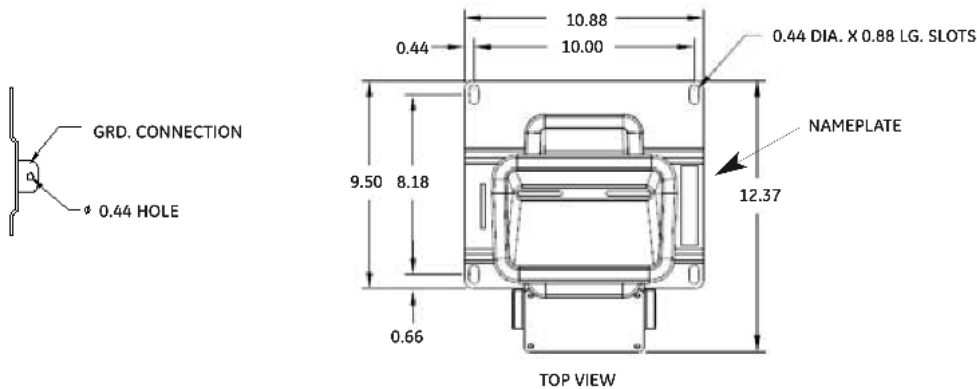
Unit Selection Model JCK-5CER

CATALOG NUMBER	CURRENT RATIO	PERFORMANCE RANGE	METERING CLASS*	RATING FACTOR @ 30°C amb
Single Ratio Type JCK-5C 15 kV, 110 kV BIL				
755C153001	200:5	2 A to 300 A	0.15 B-1.8	1.5
755C153002	1,000:5	10 A to 1,500 A	0.15 B-1.8	1.5



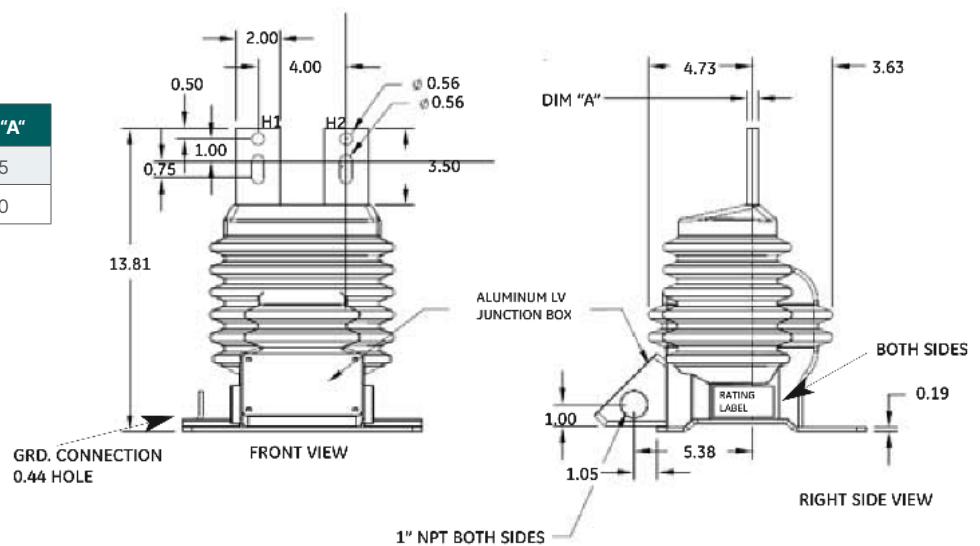
GE VERNOVA

Model JCK-5CER



Model JCK-5CER

PART NUMBER	RATIO	DIM. "A"
755C153001	200:5	0.25
755C153002	1,000:5	0.50



General Construction

Insulation - Hydrophobic Cycloaliphatic Epoxy (HCEP)
 Baseplate - Heavy gage marine grade aluminum
 Conduit box - Cast aluminum, removable, 1" threaded hubs
 Nameplate - Anodized aluminum
 Mounting - Horizontal, Vertical, Inverted

HCEP Resin Features

Ideal for outdoor applications
 Excellent water repellent characteristics
 High mechanical properties
 Excellent dielectric properties - stable in outdoor humid conditions
 Enhanced thermal cycle resistance
 High resistance to erosion from ultra violet (UV) radiation
 High tracking and arc resistance
 Extended service life

Notes:

- 110 kV BIL, 60 Hz
- Accuracy - 0.15 B1.8 from 1% of rated current to its $RF=1.5$
- Encapsulated in HCEP (hydrophobic cycloaliphatic epoxy)
- HV terminals - tin plated
- LV terminals - tin plated compression type with a 0.27 in. diameter through hole and a slotted hex head machine screw suitable for use with a 3/8 in. socket - maximum torque 50 in. lbs.
- Separate compression type ground terminal located within the LV terminal junction box.
- Baseplate - 0.19 in. thick marine grade aluminum.
- Weight - approx. 40 lbs.

For more information, visit
gevernova.com/grid-solutions



Instrument Transformers LLC reserve the right to change specifications of described products at any time without notice and without obligation to notify any person of such changes.

© 2025 GE Vernova and/or its affiliates. All rights reserved. GE and the GE Monogram are trademarks of General Electric Company used under trademark license.

GEA-N50265
 English
 251010