

MODELS PTG5-1-110 & PTG5-2-110

Indoor Voltage Transformers

Medium Voltage



REGULATORY AGENCY APPROVALS



E145172



LR89403

Manufactured to meet the requirements of ANSI/IEEE C57.13.

Accuracy Class

0.3 WXYZ 1.2 ZZ at 100% rated voltage with 120 V based ANSI burden.

0.3 WXY, 1.2Z at 58% rated voltage with 69.3 V based ANSI burden.

Frequency

60 Hz.

Maximum System Voltage

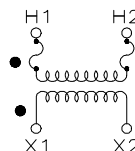
15.5 kV, BIL 110 kV.

Thermal Rating

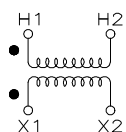
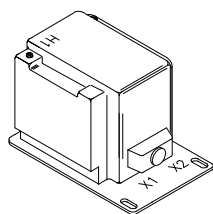
1,500 VA 30°C. amb.

1,000 VA 55°C. amb.

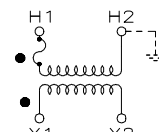
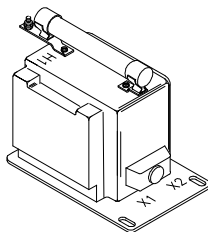
Approximate weight 85 lbs. unfused.



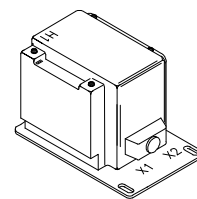
TWO FUSE
Two Bushing



UNFUSED
Two Bushing



ONE FUSE
One Bushing



SWITCHGEAR
STYLE
Two Bushing

PTG5

TWO BUSHING (A)				CATALOG NUMBERS			
GROUP	PRIMARY VOLTAGE	RATIO	SECONDARY VOLTAGE	UNFUSED	FUSES	FUSE CLIPS ONLY	SWITCHGEAR STYLE
1	*7,200	60:1	120	PTG5-2-110-722	PTG5-2-110-722FF	PTG5-2-110-722CC	PTG5-2-110-722SS
1	*8,400	70:1	120	PTG5-2-110-842	PTG5-2-110-842FF	PTG5-2-110-842CC	PTG5-2-110-842SS
2	11,000	100:1	110-50 Hz	PTG5-2-110-113	PTG5-2-110-113FF	PTG5-2-110-113CC	PTG5-2-110-113SS
2	*12,000	100:1	120	PTG5-2-110-123	PTG5-2-110-123FF	PTG5-2-110-123CC	PTG5-2-110-123SS
2	13,200	110:1	120	PTG5-2-110-1322	PTG5-2-110-1322FF	PTG5-2-110-1322CC	PTG5-2-110-1322SS
2	*14,400	120:1	120	PTG5-2-110-1442	PTG5-2-110-1442FF	PTG5-2-110-1442CC	PTG5-2-110-1442SS



GE VERNOVA

PTG5 (cont'd)

ONE BUSHING (B)				CATALOG NUMBERS			
GROUP	PRIMARY VOLTAGE	RATIO	SECONDARY VOLTAGE	R FR (C)	FUSES	FUSE CLIPS ONLY (d)	SWITCHGEAR STYLE
4A	*7,200	60:1	120	65	PTG5-1-110-722F	PTG5-1-110-722C	PTG5-1-110-722S
4A	*8,400	70:1	120	65	PTG5-1-110-842F	PTG5-1-110-842C	PTG5-1-110-842S
4B	11,000	100:1	110-50 Hz	65	PTG5-1-110-113F	PTG5-1-110-113C	PTG5-1-110-113S
4B	*12,000	100:1	120	65	PTG5-1-110-123F	PTG5-1-110-123C	PTG5-1-110-123S
4B	13,200	110:1	120	65	PTG5-1-110-1322F	PTG5-1-110-1322C	PTG5-1-110-1322S
4B	*14,400	120:1	120	65	PTG5-1-110-1442F	PTG5-1-110-1442C	PTG5-1-110-1442S

NOTE: All Primary voltages marked with an asterisk (*) are approved for revenue metering in Canada by Industry Canada, Approval No. AE-0431 Rev. 01

Models PT Models PTG5-1-110 & PT G5-1-110 & PTG5-2-110

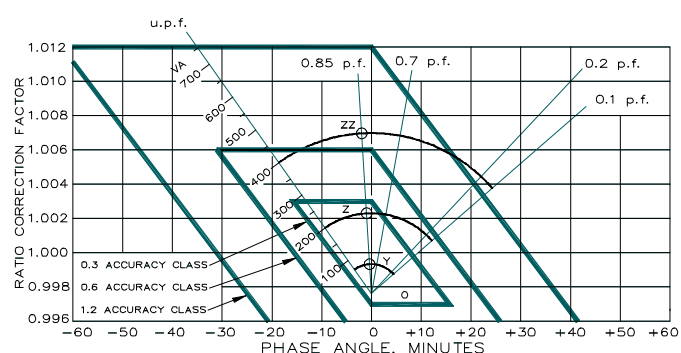
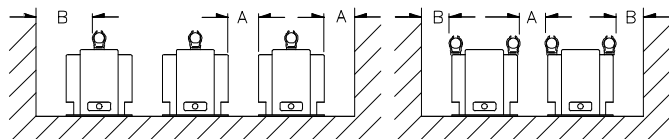
Recommended Minimum Spacings

A = Unit to Unit or to ground = 1.25" minimum.

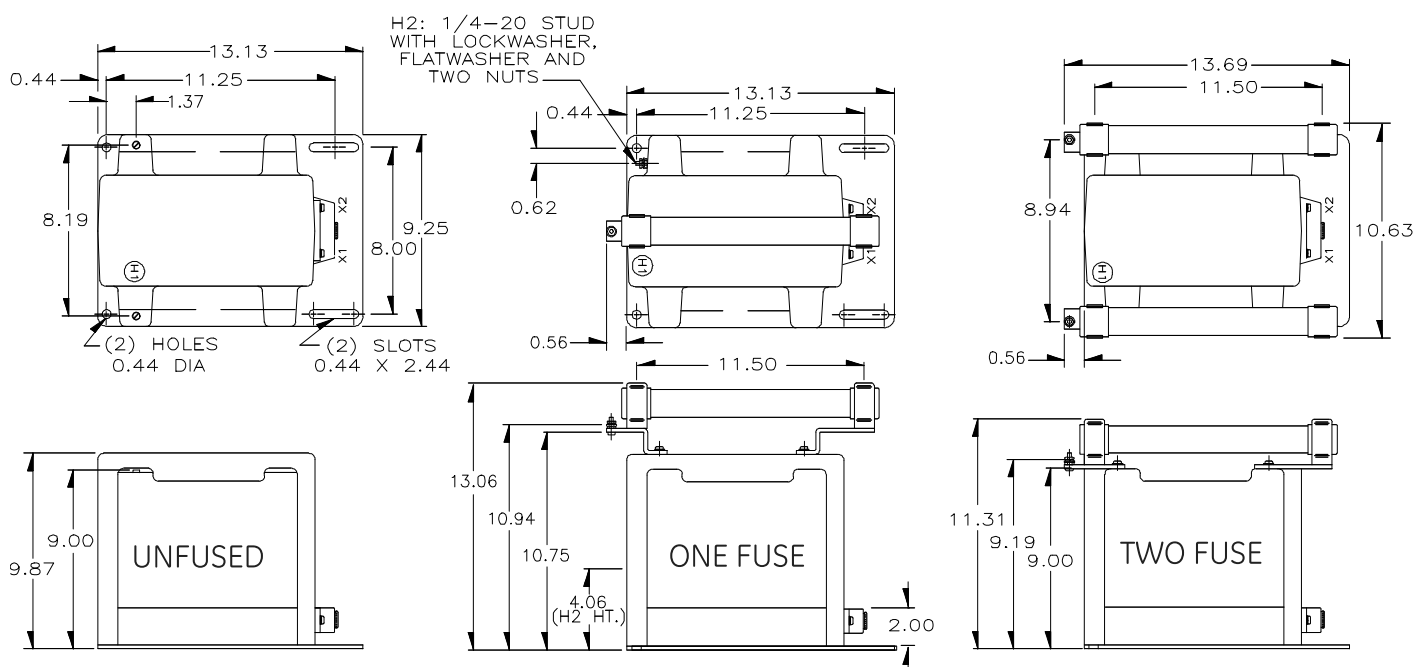
B = HV to Ground in air = 6.50" minimum.

Recommended spacing are for guidance only.

User needs to set appropriate values to assure performance for high potential test, impulse test, high humidity, partial discharge, high altitude, and other considerations like configuration.



The circle diagram can be used to predict the performance of a transformer for various loads and power factors. A convenient scale of volt-ampere is shown on the unity power factor line (u.p.f.) and commences at the zero or no-load locus. To use the diagram, measure the known V.A. and scribe an arc about the "Zero" locus of a length that contains the angle of the burden power factor. The point at which the arc terminates is the error locus in phase angle minutes and ratio correction factor.



PTG5

FUSE FOR MODEL PTG5 TRANSFORMER	RATINGS (kV)	INTERRUPTING AMPERES (Sym)	SUGGESTED RATING CONTINUOUS AMPERES	CAP Dia. (a) INCHES	LENGTH INCHES	CLIP CENTERS INCHES
7200:120 V	15.5	80,000	1.0E	1.63	13	11.50
8400:120 V	15.5	80,000	1.0E	1.63	13	11.50
11000:110 V	15.5	80,000	0.5E	1.63	13	11.50
12000:120 V	15.5	80,000	0.5E	1.63	13	11.50
13200:120 V	15.5	80,000	0.5E	1.63	13	11.50
14400:120 V	15.5	80,000	0.5E	1.63	13	11.50

(a) Two fuse transformers should not be used for Y connections. It is preferred practice to connect one lead from each voltage transformer directly to the neutral terminal, using a fuse in the line side of the primary only. By using this connection a transformer can never be made "live" from the line side by reason of a blown fuse in the neutral side. For continuous operation the transformer primary voltage should not exceed 110% of rated value.

(b) Voltage transformers connected line-to-ground cannot be considered to be grounding transformers and must not be operated with the secondaries in closed delta because excessive currents may flow in the delta.

(c) See page 32, item 1 for ferroresonance considerations. Values in table are in ohms.

Note: It is recommended that system line-to-line voltage not exceed the transformer maximum system voltage level.

- Primary terminals that are unfused are 1/4-20 brass screws with one flatwasher and lockwasher.
- Primary terminals that are fused are 1/4-20 brass screws with one flatwasher and lockwasher and two nuts.
- Secondary terminals are No. 10-32 brass screws with one flatwasher and lockwasher.
- The core and coil assembly is vacuum encapsulated in polyurethane resin.
- Thermal burden rating is for 120 volt secondaries.
- Switch gear style is similar to fused style. No fuse or fuse clip is provide, but inserts for fuse clips are supplied.
- A test card is provided with each unit.

For more information, visit
[gevernova.com/grid-solutions](https://www.gevernova.com/grid-solutions)

Instrument Transformers LLC reserve the right to change specifications of described products at any time without notice and without obligation to notify any person of such changes.

© 2025 GE Vernova and/or its affiliates. All rights reserved. GE and the GE Monogram are trademarks of General Electric Company used under trademark license.



GE VERNOVA

GEA-N50250
English
251010