

PERCEPTION FLEET

Transformer Fleet Risk Management Software System

Easy to install and configure, Perception™ Fleet delivers instantaneous results upon installation. Continuing its legacy in providing innovative solutions, Perception Fleet is GE Vernova's Online Transformer Fleet Management Software System that provides a revolutionary and holistic approach for transformer fleet assessments for utilities and industrial customers around the globe.

GE Vernova's Perception Fleet is a smart, simplified and standards-based software system that moves customers from a manual, one-on-one transformer assessment process to an automated and online fleet management assessment. By evaluating the condition of assets and establishing their risk of failure, Perception Fleet is able to prioritize and rank assets within a fleet.

The Perception Fleet software with web browser interface provides customers comprehensive transformer fleet condition rankings, transformer risk information, and expert analysis on-demand, removing time-consuming and costly manual processes as well as unnecessary maintenance, helping focus capital and reduce operational expenses.

Key Benefits

Transformer Fleet Replacement Strategy



- Provides a clear strategic view for asset replacement across the entire fleet
- Tracks the fleet risk index over time to show the fluctuations in the fleet's condition as well as the trend of individual transformers
- Allows for flexible and scalable transformer fleet risk management

Condition-Based Maintenance Program



- Provides the insight required to shift from costly time-based maintenance to cost effective and focused condition-based maintenance
- Reduces ambiguity and the need to speculate regarding budget requirements
- Reduces OPEX usage on assets to only as required

Automated Data Analysis



- Reduces time required to gather, amalgamate, analyze and interpret transformer diagnostic data
- Provides intelligent algorithms to determine each transformer's condition, and ranks the transformers in the fleet based on their risks
- Reduces the burden on transformer expertise that is rapidly being lost



Smart Management System

- Automated, continuously calculated and always available, fleet transformer condition risk rankings and reporting
- Automatic, scheduled, real-time condition assessments and alarms (DGA, moisture, bushing monitoring and partial discharge data)
- Integrated Workflow Designer application for customizing algorithms to support unique transformer insight

Simple Diagnostics

- Web browser interface to critical fleet and transformer data
- Built in dashboards with prioritized reporting on critical fleet and transformers "at-a-glance" enabling action plans for rapid response
- Simple setup, simple data acquisition and instant results
- Broad range and comprehensive suite of DGA diagnostics tools
- Fully interoperable data exchange facility with no predefined formats required
- Risk and rank evaluation of transformer and OLTC's using data received from GE Vernova online transformer monitors and lab oil property analysis data

Standards-Based

- Risk calculations built on globally recognized IEC, IEEE, ASTM, ISO & DIN standards as well as CIGRÉ and EPRI best practices
- Increased accuracy with 24/7/365 gas rate-of-change analysis utilizing Piecewise Linear Rate of Change versus single period of time analysis



GE VERNOVA

A Smart Transformer Fleet Management System

Perception Fleet is a smart software solution designed to provide a comprehensive condition evaluation of a transformer fleet. Perception Fleet can analyze and interpret data in order to determine the risk of a transformer without the need for expert data analysis. Full technical analysis is also instantly available for transformer technical expert use.

This is accomplished by gathering, amalgamating, analyzing and interpreting the data held on transformers utilizing GE Vernova's online monitoring devices and offline data. The data is analyzed using intelligent algorithms for condition anomalies and characteristics to determine the transformers risk. Each transformer is then assigned a risk score, and they are ranked based on their criticality and risk of failure.

Automated Fleet Transformer Condition Risk Rankings and Reporting

The built-in data download schedule ensures that Perception Fleet is always up to date with the latest data collected from the online monitoring devices. The data is then passed through an automated algorithm engine which analyzes the data for specific condition triggers and interprets the transformers condition and risk of failure based on the trigger points.

Perception Fleet uses data from the GE Vernova multi gas and single gas as well as lab oil properties analysis data along with online bushing monitoring to determine the condition of a transformer.

OLTC evaluation is also performed using a specific algorithm that was designed to use data from the Kelman TAPTRANS™ device.

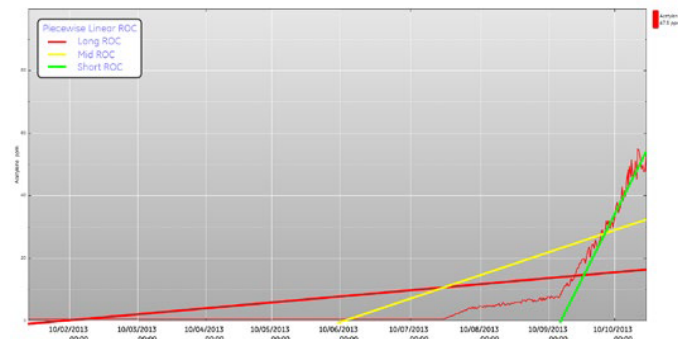
Once the condition of each transformer has been evaluated, the Perception Fleet software compares the transformers within the fleet and ranks them accordingly. Providing a ranked view of transformers that are at risk of failure gives an accurate picture of maintenance priority. This delivers valuable time savings as a majority of organizations currently perform such evaluations manually which can take weeks of data analysis.



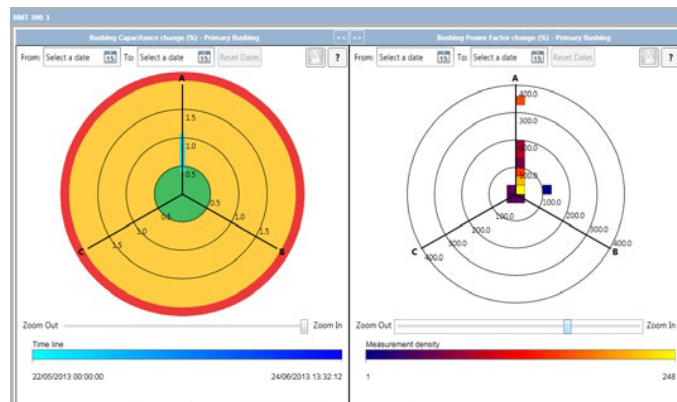
Perception Fleet's built-in algorithms incorporate the data from the monitoring devices and produce a Risk Index from 1 to 5.

Critical Online Measured Characteristics

The intelligence within the algorithms evaluates the data received from GE Vernova's online transformer monitors, focusing on four critical characteristics.



Piecewise linear rate of change of gas concentration evaluation based on IEC 60599 and Cigré TB 227 best practices.

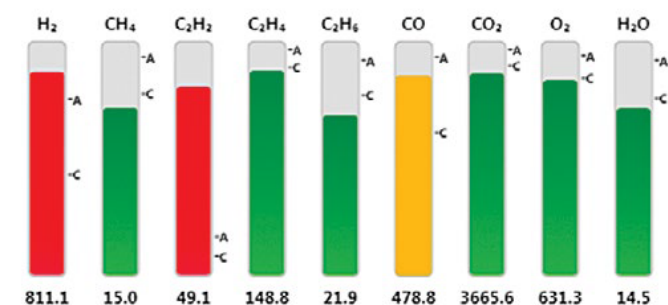


Bushing power factor, capacitance alarms as well as inter-phase angle plotting

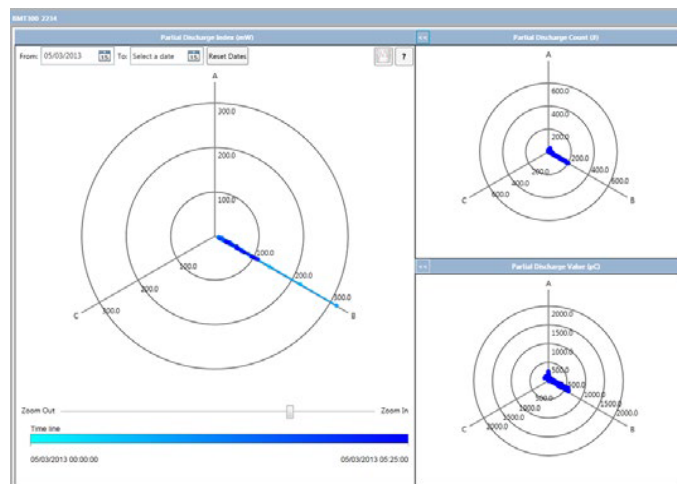
Main Gas Concentration ppm

Last Measurement
04/11/2013 01:00

116A-Dis-Transfix
Transfix 1.6
SN#: TX-123321



Absolute gas level concentrations and moisture evaluation based on IEEE C57.104, IEC 60422 and EPRI ratios as well as alarm levels and Cigré TB 227 best practices.



Partial discharge alarms and PRPD evaluation

Critical Offline Oil Property Characteristics

The transformer insulation oil properties and quality is also evaluated based on the results received from labs for manually sampled transformer oil. Perception Fleet's specific offline oil algorithm uses oil analysis techniques outlined by standards, working groups, committees and industry experts to evaluate the condition of the transformer along with GE Vernova online monitoring data analysis or where online monitoring is not available.

Due to the increased and varied level of information provided in lab results Perception Fleet is capable of evaluating a wealth of information beyond pure DGA, as outlined in the table.

The automated import facility enables not only the users but their labs to seamlessly update Perception Fleet with the latest data for a manual oil sample analysis. Perception Fleet then performs an automated analysis and evaluation of the newly imported data without the need for any operator interaction.

As well as analysing manually sampled oil data, the offline algorithm can also perform an analysis of oil information from 3rd party online monitors or software applications. The algorithm determines the data available in the imported CSV file received from the 3rd party and performs an evaluation.

A risk index is then generated for each transformer based on the results of all the analytics.

OIL PROPERTY	STANDARD
Color and appearance	ISO 2049, ASTM D1500
BDV, kV	IEC 60156, ASTM D1816
H ₂ O, ppm	IEC 60814, ASTM D1533
Acidity, mgKOH/g	IEC 62021 - (1 & 2), ASTM D974, D644
Power factor, 90C	IEC 60247, ASTM D924
Power Factor, 25C & 100C	IEC 60247, ASTM D924
Resistivity, 20C & 90C, GOhm	IEC 60247
Inhibitor, %	IEC 60666, ASTM D4768, ASTM D2668
Sediment and sludge, %	IEC 60422 - Annex C
IFT, mN/m	ASTM D971, EN 14210, ASTM D2285
Passivator	IEC 60666-2010 - Annex B ASTM D3487
Furans, ppb	ASTM D5837
Corrosive sulfur	IEC 62535, ASTM D1275 Method A & B, DIN 51353
PCBs	IEC 61619, ASTM D4059

Current Transformer Risk Ratings

Once the risk index for each transformer has been established using the intelligent algorithms, Perception Fleet then analyzes the entire fleet, compares the risk index and risk score of each transformer within the fleet, and then ranks them according to their risk index. The risk index feature provides focus on critical assets and helps build a condition based maintenance program focusing valuable expenditure. Based on the information provided in the ranking table it is possible to evaluate which transformers are in potential need of replacing and which require maintenance.

The Risk Score and Ranking Graph Dashboard

It is expected that several transformers will have the same risk index. In order to segregate the transformers even further, Perception Fleet then calculates the transformers risk score.

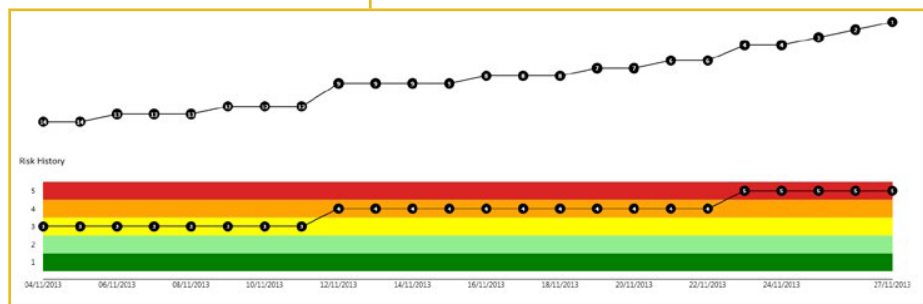
The risk score is based on an amalgamated value generated by the algorithms inside Perception Fleet. The risk score allows Perception Fleet to display which transformers within the same condition grouping are at the greatest risk of failing or developing further faults.

The ranking graph dashboard simplifies the process of tracking a transformer's risk and rank within the fleet over time to determine if the transformer health is degrading or improving and if maintenance actions were effective.



The risk index ring shows the varying risk index stages the transformer has been in over a 9 month period, with the current risk index in the center.

Asset Hierarchy	Ranking
GE_Trans_Dis_116A	
GE_Trans_Gen_13B	
GE_Trans_Dis_111B	
GE_Trans_Dis_113A	
GE_Trans_Gen_15B	
GE_Trans_Gen_14B	
GE_Trans_Gen_13A	
GE_Trans_Dis_113B	
GE_Trans_Gen_15A	
GE_Trans_Dis_114A	
GE_Trans_Dis_115B	
GE_Trans_Dis_111A	
GE_Trans_Gen_11A	
GE_Trans_Dis_112B	
GE_Trans_Gen_12B	
GE_Trans_Gen_11B	
GE_Trans_Dis_115A	
GE_Trans_Dis_114B	
GE_Trans_Gen_14A	
GE_Trans_Dis_112A	
GE_Trans_Gen_12A	
GE_Trans_Dis_116B	



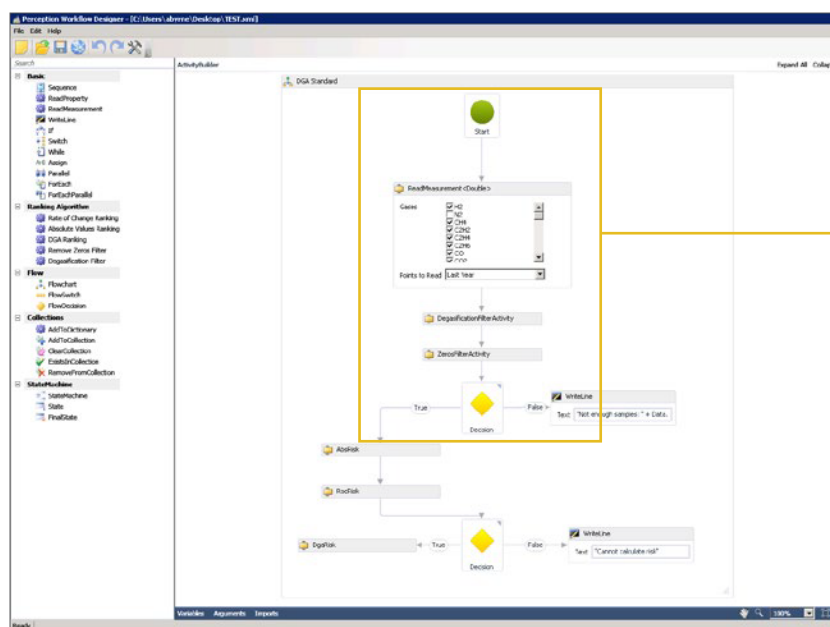
At the top the ranking history graph displays the transformers ranking position over a 30 day period. A condition statement for each point is displayed on the dashboard when a point is selected on the graph. The condition statement provides details on the risk and rank evaluation. At the bottom the risk history graph displays the transformer risk variation over a period of 30 days.

The ranking table shows all the transformers within the fleet color coded and ranked by risk index – from the transformer considered at greatest risk at the top, to the safest at the bottom. Transformers not highlighted with a color in the ranking table are not being risk evaluated.

Integrated Workflow Designer

As transformers may vary greatly from one another due to design or vintage, and/or the organizations best practices may differ from the IEEE/IEC guidelines, Perception Fleet has the built in capability of allowing users to define their own risk evaluation or simply adjust the sensitivity of the standard algorithms. The customized algorithms can be as complex or simple as required by your fleets unique characteristics.

The Workflow Designer application allows users to alter and create new intelligent algorithms to be used within Perception Fleet. Customers have the ability to add custom algorithms to support additional and/or unique transformers insight into each transformers unique characteristics. This provides a tailored evaluation on a transformer-by-transformer or transformer family basis if desired or needed. Creation, modification or assignment of workflows require special permission levels due to its critical role for fleet management.

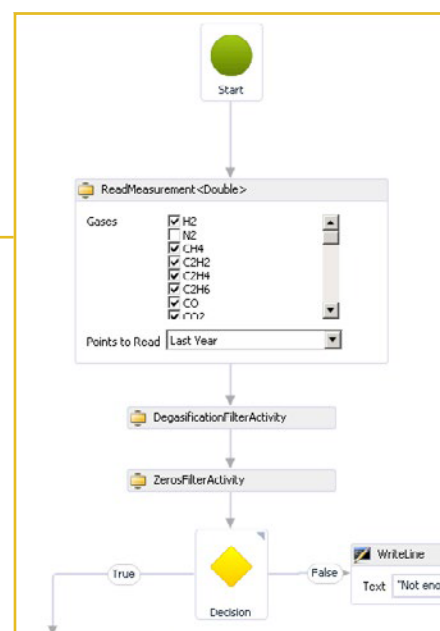


Perception Workflow Designer Application

The Perception Workflow designer is a decision based flow chart. The user selects which elements of the transformer they want to evaluate within the algorithm and then provide the decision statements and results.

The result of the decision statement can then produce a condition value based on analyzed data or can flow into additional decision statements adding another layer of validation into the algorithm, producing in-depth risk index evaluation.

GE Vernova offers the facility to write and develop your custom algorithms for you based on your unique requirements. For more information please contact your GE Vernova sales representative.



Algorithm workflow evaluation statements and decisions

Fully Interoperable Data Exchange Facility

Perception Fleet provides interoperability with other systems through its fully customizable automatic CSV import/export functionality. It allows data exchange and integration with other customer's systems such as SCADA, EMS, DMS, Historian, AM, SAS, planning, ERP, etc. Applications which support CSV file exchange can easily interface with Perception Fleet, enabling data to be exchanged between applications.

The CSV import and export facility can also be used to build the asset structure and properties in Perception allowing for quick and easy configuration of the Perception Fleet asset structure and properties.

Seamless automatic data import is achieved by utilizing Perception Fleet's filewatcher facility. The software constantly monitors a folder for the arrival of a new CSV file and automatically imports the contents into its database. Conversely Perception Fleet allows

scheduled automatic export of data to CSV files. As well as the scheduled exports, when a scheduled download from an online monitor occurs, Perception Fleet automatically exports any new data downloaded to a CSV file.

The CSV file exchange facility allows for the import of any data that can be captured in a CSV file into Perception Fleet, enabling the evaluation and analysis of additional asset data not captured by GE Vernova's online monitors, as well as offline and lab oil properties analysis data.

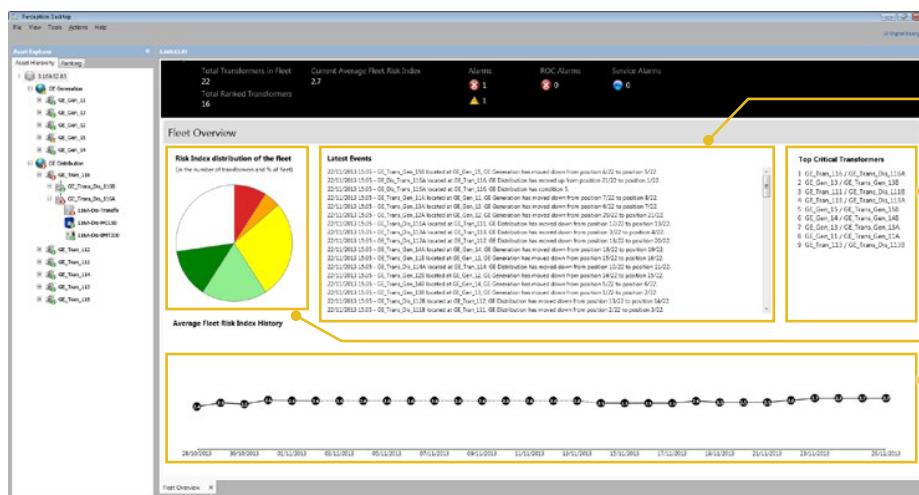
Perception Fleet utilizes the OPC UA interface and object model ensuring a secure 128 bit RSA encrypted channel between Perception Fleet and the remote clients. In addition to providing a secure communication channel, OPC UA also provides a secure interface allowing OPC UA compatible applications to interface directly with Perception Fleet.

Simple Management with Dashboards and Diagnostics

In a world of intelligent and powerful monitoring devices, customers face the problem of data overload making it hard for operators and other users to recognize changes, identify abnormal conditions and react quickly. Perception uses cognitive techniques to build its dashboards for rapid recognition of any change by utilizing a traffic light approach that empowers users with at-a-glance recognition of key indicators or important condition changes optimizing reaction time.

Fleet Dashboard

The fleet dashboard provides a comprehensive overview of the transformer fleet, highlighting which transformers are being monitored and risk assessed, how many monitoring devices are experiencing alarms, the overall fleet risk index history and the critical events occurring within the fleet.



A "Latest Events" section reports crucial events as they occur within the fleet, highlighting the specific transformers affected along with the time, event and location details.

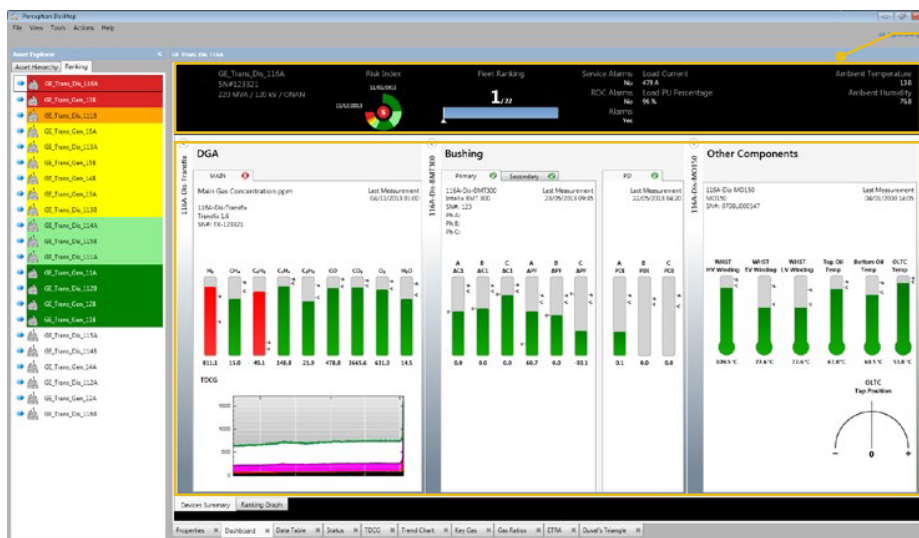
The "Top Critical Transformers" list displays the transformers at highest risk of developing a serious fault or failing, helping focus maintenance action.

The pie chart shows a visual breakdown of the transformer conditions within the fleet.

The "Average Fleet Risk Index History" shows if your fleet is getting healthier or becoming more at risk over time.

Device Summary Dashboard

The device summary dashboard automatically self-configures to show, the most important data from all available online monitoring devices in a simple and concise design.



The title bar on the dashboard provides critical risk and rank detail, alarm information, transformer load and environment information.

The center section of the dashboard provides a snapshot of the latest critical data including DGA information, bushing power factor and capacitance, partial discharge, winding hot spot details, oil temperature and OLTC temperature and tap position. The gages change color if the value breaches the limits set for caution or alarm and depicts how close the measured value is to the defined alarm limits. A miniature chart of TDCG is also available for quick graphical visualization of gas trends.

Perception Web

Perception Web is a web browser interface for Perception Fleet that provides critical fleet and transformers information via any modern web browser application running on any platform. By using a web browser to interface with Perception Fleet; Perception Web removes the need to install Perception Desktop thereby simplifying and speeding up the Perception Fleet deployment and rollout process. The information provided via Perception Web is perfect for any user who is interested in viewing the critical fleet and transformer data.

As well as running on a desktop or laptop platform, Perception Web can also be viewed on any Smart Phone or Tablet. The data displays provided by Perception Web are designed to automatically adapt to suit the screen size of the device.

Perception Web can be configured to run as an Intranet or Internet service. The Internet configuration allows users to access and browse the Perception Web data from anywhere on a device with an Internet connection securely. When configured for Intranet access users must be connected to their organizations network infrastructure directly or via a VPN.

Perception Web provides access to the following critical data:

Fleet Overview

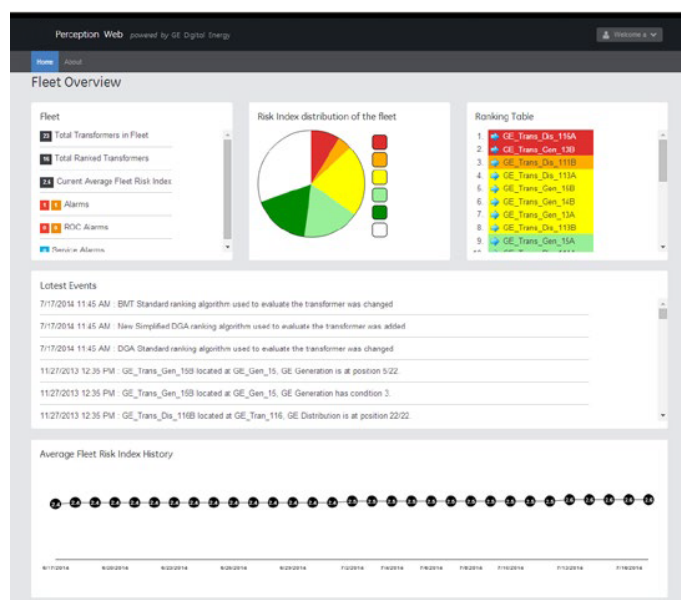
- Summary count of the number of transformers in the fleet, the assets that are ranked and the alarms that have been triggered.
- Risk index distribution of the fleet.
- Fleet ranking table.
- Latest events list containing details of crucial events that occurs for an asset within the fleet.
- Average fleet risk index history providing a timeline of the overall health risk index of the transformer fleet.

Transformer Dashboards

Critical transformer information, such as current risk index and history, fleet ranking position, alarms, load current and PU percentage, ambient environment information and critical measurement data taken by the online monitors.

Asset Wallboards

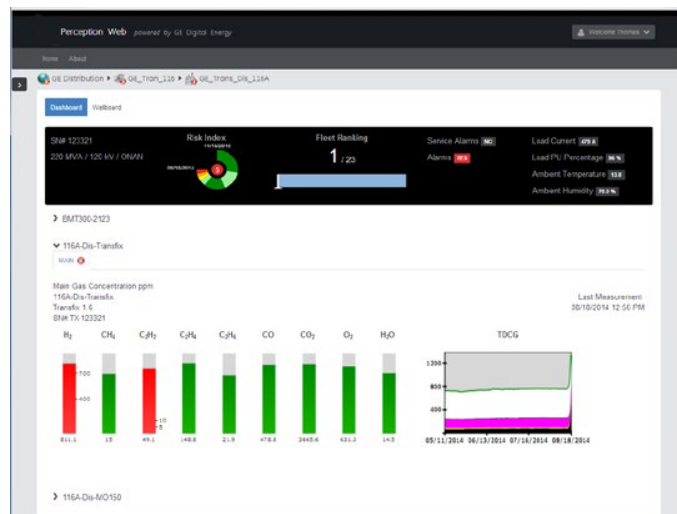
Area's, Substation's and Transformer's wallboards as preconfigured in Perception Fleet via the Perception Desktop application.



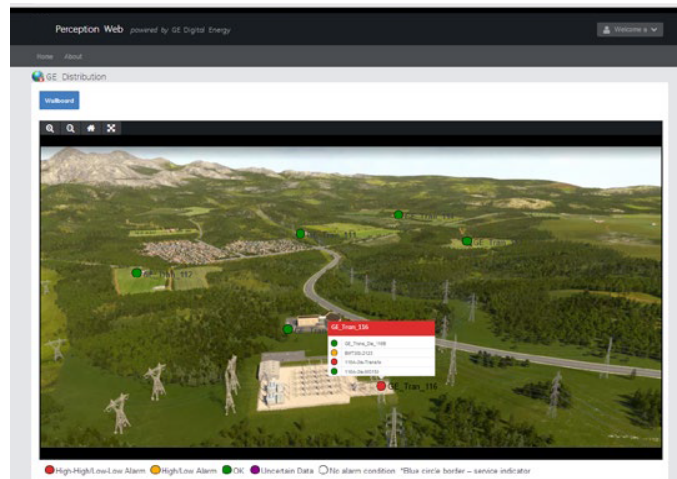
The Fleet Overview provides a comprehensive overview of the transformer fleet.

Asset Hierarchy

- Visual representation of the network of areas, substations, transformers and online monitors as preconfigured in Perception Fleet via the Perception Desktop application.
- Click through on an Area or Substation asset to show associated Wallboard.
- Click through on transformer asset to show associated Wallboard or Transformer Dashboard.



The Transformer Dashboard displays the critical data captured for the transformer.

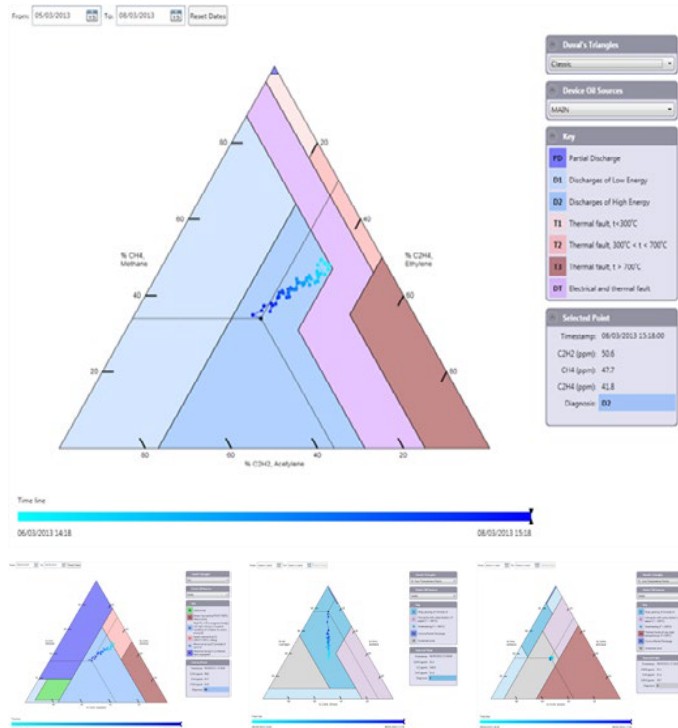


The Wallboard provides a virtual representation of your fleets alarm status.

Comprehensive DGA Diagnostics Tools

Perception Fleet provides a broad range and comprehensive suite of DGA diagnostics tools. The diagnostics intelligence built into Perception Fleet provides internationally recognized industry standard transformer fault diagnostics based on dissolved gas analysis. Transformer experts throughout the world have published papers on data interpretation and transformer fault diagnosis methods supported within Perception Fleet. Perception Fleet simplifies the process of applying those widely trusted diagnostics methods to your transformer, expediting the process and liberating precious resources in the task of fault identification, intervention and prevention.

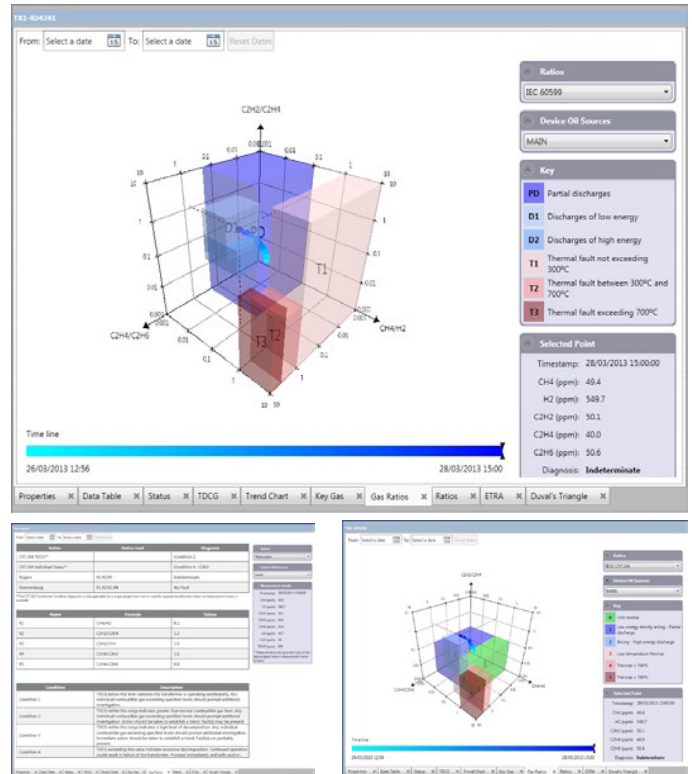
Duval's Triangle



Developed by Michel Duval, this diagnostics method compares concentrations of key gases in transformer oil and presents a probable condition fault.

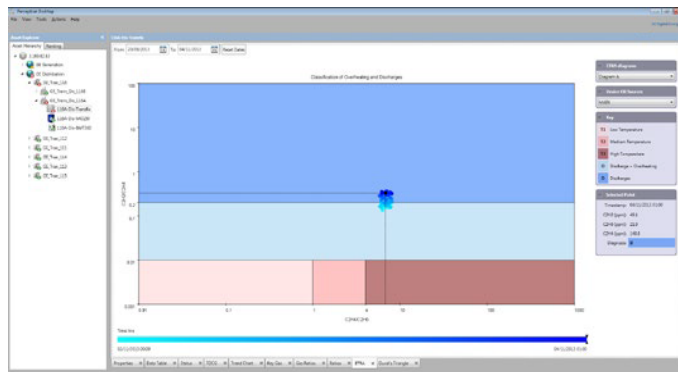
*Classic, LTC, 4 & 5 – Low Temp Faults

Gas Ratio



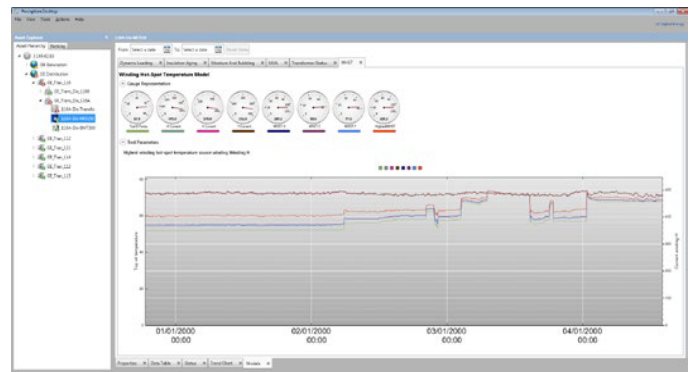
Encompasses the IEC 60599 & IEEE C57.104 standards in a 3D rotatable graph. Rogers and Doernburg ratio diagnostics are also included in a separate concise and detailed table.

Japanese ETRA



Diagrams A and B compare concentrations of C_2H_2/C_2H_4 against C_2H_4/C_2H_6 as well as C_2H_2/C_2H_6 against C_2H_4/C_2H_6 in order to determine fault conditions.

Transformer Models

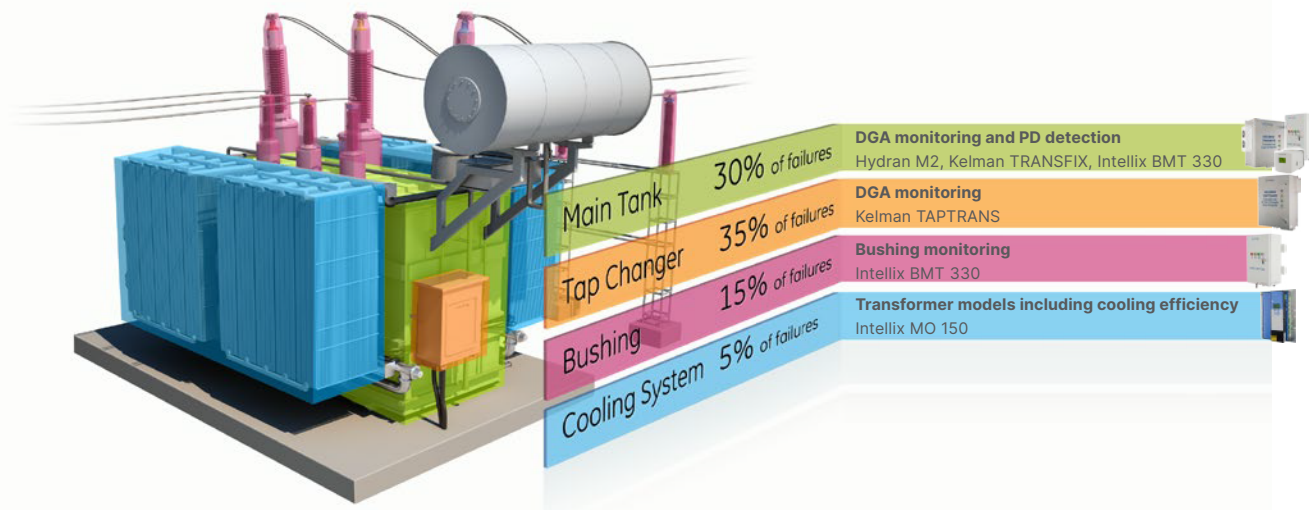


Measurements taken by units with modelling capabilities are converted into meaningful information and displayed in the models worksheets. This provides the user with information which ordinary cannot be directly measured through sensors.

Manual data can be entered enabling simulations on the dynamic loading & apparent power models.

Data Retrieval from Online Monitors

Perception Fleet has the ability to connect and download data from the entire range of GE Vernova's Monitoring and Diagnostic devices. The download schedule feature in Perception Fleet facilitates the automatic retrieval of data from GE Vernova online monitoring devices, ensuring data is up to date without the need for user interaction. Perception Fleet also allows users to rename stored measurement and data point information. This enables organizations to update and customise Perception Fleet to follow their own internal naming conventions for data and asset details.



Standards-Based Management

Perception Fleet incorporates several internationally recognized standards for dissolved gas analysis. These standards are widely considered as the best in class and are attired to by transformer technical experts throughout the world.

The algorithms used in Perception Fleet automatically apply data analysis technics derived from these standards against the dissolved gas data received by the GE Vernova online monitoring device. By combining these standards along with best practice techniques within the algorithms, the software is able to calculate the transformers risk index and score. The algorithm assigned to a transformer can also be weighted and its sensitive to the parameters adjusted – these adjustments have has a direct impact on the algorithm and affects the final risk index and risk score applied to each transformer.

Perception Fleet's standards-based algorithms include:

CIGRÉ TB 227: CIGRÉ TB 227 provides five (5) transformer conditions in terms of its reliable operation. Using this information we are able to tailor the standards used within the Perception Fleet algorithms to determine 5 transformer risk index conditions.



IEEE C57.104: Describes four (4) condition levels for absolute dissolved gas concentration. To increase accuracy and provide a broader scope, GE Vernova rebuilt the condition limits and set five (5) condition levels using information from CIGRÉ TB 227. By individually assigning each gas, its condition level limits and triggers, we factor in the potential risk associated with the concentrations of certain gases over others.

IEC 60599 (1999): Provides the dissolved gas rate of change expectance for normally operating transformers.



IEC 60422 (2013): Used to analyze moisture in oil providing three (3) levels of H₂O concentration. To increase accuracy and provide a broader scope, GE Vernova rebuilt the condition limits and set four (4) condition levels based on information from CIGRÉ TB 227.

EPRI Ratios: Provides details on gas concentration ratio characteristics, used to analyse OLTC insulation oil.

ASTM D3487: Specifies properties for new mineral insulating oil of petroleum origin for use as an insulating and cooling medium in new and existing power and distribution electrical apparatus.

ASTM D4768 & ASTM D2668: Covers the determination of 2,6-ditertiarybutyl para-cresol and 2,6-ditertiary-butyl phenol in new and used insulating liquids at concentrations up to 0.5 %.

EN 14210: Specifies test methods for the determination of interfacial tension in the range from 4 mN/m to 50 mN/m between two immiscible liquids which can also be free from surface active agents. It is particularly suitable for determining the interfacial tension between water or aqueous solutions and organic liquids which are immiscible with water.

IEC 60156 & ASTM D1816: Specifies the method for determining the dielectric breakdown voltage of insulating liquids at power frequency.

IEC 60814 & ASTM D1533: Describes methods for the determination of water in insulating liquids and in oil-impregnated cellulosic insulation with coulometrically generated Karl Fischer reagent.

IEC 62021-(1 & 2) & ASTM D974 & D664: Describes the procedure for the determination of the acidity of unused and used electrical mineral insulating oils.

IEC 60247 & ASTM D924: Describes methods for the determination of the dielectric dissipation factor ($\tan \delta$), relative permittivity and d.c. resistivity of any insulating liquid material at the test temperature.

IEC 60666: Described concern the detection and determination of specified additives in unused and used mineral insulating oils.

IEC 61198 & ASTM D5837: Specifies test methods for the analysis of 2-furfural and related furan compounds resulting from the degradation of cellulosic insulation and found in mineral insulating oil samples taken from electrical equipment.

IEC 62535, DIN 51353 & D1275 Method A & B: Specifies a test method for detection of potentially corrosive sulphur in (both inorganic and organic) used and unused mineral insulating oil.

IEC61619 & ASTM D4059: Specifies a method for the determination of polychlorinated biphenyl (PCB) concentration in non-halogenated insulating liquids by high-resolution capillary column gas chromatography using an electron capture detector (ECD)

ASTM D971 & ASTM D2285: This test method covers the measurement of the interfacial tension between mineral oil and water, under non-equilibrium conditions.

ASTM D1500 & ISO 2049: Specifies a method for the visual determination of the color of a variety of petroleum products.

Piecewise Linear Rate of Change

Dissolved gas rate of change is another key aspect of the algorithms used in the Perception Fleet ranking. In order to increase the accuracy of the rate of change calculations, GE Vernova adopted a piecewise linear approach for the rate of change calculation.

This methodology for determining dissolved gas rate of change allows for a 24/7/365 gas rate of change analysis above and beyond the conventional single set period-of-time analysis used in online monitoring equipment. This method of calculating dissolved gas rate of change is considered to be more comprehensive as it can be used to distinguish fault conditions.

Piecewise linear rate of change works by using three (3) separate spans of time, providing the following:

- **Long rate of change** – Observation of defects developing and accumulating through transformer life (e.g. overheating defects, ageing, some types of discharge activity and general condition deterioration).

- **Mid rate of change** – Observation of seasonal dependent trends, related to changes in electrical systems (load etc.) or ambient condition.
- **Short rate of change** – Observation of defects which have spurious rise and need to be tracked from a short term perspective (e.g. discharge of high energy, high temperature overheating which will require urgent action and investigation).

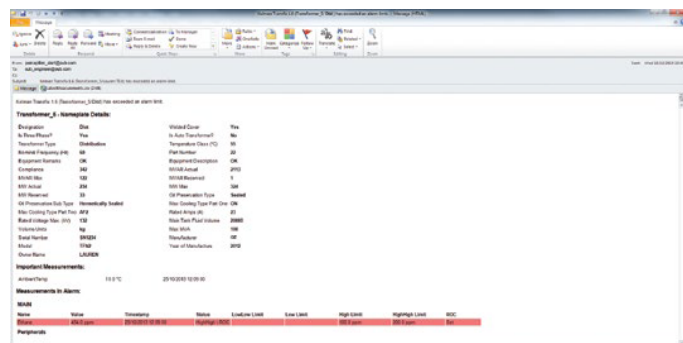
A rate of change value is then calculated for each individual time span. The algorithm in Perception Fleet combines these three individual values and determines the criticality of a gas rate of change pattern.

Additional Features

Perception Fleet's additional features provide visualization of the data captured from the monitoring units in a number of ways depending on the users' requirements. The intuitive data display options offer a variety of data views enabling users to view raw or interpreted data as needed.

The naming convention for the data captured in Perception Fleet can also be fully customized to suit your organizations own requirements.

Expert Analysis and Alarm Notification Emails



Ensuring prompt action is taken when a fault is reported can prevent further damage and potential catastrophic failures of transformers. The Expert Analysis Notification email feature in Perception Fleet facilitates such intervention. By providing a detailed snapshot of the transformers condition when a fault is reported, both the technical advisor and operator are alerted to the alarm at the same time and can remotely analyze the transformer data. The snapshot contains the critical information required for the advisor to diagnose the fault, react and intervene if necessary.

Standard notification emails can also be configured on a per device basis. Designated recipients will receive emails should a monitoring device trigger a concentration alarm, rate-of-change alarm, require a service, or if Perception Fleet is unable to communicate with the monitoring device.

Transformer Reports

Perception Desktop - Transformer Status Report

(07/05/2012 To 02/07/2012)

Company : GE Energy

Substation : California

Transformer : T1

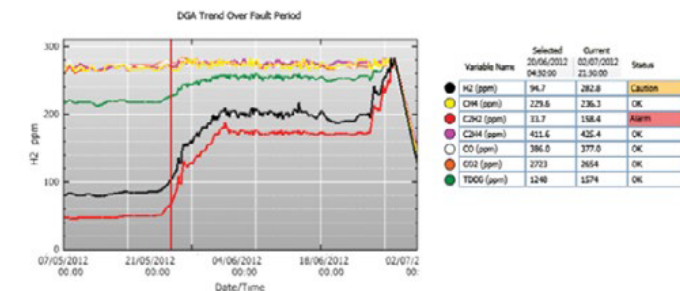
Monitor : GT7 MT1-A111111

Status : Monitor in alarm

Date : 07/08/2012

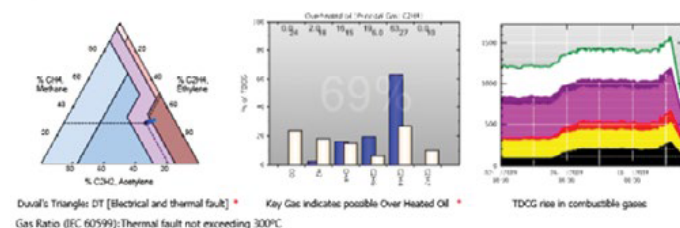
Overview

Unit GT7 was commissioned in 1985 and has been running a consistent load with regular outages for service - last outage was Jan'11. GE Online DGA Monitoring Equipment was installed in March'11 and the gas levels have stayed constant however in May'12 gas levels spiked within the transformer - this was picked up by the Online Monitor.



Gas values stayed constant until May when the Perception Software notified the maintenance team with a rapid increase in H2, C2H2 and other gases. As the gases continued to rise - the Transformer was de-energised.

Diagnostics (OilSourceA)



Conclusion

Using the diagnostics we were able to identify possible causes confirming our initial suspicions. We will now swap the transformer out and perform a full condition assessment. In the meantime - OTS will be used to maintain current output levels.

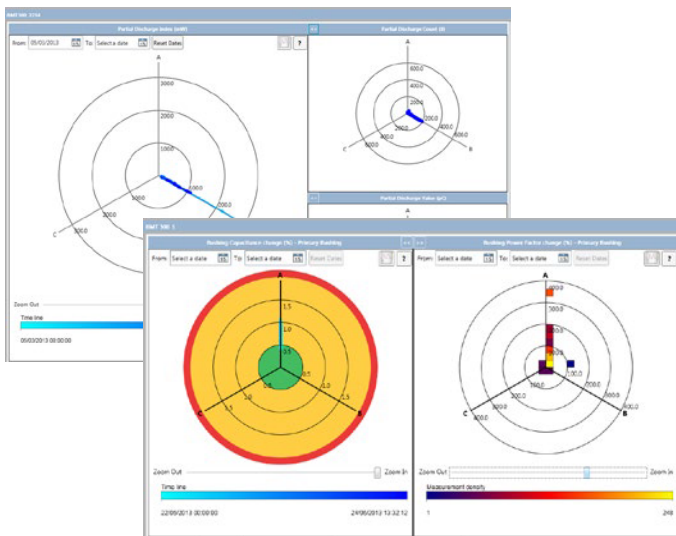
Perception Fleet enables users to automatically generate a customized transformer overview report. Upon selection, the report creation wizard will guide the user through the report generation process and automatically populate information regarding the transformer status, measurements and diagnostics. Space for editable text enables the user to comment on the assets, graphs and diagnostics. The report can be further customized by adding a company logo for presentation.

Visual Fleet Overview



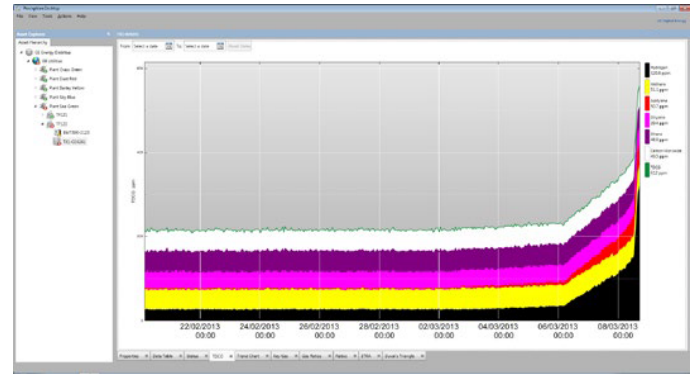
An asset network is built by adding monitoring units using Perception Fleet's intuitive graphical user interface. The wallboard screen displays the units in a geographical virtual fleet overview, automatically refreshing the status as measurements are collected. The network health can be quickly analyzed to identify problematic units or sites. Wallboard screens can be configured for sites and assets. Perception Fleet's asset explorer section can then be used to investigate the unit/site where the alert was raised. The user can select an asset, view the status of the unit, including the current gas levels, and check alarm limits set.

Transformer Bushing Data



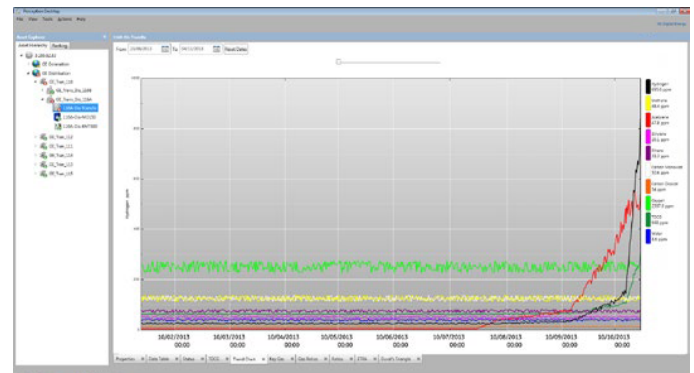
Transformer bushing data derived from the Intellix BMT 330 is displayed using a 3 point vector delta polar plot chart. The Intellix BMT 330 captures bushing Power Factor & Capacitance Change as well as Partial Discharge data namely PD count, PD Average Apparent Charge value, PD index and PRPD data patterns. The charts can be viewed as polar plot depicting the exact measurement point locations relative to the polar plot or as a histogram displaying the measurement point grouping and density relative to the polar plot. There is also an Inter-Phase Angle polar plot which displays the measured angles in a more intuitive way than could otherwise be achieved with a trend chart.

Total Dissolved Combustible Gases (TDCG)



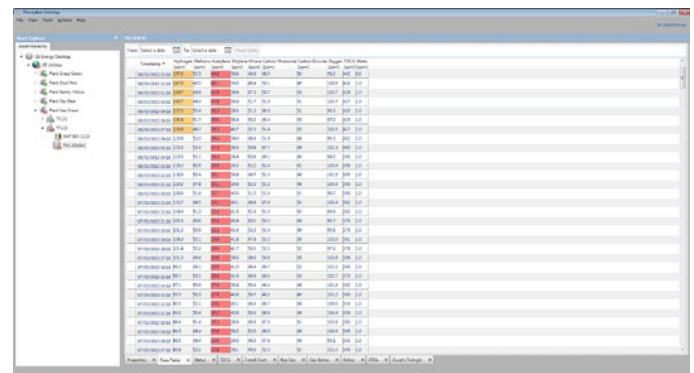
Displays the total dissolved combustible gas as relative concentrations within a trend chart. This view allows the user to quickly gauge the relative ratio concentrations of the individual gases.

Trend Chart



Numerous customizable features give the user control over how the chart and data are displayed. The charts can be filtered or zoomed, measurements can be added or removed, line colors can be changed, data smoothing and many more options are available.

Data Table



Displays all the raw data gathered on the transformer. Users can add and remove measurement points from the data table as well as export the data to a CSV file. Measurements that breach alarm limits are highlighted in amber or red.

Ordering

The flexible and scalable nature of Perception Fleet necessitates a dynamic pricing scale based on the number of online monitors feeding Perception Fleet data.

Technical Specifications

FEATURE\PRODUCT	DESKTOP	FLEET
Users	Single	Multiple
Install/Database	Local	Server
Number of units in database	Unlimited	Unlimited
Additional Languages	•	•
Trending	•	•
CSV Import/Export	•	•
Alarm Visualisation	•	•
Advanced Diagnostics	•	•
Transformer Overview Report	•	•
Trend Chart Annotations	•	•
Gas Ratio Alarms and Trending	•	•
Automatic Transformer Risk Evaluation		•
Transformer Fleet Ranking		•
Transformer & Fleet Dashboards		•
Web browser interface		•
Customized Import/Export		•
Expert Analysis EMail		•
Wallboard Screen		•
Email Alarm Notification		•
User access control		•
Automatic Data Download		•
OPC UA Server		•
TOA4 Export		•
Support Contract		•

RECOMMENDED SYSTEM REQUIREMENTS

PERCEPTION DESKTOP

- 2 GHz 32-bit (x86) or 64-bit (x64) processor
- 2 GB RAM
- At least 100 GB of available hard disk space
- Microsoft® .NET Framework 3.5 SP1, 4.0 & 4.5
- Windows 7

PERCEPTION SERVER

- 3 GHz 32-bit (x86) or 64-bit (x64) Processor
- 4 GB RAM
- At least 500 GB of available hard disk space
- Microsoft .NET Framework 3.5 SP1, 4.0 & 4.5
- Windows Server 2003 or 2008
- Microsoft SQL Server

For more information, visit
governova.com/grid-solutions

IEC is a registered trademark of Commission Electrotechnique Internationale.
IEEE is a registered trademark of the Institute of Electrical and Electronics Engineers.
CIGRÉ is a registered trademark of the International Council on Large Electric Systems.
Microsoft is a registered trademark of Microsoft Corporation in the United States and other countries.

Perception is trademark of the General Electric Company.

GE Vernova reserves the right to make changes to specifications of products described at any time without notice and without obligation to notify any person of such changes.

© 2025 GE Vernova and/or its affiliates. All rights reserved. GE and the GE Monogram are trademarks of General Electric Company used under trademark license.



GE VERNOVA

GEA-12772F(E)
English
251010