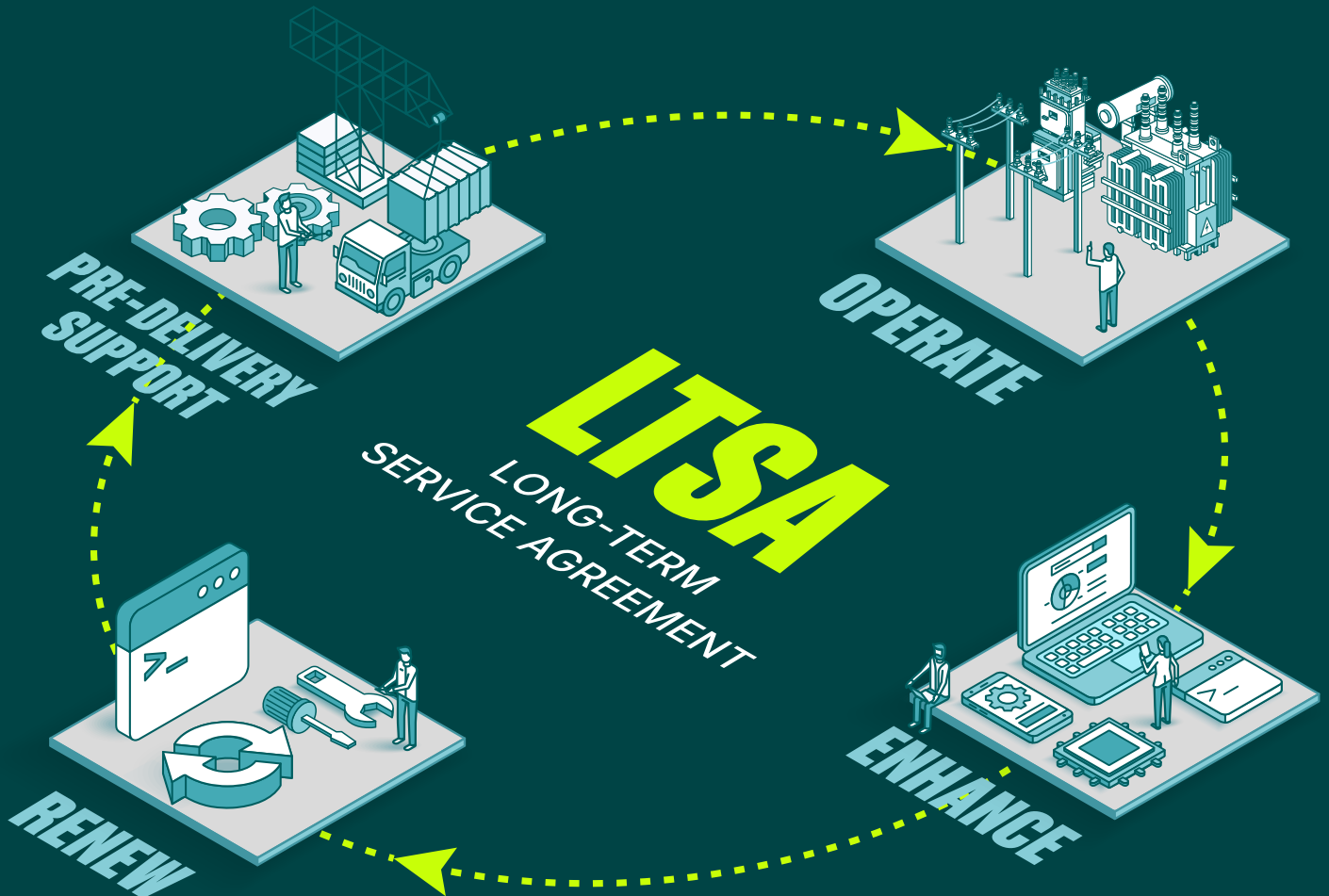




# AC SUBSTATION SERVICES

## Supporting Reliability & Performance Across the Full Asset Lifecycle

Delivering dependable power requires a long-term approach to substation care. AC Substation Services provide comprehensive lifecycle support to help you build, operate, maintain, and modernize your AC substation assets. Backed by deep technical expertise and responsive field services, we deliver solutions that improve performance, strengthen resilience, and safeguard your operations - today and for the future.



# Learn how our tailored solutions can enhance your assets and drive your business forward.

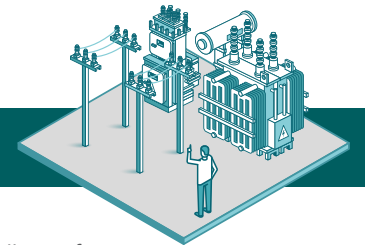


## PRE-DELIVERY SUPPORT

GE Vernova's AC Substation Services ensure early-delivered equipment is properly inspected, preserving the ability for warranty and insurance claims. We provide OEM-compliant short- and long-term storage management to protect asset integrity, giving customers peace of mind and the guarantee of equipment readiness when installation begins.

- **Inspection Upon Receipt of Equipment**
- **Storage Facility for Equipment**
- **Storage Management**
  - Short- and long-term preservations based on OEM guidelines

## OPERATE



GE Vernova's AC Substation Services deliver end-to-end substation execution and operational excellence from erection, commissioning, audits, and NETA-based maintenance to training, condition assessment, and repairs. We enable hyperscalers and BTM customers to confidently operate, maintain, and protect their assets with expert support, emergency response, and NERC-compliant cybersecurity oversight.

- **Erection & Commissioning (E&C) on Substation Equipment & Complete Substations**
- **Audits**
  - Third-party inspection for validation of performed work
- **Training on Substation Equipment**
- **Condition Assessment**  
(Inspection and testing/non-intrusive)
  - Can be performed yearly or every two, five, or seven years based on customer requirements
- **Repairs**
- **Operation & Maintenance**
  - Maintenance-based and compliant with NETA standards
  - Intrusive and non-intrusive
- **Crisis Support**
  - Remote & local support based on customer reliability requirements
- **NERC Compliance Inspection**
  - Cybersecurity resilience audits
  - Testing and validation of protection firmware
  - Upgrading of protection firmware
- **Engineering, System Studies, and Consultancy Services**
  - Substation design, network analysis and simulation for recurrent failures, incidents, performance issues, upgrades, uprates, root cause analysis, and FERC regulation orders

## ENHANCE



GE Vernova's AC Substation Services enhance substation performance through advanced digital monitoring, asset health analytics, and power immunity solutions that provide near real-time visibility into equipment condition, risk exposure, and lifecycle expectancy. We strengthen resilience with extended warranties, strategic spare parts programs, and proactive obsolescence management protecting uptime and improving long-term investment.

- **Digital Monitoring**

- CSD100 (point-on-wave)
- CBWatch3/BWatch/PDWatch
- GIS Camera
- CapMD™

- **Power Immunity**

- Continuously monitors power robustness at critical interfaces
- Scores the site quarterly with a Power Immunity Index (PII)
- Move from power reliability to power immunity

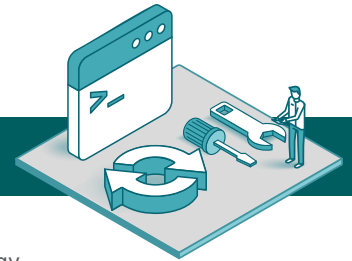
- **Extended Warranty**

- On newly installed GE Vernova equipment
- On new GE Vernova equipment in storage

- **Strategic Asset Availability Management**

- Secure availability of strategic spare parts or complete spare equipment
- Obsolescence management

## RENEW



GE Vernova delivers turnkey new projects, retrofit and upgrade solutions, replacing legacy technology with advanced systems while providing end-to-end technical support from RFP development through project completion. We enhance substation lifecycle performance through capacity uprates, efficiency improvements, regulatory alignment (including FERC 881), and modernization strategies that minimize site disruption and maximize grid reliability.

- **Retrofitting**

- Turnkey ownership to replace old technology with new equipment
- Technical support all along the process (from RFP drafting to completion)

- **Upgrade/Modernization Uprate**

- Upgrade rather than retrofit to minimize complex on-site installation, civil works, and structural modifications
- Increase equipment capacity and resolve environmental concerns through upgrades
- FERC 881 compliant to improve efficiency and reliability

For more information, visit  
[governova.com/grid-solutions](https://governova.com/grid-solutions)



©2026 GE Grid Solutions, LLC, a GE Vernova company, and/or affiliates. All rights reserved. GE is a trademark of General Electric Company and is used under trademark license.

GEA-33370-(E)  
English  
260406