

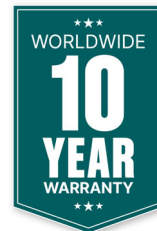
Multilin™ EPM 9900P

High Performance Power Quality Metering System



Quick Start Guide

Software Revision: 1.0x
Manual P/N: 1601- 0242-A2
Manual Order Code: GEK-130918A
Copyright © 2026 GE Vernova. All rights reserved.

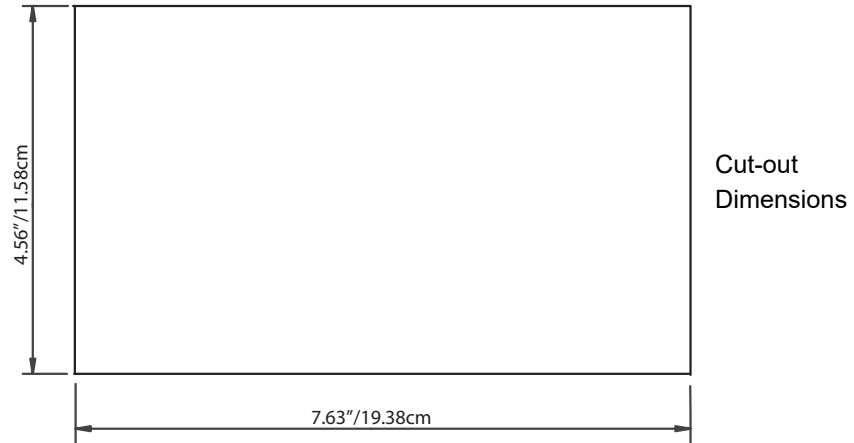


Mechanical Installation

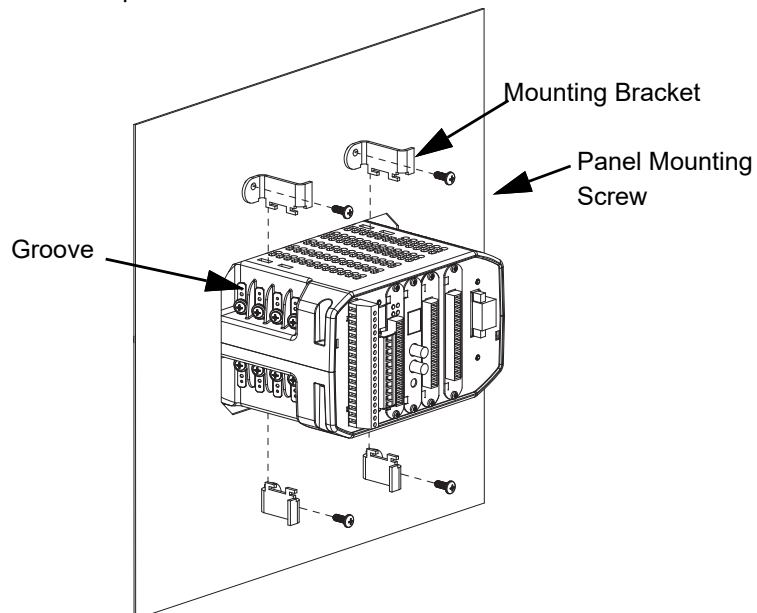
1. Slide the meter into the panel's cutout.



Note that you can also mount the meter vertically.

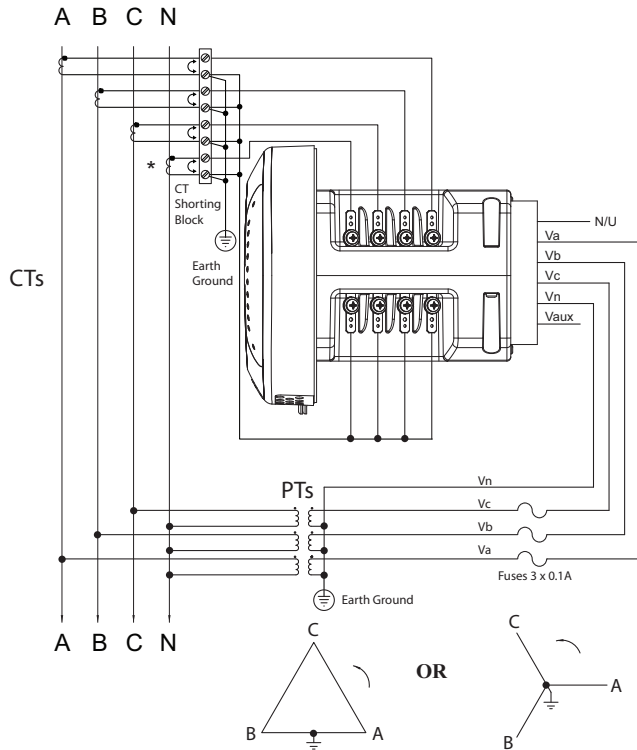
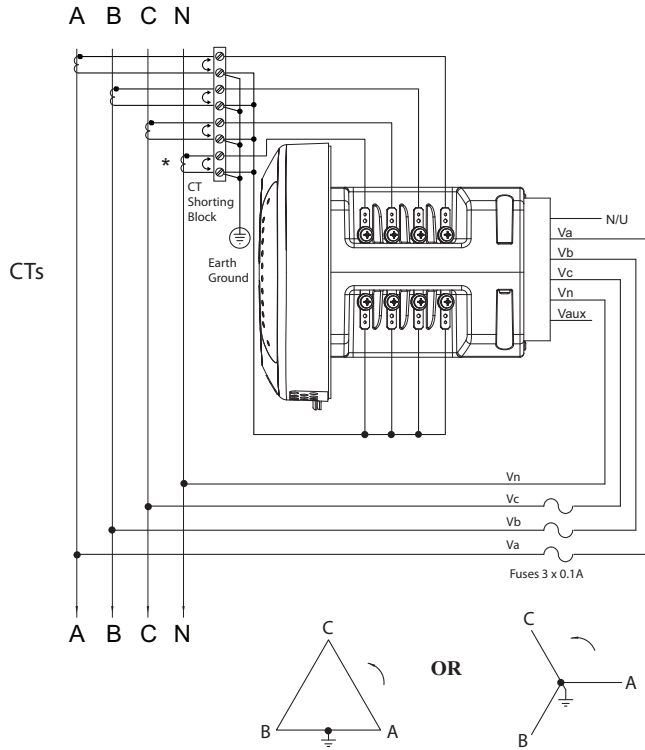


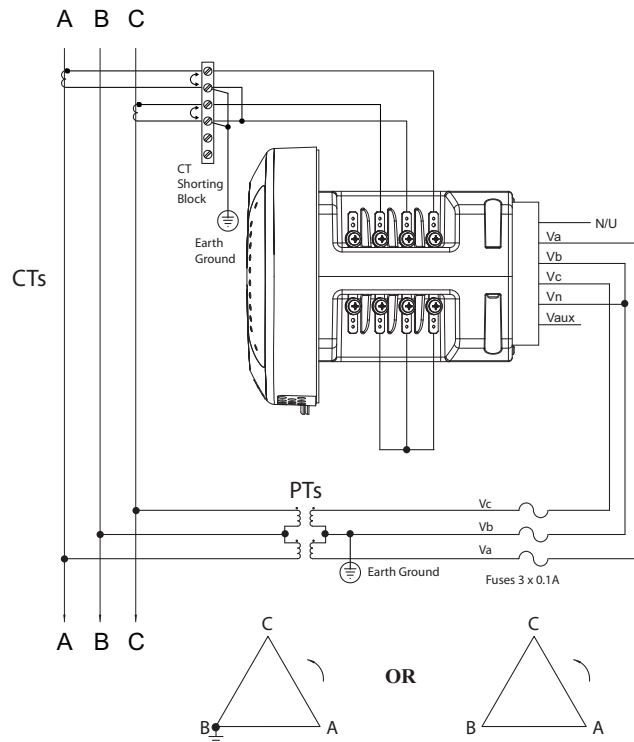
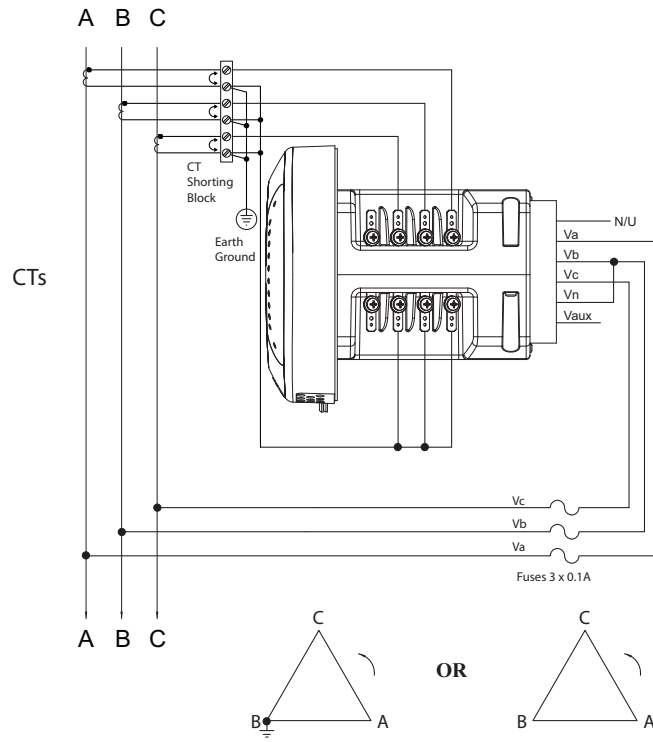
2. From the back of the panel, slide 4 mounting brackets into the grooves on the top and bottom of the meter housing (2 fit on the top and 2 fit on the bottom).
3. Snap the mounting brackets into place.
4. Secure the meter to the panel with lock washer and a #8 screw in each of the 4 mounting brackets.
5. Tighten the screws with a #2 Phillips screwdriver. Do not over-tighten. Maximum installation torque is 3.5 lb-in.



Electrical Installation

(see the EPM 9900P Instruction Manual for additional wiring configurations)





Programming the EPM 9900P Meter Using the USB Virtual Com Port

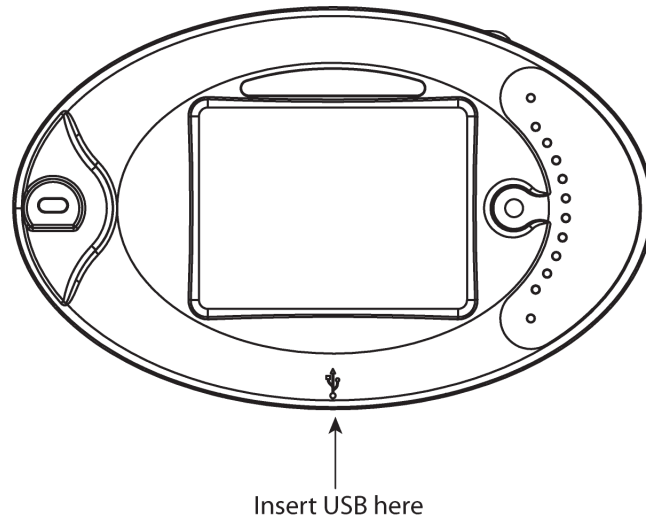


For Operating systems earlier than Windows® 7 OS, you must install the driver before using the USB Virtual Com Port for the first time.

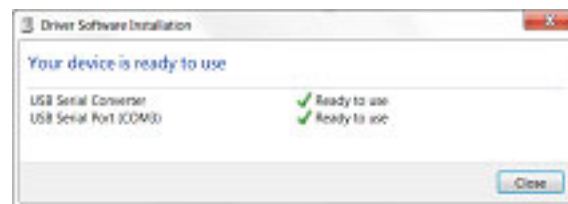
1. Download the GE Vernova Communicator software package. (Click **Resources - Software** on left side of EPM 9900P page <https://www.governova.com/grid-solutions/automation/protection-control-metering/epm-9900p>).
2. Start the GE Vernova Communicator installation and select the USB driver. The driver is installed on your PC (you will see screens and messages during the process).
3. Click **Start > Settings > Control Panel > System folder > Hardware tab > Device Manager button > Ports**. Next to USB Serial port will be the number of the Com port it uses, e.g., COM3. Note this number.

Connecting your PC to the Meter

1. Attach a USB cable from your PC's USB port to the meter's front panel USB port. See the figure below.

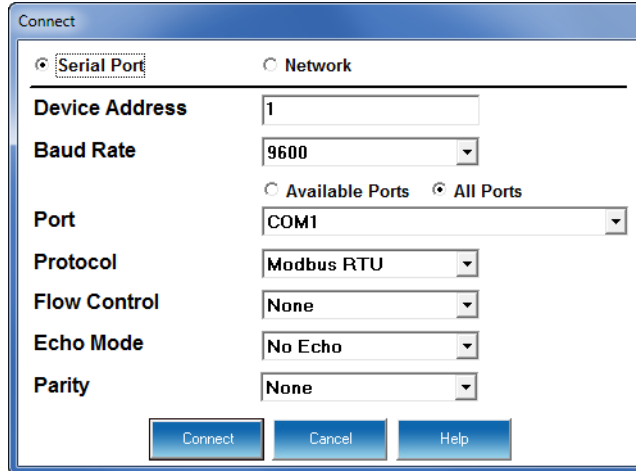


2. Windows® 7 and above operating systems install the USB driver and display the screen shown. Make note of the Com port.



Connecting to the Meter via Software

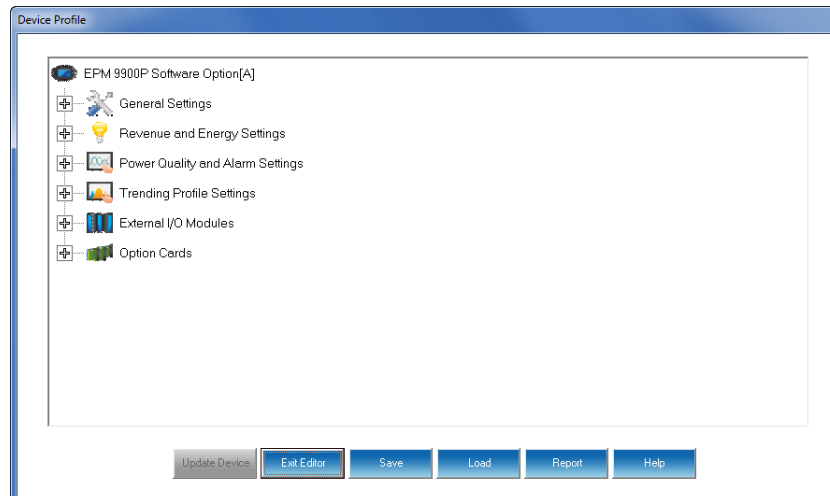
1. Download, install, and open GE Communicator software. (Click **Resources-Software** on left side of EPM 9900P page <https://www.governova.com/grid-solutions/automation/protection-control-metering/epm-9900p>).
2. Click the **Connect** icon on the Tool Bar. You will see the Connect screen.



3. Click **Serial Port**.
4. Select Baud rate of 115200.
5. Select the Port that is the USB Virtual Com port.
6. Click **Connect**. You will see the Device Status screen.
7. Click **OK**. You will see the Main GE Vernova Communicator software screen.

Configuring the Meter via Software

Click the **Profile** icon on the Tool Bar. You will see the Device Profile screen.



Instructions for a few basic settings are given in this Quick Start Guide. For more information, click **Help > Contents** from the Title Bar of the GE Vernova Communicator application's Main screen, to view the *GE Vernova Communicator Instruction Manual*.

CT, PT Ratios and System Hookup

From the Device Profile screen, double-click **General Settings > CT, PT Ratios and System Hookup**.

The current settings are shown on the screen.

1. Double-click one of the settings to open the CT and PT Ratios screen, shown below.

CT Ratio			PT Ratio (Line to Neutral)		
	Primary Current	Secondary Current		Primary Voltage	Secondary Voltage
I A, B, C	5.00	5.00	V A, B, C	120.00	120.00
I N	5.00	5.00	V AUX	120.00	120.00

Hookup
 Wye

Operational Frequency Range
 45Hz to 69Hz

OK Cancel Help

2. You can enter CT and PT Ratios and select Hookup from the pull-down menu. Click **Help** to view instructions for configuring these settings.
3. Click **OK** to close the screen. Click **Update Device** from the Device Profile screen to save your settings.

Example CT Settings:

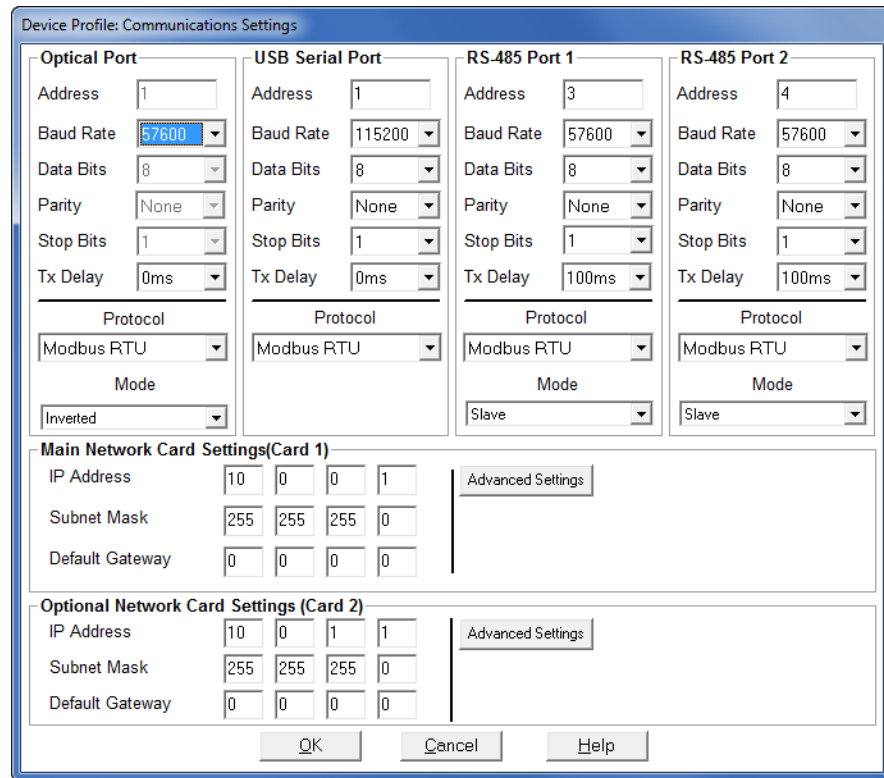
200/5 Amps: set the Primary Current value as 200.00; set the Secondary Current value as 5.00.

Example PT Settings:

14400/120 Volts: set the Primary Voltage value as 14400.00; set the Secondary Voltage as 120.00.

Communication Settings

1. From the Device Profile screen, click **General Settings > Communications**. The current settings for the meter's Ports are shown on the screen.
2. Double-click one of the Port settings to open the Communications screen, shown on the next page.



3. You can configure the settings for all four Communication Ports, as well as the two Network Cards. Click **Help** to view instructions for configuring these settings.
4. Click **OK** to close the screen. Click **Update Device** from the Device Profile screen to save your settings.



You can also use the standard or optional Ethernet ports, the optional RS485 ports, or the ANSI optical port to connect to and configure the EPM 9900P meter. See the meter manual (link below) and the software manual (click **Help > Contents** from the GE Vernova Communicator application Main screen).

For further assistance

For product support, contact the information and call center as follows:

GE Vernova	Worldwide telephone: +1 905 927 7070
650 Markland Street	Europe/Middle East/Africa telephone: +34 94 485 88 54
Markham, Ontario	North America toll-free: 1 800 547 8629
Canada L6C 0M1	Fax: +1 905 927 5098

Worldwide e-mail: multilin.tech@gevernova.com

Europe e-mail: multilin.tech.euro@gevernova.com

Website: <https://www.gevernova.com/grid-solutions/multilin>

Manuals and software: <https://www.gevernova.com/grid-solutions/automation/protection-control-metering>