



Visor Hardware

If you're looking for ways to reduce downtime and enhance the performance of operations and assets, GE Power Conversion's simple suite of clever software applications can help. Its flexibility includes 'on-prem' and cloud-based options which help to optimize operations and energy, and enable predictive maintenance and cyber-secure service solutions.

GE Power Conversion's digital suite is based on a straightforward, modular range of digital app's, tools and services, connecting data with the right people. Already, more than 500 sites are benefiting from Power Conversion's digital solutions. Each of our three easy-to-navigate modules focuses on a key area of improvement: Operations+, Maintenance+ and Services+

Installing the suite - Peace of mind with GE's Visor Platform

A powerful data platform that underpins GE's suite of solutions, bringing it all together seamlessly and securely. With a common architecture, scalable to multiple sites, these solutions benefit from the Visor platform. With more than 15 years of product experience Visor is one of the most proven and trusted devices of its kind. The Visor Service Portal and Visor Connect Box enable data storage and remote connectivity, and provide a unified cloud dashboard for displaying analytics and insights.

Cabinet vs. Standalone

Regardless of the variant of Visor you select, you can opt to have the system cabinet mounted or free standing, usually for integrating into other equipment. The cabinet based system features a 12.1 inch touchscreen interface allowing interaction with the Data Historian and other tools built into the system. There is also an easily accessible USB port on the front of the Visor cabinet that allows for easy archiving of data.

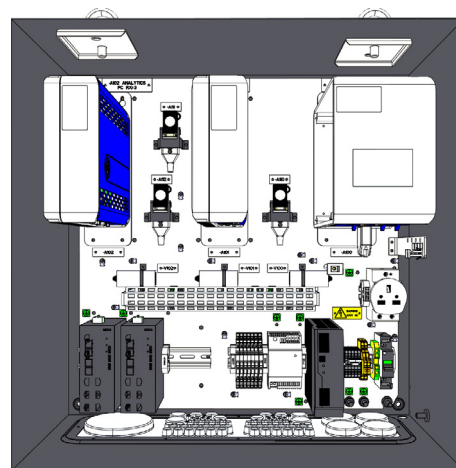
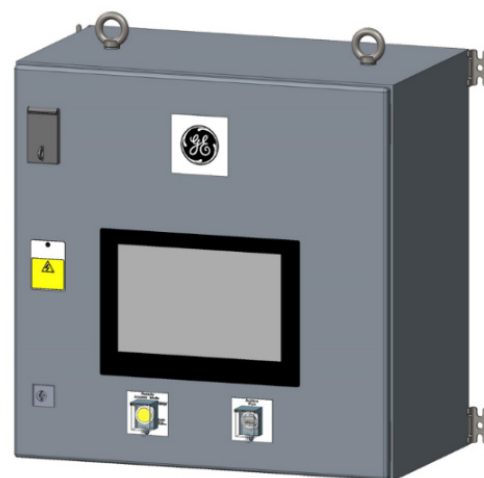
Internal Cabinet Options:

Visor Control PC

The Control PC from an architectural point of view is located on the control network, which manages traffic from GE Power Conversion's HPCI and automation devices. This machine can be used for several purposes including a general engineering PC, or for the Visor switchable read/write systems it is used as the engineering machine for remote users.

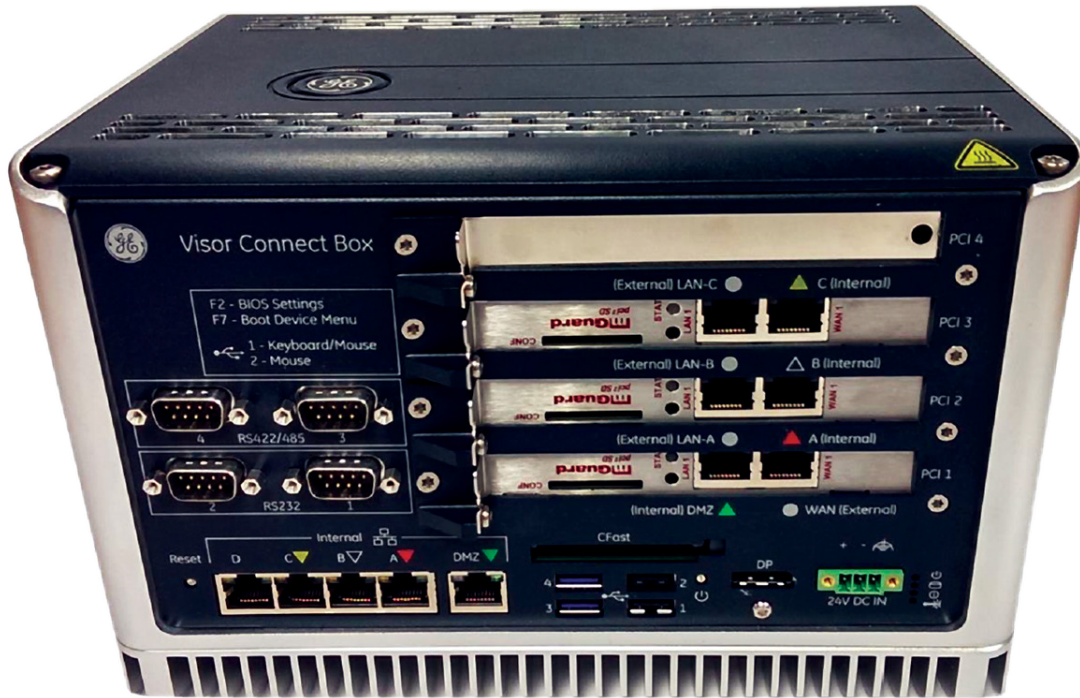
Visor De-Militarized Zone (DMZ) PC

The Visor DMZ PC from an architectural point of view is located within the Visor system's De-Militarized Zone, meaning the PC is in the controlled and protected safe zone. Typical deployment on this machine is on-prem analytical applications where cloud connection is not possible or permitted.



Network Switches

Depending on project requirements there may be a need for a certain type of network switch, therefore you can spec a managed switch and/or a fiber optic switch which can be built into the Visor cabinet.



RXi Specification

At the heart of the GE Visor system is the Visor Connect Box, an industrialized Emerson RXi-142 controller operating on a Windows 10 core system, running a Windows 10 virtual machine for remote user access, segregating the base system functions with remote user monitoring or Engineering capabilities.

The Visor Connect Box features mGuard PCI based firewalls that create a DMZ architecture physically segregating the IT infrastructure from the OT network.

	Visor Connect Box
Operating System	Windows 10 IOT
RAM	4GB
Storage	512GB
Processor	Intel i3
Display Out	Display Port
Virtualisation	Single Win 10 Virtual Machine

Comparison Table

	Visor 1	Visor 2.7	Visor 2.9
Automated Fault Notifications	Limited	Yes	Yes
Cloud/Analytics Enabled	No	Yes	Yes
VPN Type	OpenVPN	IPSec VPN	IPSec VPN
OPC-UA Server/Client Enabled	No	Yes	Yes
Product Variants	Read Only	Read Only/Permanent Write/ Switchable Read Write	Read Only/Permanent Write/Switchable Read Write
(Dedicated Software Server (P80-Pilot	Yes	Yes	Yes
Touchscreen User Interface	No	Yes	Yes
Operating System	Microsoft® Windows® XP	Microsoft Windows 7	Microsoft Windows 10
Software Upgrade Path	None	Microsoft Windows 10	-
Cyber Security	No longer supported	Includes latest Windows 7 patches	Includes latest security protection
Upgradability for Future Expansion	None	Flexible cabinet for future product expansion	Flexible cabinet for future product expansion
Third-Party Integration	Limited	Yes	Yes
Secure Controller Access	Yes	Yes	Yes
Additional options for integration with Customer IT Infrastructure	No	Yes	Yes
Low Bandwidth Optimization	Limited	Yes	Yes
Physical Footprint	Two piece physical hardware	Single enclosure	Single enclosure
Cyber Certification	None	Achilles Wurldtech L1	Achilles Wurldtech L1 & IEC62443 4-1
NTP Time Server Source	No	Yes	Yes
Enhanced Data Collection	No	Yes	Yes
External Network Diagnostics	Limited	Enhanced	Enhanced
Data Archiving	DVD	Lockable USB	Lockable USB
Cloud based Data Analysis & storage	No	Limited	Yes



Services

With a comprehensive global network of service engineers and technicians, GE is uniquely positioned to provide the knowledge, experience and skills to help you protect your assets, maintain critical processes, lower risk and increase productivity.

GE delivers original equipment spare parts around the world and repairs, refurbishes and upgrades customer systems with our latest technology. GE offers risk protection through contractual services based on system experience and sophisticated application calculations.

Conceived for Operators

GE Power Conversion's Digital Suite is built on GE's industry wide expertise in IT, OT (operating technology) and IIoT (the industrial internet of things). Above all we believe it should be intuitive, visual and customized for your operational needs. Featuring simple, clear interfaces it provides organizations of all sizes with access to GE's powerful data analytics, made accessible and usable by providing better intel and situational awareness. Genuine performance improvements are within reach, to help your organization work with increased efficiency and profitability.

To find out more:
contactus.powerconversion@ge.com

DIGITAL